



The Federal Republic
of Somalia
**National Bureau of
Statistics (NBS)**

Somalia Facts & Figures 2019

Fourth Edition

Compiled by: NBS | December 2020



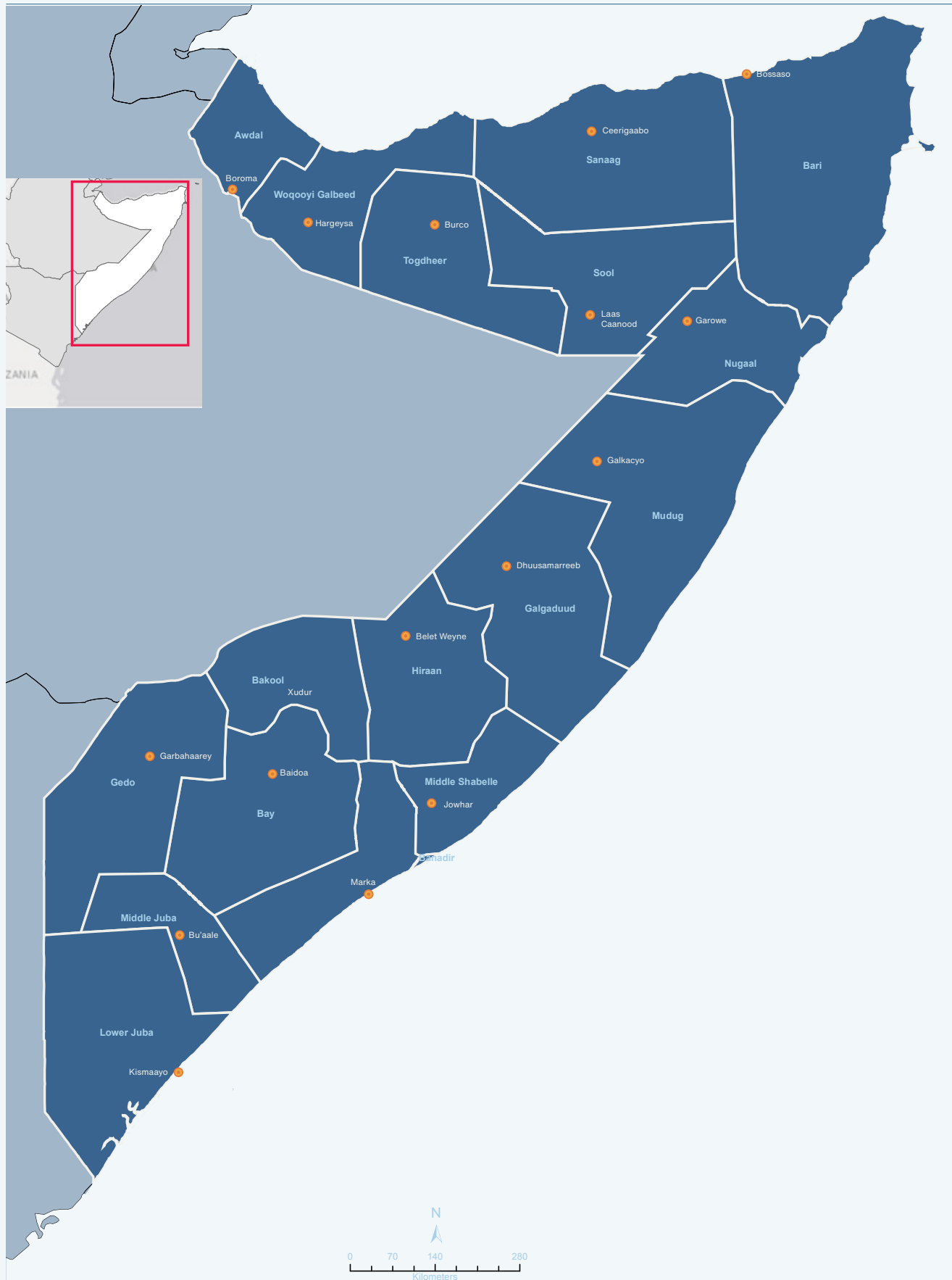


The Federal Republic of Somalia
National Bureau of Statistics (NBS)

Somalia Facts & Figures 2019

Fourth Edition

Compiled by: NBS | December 2020



General Information

Geographical Indicators

Latitude:

5.1521° N

Longitude:

46.1996° E

Total surface area:

637,657 sq.km2

Area under land:

627,337 km2

Area under water:

10,320 km2

Coastline:

3,333 km

Average Temperature:

28° C

Average Rainfall:

610 Millimeter

Economic indicators

GDP at current market prices (2019):

6,683 million US Dollars

GDP Per capita at current market prices (2019):

465 (USD Dollars)

Population

Somalia total estimated population 2014:

12,316,895

Urban population:

5,216,392

Rural population:

2,806,787

Nomadic population:

3,186,965

IDP population:

1,106,751

Foreword

Somalia Facts and Figures Booklet provides important socio-economic statistics as well as development indicators of the Federal Republic of Somalia for the year 2019. The booklet acts as a centralized reference point for all facts and figures for Somalia hence guides decision makers and stakeholders to Somalia's economy through reliable statistics compiled annually by the Somalia National Bureau of Statistics (SNBS) covering all sectors as well as reflecting on the various trends over the previous five years.

The booklet contains a wide range of fiscal, economic, social and environmental data from various statistical publications compiled by the SNBS, line ministries, Federal Member States and agencies. The booklet therefore serves as a brief and comprehensive reference for such crucial statistical information meant to inform prudent national planning and policy making efforts. Some figures in this edition may vary from those in the earlier editions reflecting new updates. Note that most of the 2019 and beyond data presented in this edition are provisional and could be revised in subsequent publications.

The transformation of the Directorate of National Statistics (DNS) from a Ministerial Department to an independent Executive Agency (SNBS) in 2020 aims at enhancing effectiveness and efficiency in the overall process of statistical production. We aim to ensure the booklet is of interest and use to everyone in Somalia. In recognizing the contribution from various sources of inputs used

in the compilation of this booklet, the National Bureau of Statistics expresses its gratitude to all institutions of the Federal Government and private sectors in availing the requisite data to produce this publication. The National Bureau of Statistics urges further co-operation among the government agencies in the compilation of the future editions of this booklet and other statistical publications by the National Statistics Office. Equal gratitude goes to the great SNBS team for their tireless dedication in compiling this crucial statistical information for the country.

The SNBS made great efforts to design and produce this booklet to meet the rapidly increasing requirements of policy makers, researchers and other data users in the public and private sectors.

The National Bureau of Statistics is committed to the production and dissemination of integrated statistical information that meets the international standards quality requirements. Comments and suggestions that may help to enrich the next edition of Somalia's Facts and Figures are welcome from users of this publication, or in case one thinks of other data that may be included in future editions, please get in touch using the contact details below. This document can also be obtained from the National Statistics website; www.nbs.gov.so

It is my sincere hope that the statistical information in this publication will be useful to the readers in making informed decisions. I am confident that the new strategic direction of SNBS, which focuses on expanding statistical coverage through coordination, will adequately address the knowledge and information needs of the country.

Sharmarke Mohamed Farah

Director General
Somalia National Bureau of Statistics
The Federal Government of Somalia



Abbreviations And Acronyms

BoP	Balance of Payments
CBS	Central Bank of Somalia
COICOP	Classification of Individual Consumption According to Purpose
NBS	National Bureau of Statistics
GDP	Gross Domestic Product
IDPs	Internally Displaced Persons
Kg	Kilogram
Kw/h	Kilowatts/Hour
Ltr	Litre
MCH	Maternal Child Health
Mm	Millimetre
MT	Metric Tons
No.	Number
SHDS	Somali Health and Demographic Survey
PESS	Population Estimation Survey for Somalia
SHFS	Somali High Frequency Survey
So.Sh.	Somalia Shilling
USD	United States Dollar

Contents

General Information	5
Foreword	6
Abbreviations And Acronyms	8
Contents	9
Tables	10
Figures	11

Chapter 1: Demographic and Social Statistics 12

Demographics	14
Education	19
Schools	20
Teachers	21
Students	22
Health	24
Child Health	25
Child Nutrition	26
Maternal Health	27
Chronic Diseases and Disabilities	28
Tobacco Use and Khat Chewing	29
Road Traffic accidents	31
Migration	33

Chapter 2: Economic Statistics 36

Production	38
Local Fishery Production	39
Price Statistics ²	40
Financial Statistics	41
Currency Exchange Rate	42
Remittance	42
Fiscal data (Revenue and Expenditure in USD)	43
Trade statistics	44
Balance of Payment	46
Gross Domestic Product (GDP)	47

Tables

Table 1.1	Household composition	15
Table 1.2	Household characteristics and social amenities	15
Table 1.2	(Cont'd) Household characteristics and social amenities	16
Table 1.3	Household possessions Percentage of households possessing various household effects, according to residence	17
Table 1.4	Current Fertility	17
Table 1.5	School by Authority for the year 2018/19	20
Table 1.6	Formal Education Teachers (Primary and Secondary for the year 2018/19	21
Table 1.7	Primary and Secondary Enrolment by Authority (2018/2019)	22
Table 1.8	School attendance ratio for primary	23
Table 1.9	School Attendance Ratio for Secondary	23
Table 1.10	Prevalence of chronic diseases by background characteristics	27
Table 1.11	Prevalence of disability and Common types of disability	28
Table 1.12	Smoking or using tobacco	28
Table 1.13	Usage of Khat	29
Table 1.14	Road traffic accidents by magnitude in Mogadishu, 2013-2019	31
Table 1.15	Road traffic accidents by magnitude and type of car in Mogadishu 2013-2019	32
Table 1.16	International Passengers movements, 2019	33
Table 1.17	Number of monthly arrivals and departures by Citizens and foreign 2019	33
Table 1.18	International passenger by country of origin	34
Table 2.1	Monthly fish meat production (in ton) in Mogadishu, 2012 – 2019	39
Table 2.2	Annual Fish Meat Production of Mogadishu in (Ton) by type of 2019	39
Table 2.3	Monthly Consumer Price Indices from 2016-2019	40
Table 2.4	Monthly and annual percentage of CPI, 2016-2019	40
Table 2.5	Exchange rate 2009-2019	42
Table 2.6	Remittance inward and outward from 2017-2019	42
Table 2.7	Central government Revenue and expenditure	43
Table 2.8	Total import of 2019	44
Table 2.9	Total Export of 2019 (USD)	45
Table 2.10	Balance of Payment 2018-2019 (Million US. Dollar)	46
Table 2.11	GDP by expenditure, current prices, million US Dollars, 2012-2019	47
Table 2.12	GDP by expenditure, current prices, and percentage shares	47
Table 2.13	GDP by expenditure, constant prices, million US Dollars	48
Table 2.14	GDP by expenditure, constant prices, percent annual change	48

Figures

Figure 1.1	Age-Specific Fertility Rates by Residence	18
Figure 1.2	Number of schools by year (2017-2019)	20
Figure 1.3	School size ¹ average for the year 2017-2019	20
Figure 1.4	Secondary teachers by Authority (2018/19)	21
Figure 1.5	Percent of Secondary teachers by Authority (2018/19)	21
Figure 1.6	Primary and Secondary enrolment by Authority (2018/19)	22
Figure 1.7	Vaccination Coverage for children age 12-23 months	25
Figure 1.8	Prevalence and treatment of childhood illness	25
Figure 1.9	Nutritional status of children	26
Figure 1.10	IYCF indicators on breastfeeding status	26
Figure 1.11	Percent distribution of mothers who had children in the five years before the survey, by source of antenatal care received during pregnancy	27
Figure 1.12	Place of delivery percent distribution of live births in the five years preceding the survey by place of delivery	27
Figure 1.13	Source of advice or treatment	29
Figure 1.14	Percentage of Household members who smoke cigarettes or use tobacco, and chew khat by age	30
Figure 1.15	Source of advice or treatment	31
Figure 1.16	Traffic accidents type of car in Mogadishu 2016-2019	32
Figure 2.1	Annual Fish Production in (in ton) by type in Mogadishu, 2012-2019	39
Figure 2.2	Exchange rate 2009-2019	43
Figure 2.3	Total import 2019	44
Figure 2.3	Export and import 2012-2017	45
Figure 2.5	Gross Domestic Product (GDP) annual growth rate, 2013-2019	49

CHAPTER 1

Demographic and Social Statistics





Demographics

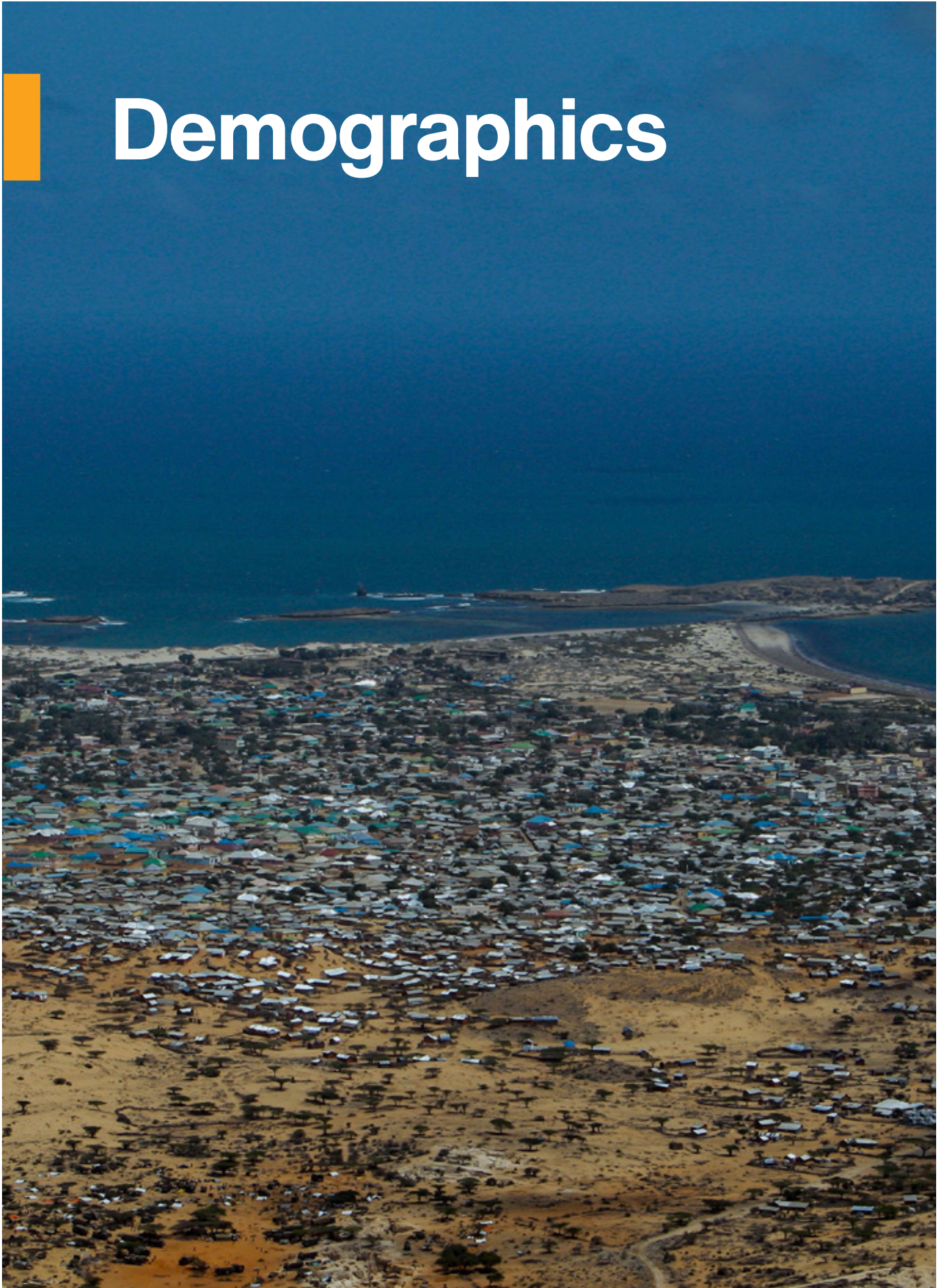


Table 1.1 Household composition

Percent distribution of households by sex of head of household and by household size; mean size of household, and percentage of households with orphans and foster children under 18 years of age, according to residence

Background characteristics	Type of Residence			Total
	Urban	Rural	Nomadic	
Household headship				
Male	67.2	67.3	72.0	67.9
Female	32.8	32.7	28.0	32.1
Total	100.0	100.0	100.0	100.0
Mean size of households	6.6	5.7	5.3	6.2
Percentage of households with orphans and foster children under 18				
Foster children ¹	16.5	13.7	12.9	15.3
Double orphans	4.2	2.5	3.7	3.7
Single orphans ²	16.0	10.0	10.7	13.7
Foster and/or orphan children	31.6	23.1	24.2	28.3
Number of households	9,470	4,363	2,007	15,841

Note: Table is based on de jure household members, i.e., usual residents

¹ Foster children are those under age 18 years of age living in households with neither their mother nor their father present

² Includes children with one dead parent and an unknown survival status of the other parent

Source: SHDS 2020

Table 1.2 Household characteristics and social amenities

Percent distribution of households by housing characteristics, percentage using solid fuel for cooking; and percent distribution by frequency of smoking in the home, according to residence

Housing characteristics	Households			Total
	Urban	Rural	Nomadic	
Electricity				
Yes	66.2	17.2	0.1	44.3
No	33.8	82.8	99.9	55.7
Total	100.0	100.0	100.0	100.0
Flooring material				
Earth/Sand	49.1	65.5	90.6	58.9
Dung	1.6	1.2	0.8	1.4
Grass	1.1	3.6	5.4	2.3
Wooden Planks	1.9	2.1	0.2	1.8
Palm/Bamboo	1.7	1.2	2.0	1.6
Parquet/Polished wood	0.5	0.6	0.0	0.5
Vinyl/Asphalt Strips	0.2	0.3	0.0	0.2
Ceramic Tiles	9.2	1.4	0.0	5.9
Cement	32.9	23.7	0.2	26.2
Carpet	0.9	0.4	0.4	0.7

Table 1.2 (Cont'd) Household characteristics and social amenities

Percent distribution of households by housing characteristics, percentage using solid fuel for cooking; and percent distribution by frequency of smoking in the home, according to residence

Housing characteristics	Households			Total
	Urban	Rural	Nomadic	
Others	0.9	0.1	0.3	0.6
Total	100.0	100.0	100.0	100.0
Rooms used for sleeping				
One	30.8	53.8	92.8	45.0
Two	33.8	34.4	7.0	30.6
Three or more	35.4	11.8	0.3	24.4
Total	100.0	100.0	100.0	100.0
Place for cooking				
In the house	61.8	37.5	12.5	48.9
In a separate building	24.2	35.2	11.5	25.6
Outdoors	13.3	26.5	74.1	24.6
Others	0.7	0.8	1.8	0.9
Total	100.0	100.0	100.0	100.0
Cooking fuel				
Electricity	3.4	0.2	0.0	2.1
LPG/natural gas/ biogas	3.8	1.0	0.1	2.6
Kerosene	2.5	1.2	0.4	1.9
Firewood	25.0	64.8	93.0	44.5
Charcoal	62.3	24.5	2.4	44.3
Straw/shrubs/grass	0.4	3.1	1.3	1.2
Agricultural crop	1.9	4.4	2.4	2.7
Animal dung	0.0	0.0	0.0	0.0
No food cooked in the household	0.5	0.5	0.4	0.5
Other	0.2	0.2	0.0	0.2
Total	100.0	100.0	100.0	100.0
Percentage using solid fuel for cooking ¹	89.6	96.8	99.1	92.8
Percentage using clean fuel for cooking ²	7.2	1.3	0.1	4.7
Total	9,469	4,363	2,007	15,839

LPG = Liquid petroleum gas

¹ Includes coal/lignite, charcoal, wood, straw/shrubs/grass, agricultural crops, and animal dung

² Includes electricity and LPG/natural gas/biogas

Table 1.3 Household possessions Percentage of households possessing various household effects, according to residence

Possession	Types of residence			Total
	Urban	Rural	Nomadic	
Household effects				
Radio	23.1	15.5	8.4	19.1
Television	32.1	4.6	0.5	20.5
Refrigerator	11.4	1.5	0.1	7.3
Mobile phone	81.0	67.0	59.3	74.4
Non-mobile telephone	7.1	2.0	3.4	5.3
Computer	11.0	1.2	0.2	6.9
Internet	18.6	2.3	1.2	11.9
Air conditioner/Fan	15.9	1.7	1.3	10.1
Number of households	9,469	4,363	2,007	15,839

Source: SHDS 2020

Table 1.4 Current Fertility

Age-specific and total fertility rate, the general fertility rate, and the crude birth rate for the three years preceding the survey, by Residence SHDS

Age group	Residence			Total
	Urban	Rural	Nomadic	
15-19	94	112	157	118
20-24	304	342	350	329
25-29	312	343	320	324
30-34	290	299	284	291
35-39	174	189	178	180
40-44	79	104	128	102
45-49	20	36	41	33
TFR (15-49)	6.4	7.1	7.3	6.9
GFR	211	235	244	228
CBR	38.5	43.9	46.3	42.2

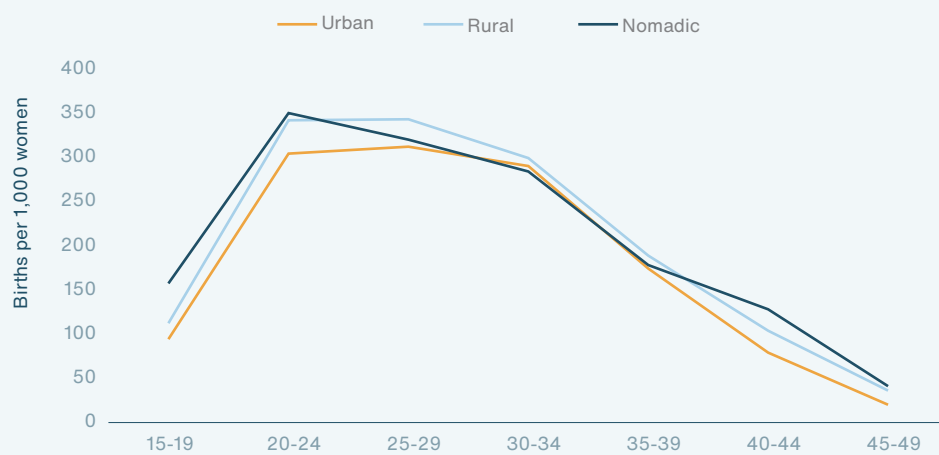
Notes: Age-specific fertility rates are per 1,000 women.

Rates for age group 45-49 may be slightly biased due to truncation. Rates are for the period 1-36 months prior to interview.

TFR: Total fertility rate expressed per women GFR: General fertility rate expressed per 1,000 women age 15-49 CBR: Crude birth rate expressed per 1,000 population

Source: SHDS 2020

Figure 1.1
Age-Specific Fertility Rates by Residence



| Age-specific fertility rates by residence

Source: SHDS 2020

Education



Schools

Table 1.5 School by Authority for the year 2018/19

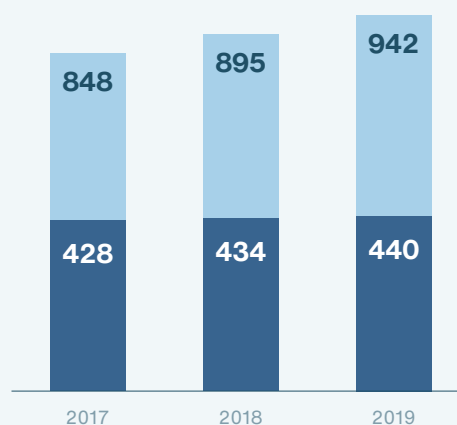
Regions	Non-Government			Government			Grand Total
	Primary	Secondary	Total	Primary	Secondary	Total	
Bay	29	17	46	34	5	39	85
Bakool	7	0	7	3	0	3	10
Banadir	374	295	669	20	15	35	704
Galgaduud	64	20	84	11	3	14	98
Gedo	47	1	48	84	5	89	137
Hiiran	53	14	67	11	1	12	79
L.Juba	22	7	29	52	14	66	95
L.shabelle	29	20	49	3	0	3	52
M. Shabelle	30	9	39	9	0	9	48
Mudug	46	10	56	14	4	18	74
Total	701	393	1,094	241	47	288	1,382

Source: Ministry of Education, Culture and Higher Education of Somalia, 2019

Figure 1.2

Number of schools by year (2017-2019)

Primary
Secondary

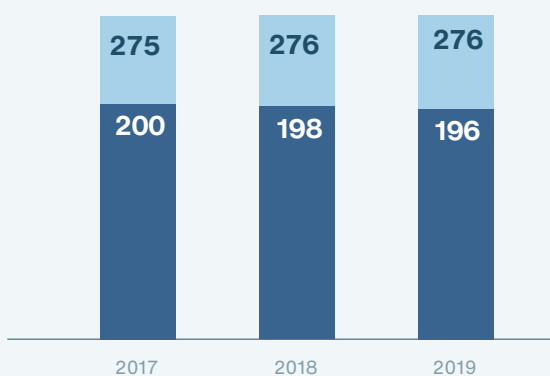


Number of Schools by Year

Figure 1.3

School size¹ average for the year 2017-2019

Primary
Secondary



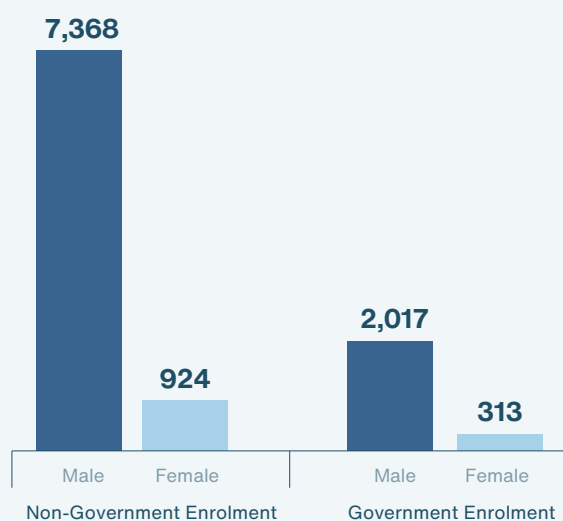
School size average summary

¹Average school size measures the average numbers of students enrolled in a school in a specific school year.

Source: Ministry of Education, Culture and Higher Education of Somalia, 2019

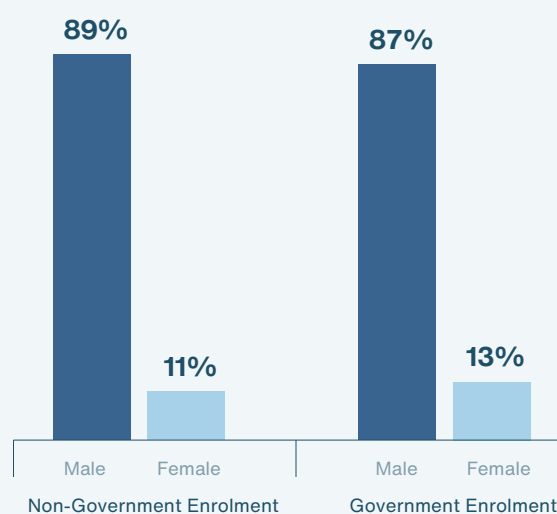
Teachers

Figure 1.4
Secondary teachers by Authority (2018/19)



Number of Secondary School teachers by Authority 2018/19

Figure 1.5
Percent of Secondary teachers by Authority (2018/19)



Percentage of Secondary school teachers by Authority 2018/19

Source: Ministry of Education, Culture and Higher Education of Somalia, 2019

Table 1.6 Formal Education Teachers (Primary and Secondary for the year 2018/19)

Formal Education teachers (Primary and Secondary for the year 2018/19)

Regions	Primary			Secondary			Grand Total
	Male	Female	Total	Male	Female	Total	
Bay	418	79	49	148	7	155	652
Bakool	41	2	43	-	-	-	43
Banadir	3,033	624	3,657	2,209	113	2,322	5,979
Galgaduud	444	41	485	111	4	115	600
Gedo	628	95	723	35	-	35	758
Hiiran	336	56	392	102	2	104	496
L.Juba	815	89	904	255	4	259	1,163
L.shabelle	165	29	194	107	5	112	306
M. Shabelle	201	36	237	57	2	59	296
Mudug	215	47	262	65	2	67	329
Total	6,296	1,098	7,394	3,089	139	3,228	10,622

Source: Ministry of Education, Culture and Higher Education of Somalia, 2019

Students

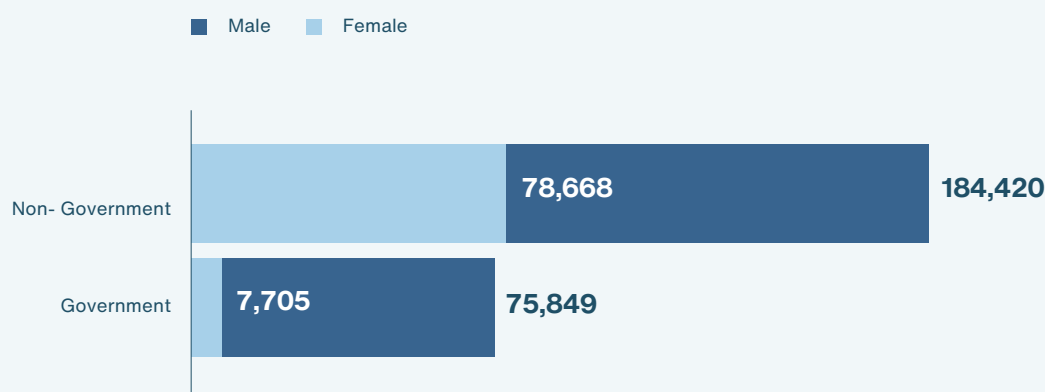
Table 1.7 Primary and Secondary Enrolment by Authority (2018/2019)

Enrolment by Authority							
Regions	Non-Government Enrolment			Government Enrolment			Enrollment Grand total
	Primary	Secondary	Total	Primary	Secondary	Total	
Bay	10,242	4,198	14,440	12,564	608	13,172	27,612
Bakool	992	-	992	716	-	716	1,708
Banadir	102,761	57,807	160,568	12,293	2,791	15,084	175,652
Galgaduud	14,382	3,922	18,304	2,917	353	3,270	21,574
Gedo	8,190	137	8,327	17,119	649	17,768	26,095
Hiiran	15,429	4,959	20,388	2,201	70	2,271	22,659
L.Juba	9,314	2,027	11,341	24,048	2,719	26,767	38,108
L.shabelle	6,495	2,319	8,814	387	-	387	9,201
M. Shabelle	8,701	1,678	10,379	1,353	6	1,359	11,738
Mudug	7,914	1,621	9,535	2,251	509	2,760	12,295
Total	184,420	78,668	263,088	75,849	7,705	83,554	346,642

Source: Ministry of Education, Culture and Higher Education of Somalia, 2019

Figure 1.6

Primary and Secondary enrolment by Authority (2018/19)



Enrollment by Authority

Source: Ministry of Education, Culture and Higher Education of Somalia, 2019

Table 1.8 School attendance ratio for primary

Net attendance ratios (NAR) and gross attendance ratios (GAR) for the defacto household population by sex and level of schooling and Gender Parity Index (GPI), according to background characteristics

Background Characteristics	Net Attendance Ratio ¹				Gross Attendance Ratio ²			
	Male	Female	Total	Gender Parity Index ³	Male	Female	Total	Gender Parity Index ³
Residence								
Urban	22.7	19.4	21.1	0.85	32.4	28.1	30.3	0.87
Rural	19.5	18.6	19.1	0.95	30.0	27.6	28.8	0.92
Nomadic	2.1	1.1	1.6	0.49	3.0	1.7	2.3	0.56
Wealth quintile								
Lowest	8.6	7.0	7.8	0.81	13.4	10.5	12.0	0.79
Second	13.3	12.3	12.8	0.93	20.8	18.1	19.5	0.87
Middle	18.6	16.1	17.4	0.87	28.2	24.5	26.4	0.87
Fourth	25.6	20.9	23.3	0.82	36.6	31.1	33.9	0.85
Highest	32.6	29.5	31.0	0.91	44.5	41.3	42.9	0.93
Total	19.7	17.2	18.5	0.88	28.6	25.2	26.9	0.88

¹ The NAR for primary school is the percentage of the primary-school age (6-13 years) population that is attending primary school. The NAR for secondary

² The GAR for primary school is the total number of primary school students, expressed as a percentage of the official primary-school-age population.

If there are significant numbers of overage and underage students at a given level of schooling, the GAR can exceed 100 percent

³ The Gender Parity Index for primary school is the ratio of the primary school NAR (GAR) for females to the NAR (GAR) for males.

Source: SHDS 2020

Table 1.9 School Attendance Ratio for Secondary

Net attendance ratios (NAR) and gross attendance ratios (GAR) for the defacto household population by sex and level of schooling and Gender Parity Index (GPI), according to background characteristics

Background Characteristics	Net Attendance Ratio ¹				Gross Attendance Ratio ²			
	Male	Female	Total	Gender Parity Index ³	Male	Female	Total	Gender Parity Index ³
Residence								
Urban	14.2	11.1	12.5	0.78	37.9	27.2	32.2	0.72
Rural	5.9	2.3	4.0	0.40	14.1	7.1	10.3	0.50
Nomadic	0.1	0.0	0.0	0.00	0.8	0.1	0.5	0.10
Wealth quintile								
Lowest	0.7	0.3	0.5	0.44	2.2	1.2	1.7	0.52
Second	3.1	2.0	2.5	0.67	8.0	4.8	6.4	0.61
Middle	8.0	4.8	6.3	0.60	22.6	12.9	17.4	0.57
Fourth	13.5	11.3	12.3	0.84	38.3	29.2	33.5	0.76
Highest	26.2	17.8	21.5	0.68	64.7	42.5	52.3	0.66
Total	10.6	7.9	9.2	0.74	28.1	19.6	23.6	0.70

¹ The NAR for secondary school is the percentage of the secondary-school age (14-17 years) population that is attending secondary school. By definition, the NAR cannot exceed 100 percent

² The GAR for secondary school is the total number of secondary school students, expressed as a percentage of the official secondary-school-age population.

If there are significant numbers of overage and underage students at a given level of schooling, the GAR can exceed 100 percent

³ The Gender Parity Index for secondary school is the ratio of the secondary school NAR (GAR) for females to the NAR (GAR) for males.

Source: SHDS 2020

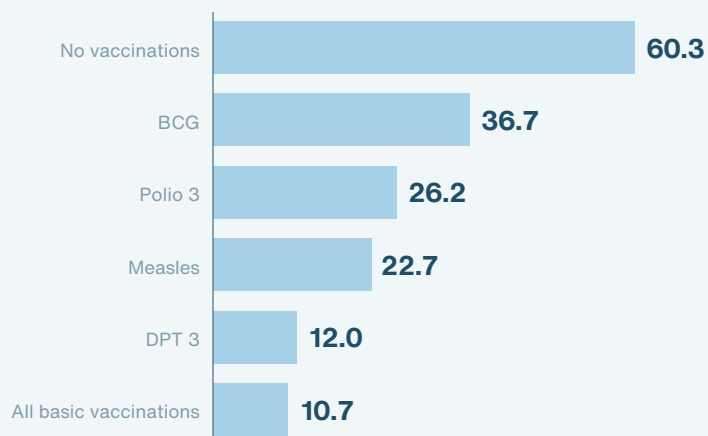
Health



Child Health

Figure 1.7

Vaccination Coverage for children age 12-23 months

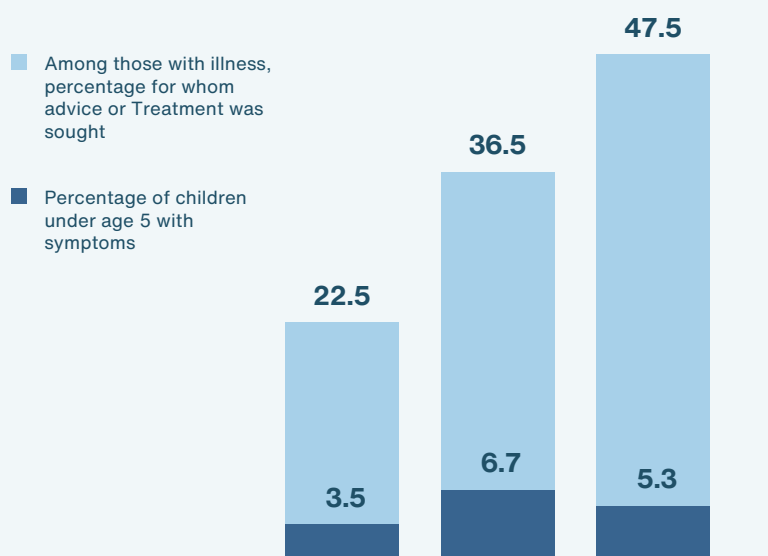


Percent of children aged 12-23 months who received specific vaccines at any time before the survey.

Source: SHDS 2020

Figure 1.8

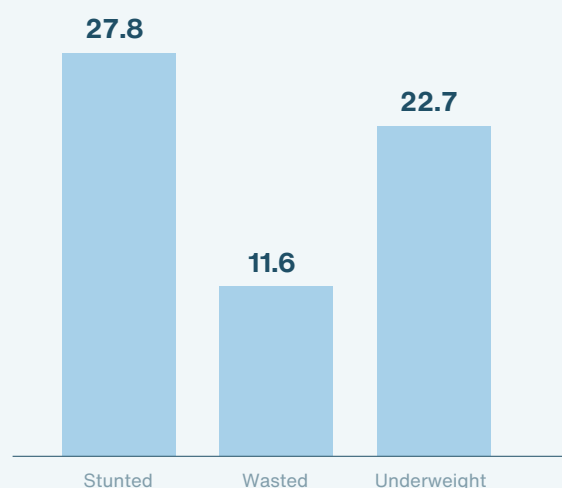
Prevalence and treatment of childhood illness



Source: SHDS 2020

Child Nutrition

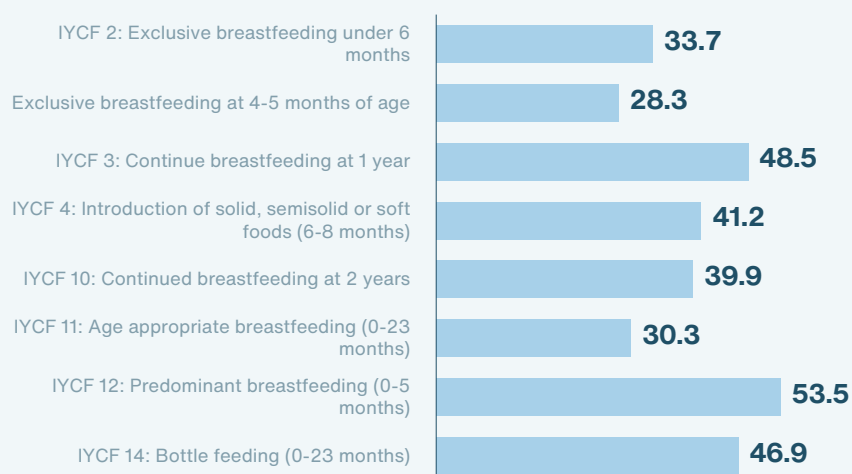
Figure 1.9
Nutritional status of children



Percent of children under five years classified as malnourished according to three anthropometric indices

Source: SHDS 2020

Figure 1.10
IYCF indicators on breastfeeding status



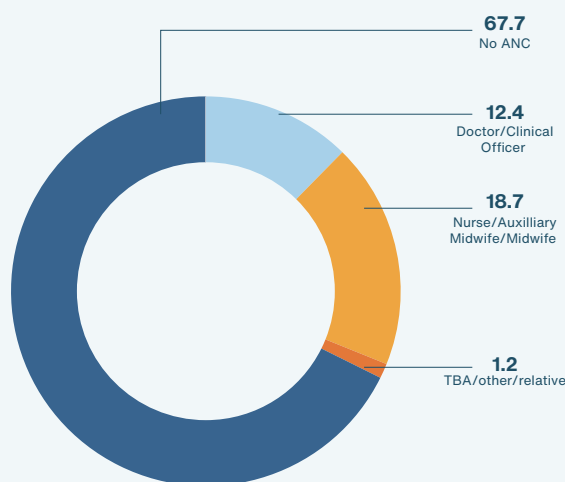
Indicators on breastfeeding by age in months

Source: SHDS 2020

Maternal Health

Figure 1.11

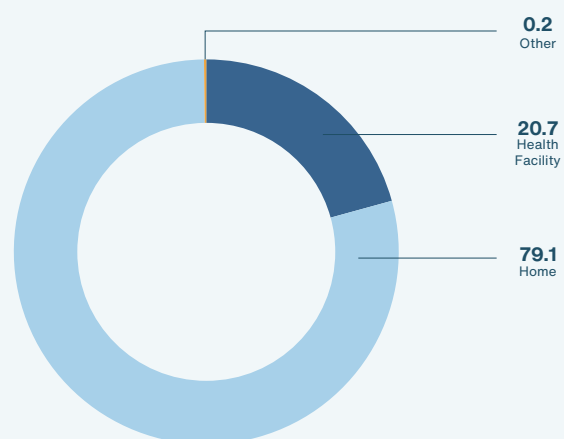
Percent distribution of mothers who had children in the five years before the survey, by source of antenatal care received during pregnancy



Percent distribution of mothers who had children in the five years before the survey, by source of antenatal care received during pregnancy

Figure 1.12

Place of delivery percent distribution of live births in the five years preceding the survey by place of delivery



Percent distribution of live births in the five years preceding the survey by place of delivery

Source: SHDS 2020

Table 1.10 Prevalence of chronic diseases by background characteristics

Percentage of household members who have at least one chronic disease, diagnosed by a physician, who get treatment regularly by background characteristics

Background Characteristics	Percentage of HH members who have at least one chronic disease	Percentage of HH members who have at least one chronic diagnosed by physician	Percentage of HH Members who have at least one chronic and get treated	Number of persons
Sex of household member				
Male	4.7	3.8	2.6	48,352
Female	6.7	5.3	3.5	50,632
Types of residence				
Urban	6.5	5.4	3.8	63,079
Rural	4.7	3.6	2.2	25,117
Nomadic	3.5	2.1	0.8	10,790
Wealth quintile				
Lowest	3.9	2.5	1.2	19,956
Second	5.2	3.6	2.3	19,375
Middle	6.0	4.8	3.2	19,835
Fourth	6.9	5.9	4.1	19,865
Highest	6.5	6.0	4.5	19,954
Total	5.7	4.6	3.1	98,985

Total includes household members with missing information on age.

Chronic Diseases and Disabilities

Table 1.11 Prevalence of disability and Common types of disability

Prevalence of household members with disabilities, percentage who suffer from specific types of disabilities, by background characteristics		
Background characteristics	Prevalence of disabled persons	Total
Sex of household member		
Male	4.6	48,352
Female	4.9	50,632
Age		
<5	4.6	19,985
5-9	3.4	18,914
10-14	3.7	14,951
15-19	3.9	10,778
20-24	3.8	6,262
25-29	5.3	5,691
30-34	5.5	4,438
35-39	6.3	3,911
40-44	6.0	2,964
45-49	7.3	1,825
50-54	5.9	2,884
55-59	5.9	1,432
60-64	7.5	1,661
65-69	9.2	724
70+	13.5	2,565
Types of residence		
Urban	5.3	63,079
Rural	4.5	25,117
Nomadic	1.9	10,790
Total	4.7	98,985

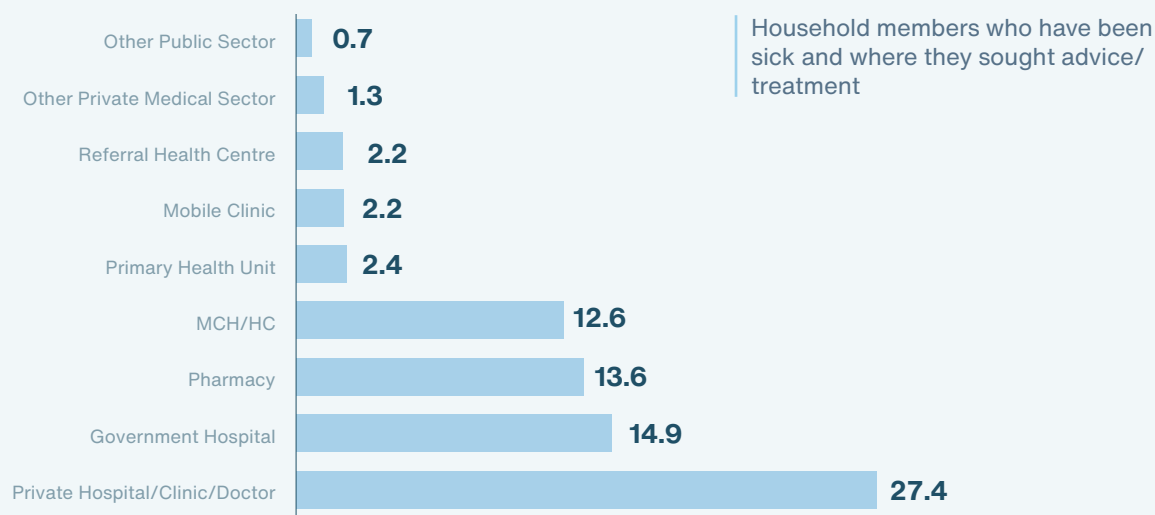
¹ Total includes household members with missing information on age

A person may have two reported diseases; consequently, the percentages

Tobacco Use and Khat Chewing

Figure 1.13

Source of advice or treatment



Source: SHDS 2020

Table 1.12 Smoking or using tobacco

Percentage of household members aged 10 years or older, who smoke cigarette or using tobacco by background characteristics

Background characteristics	Percentage of household members who smoke cigarette or use tobacco	Number of Household members
Sex		
Male	7.9	28,649
Female	0.8	31,437
Types of residence		
Urban	3.9	38,282
Rural	4.1	15,160
Nomadic	5.8	6,643
Education level		
No Education	4.2	43,412
Primary	3.7	9,782
Secondary	5.6	4,565
Higher	3.5	2,326
Wealth quintile		
Lowest	5.5	12,053
Second	4.4	11,441
Middle	3.9	11,902
Fourth	3.6	12,128
Highest	3.5	12,561
Number of Household members	4.2	60,085

Source: SHDS 2020

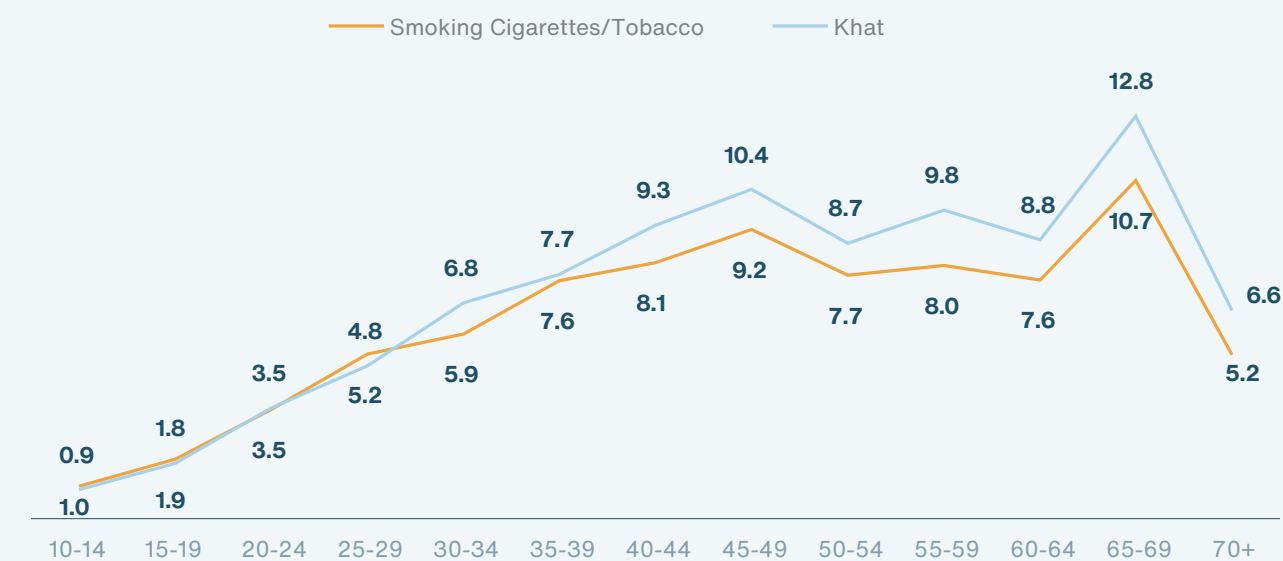
Table 1.13 Usage of Khat

Percentage of household members aged 10 years or older, who use Khat by background characteristics		
Background characteristics	Percentage of household members who use Khat	Number of Household members
Sex		
Male	9.0	28,649
Female	0.4	31,437
Types of residence		
Urban	4.1	38,282
Rural	4.7	15,160
Nomadic	6.2	6,643
Education level		
No Education	4.5	43,412
Primary	3.8	9,782
Secondary	5.7	4,565
Higher	4.8	2,326
Wealth quintile		
Lowest	6.1	12,053
Second	4.5	11,441
Middle	4.1	11,902
Fourth	4.0	12,128
Highest	3.7	12,561
Number of Household members	4.5	60,085

Source: SHDS 2020

Figure 1.14

Percentage of Household members who smoke cigarettes or use tobacco, and chew khat by age

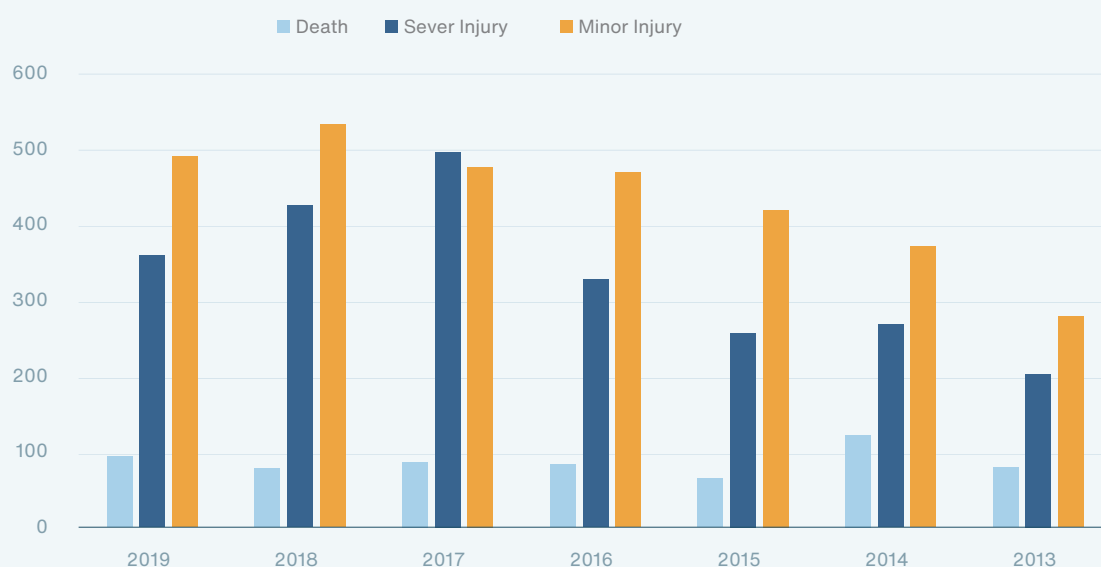


Percentage of household members who smoke cigarettes or use tobacco, and chew khat by age

Source: SHDS 2020

Road Traffic accidents

Figure 1.15
Road Accidents



Road traffic accidents by magnitude
in Mogadishu, 2013-2019

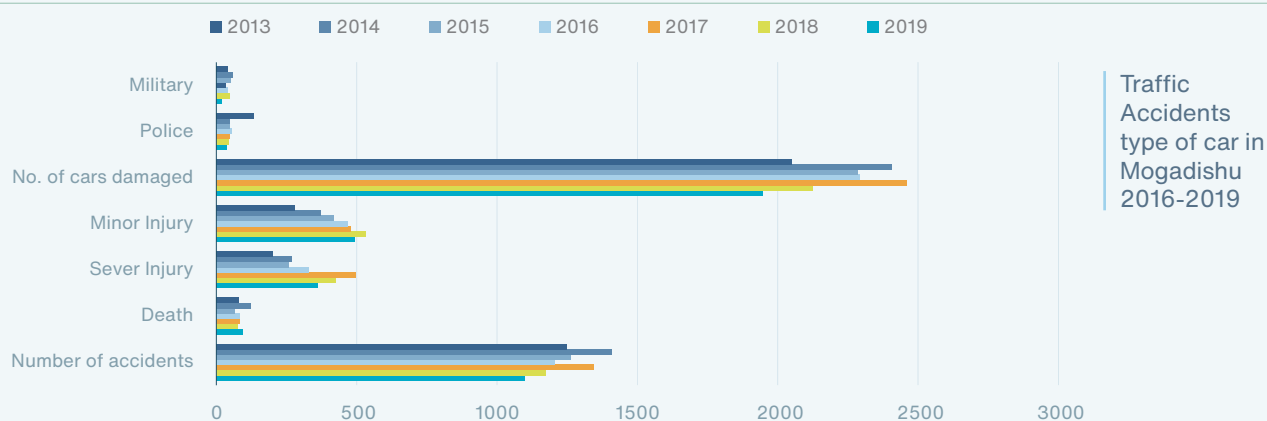
Source: SHDS 2020

Table 1.14 Road traffic accidents by magnitude in Mogadishu, 2013-2019

Year	Road traffic accidents	Magnitudes of Accident		
		Death	Sever Injury	Minor Injury
2019	1,098	94	360	491
2018	1,171	77	426	533
2017	1,344	86	497	477
2016	1,204	83	328	470
2015	1,263	65	257	420
2014	1,408	122	268	371
2013	1,248	79	203	279

Source: Traffic police, 2019

Figure 1.16
Traffic accidents type of car in Mogadishu 2016-2019



Source: Traffic Police, 2019

Table 1.15 Road traffic accidents by magnitude and type of car in Mogadishu 2013-2019

Year	Number of accidents	Magnitude of accident			No. of cars damaged	Police	Military	AMISOM	Auto rickshaw	Motorcycle	Other
		Death	Sever Injury	Minor Injury							
2019	1098	94	360	491	1945	38	20	7	844	87	23
2018	1,171	77	426	533	2,124	44	47	18	803	102	15
2017	1344	86	497	477	2459	49	43	22	706	89	21
2016	1204	83	328	470	2291	55	32	24	468	98	27
2015	1263	65	257	420	2286	49	51	15	377	0	0
2014	1408	122	268	371	2407	48	59	9	217	217	36
2013	1248	79	203	279	2051	134	42	15	146	0	0

Source: Traffic Police, 2019

Migration

Table 1.16 International Passengers movements, 2019

Month	International Passengers		Total movement
	Arrival	Departure	
January	6,934	10,447	17,381
February	6,129	9,128	15,257
March	6,999	9,572	16,571
April	7,226	9,181	16,407
May	7,782	9,287	17,069
June	8,072	2,839	10,911
July	9,838	13,098	22,936
August	12,586	9,055	21,641
September	10,154	8,414	18,568
October	8,589	8,154	16,743
November	8,334	8,660	16,994
December	10,530	9,656	20,186
Total	103,173	107,491	210,664

Table 1.17 Number of monthly arrivals and departures by Citizens and foreign 2019

Month	Departure		Arrival	
	Somali	Foreign	Somali	Foreign
January	8,560	6,934	6,796	10,447
February	8,134	6,129	6,547	9,128
March	6,869	6,999	5,019	9,572
April	7,063	7,226	5,664	9,181
May	7,887	7,782	5,442	9,287
June	6,080	8,072	8,085	2,839
July	14,143	9,838	6,980	13,098
August	9,985	12,586	12,104	9,055
September	8,596	10,154	7,408	8,414
October	8,732	8,589	6,316	8,154
November	10,358	8,334	7,878	8,660
December	10,324	10,530	8,268	9,656

Source: Immigration and Naturalization Directorate of Somalia, 2019

Table 1.18 International passenger by country of origin

Country	Arrival		Total
	Male	Female	
Kenya	21,829	10,156	31985
Djibouti	3,512	3,007	6519
Finland	2,742	1,739	4481
Italy	2,129	2,053	4182
Netherland	7,528	7,122	14650
Sweden	1,037	978	2015
Turkey	5,165	4,958	10123
Uganda	8,974	6,769	15743
UK	23,859	19,356	43215
USA	14,804	12,447	27251
Total	91,579	68,585	160,164

Source: Immigration and Naturalization Directorate of Somalia, 2019



CHAPTER 2

Economic Statistics





Production



Local Fishery Production

Table 2.1 Monthly fish meat production (in ton) in Mogadishu, 2012 – 2019

Months	2012	2013	2014	2015	2016	2017	2018	2019
January	124	63	80	104	106	52	530	297
February	83	29	32	57	59	25	284	264
March	26	37	41	55	63	66	287	170
April	29	60	91	110	107	107	504	198
May	36	58	41	101	99	328	663	202
June	24	34	22	48	48	34	211	204
July	10	5	4	19	19	95	152	186
August	3	3	2	11	11	85	115	210
September	6	4	6	16	19	176	225	330
October	22	25	28	21	21	267	385	346
November	25	20	15	55	55	301	469	304
December	17	18	26	52	52	199	364	281
Total	405	356	387	649	660	1,734	4,190	2,993

Source: Ministry of Fishery and Marine Resources

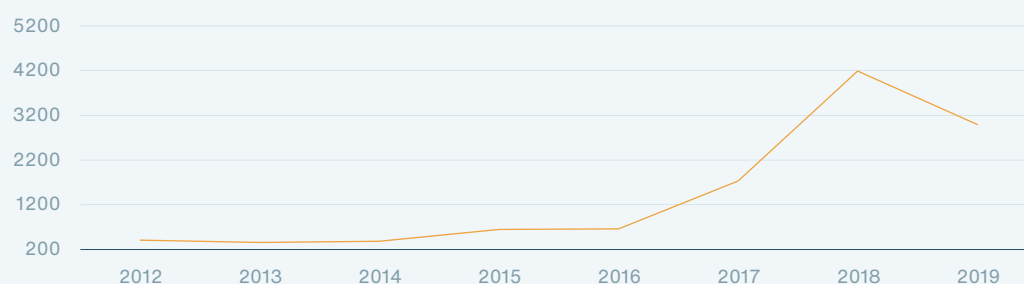
Table 2.2 Annual Fish Meat Production of Mogadishu in (Ton) by type of 2019

Years	Tuna	King fish	Grouper saber fish	Cell fish	Lobster	Sharks	Other Fishery
2012	228	74	51	17	2	22	12
2013	136	99	50	19	4	36	12
2014	148	100	59	26	7	37	11
2015	249	138	88	74	8	67	25
2016	223	138	97	74	7	95	26
2017	454	309	272	296	2	258	143
2018	765	512	509	469	76	416	296
2019	780	495	496	486	68	408	259

Source: Ministry of Fishery and Marine Resources

Figure 2.1

Annual Fish Production in (in ton) by type in Mogadishu, 2012-2019



Trend of Fish Production

Source: Ministry of Fishery and Marine Resources

Price Statistics²

Table 2.3 Monthly Consumer Price Indices from 2016-2019

Month	2016	2017	2018	2019
January	99.8	102.3	106.2	109.6
February	99.7	101.6	107.4	110.8
March	100.0	101.5	107.4	110.8
April	100.6	102.9	108.7	114.9
May	100.7	104.6	110.3	116.8
June	100.9	105.6	109.8	117.0
July	101.3	105.7	108.9	116.4
August	101.2	105.7	109.1	115.4
September	101.1	106.7	110.4	116.1
October	100.8	107.3	111.6	116.3
November	103.6	107.6	111.8	116.1
December	101.5	107.7	111.2	114.6

Source: Somalia National Bureau of Statistics

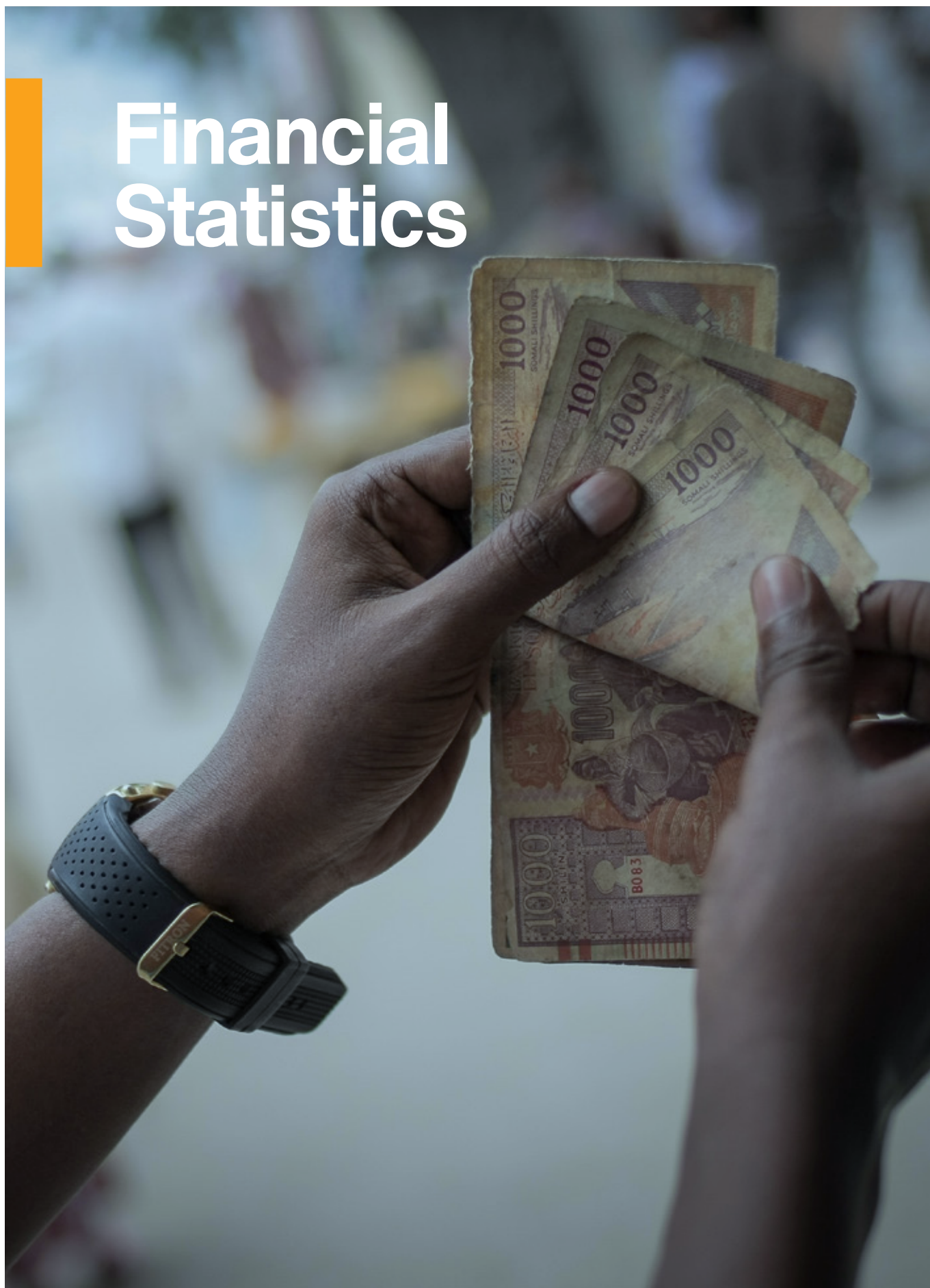
Table 2.4 Monthly and annual percentage of CPI, 2016-2019

Month	2016		2017		2018		2019	
	% Annual change	% monthly change	% Annual change	% monthly change	% Annual change	% monthly change	% Annual change	% monthly change
January	2.25	-0.51	2.54	0.79	3.83	-1.35	3.18	-1.39
February	1.29	-0.08	1.94	-0.66	5.70	1.12	3.09	1.03
March	0.27	0.32	1.50	-0.12	5.78	-0.03	3.17	0.04
April	0.52	0.54	2.32	1.35	5.68	1.25	5.66	3.70
May	0.75	0.18	3.79	1.62	5.51	1.46	5.88	1.67
June	0.89	0.17	4.63	0.98	3.96	-0.50	6.60	0.17
July	-2.62	0.34	4.35	0.08	3.10	-0.75	6.81	-0.55
August	-3.88	-0.05	4.48	0.08	3.16	0.14	5.80	-0.82
September	-4.00	-0.10	5.50	0.87	3.46	1.17	5.17	0.57
October	0.68	-0.29	6.48	0.63	3.98	1.14	4.15	0.15
November	3.51	2.81	3.77	0.19	3.99	0.21	3.81	-0.12
December	1.21	-2.06	6.09	0.13	3.22	-0.62	3.13	-1.27

Source: Somalia National Bureau of Statistics

²The prices obtained from selected retail outlets in four data collection zones across Mogadishu. The reference period the CPI is December 2015.

Financial Statistics



Currency Exchange Rate

Table 2.5 Exchange rate 2009-2019

Year	Buying	Selling	Mid
	Rate	Rate	Rate
2009	31,428.80	31,715.98	31,572.39
2010	31,168.04	31,371.29	31,269.66
2011	29,865.08	30,068.59	29,966.84
2012	22,414.46	22,617.54	22,516.00
2013	19,184.75	19,382.85	19,283.80
2014	20,154.79	20,305.15	20,229.97
2015	22,252.40	22,256.07	22,254.24
2016	23,036.67	23,086.90	23,061.78
2017	23,092.44	23,103.53	23,097.99
2018	23,949.20	23,959.17	23,954.18
2019	25,873.87	25,883.87	25,878.87

Remittance

Table 2.6 Remittance inward and outward from 2017-2019

Total Inward Transfers to Somalia	2017	2018	2019
Inflows (in Millions of USD)			
Remittance	1,318.93	1,301.71	1,332.28
Business	408.37	493.9	749.3
Grants	342.09	388.69	480.51
Other Swift Transfer TT	-	-	129.29
Total inflow	2,069.39	2,184.30	2,691.37
Total Outward Transfers from Somalia			
Outflows (in Millions of USD)			
Remittance	913.79	723.81	936.04
Business	1,150.72	1,350.49	1,549.50
Grants	45.14	0.42	1.95
Other Swift Transfer TT			47.8
Total Outflow	2,109.65	2,074.72	2,535.28

Source: Central of Somalia, 2019

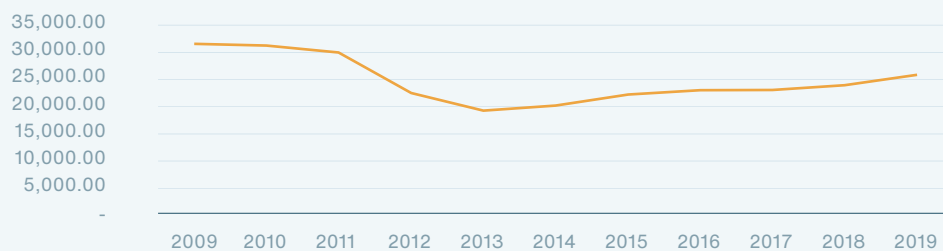
Fiscal data (Revenue and Expenditure in USD)

Table 2.7 Central government Revenue and expenditure

Description	Fiscal Year 2018		Fiscal Year 2019	
	Budget	YTD	Budget	YTD
Total Domestic Revenue	172,510,000	176,498,351	221,364,842	224,269,793
Tax revenue	127,860,000	132,173,291	146,125,000	157,329,548
Non-tax revenue	44,650,000	44,325,061	75,239,842	66,940,245
Total External Grants	124,562,158	93,441,494	168,793,991	108,681,386
Current - Grants Bilateral	43,456,259	29,533,127	35,100,000	36,416,829
Current - Grants - Multilateral	81,105,899	63,908,367	133,693,991	72,264,557
Total Revenue and Grants	297,072,158	269,939,846	390,158,833	332,951,179
Total Recurrent Expenditure	281,780,040	258,637,413	353,770,104	292,580,717
Compensation of employees	146,557,282	143,066,452	172,456,797	162,324,149
Use of goods and services	98,305,549	80,631,698	132,549,523	86,697,038
Grants	32,580,338	30,837,538	48,054,650	43,147,390
Net lending & repayment	-	-	-	-
Other expenses	4,336,871	4,101,725	709,135	412,140
Total Capital Expenditure	15,292,119	9,869,867	36,388,729	14,784,067
Consumption of fixed capital	15,292,119	9,869,867	36,388,729	14,784,067
Total Expenditure	297,072,158	268,507,280	390,158,833	307,364,785
	0	1,432,565	0	25,586,394

Source: Ministry of Finance, 2019

Figure 2.2
Exchange rate 2009-2019



Exchange rate (2009-2019)

Source: Central Bank of Somalia, 2019

Trade statistics

Table 2.8 Total import of 2019

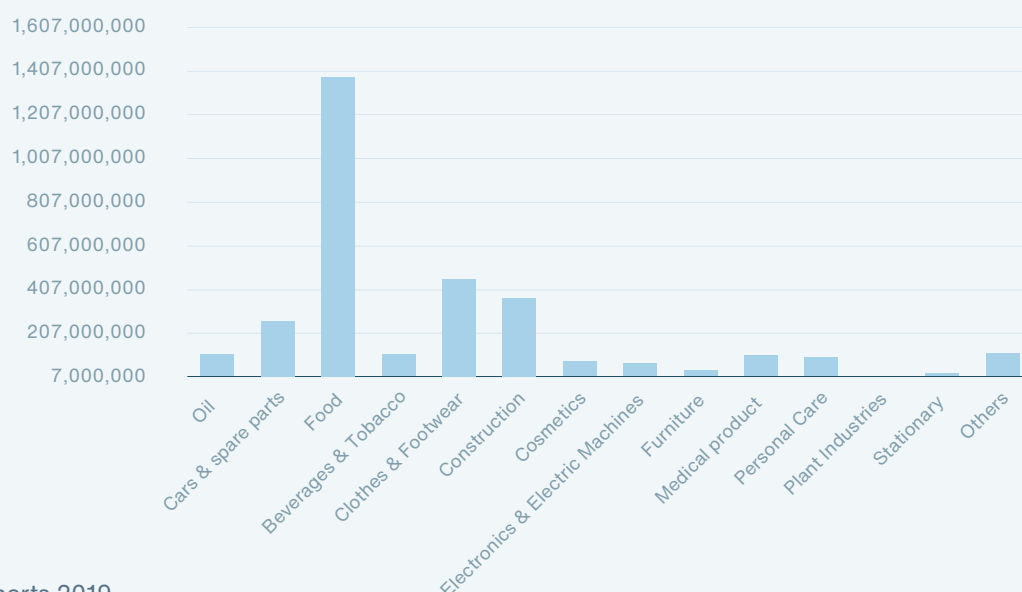
Summary of Import for 2019

Category	Mogadishu Port		Rest of The Economy	Total Imports
	Market Price	FOB		
Oil	79,888,231.24	44,610,790.13	66,916,185.20	111,526,975.33
Cars & spare parts	166,098,808.00	105,473,837.41	158,210,756.12	263,684,593.53
Food	780,538,132.50	550,190,473.11	825,285,709.66	1,375,476,182.77
Beverages & Tobacco	64,429,936.00	43,363,048.24	65,044,572.35	108,407,620.59
Clothes & Footwear	354,791,787.00	180,390,636.46	270,585,954.69	450,976,591.15
Construction	267,747,316.00	145,500,609.00	218,250,913.50	363,751,522.51
Cosmetics	72,830,424.00	31,441,636.57	47,162,454.86	78,604,091.43
Electronics & Electric Machines	55,443,488.00	27,186,609.38	40,779,914.07	67,966,523.45
Furniture	33,028,726.00	14,995,012.47	22,492,518.71	37,487,531.19
Medical product	71,013,728.00	41,787,443.18	62,681,164.77	104,468,607.95
Personal Care	65,010,727.00	37,194,677.97	55,792,016.96	92,986,694.93
Plant Industries	5,564,216.00	3,230,372.86	4,845,559.29	8,075,932.15
Stationary	15,150,525.00	10,032,305.55	15,048,458.33	25,080,763.88
Others	74,450,996.00	46,146,413.88	69,219,620.82	115,366,034.70
Total	2,105,987,040.74	1,281,543,866.21	1,922,315,799.32	3,203,859,665.53
Grand Total				3,203,859,665.53

Source: Central Bank of Somalia, 2019

Figure 2.3

Total import 2019



Total Imports 2019

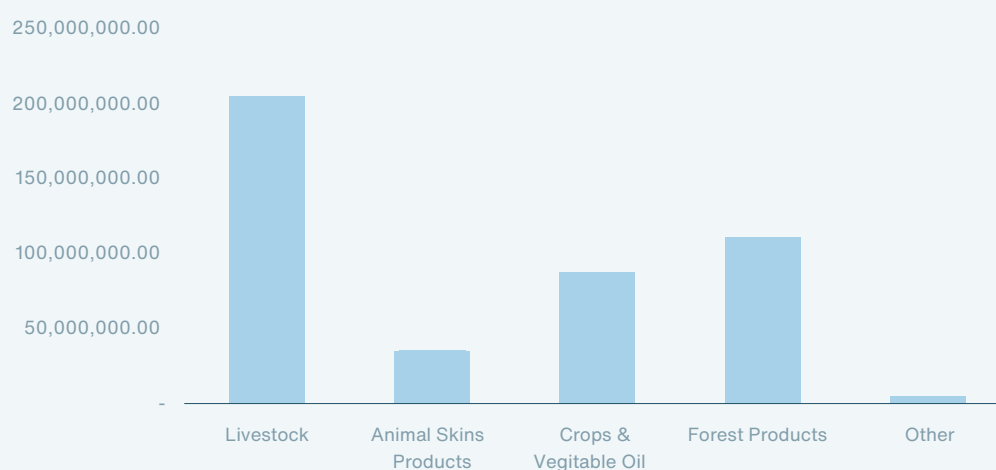
Source: Central Bank of Somalia, 2019

Table 2.9 Total Export of 2019 (USD)

Summary of Export for 2019			
Category	Mogadishu Port	Rest of The Economy	Total Exports
1 Livestock	80,766,404.00	124,596,606.00	205,363,010.00
2 Animal Skins Products	6,865,391.00	28,533,614.00	35,399,005.00
3 Crops & Vegetable Oil	50,438,544.00	37,303,862.67	87,742,406.67
4 Forest Products	44,120,110.00	67,220,790.00	111,340,900.00
5 Other	3,940,034.50	788,006.90	4,728,041.40
Total	186,130,483.50	258,442,879.57	444,573,363.07
Grand Total			444,573,363.07

Source: Central Bank of Somalia, 2019

Figure 2.4
 Export and import 2012-2017



| Total Exports 2019

Source: Central Bank of Somalia, 2019

Balance of Payment

Table 2.10 Balance of Payment 2018-2019 (Million US. Dollar)

Category	2018	2019
Current account balance	-486	-592
Overall trade balance	-4003	-4292
Goods balance	-3003	-3218
Exports of goods, f.o.b.	570	565
Imports of goods, f.o.b.	-3574	-3783
Services, net	-1000	-1074
Service credits	549	566
Service debit	-1549	-1640
Income (net)	-34	-36
Receipts	44	46
Payments	-78	-82
Current transfers (net)	3551	3736
Private (net), including remittances	1479	1580
Official	2072	2156
Capital account and financial account	456	605
of which:		
Foreign direct investment	408	447
Overall balance and error and omissions	-30	13
Change in central bank reserves (- = increase)	-27	-33
Memorandum items:		
Nominal GDP	4721	4958
External public debt

Source: Central Bank of Somalia, 2019

Gross Domestic Product (GDP)

Table 2.11 GDP by expenditure, current prices, million US Dollars, 2012-2019

Expenditure items	2012	2013	2014	2015	2016	2017	2018	2019
Household final consumption	5,520	5,865	6,934	7,313	7,537	7,968	8,471	9,476
Government final consumption	173	269	316	324	387	481	492	542
Gross fixed capital formation	577	610	642	675	707	789	868	957
Exports of goods and services	868	943	1,051	1,038	1,067	994	1,067	1,131
of which: livestock	491	538	600	558	455	268	294	294
Minus: Imports of goods and services	3,274	3,561	3,904	3,987	4,194	4,624	4,909	5,423
GDP at purchasers' prices	3,864	4,125	5,039	5,362	5,504	5,609	5,989	6,683
GDP per capita, US Dollars	326	339	403	417	416	412	428	465

Table 2.12 GDP by expenditure, current prices, and percentage shares

Expenditure items	2012	2013	2014	2015	2016	2017	2018	2019
Household final consumption	142.9	142.2	137.6	136.4	136.9	142.1	141.5	141.8
Government final consumption	4.5	6.5	6.3	6.0	7.0	8.6	8.2	8.1
Gross fixed capital formation	14.9	14.8	12.7	12.6	12.8	14.1	14.5	14.3
Exports of goods and services	22.5	22.8	20.9	19.4	19.4	17.7	17.8	16.9
of which: livestock	12.7	13.0	11.9	10.4	8.3	4.8	4.9	4.4
Minus: Imports of goods and services	84.7	86.3	77.5	74.4	76.2	82.4	82.0	81.1
GDP at purchasers' prices	100.0	100.0	100.0	100.0	100.0	100.0	100.0	100.0

Source: Somalia National Bureau of Statistics 2019

Table 2.13 GDP by expenditure, constant prices, million US Dollars

Expenditure items	2012	2013	2014	2015	2016	2017	2018	2019
Household final consumption	6,335	6,647	6,892	7,230	7,564	7,968	8,345	8,828
Government final consumption	180	278	304	315	378	481	486	490
Gross fixed capital formation	587	605	631	686	725	789	854	929
Exports of goods and services	874	906	937	957	1,032	994	1,052	1,064
of which: livestock	466	469	499	486	422	268	289	289
Minus: Imports of goods and services	3,389	3,674	3,741	3,933	4,213	4,624	4,844	5,154
GDP at purchasers' prices	4,586	4,762	5,023	5,255	5,486	5,609	5,893	6,157

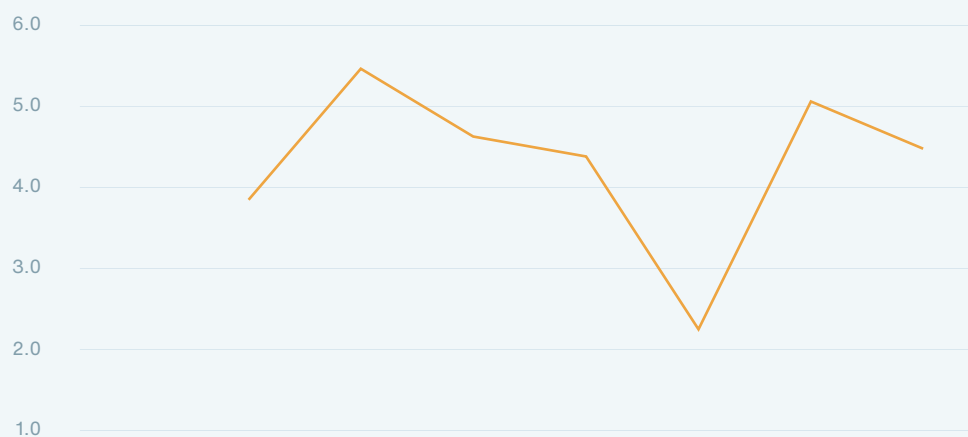
Table 2.14 GDP by expenditure, constant prices, percent annual change

Expenditure items	2012	2013	2014	2015	2016	2017	2018	2019
Household final consumption		4.9	3.7	4.9	4.6	5.3	4.7	5.8
Government final consumption		54.9	9.3	3.4	20.2	27.3	1.0	0.9
Gross fixed capital formation		3.1	4.2	8.8	5.6	8.9	8.3	8.7
Exports of goods and services		3.7	3.4	2.1	7.8	-3.6	5.8	1.2
of which: livestock		0.7	6.5	-2.6	-13.3	-36.5	7.9	0.0
Minus: Imports of goods and services		8.4	1.8	5.1	7.1	9.8	4.8	6.4
GDP at purchasers' prices		3.9	5.5	4.6	4.4	2.2	5.1	4.5

Source: Somalia National Bureau of Statistics 2019

Figure 2.5

Gross Domestic Product (GDP) annual growth rate, 2013-2019



| GDP Annual growth rate (2012-2019)

Source: Somalia National Bureau of Statistics 2019



Email:
snbs@nbs.gov.so

Website:
www.nbs.gov.so

Telephone no.:
+252-61-3700080

Social media:
Facebook: facebook.com/nbssomalia/
Twitter: [@NBS_Somalia](https://twitter.com/NBS_Somalia)