



**SOMALI NATIONAL
BUREAU OF STATISTICS**
Federal Republic of Somalia

CONSUMER PRICE INDEX

SOMALIA



MAY 2025

Consumer Price Index, Somalia

Foreword

The Consumer Price Index (CPI) is a key economic indicator that measures the weighted aggregate change in retail prices of goods and services purchased by households in Somalia. It serves as the primary gauge of inflation, enabling policymakers, businesses, and researchers to assess price trends and make informed economic decisions.

Since January 2025, Somalia CPI is released considering new weights derived from 2022 Somalia Integrated Households' Budget Survey (SIHBS), adopting the new households' consumption classification (COICOP 2018), and representing all the Federal Members States. A Methodological Note will be made available on the SNBS web site.

The CPI is defined as:

"A measure of the weighted average change in retail prices paid by consumers for a fixed basket of goods and services over time." Key uses of CPI include:

- **Inflation Measurement:** The year-on-year (YoY) inflation rate compares current price levels to the same period in the previous year, serving as a tool for monetary and fiscal policy.
- **Economic Decision-Making:** Used by government agencies, businesses, and international organizations to adjust wages, contracts, and social benefits.
- **Macroeconomic Analysis:** Supports the evaluation of purchasing power, cost-of-living adjustments, and economic stability.

Price Collection Process:

- **Frequency:** Conducted during the first and third weeks of each month.
- **Geographic Coverage:** Mogadishu (Capital City), All Federal Member States (FMS).
- **Commodity Coverage:** 537 items, identified through the 2022 SIHBS, and classified by the Classification of Individual Consumption by Purpose (COICOP) 2018 across 13 divisions.

Key statistics

Annual

Over the twelve months to May 2025, the CPI rose 4.6%.

- The most significant price rises over the twelve months were Personal Care, Social Protection And Miscellaneous Goods And Services (+11.7%), Transport (+8.9%), Restaurants and Accommodation (+5.8%), Housing, Water, Electricity, Gas and Other Fuels (+4.5%), and Clothing and Footwear (+4.1%)
- Partially offsetting the rise was Information and Communication (-6.0%) and Alcoholic Beverages, Tobacco and Narcotics (-2.0%).
- Price increases were strong for the month of May across the states with Hirshabelle (+8.3%), South-West State (+8.0%), Galmudug (+6.4%), Jubaland (+5.8%) and Banadir (+5.8%). A minor offset from Puntland (-2.3%) had a dampening effect due to its significant weight.

Monthly

The CPI increased by 0.3% this month.

- The most significant price rises this month were Personal Care, Social Protection And Miscellaneous Goods And Services (+5.4%), Food and Non-Alcoholic Beverages (+1.7%), and Information and Communication (+1.3%).
- Partially offsetting the rise were Recreation, Sports and Culture (-3.2%), Education Services (-2.4%), Clothing and Footwear (-2.0%), Housing, Water, Electricity, Gas and Other Fuels (-2.0%) and Transport (-2.0%).
- The most significant price rises from the states came from SouthWest (+6.6%) with significant offsets coming from Galmudug (-7.1%)

Table 1. CPI, Somalia monthly and annual movements (%)

	Monthly change (%)	Annual change (%)
May-25	0.3%	4.6%
Apr-25	1.3%	3.6%
Mar-25	0.4%	3.9%

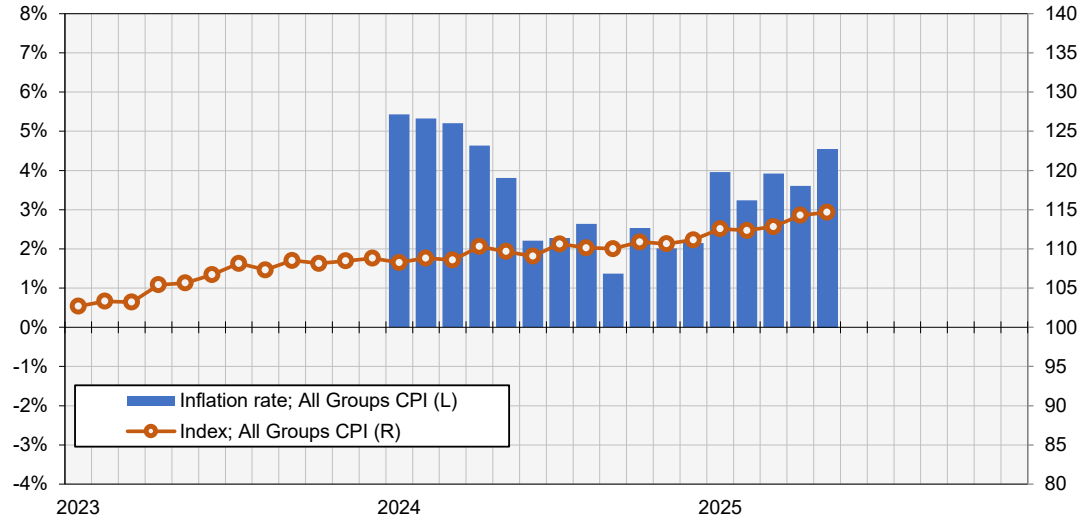
SOMALIA CPI REPORT - ALL DIVISIONS CPI

Graph 1. Inflation rate according to CPI

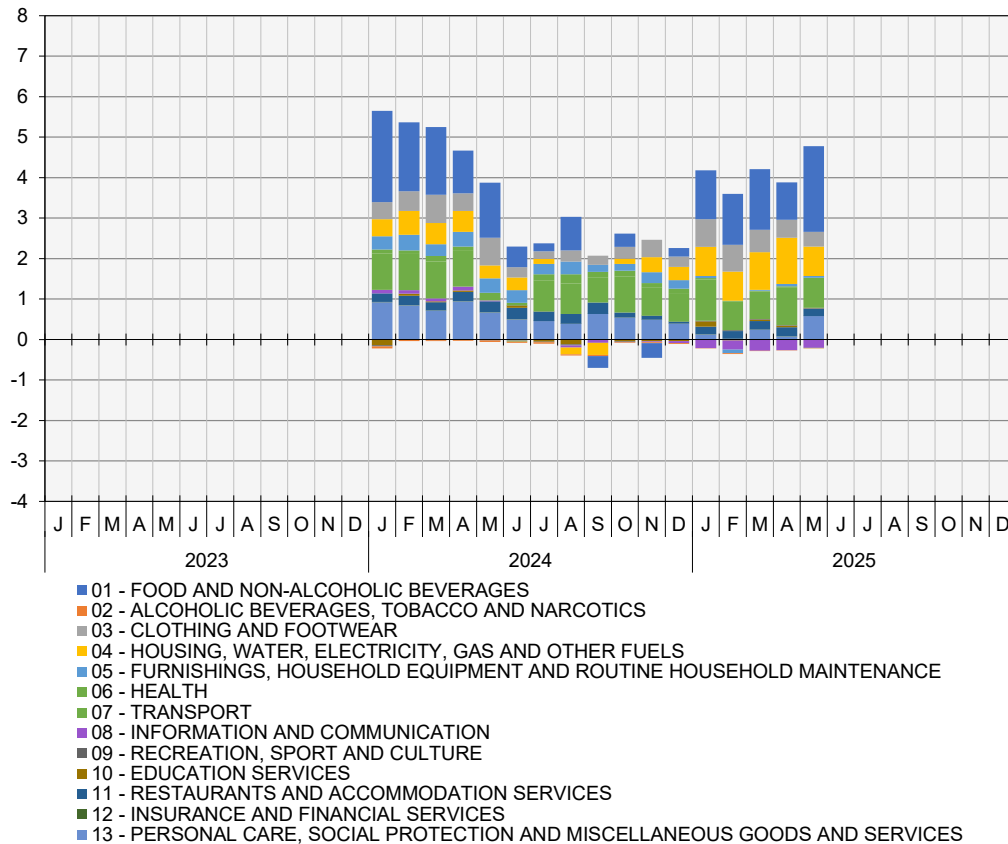
Percent change over twelve months

CPI Index

Index Reference Period = 2022



Graph 2. Points contribution (%) to inflation rate (contribution by division)



Summary of annual movement

Over the twelve months to the May 2025, the CPI rose 4.6%.

The most significant price rises over the twelve months were:

- Personal Care, Social Protection And Miscellaneous Goods And Services (+11.7%): Electric appliances for personal care (+25.29%)
- Transport (+8.9%): Passenger Transport Services (+10.44%)
- Restaurants and Accommodation Services (+5.8%): Food and Beverage Services (+6.20%); Accommodation (+4.45%)
- Housing, Water, Electricity, Gas and Other Fuels (+4.5%): Water supply (+13.01%); Maintenance, Repair and Security (+11.26%) with a slight offset by Electricity, Gas and Other Fuels (-0.82%)
- Clothing and Footwear (+4.1%): Clothing (+3.56); Footwear (+6.20)

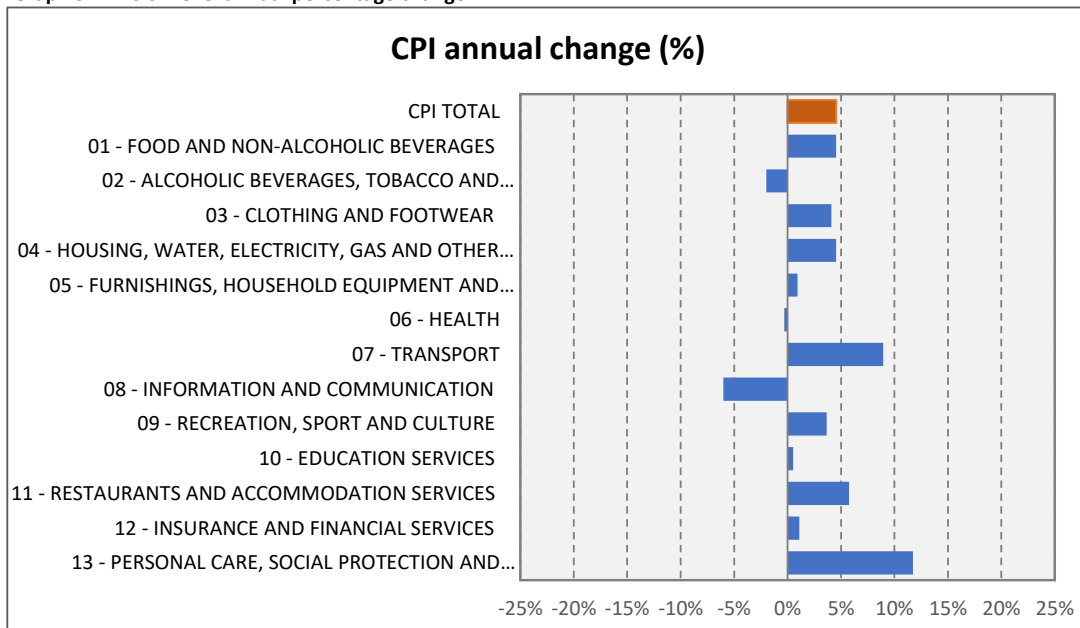
The most significant price falls over the twelve months were:

- Information and Communication (-6.0%): Equipment (-9.41%); Services (-4.43%)
- Alcoholic Beverages, Tobacco and Narcotics (-2.0%): Narcotics (-4.01%) offset by Tobacco (+9.05%)

Table 2. Division level annual percentage change

Division	% -change annual		
	Mar-25	Apr-25	May-25
CPI TOTAL	3.9%	3.6%	4.6%
01 - FOOD AND NON-ALCOHOLIC BEVERAGES	3.2%	2.0%	4.5%
02 - ALCOHOLIC BEVERAGES, TOBACCO AND NARCOTICS	-2.7%	-2.1%	-2.0%
03 - CLOTHING AND FOOTWEAR	6.3%	5.0%	4.1%
04 - HOUSING, WATER, ELECTRICITY, GAS AND OTHER FUELS	5.8%	7.2%	4.5%
05 - FURNISHINGS, HOUSEHOLD EQUIPMENT AND ROUTINE HOUSEHOLD MAI	0.5%	1.4%	0.9%
06 - HEALTH	1.4%	2.3%	-0.3%
07 - TRANSPORT	8.0%	11.1%	8.9%
08 - INFORMATION AND COMMUNICATION	-7.9%	-7.6%	-6.0%
09 - RECREATION, SPORT AND CULTURE	6.1%	4.1%	3.7%
10 - EDUCATION SERVICES	1.9%	2.0%	0.5%
11 - RESTAURANTS AND ACCOMMODATION SERVICES	6.5%	7.5%	5.8%
12 - INSURANCE AND FINANCIAL SERVICES	2.2%	0.8%	1.1%
13 - PERSONAL CARE, SOCIAL PROTECTION AND MISCELLANEOUS GOODS ANI	5.0%	1.4%	11.7%

Graph 3. Division level annual percentage change



Summary of monthly movement

The CPI increased by 0.3% this month. The largest positive movements came from:

- Personal Care, Social Protection and Miscellaneous Goods and Services (+5.4%): Personal Care (+6.01%); Other Personal Effect(+6.82%)
- Food and Non-Alcoholic Beverages (+1.7%): Food (+1.81%); Non - Alcoholic Beverages (-1.33%).
- Information and Communication (+1.3%): Equipment (+0.07%); Services (+1.86%)

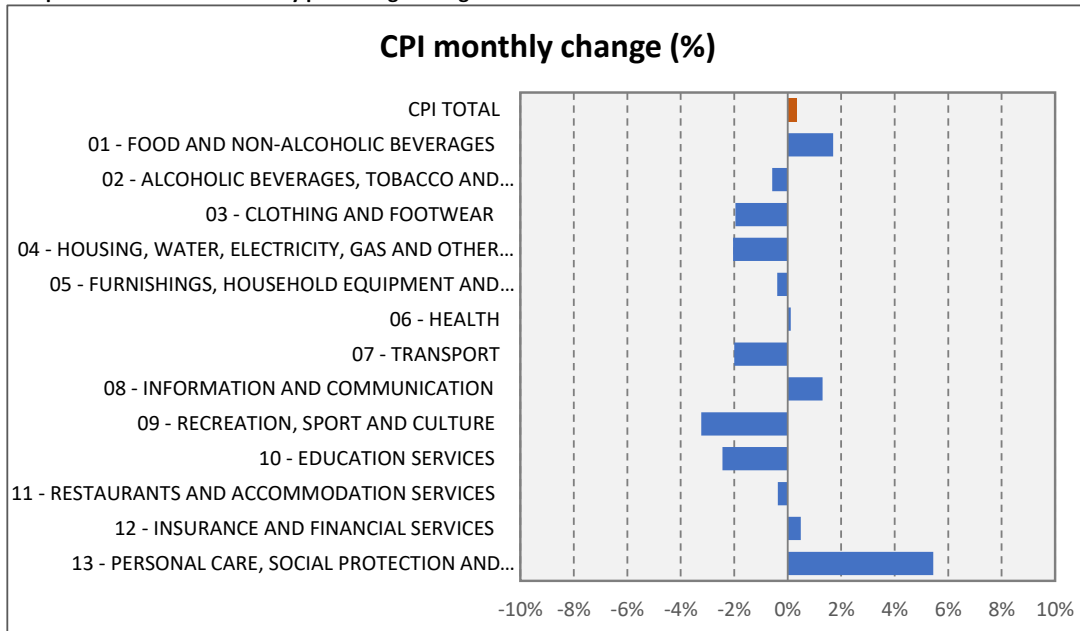
The most significant price falls this month were:

- Recreation, Sport and Culture (-3.2%): Recreation Durables (-1.76%); Recreational Services (-1.26%); Cultural Goods (-4.08)

Table 3. Division level monthly percentage change

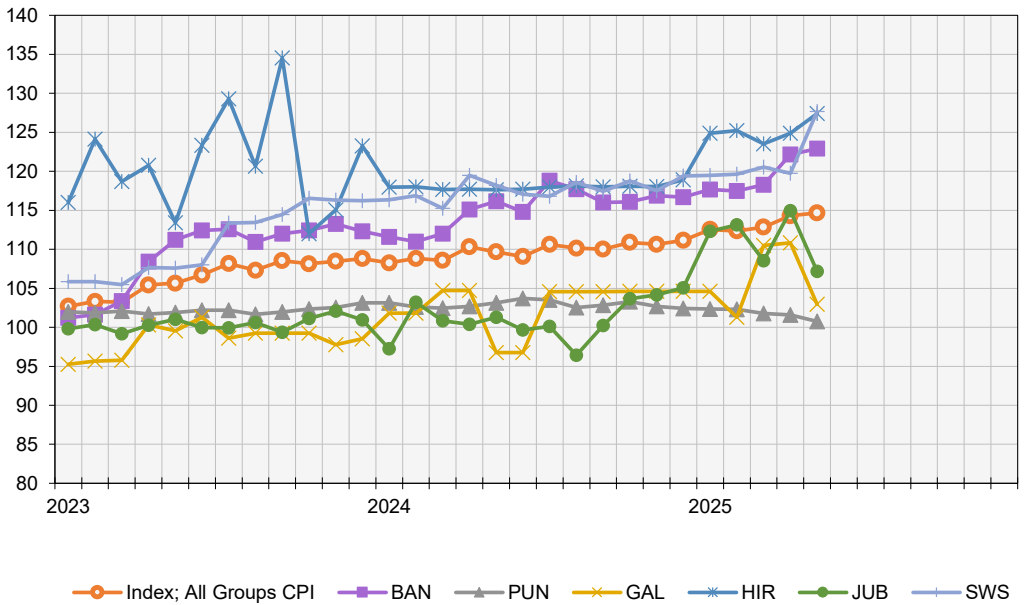
Division	%-change monthly		
	Mar-25	Apr-25	May-25
CPI TOTAL	0.4%	1.3%	0.3%
01 - FOOD AND NON-ALCOHOLIC BEVERAGES	0.4%	0.8%	1.7%
02 - ALCOHOLIC BEVERAGES, TOBACCO AND NARCOTICS	1.4%	0.3%	-0.6%
03 - CLOTHING AND FOOTWEAR	0.8%	1.1%	-2.0%
04 - HOUSING, WATER, ELECTRICITY, GAS AND OTHER FUELS	1.4%	1.8%	-2.0%
05 - FURNISHINGS, HOUSEHOLD EQUIPMENT AND ROUTINE HOUSE...	0.0%	1.8%	-0.4%
06 - HEALTH	1.7%	0.4%	0.1%
07 - TRANSPORT	-0.6%	3.1%	-2.0%
08 - INFORMATION AND COMMUNICATION	-2.1%	0.3%	1.3%
09 - RECREATION, SPORT AND CULTURE	0.3%	0.6%	-3.2%
10 - EDUCATION SERVICES	2.0%	0.7%	-2.4%
11 - RESTAURANTS AND ACCOMMODATION SERVICES	-0.6%	1.8%	-0.4%
12 - INSURANCE AND FINANCIAL SERVICES	0.0%	-0.1%	0.5%
13 - PERSONAL CARE, SOCIAL PROTECTION AND MISCELLANEOUS...	0.4%	1.5%	5.4%

Graph 4. Division level monthly percentage change

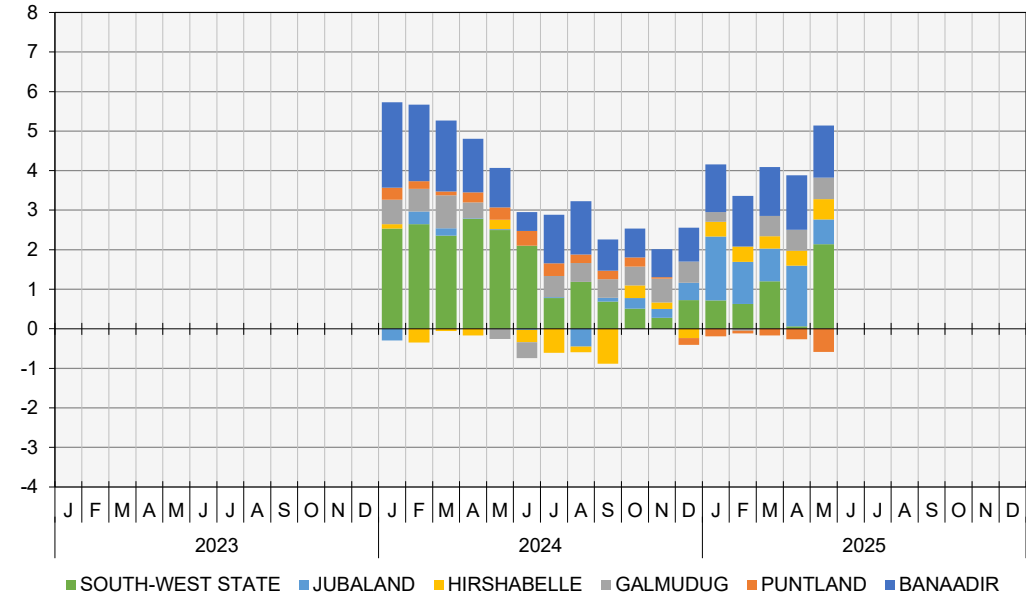


SOMALIA CPI REPORT - STATES COMPARISON

Graph 5. CPI Indices per State
Index Reference Period = 2022



Graph 6. Points contribution (%) to inflation rate (contribution by state)



Summary of annual movement

Over to the twelve Months to the May 2025, positive state movements came from:

- Hirshabelle (+8.3%): Restaurants And Accommodation Services (+38.28%)
- South-West State (+8.0%): (Transport (+20.45%), and Food and Non-alcoholic Beverages (+10.12%) with an offset from Khat (-14.95%).
- Galmudug (+6.4%): Food and Non-alcoholic Beverages (+14.59%), Health (+9.47%), Personal Care, Social Protection and Misc (+15.4%), Recreation, Sports and Culture (+1.47%)
- Banaadir (+5.8%): Transport (+20.70%), Furnishing, Household Equipment and Routine Household (+8.19%) and Personal Care, Social Protection and Misc (+4.59%) with an offset from Information and Communication (-18.33%)
- Jubaland (+5.8%): Recreation Sports and Culture (+17.32%), Housing, Water, Electricity, Gas and other Fuels (+21.01%) with an offset from Restaurants And Accommodation Services (-13.20%).

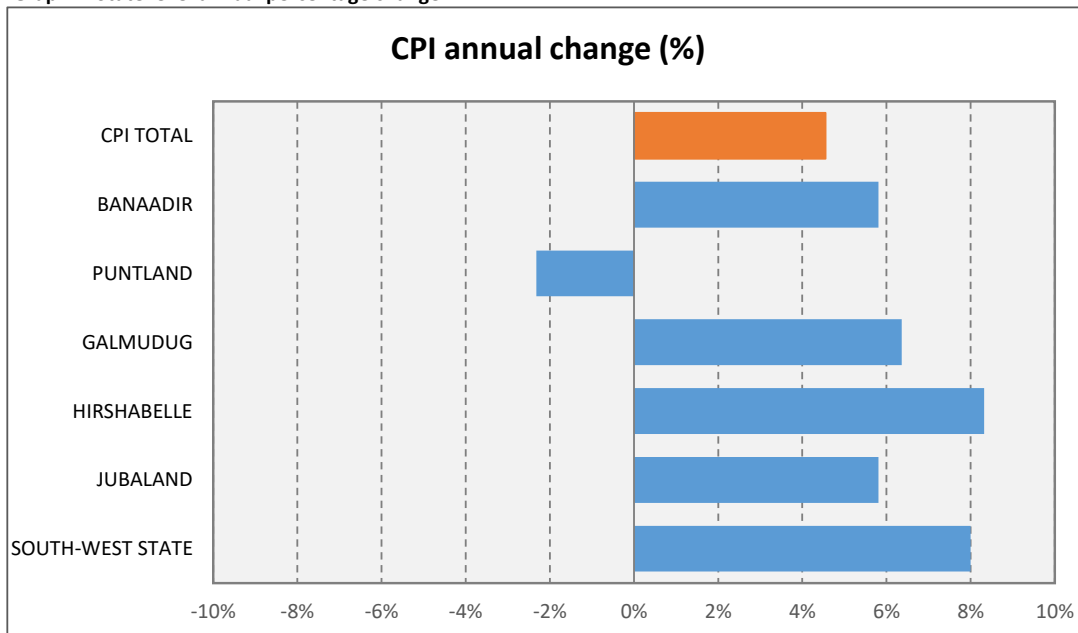
During the month of March 2025, negative movements came from:

- Puntland (-2.3%): Food and Non-Alcoholic Beverages (-3.6%)

Table 4. State level annual percentage change

State	% -change annual		
	Mar-25	Apr-25	May-25
CPI TOTAL	3.9%	3.6%	4.6%
BANAADIR	5.6%	6.1%	5.8%
PUNTLAND	-0.7%	-1.1%	-2.3%
GALMUDUG	5.5%	5.8%	6.4%
HIRSHABELLE	5.0%	6.1%	8.3%
JUBALAND	7.7%	14.5%	5.8%
SOUTH-WEST STATE	4.6%	0.2%	8.0%

Graph 7. State level annual percentage change



Summary of monthly movement

During the month of May 2025, positive movements came from:

- South-West State (+6.6%): Food and Non-Alcoholic Beverages (+9.29%)
- Hirsabelle (+2.0%): Personal Care, Social Protection and Misc(+32.80%).
- Banaadir (+0.6%): Information and Communication(+1.92%)

During the month of May 2025, negative movements came from:

- Galmudug (-7.1%): Food and non-alcoholic beverages (-9.7%)
- Jubaland (-6.7%): Furnishings, Household Equipment And Routine Household Maintenance (-5.20%)
- Puntland (-0.8%): Food and Non-Alcoholic Beverages (-1.9%)

Table 5. State level monthly percentage change

State	%-change monthly		
	Mar-25	Apr-25	May-25
CPI TOTAL	0.4%	1.3%	0.3%
BANAADIR	0.7%	3.3%	0.6%
PUNTLAND	-0.5%	-0.2%	-0.8%
GALMUDUG	9.1%	0.3%	-7.1%
HIRSHABELLE	-1.3%	1.1%	2.0%
JUBALAND	-4.1%	5.9%	-6.8%
SOUTH-WEST STATE	0.7%	-0.6%	6.6%

Graph 8. State level monthly percentage change

