



SOMALI NATIONAL
BUREAU OF STATISTICS
Federal Republic of Somalia

CONSUMER PRICE INDEX SOMALIA



NOVEMBER 2025

Consumer Price Index, Somalia

Foreword

The Consumer Price Index (CPI) is a key economic indicator that measures the weighted aggregate change in retail prices of goods and services purchased by households in Somalia. It serves as the primary gauge of inflation, enabling policymakers, businesses, and researchers to assess price trends and make informed economic decisions.

Since January 2025, Somalia CPI is released considering new weights derived from 2022 Somalia Integrated Households' Budget Survey (SIHBS), adopting the new households' consumption classification (COICOP 2018), and representing all the Federal Members States. A Methodological Note will be made available on the SNBS web site.

The CPI is defined as:

"A measure of the weighted average change in retail prices paid by consumers for a fixed basket of goods and services over time." Key uses of CPI include:

- Inflation Measurement: The year-on-year (YoY) inflation rate compares current price levels to the same period in the previous year, serving as a tool for monetary and fiscal policy.
- Economic Decision-Making: Used by government agencies, businesses, and international organizations to adjust wages, contracts, and social benefits.
- Macroeconomic Analysis: Supports the evaluation of purchasing power, cost-of-living adjustments, and economic stability.

Price Collection Process:

- Frequency: Conducted during the first and third weeks of each month.
- Geographic Coverage: Mogadishu (Capital City), All Federal Member States (FMS).
- Commodity Coverage: 537 items, identified through the 2022 SIHBS, and classified by the Classification of Individual Consumption by Purpose (COICOP) 2018 across 13 divisions.

Key statistics

Annual

Over the twelve months to November 2025, the CPI rose 4.8%.

- The most significant price rises over the twelve months were Personal Care, Restaurant and Accommodation services (+14.6%), Social Protection and Misc (+11.9%) Food and Non-Alcoholic Beverages (+6.1%), Education Services (+5.1%) and Health (+4.3%).
- Partially offsetting the rise was Alcoholic Beverages, Tobacco and Narcotics (-2.7%) and Information and Communication (-1.8%).
- Price increases were strong for the month of November across the states with South-West State (+9.1%), Banadir (+5.2%), Hirshabelle (+6.6%), Jubaland (+4.8%), and Galmudug (+4.2%). A minor offset from Puntland (-2.2%) had a dampening effect due to its significant weight.

Monthly

The CPI increased by 0.6% this month.

- The most significant price rises this month were Restaurant and Accommodation Services (+8.8%), Information and Communication (+4.8%) and Transport(+2.9%).
- Partially offsetting the rise was Furnishings, household equipment and routine household maintenance (-4.1%) and Alcoholic Beverages, Tobacco and Narcotics (-2.9%).
- The most significant price rises from Hirshabelle (+1.3%); only Galmudug recorded a slight decrease on monthly basis (-0.1%)

Table 1. CPI, Somalia monthly and annual movements (%)

	Monthly change (%)	Annual change (%)
Nov-25	0.6%	4.8%
Oct-25	0.7%	3.9%
Sep-25	0.7%	4.1%

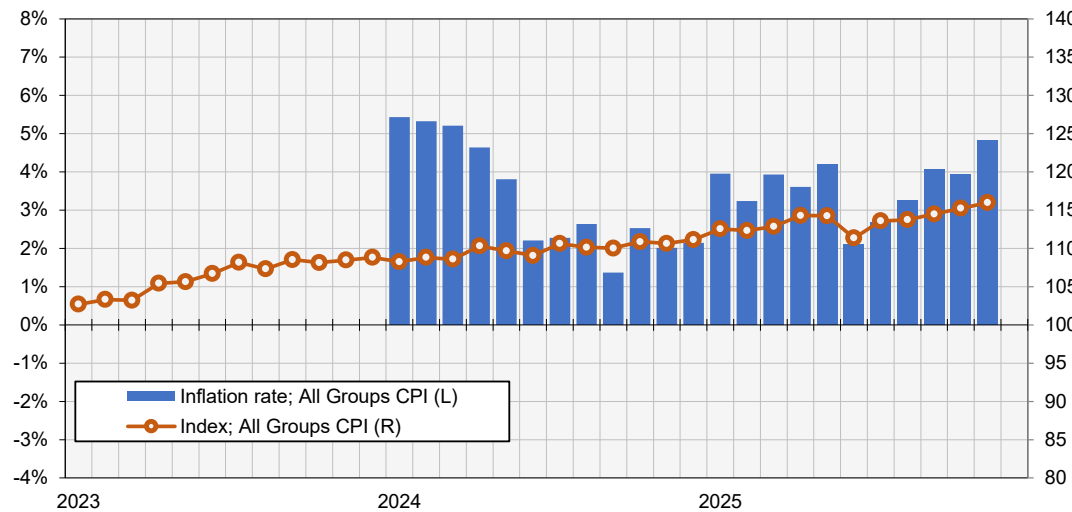
SOMALIA CPI REPORT - ALL DIVISIONS CPI

Graph 1. Inflation rate according to CPI

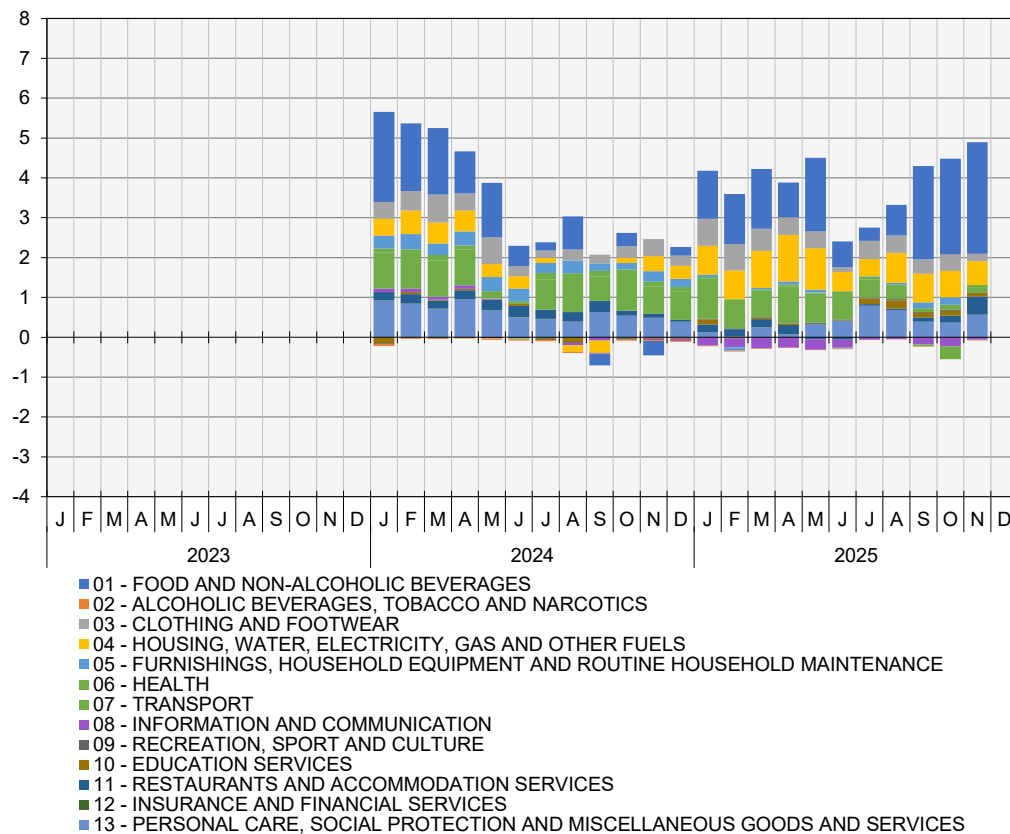
Percent change over twelve months

CPI Index

Index Reference Period = 2022



Graph 2. Points contribution (%) to inflation rate (contribution by division)



Summary of annual movement

Over the twelve months to the November 2025, the CPI rose by 4.8%.

The most significant price rises over the twelve months were:

- Personal Care, Social Protection and Miscellaneous Goods and Services (+11.9%): Personal Care (+13.16%); Other personal Effects (+3.87%).
- Restaurant and Accommodation Services (+14.6%): Restaurant Services (+16.61%); Accommodation Services (+6.00%).
- Food and Non-Alcoholic Beverages (+6.1%): Food (+6.41%); offset by Non-Alcoholic Beverages (-2.3%).
- Education Services (+5.1%): Education not defined by level (+8.69%) ; Early Childhood and Primary Education (+6.10%).
- Health (+4.3%): Inpatient Care Services (+20.84%); Medicine and Health Services (+7.58%).

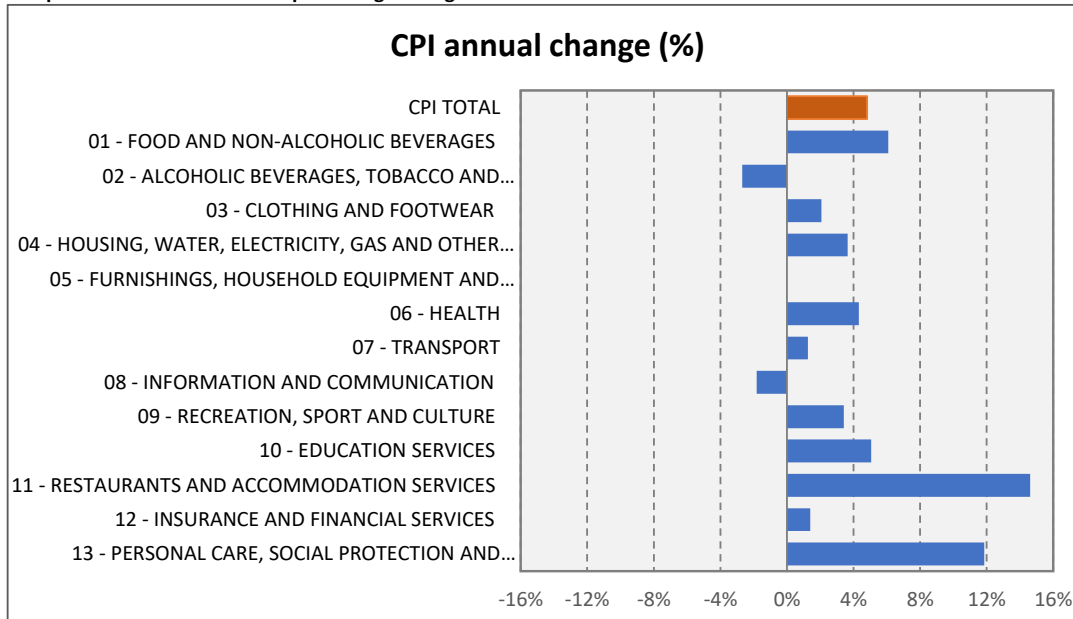
The most significant price falls over the twelve months were:

- Alcoholic Beverages, Tobacco and Narcotics (-2.7%): Narcotics (-4.4%); offset by Tobacco (+6.14%).
- Information and Communication Services (-1.8%): Information and comm. equipment (-15.15%).

Table 2. Division level annual percentage change

Division	% -change annual		
	Sep-25	Oct-25	Nov-25
CPI TOTAL	4.1%	3.9%	4.8%
01 - FOOD AND NON-ALCOHOLIC BEVERAGES	5.1%	5.2%	6.1%
02 - ALCOHOLIC BEVERAGES, TOBACCO AND NARCOTICS	-0.4%	0.0%	-2.7%
03 - CLOTHING AND FOOTWEAR	4.2%	4.8%	2.1%
04 - HOUSING, WATER, ELECTRICITY, GAS AND OTHER FUELS	4.4%	4.1%	3.7%
05 - FURNISHINGS, HOUSEHOLD EQUIPMENT AND ROUTINE HOUSEHOLD MAI	3.7%	4.7%	0.0%
06 - HEALTH	5.4%	7.5%	4.3%
07 - TRANSPORT	-0.6%	-3.6%	1.3%
08 - INFORMATION AND COMMUNICATION	-5.2%	-6.6%	-1.8%
09 - RECREATION, SPORT AND CULTURE	6.9%	8.0%	3.4%
10 - EDUCATION SERVICES	6.0%	7.0%	5.1%
11 - RESTAURANTS AND ACCOMMODATION SERVICES	3.4%	5.3%	14.6%
12 - INSURANCE AND FINANCIAL SERVICES	1.1%	0.6%	1.4%
13 - PERSONAL CARE, SOCIAL PROTECTION AND MISCELLANEOUS GOODS ANI	7.9%	7.5%	11.9%

Graph 3. Division level annual percentage change



Summary of monthly movement

The CPI increased by 0.6% this month. The largest positive movements came from:

- Restaurants and Accommodation Services (+8.8%): Food And Beverage Serving Services (+10.89%); offset by Accommodation Services (-0.27%).
- Information and Communication Services (+4.8%): Information and comm. services (+6.23%).
- Transport (+2.9%): Operation of personal transport equipment (+3.12%)

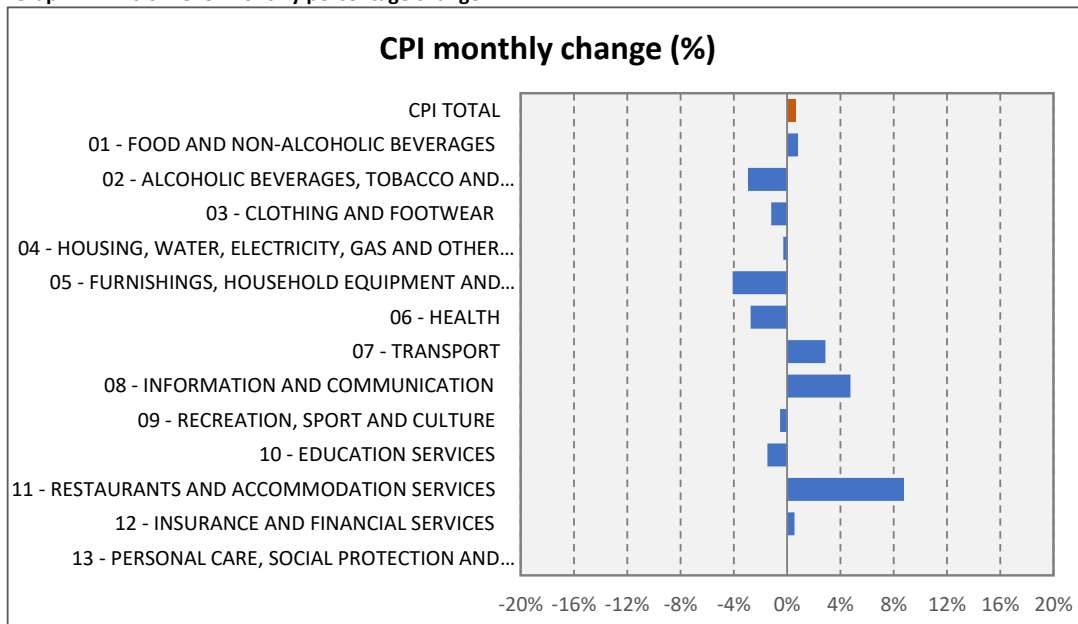
The most significant price falls for the month were:

- Alcoholic Beverages, Tobacco and Narcotics (-2.9%) : Narcotics (-2.78%); Tobacco (-3.66%)
- Furnishings, household equipment and routine household maintenance (-4.1%): Goods and Services for Routine Household Maintenance (-8.98%); Tools and Equipment for House and Garden (-7.98%)

Table 3. Division level monthly percentage change

Division	% -change monthly		
	Sep-25	Oct-25	Nov-25
CPI TOTAL	0.7%	0.7%	0.6%
01 - FOOD AND NON-ALCOHOLIC BEVERAGES	2.2%	0.5%	0.8%
02 - ALCOHOLIC BEVERAGES, TOBACCO AND NARCOTICS	1.3%	0.7%	-2.9%
03 - CLOTHING AND FOOTWEAR	-0.5%	0.9%	-1.2%
04 - HOUSING, WATER, ELECTRICITY, GAS AND OTHER FUELS	0.2%	1.4%	-0.3%
05 - FURNISHINGS, HOUSEHOLD EQUIPMENT AND ROUTINE HOUSE...	1.0%	1.0%	-4.1%
06 - HEALTH	1.1%	0.1%	-2.7%
07 - TRANSPORT	-5.4%	0.1%	2.9%
08 - INFORMATION AND COMMUNICATION	-2.9%	0.1%	4.8%
09 - RECREATION, SPORT AND CULTURE	1.3%	0.3%	-0.5%
10 - EDUCATION SERVICES	0.1%	0.5%	-1.5%
11 - RESTAURANTS AND ACCOMMODATION SERVICES	3.2%	1.2%	8.8%
12 - INSURANCE AND FINANCIAL SERVICES	0.8%	-0.1%	0.6%
13 - PERSONAL CARE, SOCIAL PROTECTION AND MISCELLANEOUS...	1.1%	0.4%	0.0%

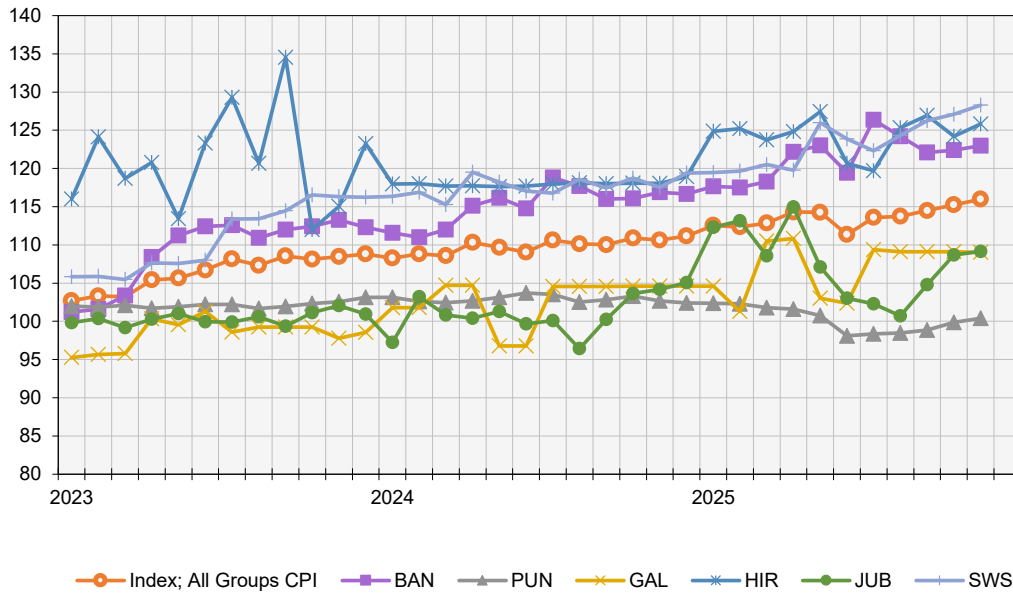
Graph 4. Division level monthly percentage change



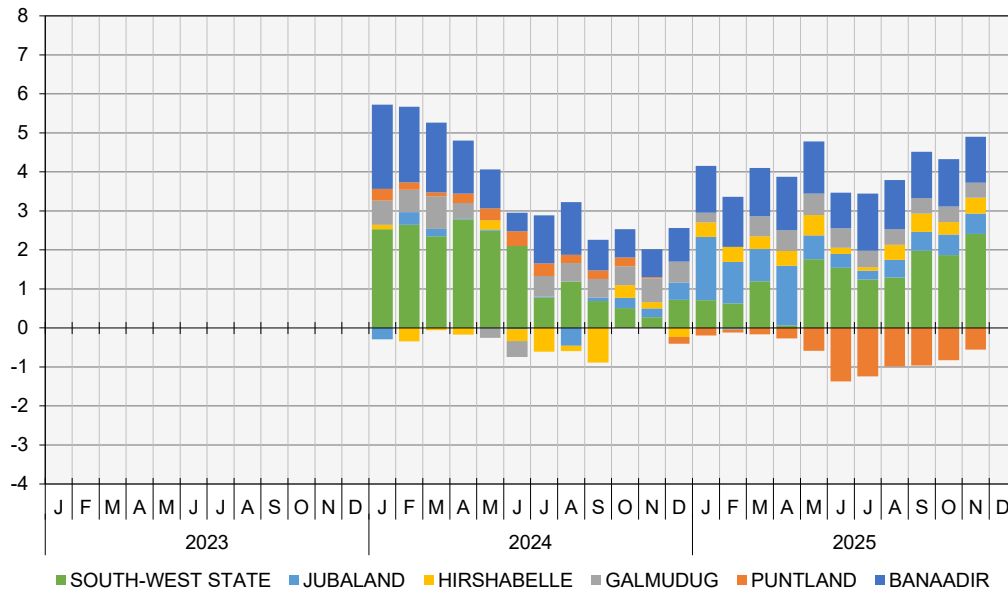
SOMALIA CPI REPORT - STATES COMPARISON

Graph 5. CPI Indices per State (a)

Index Reference Period = 2022



(a) Puntland indices have been estimated

Graph 6. Points contribution (%) to inflation rate (contribution by state) (a)

(a) Puntland indices have been estimated

Summary of annual movement

Over to the twelve months to November 2025, positive state movements came from:

- South-West State (+9.1%): Personal Care, Social Protection and Miscellaneous Goods and Services (+24.08%), and Transport (+20.46%).
- Banaadir (+5.2%): Education Services (+13.77%), Furnishings, household equipment and routine household maintenance (+12.98%) and Restaurant and Accommodation Services (+11.28%) with an offset from Information and Communication (-24.67%).
- Hirshabelle (+6.6%): Personal Care, Social Protection and Miscellaneous Goods and Services (+59.34%), Transport (+57.77%).
- Jubaland (+4.8%): Restaurant and Accommodation (+45.91%), Food and Non-Alcoholic Beverages(+9.62%), with an offset from Transport (-22.4%).
- Galmudug (+4.2%): Health (+10.53%), Personal Care, Social Protection and Miscellaneous Goods and Services (+6.96%).

During the month of November 2025, negative movements came from:

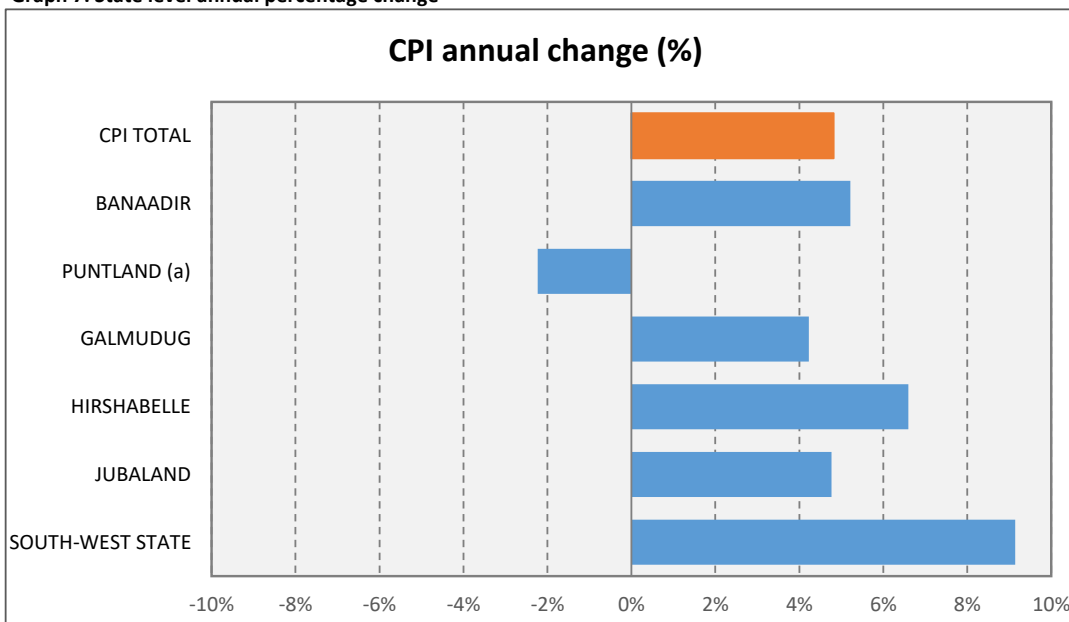
- Puntland (-2.2%): Food and Non-Alcoholic Beverages (-4.5%).

Table 4. State level annual percentage change

State	% -change annual		
	Sep-25	Oct-25	Nov-25
CPI TOTAL	4.1%	3.9%	4.8%
BANAADIR	5.3%	5.4%	5.2%
PUNTLAND (a)	-3.9%	-3.3%	-2.2%
GALMUDUG	4.3%	4.3%	4.2%
HIRSHABELLE	7.6%	5.2%	6.6%
JUBALAND	4.5%	4.8%	4.8%
SOUTH-WEST STATE	7.5%	7.0%	9.1%

(a) Puntland indices have been estimated

Graph 7. State level annual percentage change



(a) Puntland indices have been estimated

Summary of monthly movement

During the month of November 2025, positive movements came from:

- Jubaland (+0.4%): Restaurant and Accommodation (+10.1%).
- Puntland (+0.5%): Restaurants and Accomodation services (+8.3%).
- South-West State (+0.9%): Restaurants and Accomodation Services (+22.0%).
- Banaadir (+0.5%): Housing, Water, Electricity, Gas And Other Fuels (+4.0%).

During the month of November 2025, negative movements came from:

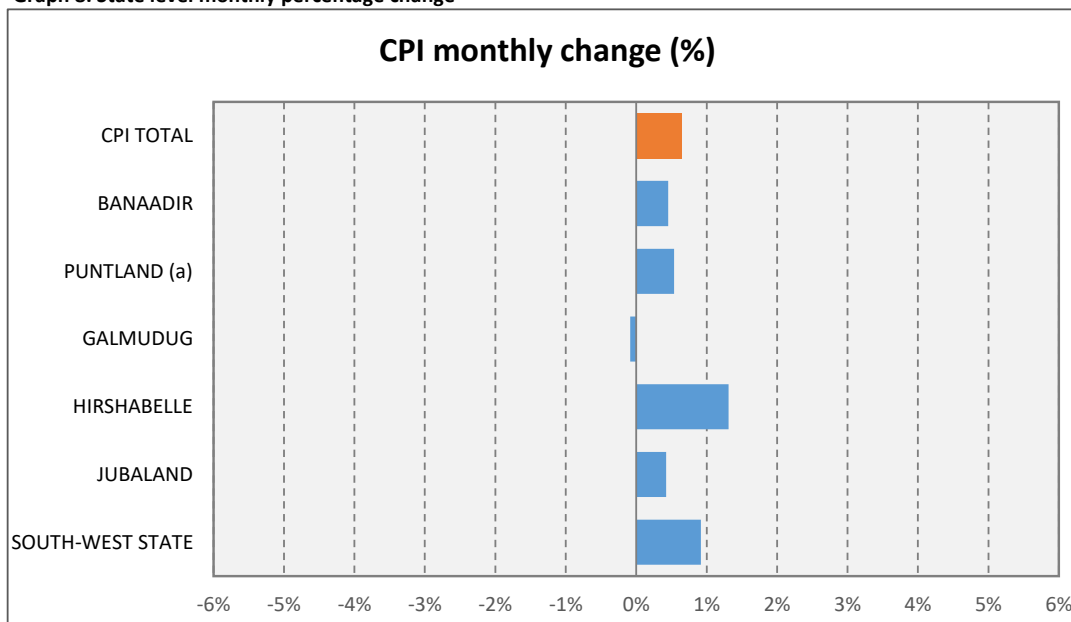
- Galmudug (-0.1%): Restaurants and Accomodation services (-0.5%).

Table 5. State level monthly percentage change

State	% -change monthly		
	Sep-25	Oct-25	Nov-25
CPI TOTAL	0.7%	0.7%	0.6%
BANAADIR	-1.7%	0.3%	0.5%
PUNTLAND (a)	0.4%	1.0%	0.5%
GALMUDUG	0.0%	0.0%	-0.1%
HIRSHABELLE	1.3%	-2.2%	1.3%
JUBALAND	4.1%	3.7%	0.4%
SOUTH-WEST STATE	1.5%	0.7%	0.9%

(a) Puntland indices have been estimated

Graph 8. State level monthly percentage change



(a) Puntland indices have been estimated