



**SOMALI NATIONAL  
BUREAU OF STATISTICS**  
Federal Republic of Somalia

# CONSUMER PRICE INDEX

## SOMALIA



# JANUARY 2026

# Consumer Price Index, Somalia

## Foreword

The Consumer Price Index (CPI) is a key economic indicator that measures the weighted aggregate change in retail prices of goods and services purchased by households in Somalia. It serves as the primary gauge of inflation, enabling policymakers, businesses, and researchers to assess price trends and make informed economic decisions.

Since January 2025, Somalia CPI is released considering new weights derived from 2022 Somalia Integrated Households' Budget Survey (SIHBS), adopting the new households' consumption classification (COICOP 2018), and representing all the Federal Members States. A Methodological Note will be made available on the SNBS web site.

### The CPI is defined as:

"A measure of the weighted average change in retail prices paid by consumers for a fixed basket of goods and services over time." Key uses of CPI include:

- Inflation Measurement: The year-on-year (YoY) inflation rate compares current price levels to the same period in the previous year, serving as a tool for monetary and fiscal policy.
- Economic Decision-Making: Used by government agencies, businesses, and international organizations to adjust wages, contracts, and social benefits.
- Macroeconomic Analysis: Supports the evaluation of purchasing power, cost-of-living adjustments, and economic stability.

### Price Collection Process:

- Frequency: Conducted during the first and third weeks of each month.
- Geographic Coverage: Mogadishu (Capital City), All Federal Member States (FMS).
- Commodity Coverage: 537 items, identified through the 2022 SIHBS, and classified by the Classification of Individual Consumption by Purpose (COICOP) 2018 across 13 divisions.

### **Key statistics**

#### Annual

Over the twelve months to January 2026, the CPI rose 5.5%.

- The most significant price rises over the twelve months were Education Services (+14.3%), Restaurant and Accommodation services (+10.0%), Health (+9.4%), and Food and Non-Alcoholic Beverages (+7.7%)
- Partially offsetting the rise was Transport (-4.7%).
- Price increases were strong for the month of January across the states with South-West State (+7.3%), Galmudug (+6.8%), Hirshabelle (+5.4%), Banaadir (+5.3%), Jubaland (+4.3%), and Puntland (+2.7%).

#### Monthly

The CPI increased by 1.4% during the month of January.

- The most significant price rises this month were Education Services (+6.4%), Recreation, Sports and Culture (+4.7%) and Clothing and Footwear (+2.7%).
- Partially offsetting the rise were Personal Care, Social Protection and Misc (-3.5%) and Health (-2.4%).
- The most significant price rises from Jubaland (+6.1%) offset by South-west State (-0.8%)

**Table 1. CPI, Somalia monthly and annual movements (%)**

	Monthly change (%)	Annual change (%)
Jan-26	1.4%	5.5%
Dec-25	0.9%	5.3%
Nov-25	0.6%	4.8%

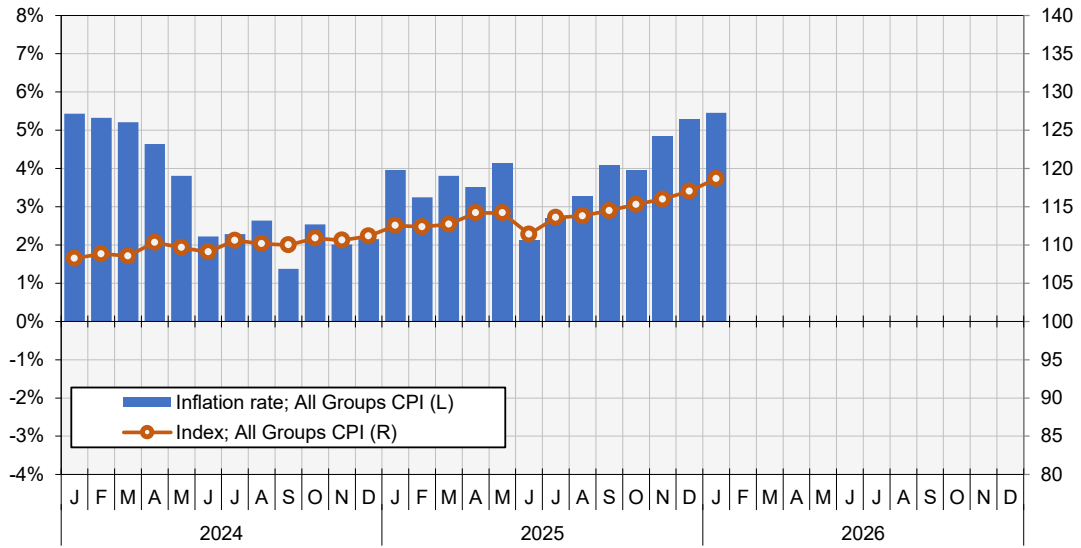
SOMALIA CPI REPORT - ALL DIVISIONS CPI

Graph 1. Inflation rate according to CPI

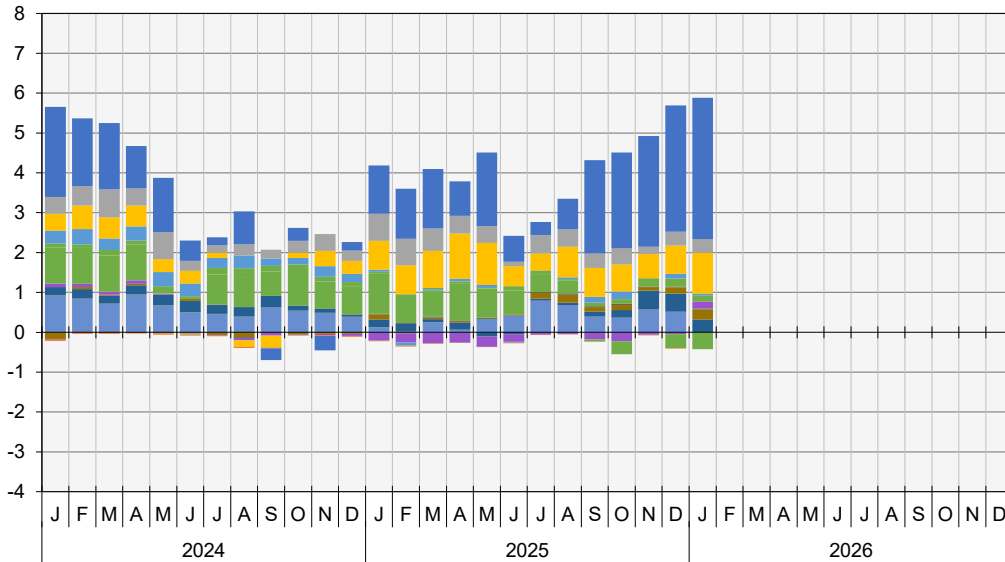
Percent change over twelve months

CPI Index

Index Reference Period = 2022



Graph 2. Points contribution (%) to inflation rate (contribution by division)



- 01 - FOOD AND NON-ALCOHOLIC BEVERAGES
- 02 - ALCOHOLIC BEVERAGES, TOBACCO AND NARCOTICS
- 03 - CLOTHING AND FOOTWEAR
- 04 - HOUSING, WATER, ELECTRICITY, GAS AND OTHER FUELS
- 05 - FURNISHINGS, HOUSEHOLD EQUIPMENT AND ROUTINE HOUSEHOLD MAINTENANCE
- 06 - HEALTH
- 07 - TRANSPORT
- 08 - INFORMATION AND COMMUNICATION
- 09 - RECREATION, SPORT AND CULTURE
- 10 - EDUCATION SERVICES
- 11 - RESTAURANTS AND ACCOMMODATION SERVICES
- 12 - INSURANCE AND FINANCIAL SERVICES
- 13 - PERSONAL CARE, SOCIAL PROTECTION AND MISCELLANEOUS GOODS AND SERVICES

**Summary of annual movement**

Over the twelve months to the January 2026, the CPI rose by 5.5%.

The most significant price rises over the twelve months were:

- Education Services (+14.3%): Education not defined by levels (+16.05%).
- Restaurant and Accommodation Services (+10.0%): Restaurant Services (+12.1%).
- Health (+9.4%): Inpatient Care Services (+15.4%); Medicine and Health Services (+15.3%).
- Food and Non-Alcoholic Beverages (+7.7%): Food (+7.9%); Non-Alcoholic Beverages (+1.4%).

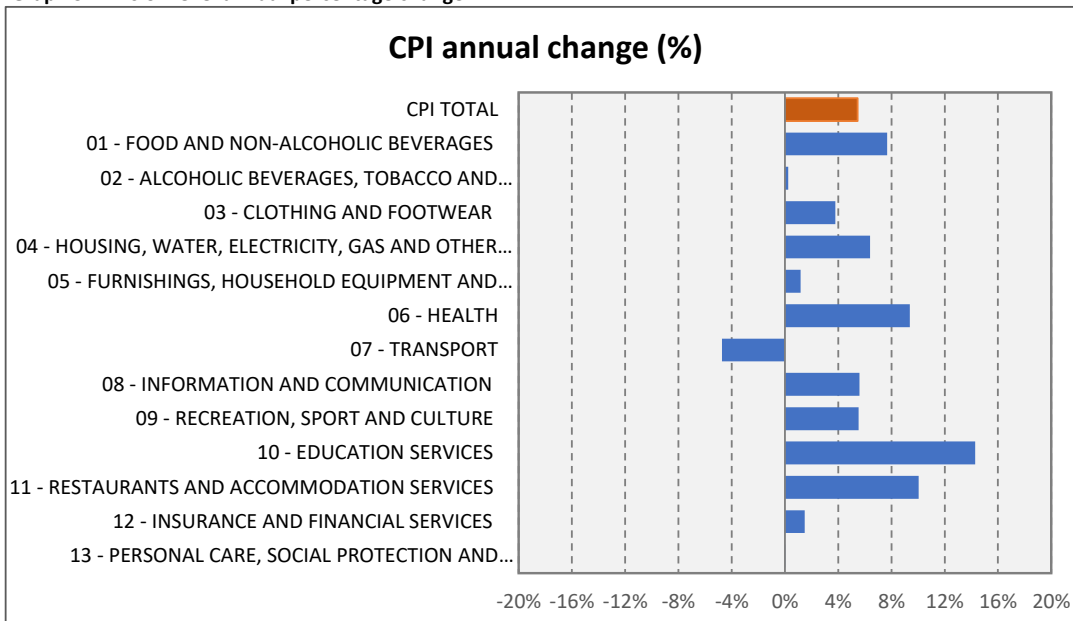
The most significant price falls over the twelve months were:

- Transport (-4.7%): Transport Services of goods (-9.9%); offset by Operation of Personal Transport Equipment (+6.2%).

**Table 2. Division level annual percentage change**

Division	% -change annual		
	Nov-25	Dec-25	Jan-26
CPI TOTAL	4.8%	5.3%	5.5%
01 - FOOD AND NON-ALCOHOLIC BEVERAGES	6.0%	6.8%	7.7%
02 - ALCOHOLIC BEVERAGES, TOBACCO AND NARCOTICS	-2.7%	-2.5%	0.2%
03 - CLOTHING AND FOOTWEAR	2.1%	4.0%	3.8%
04 - HOUSING, WATER, ELECTRICITY, GAS AND OTHER FUELS	3.7%	4.3%	6.4%
05 - FURNISHINGS, HOUSEHOLD EQUIPMENT AND ROUTINE HOUSEHOLD MAI	0.0%	3.1%	1.2%
06 - HEALTH	6.0%	12.5%	9.4%
07 - TRANSPORT	1.3%	-3.9%	-4.7%
08 - INFORMATION AND COMMUNICATION	-1.8%	-1.3%	5.6%
09 - RECREATION, SPORT AND CULTURE	3.5%	2.8%	5.5%
10 - EDUCATION SERVICES	5.1%	8.6%	14.3%
11 - RESTAURANTS AND ACCOMMODATION SERVICES	15.4%	14.9%	10.0%
12 - INSURANCE AND FINANCIAL SERVICES	1.4%	1.6%	1.5%
13 - PERSONAL CARE, SOCIAL PROTECTION AND MISCELLANEOUS GOODS ANI	11.8%	10.9%	0.0%

**Graph 3. Division level annual percentage change**



**Summary of monthly movement**

The CPI increased by 1.4% during the month of January 2026.

The largest positive movements came from:

- Education Services (+6.4%): Secondary education (+13.4%).
- Recreation, Sports and Culture (+4.7%): Other recreational goods(+8.7%)
- Clothing and Footwear (+2.7%): Clothing(+2.3%); Footwear (+4.0%).

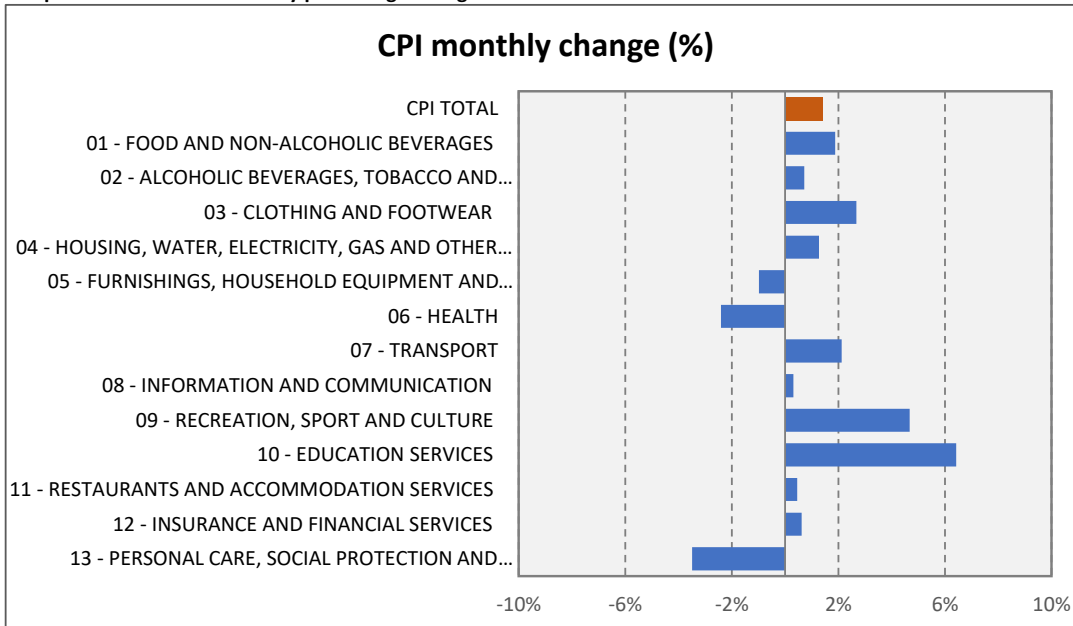
The most significant price falls for the month were:

- Personal Care, Social Protection and Misc (-3.5%): Personal Care (-1.9%).
- Health (-2.4%): Medical products (-3.7%).

**Table 3. Division level monthly percentage change**

Division	% -change monthly		
	Nov-25	Dec-25	Jan-26
CPI TOTAL	0.6%	0.9%	1.4%
01 - FOOD AND NON-ALCOHOLIC BEVERAGES	0.8%	1.8%	1.9%
02 - ALCOHOLIC BEVERAGES, TOBACCO AND NARCOTICS	-2.9%	-1.0%	0.7%
03 - CLOTHING AND FOOTWEAR	-1.2%	1.9%	2.7%
04 - HOUSING, WATER, ELECTRICITY, GAS AND OTHER FUELS	-0.5%	1.3%	1.3%
05 - FURNISHINGS, HOUSEHOLD EQUIPMENT AND ROUTINE HOUSE...	-4.2%	2.1%	-1.0%
06 - HEALTH	-1.2%	6.2%	-2.4%
07 - TRANSPORT	2.9%	-4.9%	2.1%
08 - INFORMATION AND COMMUNICATION	4.8%	-0.3%	0.3%
09 - RECREATION, SPORT AND CULTURE	-0.5%	-0.9%	4.7%
10 - EDUCATION SERVICES	-1.5%	3.7%	6.4%
11 - RESTAURANTS AND ACCOMMODATION SERVICES	8.8%	-1.2%	0.5%
12 - INSURANCE AND FINANCIAL SERVICES	0.5%	0.3%	0.6%
13 - PERSONAL CARE, SOCIAL PROTECTION AND MISCELLANEOUS...	0.0%	-1.8%	-3.5%

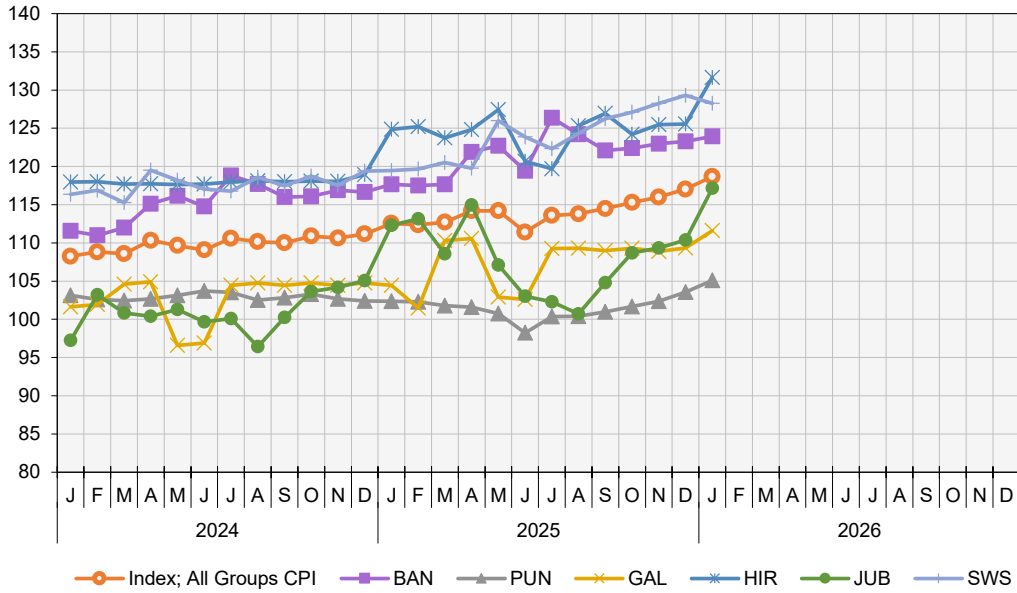
**Graph 4. Division level monthly percentage change**



SOMALIA CPI REPORT - STATES COMPARISON

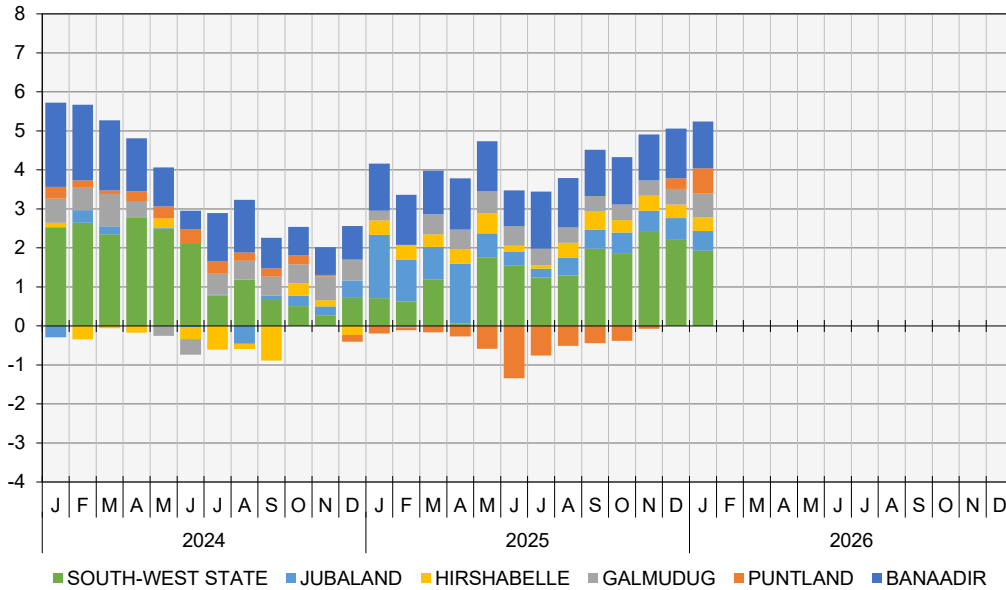
Graph 5. CPI Indices per State (a)

Index Reference Period = 2022



(a) Puntland indices have been estimated

Graph 6. Points contribution (%) to inflation rate (contribution by state) (a)



(a) Puntland indices have been estimated

**Summary of annual movement**

Over to the twelve months to January 2026, positive state movements came from:

- South-West State (+7.3%): Health (+18.4%), Food and Non-Alcoholic Beverages (+13.3%).
- Galmudug (+6.8%): Food and Non-Alcoholic Beverages (+12.0%), Personal Care, Social Protection and Miscellaneous Goods and Services (+9.4%).
- Hirshabelle (+5.4%): Personal Care, Social Protection and Miscellaneous Goods and Services (+69.4%), Transport (+45.7%)
- Banaadir (+5.3%): Education Services (+27.8%), and Recreation, Sports and Culture (+18.9%) with an offset from Personal Care, Social Protection and Miscellaneous Goods and Services(-25.0%).
- Jubaland (+4.3%): Food and Non-Alcoholic Beverages(+5.0%), with an offset from Transport (-1.2%)
- Puntland (+2.7%): Restaurant and Accomodation (+18.7%).

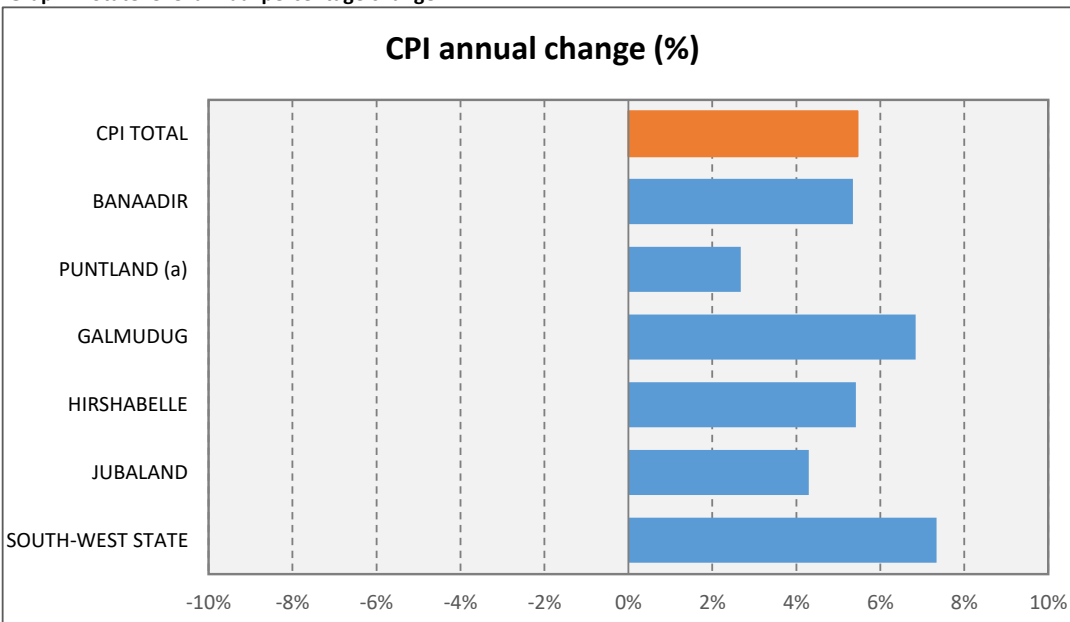
There were no negative movements for the month of January

**Table 4. State level annual percentage change**

State	% -change annual		
	Nov-25	Dec-25	Jan-26
CPI TOTAL	4.8%	5.3%	5.5%
BANAADIR	5.2%	5.7%	5.3%
PUNTLAND (a)	-0.3%	1.1%	2.7%
GALMUDUG	4.3%	4.4%	6.8%
HIRSHABELLE	6.3%	5.6%	5.4%
JUBALAND	5.0%	5.1%	4.3%
SOUTH-WEST STATE	9.1%	8.3%	7.3%

(a) Puntland indices have been estimated

**Graph 7. State level annual percentage change**



(a) Puntland indices have been estimated

**Summary of monthly movement**

During the month of January 2026, positive movements came from:

- Jubaland (+6.1%): Clothing and Footwear (+10.5%).
- Hirshabelle (+4.9%): Transport (+29.2%).
- Galmudug (+2.1%): Food and Non Alcoholic Beverages (+4.9%).
- Puntland (+1.5%): Education Services (+6.0%).
- Banaadir (+0.5%): Recreation, Sports and Culture (+13.9%).

During the month of December 2025, the negative price movement came from:

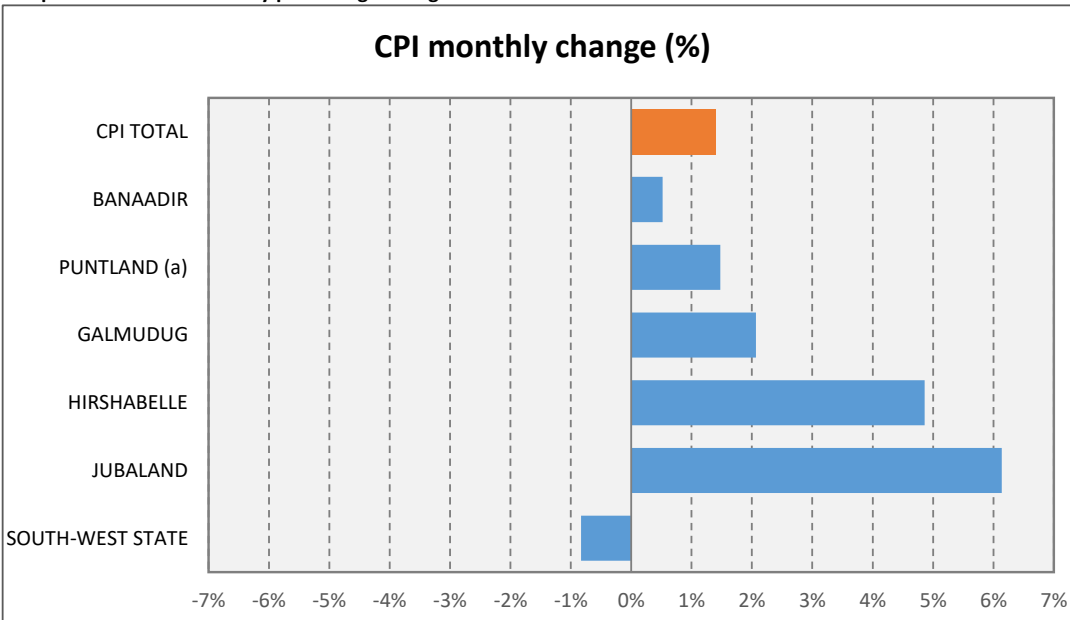
- South-West State (-0.8%): Furnishings, Household Equipment and Routine Household Maintenance (-4.2%).

**Table 5. State level monthly percentage change**

State	% -change monthly		
	Nov-25	Dec-25	Jan-26
CPI TOTAL	0.6%	0.9%	1.4%
BANAADIR	0.5%	0.3%	0.5%
PUNTLAND (a)	0.7%	1.2%	1.5%
GALMUDUG	-0.4%	0.4%	2.1%
HIRSHABELLE	1.0%	0.1%	4.9%
JUBALAND	0.6%	0.9%	6.1%
SOUTH-WEST STATE	0.9%	0.8%	-0.8%

(a) Puntland indices have been estimated

**Graph 8. State level monthly percentage change**



(a) Puntland indices have been estimated