



**SOMALI NATIONAL
BUREAU OF STATISTICS**
Federal Republic of Somalia

CONSUMER PRICE INDEX

SOMALIA



MARCH 2026

Consumer Price Index, Somalia

Foreword

The Consumer Price Index (CPI) is a key economic indicator that measures the weighted aggregate change in retail prices of goods and services purchased by households in Somalia. It serves as the primary gauge of inflation, enabling policymakers, businesses, and researchers to assess price trends and make informed economic decisions.

Since January 2025, Somalia CPI is released considering new weights derived from 2022 Somalia Integrated Households' Budget Survey (SIHBS), adopting the new households' consumption classification (COICOP 2018), and representing all the Federal Members States. A Methodological Note will be made available on the SNBS web site.

The CPI is defined as:

"A measure of the weighted average change in retail prices paid by consumers for a fixed basket of goods and services over time." Key uses of CPI include:

- Inflation Measurement: The year-on-year (YoY) inflation rate compares current price levels to the same period in the previous year, serving as a tool for monetary and fiscal policy.
- Economic Decision-Making: Used by government agencies, businesses, and international organizations to adjust wages, contracts, and social benefits.
- Macroeconomic Analysis: Supports the evaluation of purchasing power, cost-of-living adjustments, and economic stability.

Price Collection Process:

- Frequency: Conducted during the first and third weeks of each month.
- Geographic Coverage: Mogadishu (Capital City), All Federal Member States (FMS).
- Commodity Coverage: 537 items, identified through the 2022 SIHBS, and classified by the Classification of Individual Consumption by Purpose (COICOP) 2018 across 13 divisions.

Key statistics

"Annual (March 2026)

Over the twelve months to March 2026, the CPI rose 7.8%. The most significant price rises over the twelve months were:

- Restaurants and Accommodation Services (+20.9%): Restaurant Services (+14.3%).
- Education Services (+14.9%): Early childhood and primary education (+16.8%).
- Health (+13.7%): Inpatient Care Services (+22.1%), Medicine and Health Services (+18.7%).
- Housing, Water, Electricity, Gas and Other Fuels (+8.9%).
- Food and Non-Alcoholic Beverages (+8.0%).
- Transport (+4.7%).

There were no negative movements during March 2026. State-level increases (highest to lowest):

- South-West State (+9.3%), Banadir (+8.9%), Galmudug (+8.8%), Jubaland (+7.3%), Puntland (+6.5%), Hirshabelle (+6.1%)

"Monthly (March 2026)

The CPI increased by 2.4% in March 2026. The most significant price rises this month were:

- Transport (+7.6%): Passenger transport services rebounded strongly.
- Housing, Water, Electricity, Gas and Other Fuels (+5.8%).
- Restaurants and Accommodation Services (+2.6%): Accommodation Services (+4.0%), Restaurant Services (+14.3%).
- Food and Non-Alcoholic Beverages (+0.6%).

There were no negative movements during March 2026. State-level increases (highest to lowest):

- Galmudug (+9.9%), Puntland (+3.0%), South-West State (+2.9%), Banadir (+2.8%)
- Hirshabelle (-0.6%) – overall decline, but positive contributions from Housing (+5.8%) and Transport (+7.6%).
- Jubaland (-2.2%) – overall decline, but positive contributions from Health (+3.1%), Housing (+5.8%), and Transport (+7.6%).

Table 1. CPI, Somalia monthly and annual movements (%)

	Monthly change (%)	Annual change (%)
Mar-26	2.4%	7.8%
Feb-26	0.0%	5.6%
Jan-26	1.4%	5.4%

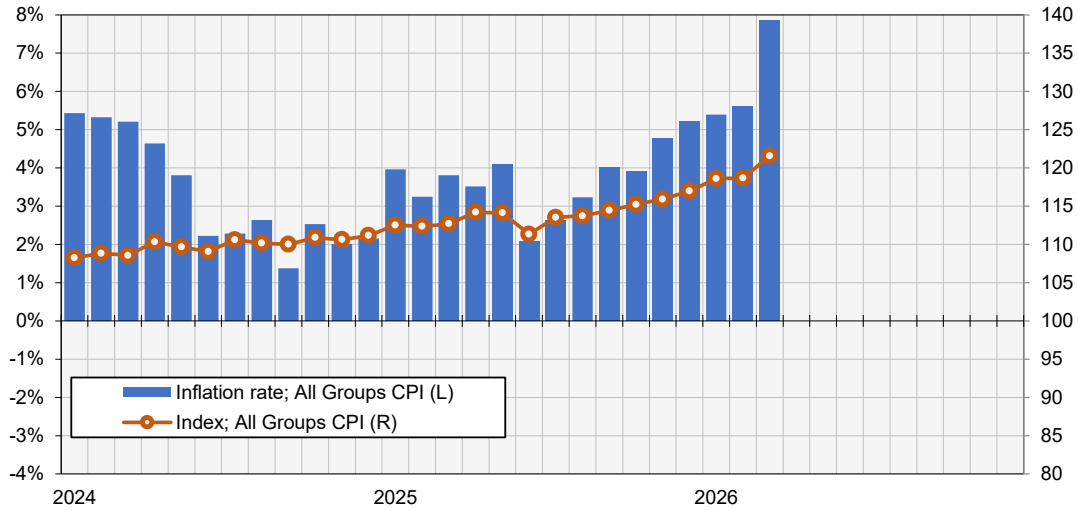
SOMALIA CPI REPORT - ALL DIVISIONS CPI

Graph 1. Inflation rate according to CPI

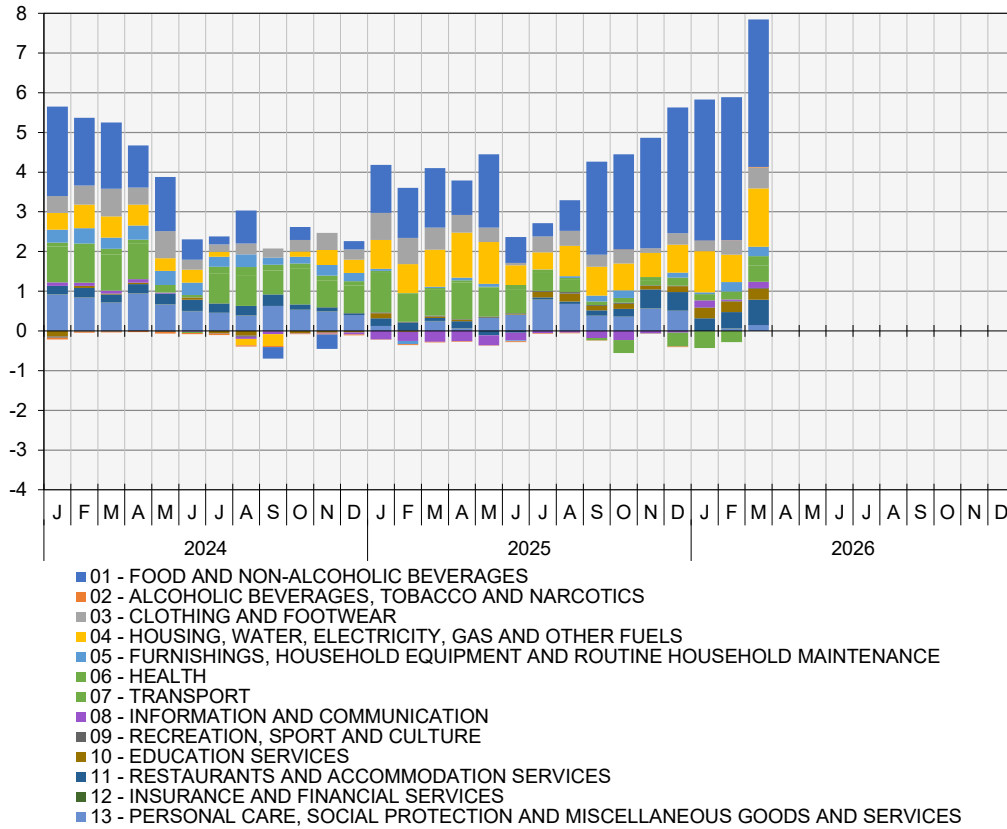
Percent change over twelve months

CPI Index

Index Reference Period = 2022



Graph 2. Points contribution (%) to inflation rate (contribution by division)



Summary of annual movement

Over the twelve months to March 2026, the CPI rose 7.8%.

The most significant price rises over the twelve months were:

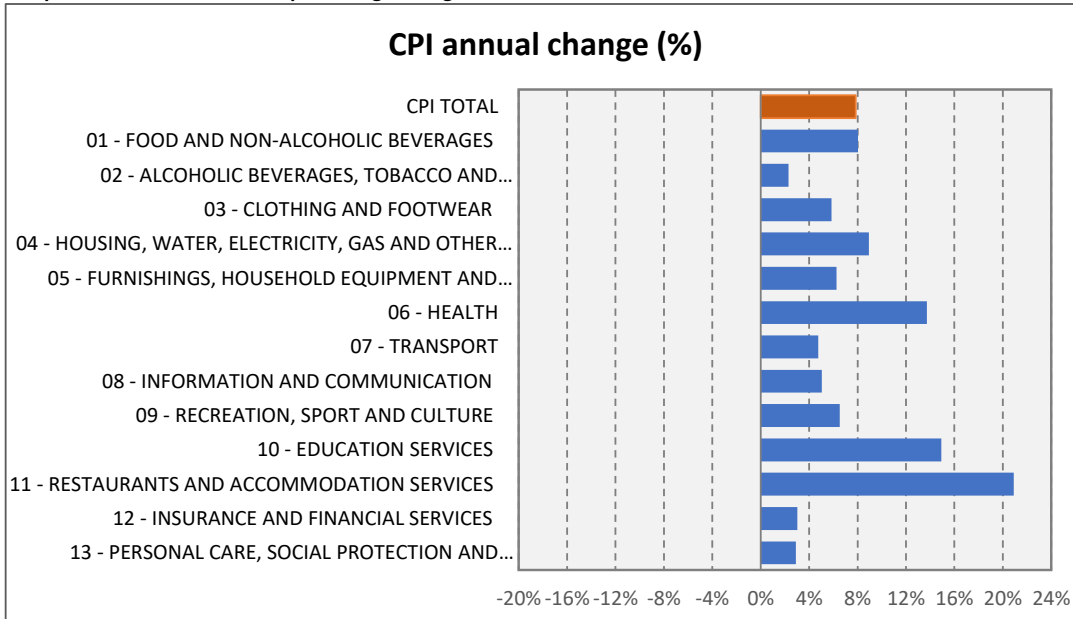
- Restaurants and Accommodation Services (+20.9%): driven by Restaurant Services (+14.3%).
- Education Services (+14.9%): led by Early childhood and primary education (+16.8%).
- Health (+13.7%): with Inpatient Care Services (+22.1%) and Medicine and Health Services (+18.7%) as the main drivers.
- Housing, Water, Electricity, Gas and Other Fuels (+8.9%): driven by Electricity (+11.1%) and Rent (+9.2%).
- Food and Non-Alcoholic Beverages (+8.0%): driven by Cereals (+18.5%), Bread & Bakery (+34.4%), and Meat (+14.3%).
- Transport (+4.7%): mainly from Passenger transport services (+7.6%) and Fuel (+5.2%).

There were no negative movements during March 2026.

Table 2. Division level annual percentage change

Division	% -change annual		
	Jan-26	Feb-26	Mar-26
CPI TOTAL	5.4%	5.6%	7.8%
01 - FOOD AND NON-ALCOHOLIC BEVERAGES	7.7%	7.8%	8.0%
02 - ALCOHOLIC BEVERAGES, TOBACCO AND NARCOTICS	0.2%	1.3%	2.3%
03 - CLOTHING AND FOOTWEAR	3.0%	4.0%	5.8%
04 - HOUSING, WATER, ELECTRICITY, GAS AND OTHER FUELS	6.4%	4.2%	8.9%
05 - FURNISHINGS, HOUSEHOLD EQUIPMENT AND ROUTINE HOUSEHOLD MAI	1.2%	6.1%	6.3%
06 - HEALTH	9.4%	12.2%	13.7%
07 - TRANSPORT	-4.7%	-3.2%	4.7%
08 - INFORMATION AND COMMUNICATION	5.6%	1.2%	5.1%
09 - RECREATION, SPORT AND CULTURE	5.5%	4.3%	6.5%
10 - EDUCATION SERVICES	14.3%	14.8%	14.9%
11 - RESTAURANTS AND ACCOMMODATION SERVICES	10.0%	12.8%	20.9%
12 - INSURANCE AND FINANCIAL SERVICES	1.5%	1.6%	3.0%
13 - PERSONAL CARE, SOCIAL PROTECTION AND MISCELLANEOUS GOODS ANI	-0.1%	1.2%	2.9%

Graph 3. Division level annual percentage change



Summary of monthly movement

The CPI increased by 2.4% in March 2026.

The most significant price rises this month were:

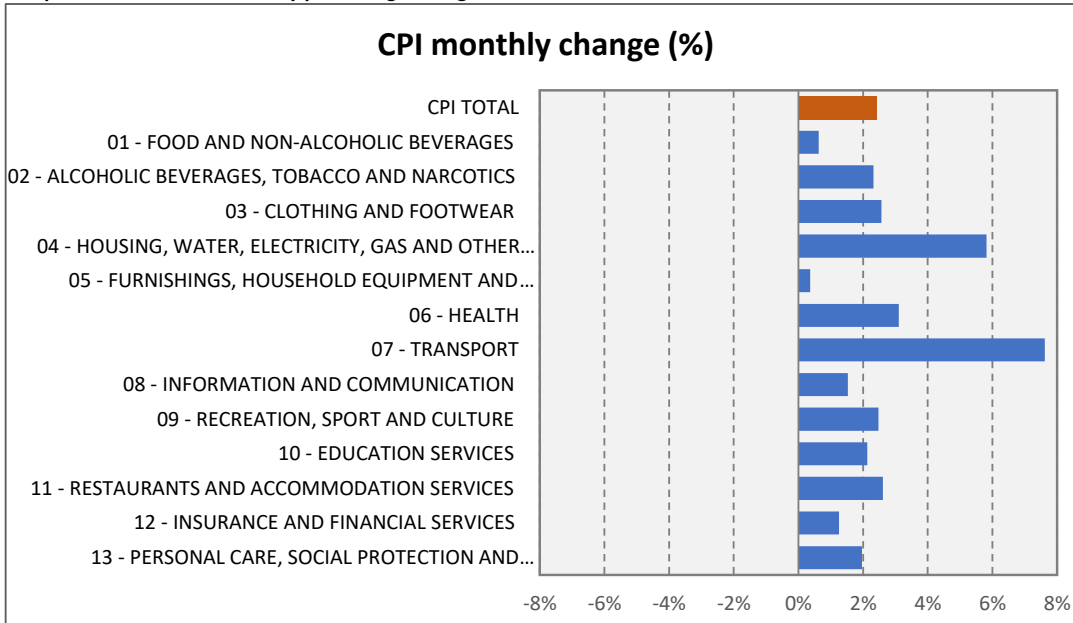
- Transport (+7.6%): driven by Passenger transport services (+7.6%) and Fuel (+6.8%).
- Housing, Water, Electricity, Gas and Other Fuels (+5.8%): led by Electricity (+6.2%) and Rent (+5.5%).
- Restaurants and Accommodation Services (+2.6%): Accommodation Services (+4.0%), Restaurant Services (+14.3%).
- Food and Non-Alcoholic Beverages (+0.6%): with notable increases in Cereals (+4.3%), Bread & Bakery (+13.4%), and Eggs (+10.6%).

There were no negative movements during March 2026.

Table 3. Division level monthly percentage change

Division	% -change monthly		
	Jan-26	Feb-26	Mar-26
CPI TOTAL	1.4%	0.0%	2.4%
01 - FOOD AND NON-ALCOHOLIC BEVERAGES	1.9%	0.0%	0.6%
02 - ALCOHOLIC BEVERAGES, TOBACCO AND NARCOTICS	0.7%	0.6%	2.3%
03 - CLOTHING AND FOOTWEAR	2.6%	1.6%	2.6%
04 - HOUSING, WATER, ELECTRICITY, GAS AND OTHER FUELS	1.3%	-1.3%	5.8%
05 - FURNISHINGS, HOUSEHOLD EQUIPMENT AND ROUTINE HOUSE...	-1.0%	4.9%	0.4%
06 - HEALTH	-2.4%	0.8%	3.1%
07 - TRANSPORT	2.1%	-1.5%	7.6%
08 - INFORMATION AND COMMUNICATION	0.3%	-3.7%	1.5%
09 - RECREATION, SPORT AND CULTURE	4.7%	0.4%	2.5%
10 - EDUCATION SERVICES	6.4%	1.1%	2.1%
11 - RESTAURANTS AND ACCOMMODATION SERVICES	0.5%	3.4%	2.6%
12 - INSURANCE AND FINANCIAL SERVICES	0.6%	0.1%	1.3%
13 - PERSONAL CARE, SOCIAL PROTECTION AND MISCELLANEOUS...	-3.6%	1.2%	2.0%

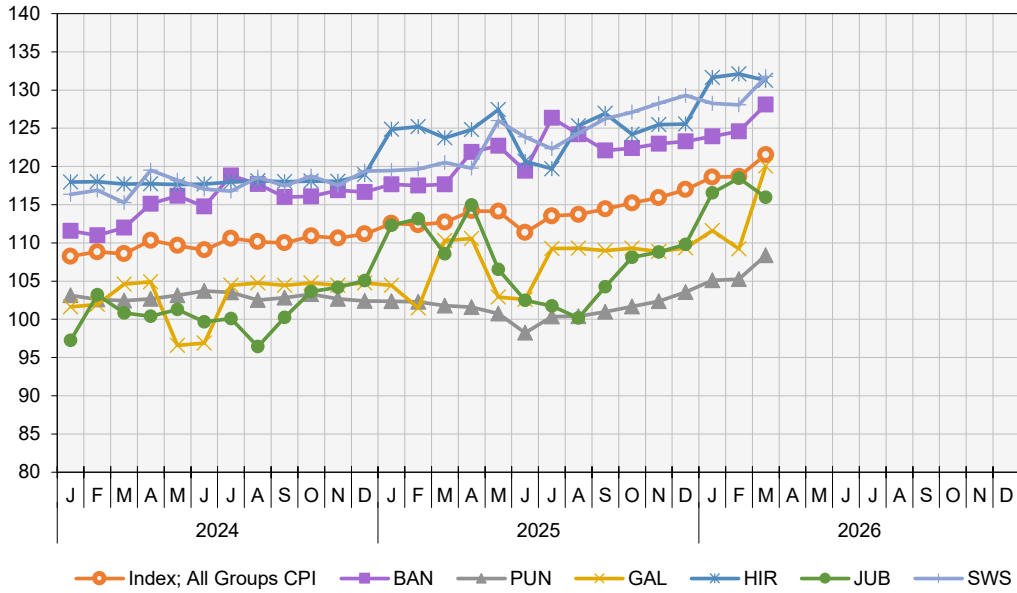
Graph 4. Division level monthly percentage change



SOMALIA CPI REPORT - STATES COMPARISON

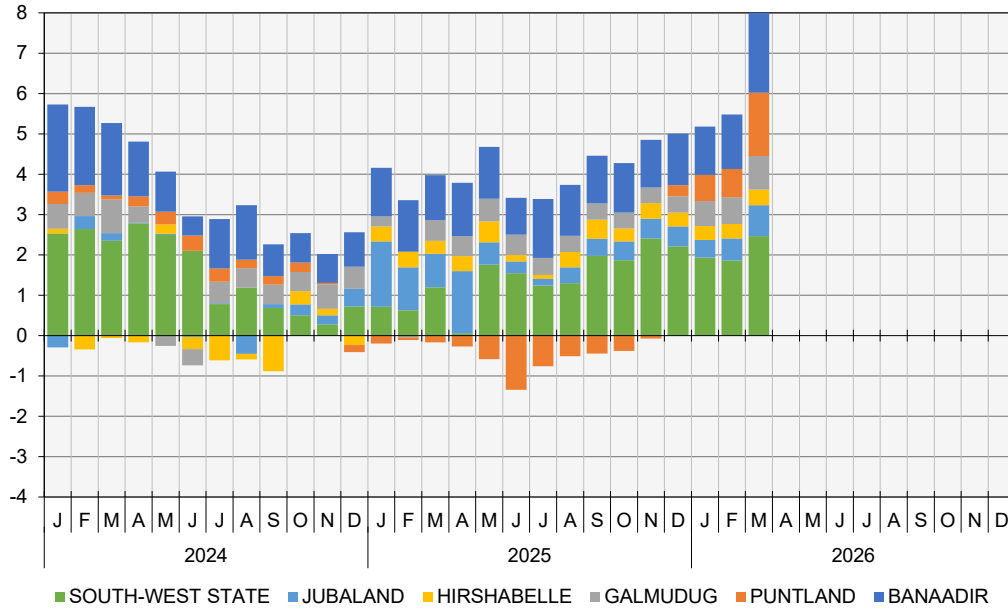
Graph 5. CPI Indices per State (a)

Index Reference Period = 2022



(a) Puntland indices have been estimated

Graph 6. Points contribution (%) to inflation rate (contribution by state) (a)



(a) Puntland indices have been estimated

Summary of annual movement

Over the twelve months to March 2026, positive state movements came from:

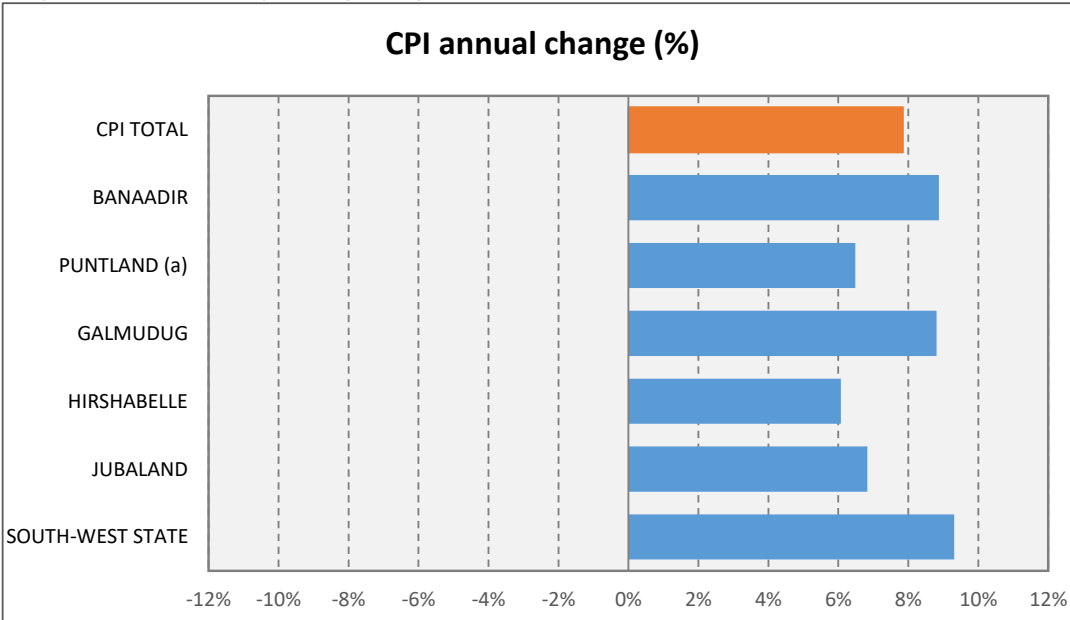
- South-West State (+9.3%) Food and Non-Alcoholic Beverages (+8.0%) – cereals, bread & bakery, meat. Housing (+8.9%) – electricity (+11.1%), rent (+9.2%). Transport (+4.7%) – passenger services (+7.6%), fuel (+5.2%).
- Banadir (+8.9%) Restaurants and Accommodation Services (+20.9%) – restaurant services (+14.3%). Housing (+8.9%) – electricity, rent. Transport (+4.7%) – passenger services rebound.
- Galmudug (+8.8%) Food and Non-Alcoholic Beverages (+8.0%) – cereals (+18.5%), bakery (+34.4%), meat (+14.3%). Health (+13.7%) – inpatient care (+22.1%), medicine (+18.7%). Housing (+8.9%) – electricity, rent. Transport (+4.7%) – passenger services, fuel.
- Jubaland (+7.3%) Food (+8.0%) – cereals, meat. Housing (+8.9%) – electricity, rent. Transport (+4.7%) – passenger services rebound.
- Puntland (+6.5%) Restaurants and Accommodation Services (+20.9%) – restaurant services. Housing (+8.9%) – electricity, rent. Transport (+4.7%) – passenger services, fuel.
- Hirshabelle (+6.1%) Transport (+4.7%) – passenger services, fuel. Housing (+8.9%) – electricity, rent. During the month of March 2026, there were no negative movements.

Table 4. State level annual percentage change

State	% -change annual		
	Jan-26	Feb-26	Mar-26
CPI TOTAL	5.4%	5.6%	7.8%
BANAADIR	5.3%	6.0%	8.9%
PUNTLAND (a)	2.7%	2.9%	6.5%
GALMUDUG	6.9%	7.6%	8.8%
HIRSHABELLE	5.4%	5.5%	6.1%
JUBALAND	3.8%	4.7%	6.8%
SOUTH-WEST STATE	7.3%	7.0%	9.3%

(a) Puntland indices have been estimated

Graph 7. State level annual percentage change



(a) Puntland indices have been estimated

Summary of monthly movement

During the month of March 2026, positive movements came from:

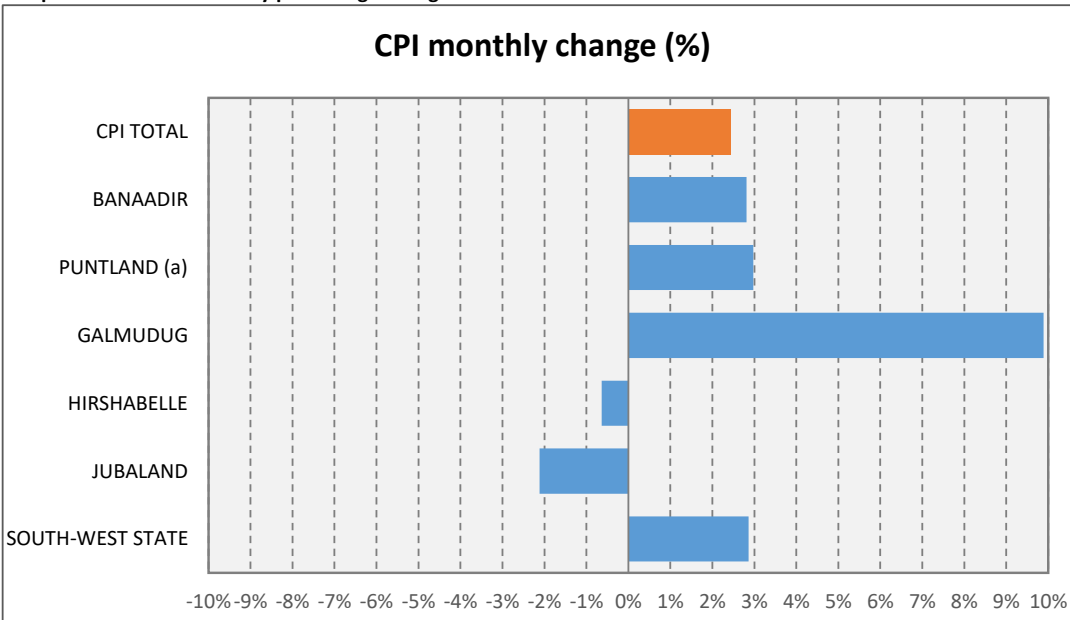
- Galmudug (+9.9%): Food and Non-Alcoholic Beverages (+0.6%) – cereals, bread & bakery, meat. Housing, Water, Electricity, Gas and Other Fuels (+5.8%) – electricity (+6.2%), rent (+5.5%).Transport (+7.6%) – passenger services rebound, fuel (+6.8%).
- Puntland (+3.0%) Housing (+5.8%) – electricity, rent. Transport (+7.6%) – passenger services, fuel.
- South-West State (+2.9%) Food (+0.6%) – cereals, bakery. Housing (+5.8%) – electricity, rent. Transport (+7.6%) – passenger services, fuel.
- Banadir (+2.8%) Housing (+5.8%) – electricity, rent. Transport (+7.6%) – passenger services rebound.
- Hirshabelle (-0.6%) Overall decline, but positive contributions from: Housing (+5.8%) – electricity, rent. Transport (+7.6%) – passenger services, fuel.
- Jubaland (-2.2%) Overall decline, but positive contributions from: Health (+3.1%) – inpatient care, medicine. Housing (+5.8%) – electricity, rent. Transport (+7.6%) – passenger services rebound.☒

Table 5. State level monthly percentage change

State	% -change monthly		
	Jan-26	Feb-26	Mar-26
CPI TOTAL	1.4%	0.0%	2.4%
BANAADIR	0.5%	0.5%	2.8%
PUNTLAND (a)	1.5%	0.1%	3.0%
GALMUDUG	2.1%	-2.1%	9.9%
HIRSHABELLE	4.9%	0.4%	-0.6%
JUBALAND	6.1%	1.7%	-2.1%
SOUTH-WEST STATE	-0.8%	-0.1%	2.9%

(a) Puntland indices have been estimated

Graph 8. State level monthly percentage change



(a) Puntland indices have been estimated