



**SOMALI NATIONAL  
BUREAU OF STATISTICS**  
Federal Republic of Somalia

# TUSAHA SICIRKA BADEECADAHA SOOMALIYA



## LUULIYO 2025

# Tusaha Sicirka Badeecadaha, Soomaaliya

## Hordhac

- Tusaha Sicirka Badeecadaha (TSB) waa tilmaame dhaqaale oo muhiim ah oo hal beeg u ah isbeddelka guud ee isugeynta boqoleys ee sicirka tafaariiqda ee badeecadaha iyo adeegyada ay iibsadaan qoysaska Soomaaliyeed. Waxay u adeegtaa sida qiyaasta asaasiga ah ee sicir bararka, ayada oo awood u siineysa siyaasad-dejiyeyaasha, ganacsiyada, iyo cilmi-baarayaasha si ay u qiimeeyaan isbeddellada ascaarta si ay u sameeyaan go'aamo dhaqaale oo maan-gal ah. Tan iyo Janaayo 2025, TSB-da Soomaaliya ayaa la sii daayay iyadoo la tixgelinayo hal beeg cusub oo laga soo qaatay Sahan Kharashaadka Qoysaska Soomaaliya ee 2022 (SIHBS), iyadoo lagu lifaaqaayo kalasaarida cusub ee kharashka qoysaska (COICOP 2018), kana turjumeysa dhammaan Doladaha Xubnaha ka ah Dowlada Federaalka ah ee Soomaaliya. qoraal ku saabsan habraaca ayaa lagu soo bandhigi doonaa Bogga Internet-ka ee SNBS.

### Tusaha Sicirka Badeecadaha (TSB) waxaa lagu qeexay sidan:

"Cabbirka celceliska Hal beega isbedelka qiimaha tafaariiqda ee ay macaamiishu ku bixiyeen agabka iyo adeegyada mudo cayiman." meelaha ugu muhimsan ee TSB-da loo adeegsan karo waxaa ka mid ah:

- Cabirka Sicir-bararka: Sicir-bararka sannadlaha ah (YoY) wuxuu isbarbar dhigayaa qiimaha hadda ee sanadkan iyo isla qiimahaas sannadkii hore, isagoo u adeegaya sida agab loogu talagalay siyaasadda lacagta iyo maaliyadda.
- Go'aan-qaadasho Dhaqaale: Waxaa isticmaala hay'adaha dawladda, ganacsiyada, iyo hay'adaha caalamiga ah si ay ugu jaan gooyaan mushaharka, qandaraasyada, iyo ka faa'iidooyinka bulshada.
- Falanqeynta Dhaqaalaha Balaaran: Waxay taageertaa qiimeynta awoodda wax iibsiga, hagaajinta qiimaha kharashka-nololeed, iyo xasiloona dhaqaalaha.

### Hab Ururinta Qiimaha:

- Si joogta ah: Waxa loo sameeyaa toddobaadka ugu horreeya iyo kan saddexaad ee bil kasta.
- Deeganada laga soo uruuriyo: Muqdisho (Caasimadda), Dhammaan Dawladaha Xubinta ka ah Dawladda Federaalka (FMS).
- Ashyaada ama badeecadaha: 537 shey, oo laga soo xulay Sahankii 2022 SIHBS, oo lagu kala saaray nidaamka Kala-soocidda Qaybaha Isticmaalka Qofka (COICOP) 2018 oo ka kooban 13 qaybood

### Istaatistikada Muhiimka ah

#### Sannadle

Laba iyo tobankii bilood ee la soo dhaafay ilaa luulyo2025, TSB-da waxay sare u kacday 2.7%.

- Qiimaha kororka ugu weyn ee laba iyo tobankii biloodayaa ahaa Daryeelka Shakhsi ahaaneed, Ilaalinta Bulshada iyo Alaabaha iyo Adeegyada yar yar (+16.7%), waxbadarasha (+8.1%), Caymis iyo Adeegyo Maaliyadeed (+7.5%), Madadaalo, Ciyaaro, iyo Dhaqan (+5.5%) , Dharka iyo Kabaha (+5.4%), Gaadiid ka (+5.0%).
- Qaybaha hoos u dhacay ayaa ahaa Warfaafinta iyo Isgaarsiinta (-1.8%) Tubaakada iyo Qaadka (-2.0%).
- Qiimaha kororka ayaa ahaa mid xooggan bishii Luulyo guud ahaan dowlad goboleedyada Banaadir (+6.4%), Koonfur-Galbeed (+4.7%), Galmudug (+4.6%), Jubaland (+2.2%), and Hirshabeelle (+1.1%).
- hoos dhac yar oo ka yimid Puntland (-5.0%) ayaa yeeshay saa Maajon hoos u dhac weyn sababo la xariira amiisaankiis

#### Bille

Tusaha Sicirka Badeecadaha (TSB) waxuu sare u kacay 2.1% bishan.

- Qiimaha kororka ugu weyn ee bishan ayaa ahaa Caymis iyo Adeegyo Maaliyadeed (+7.5%)Gaadiid ka (+7.0%). , Ilaalinta Bulshada iyo Alaabaha iyo Adeegyada yar yar (+5.0%), iyo Warfaafinta iyo Isgaarsiinta (+4.8%).
- Qayba hoos u dhacay ayaa ahaa Madadaalada, Ciyaaraha iyo Dhaqanka (-3.0%) .
- Qiima kororka ugu badan ee dowlad goboleedyada wuxuu ka yimid Galmudug (+6.9%) Iyadoo hoos u dhac weyn uu ka yimid Koonfur-Galbeed (-1.2%).

#### **Shaxda 1. TSB, Dhaqdhaqaaqyada Sanadlaha & Billaha ah ee Soomaaliyeed (%)**

	Isbedalka Billah ah (%)	Isbedalka Sanadlah ah (%)
Luulyo-25	2.1%	2.7%
Juun-25	-2.6%	2.0%
Maajo-25	0.0%	4.2%

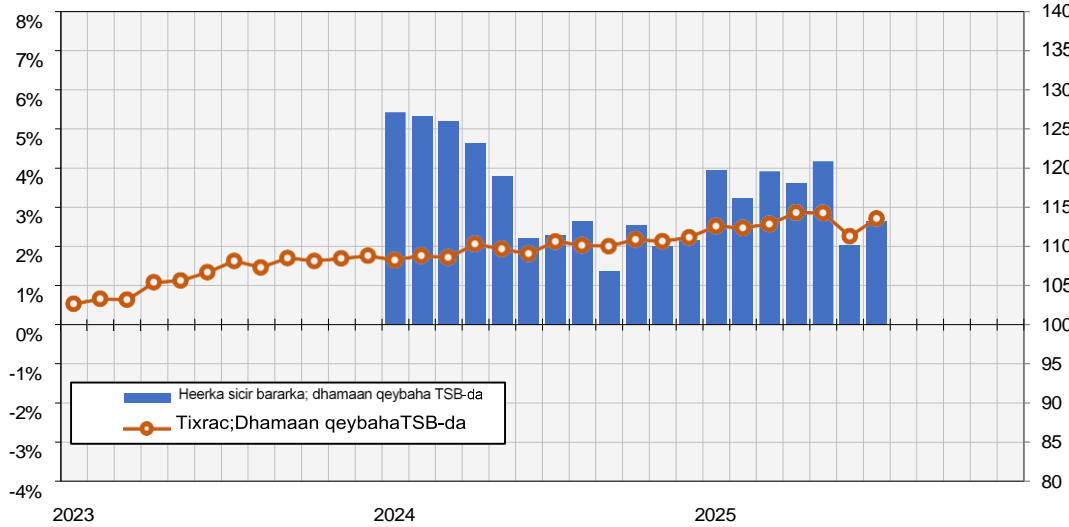
Warbixinta TSB-da ee Soomaaliyeed – Dhamaan qeybaha TSB-da

Jaantuska 1. heerka sicir bararka marka loo eego TSB-da

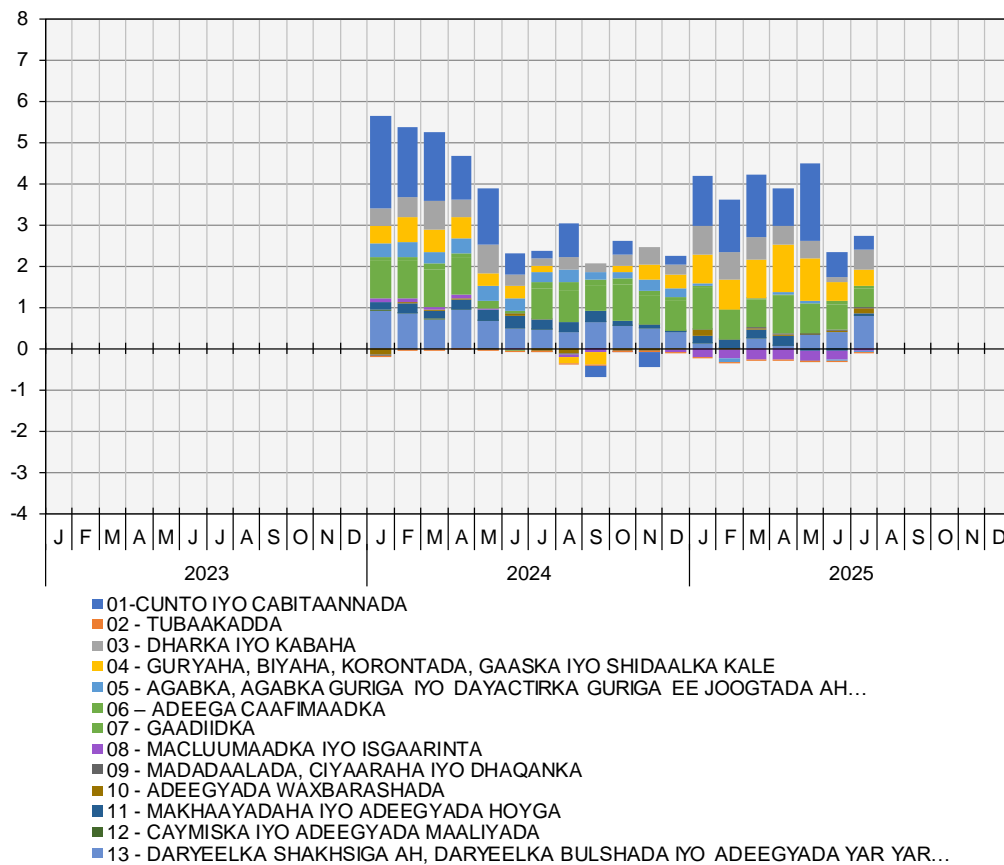
Isbadalka boqoleyda 12 bilood

Tixrac TSB-da

Mudada tixraca = 2022



Jaantuska 1. Qeybaha ka qeybqaata (%) heerka sicir bararka (heerka qeybinta)



**War bixin Kooban ee Dhaqdhaqaaqa Sannadlaha ah**

- Muddo 12 bilood ah ilaa maajo 2025, TSB-da ayaa sare u kacay 2.7%.

Qiimo kororka ugu weyn ee Laba iyo tobankii bilood ee la soo dhaafay ayaa ahaa:

- Daryeelka Shakhsi ahaaneed, Ilaalinta Bulshada iyo Alaabooyinka iyo Adeegyada yar yar (+16.7%),daryeelkashaqsiga (+18.32%),waxyabaha kale shaqsiga (+7.45%).
- Adeega waxbarashada (+8.1%): Waxbarashada Hore ee Caruurta iyo Tan Dugsiga Hoose (+8.89%), Waxbarasho aan lagu qeexin heer (+10.42%).
- Caymis iyo Adeegyo Maaliyadeed (+6.5%): Adeegyada Caymiska(+6.93%); Adeegyada Maaliyadeed (+6.43%)
- Madadaalo, Ciyaaro, iyo Dhaqan (+5.6%), Alaabta Madadaalada ee Waarta (+9.41%).
- Dhar iyo Kabo (+5.4%): Dharka (+3.96%); Kabaha (+10.93%).
- Gaadiidka (+5.0%): Adeegyada Rakaabka Gaadiidka (+5.47%).

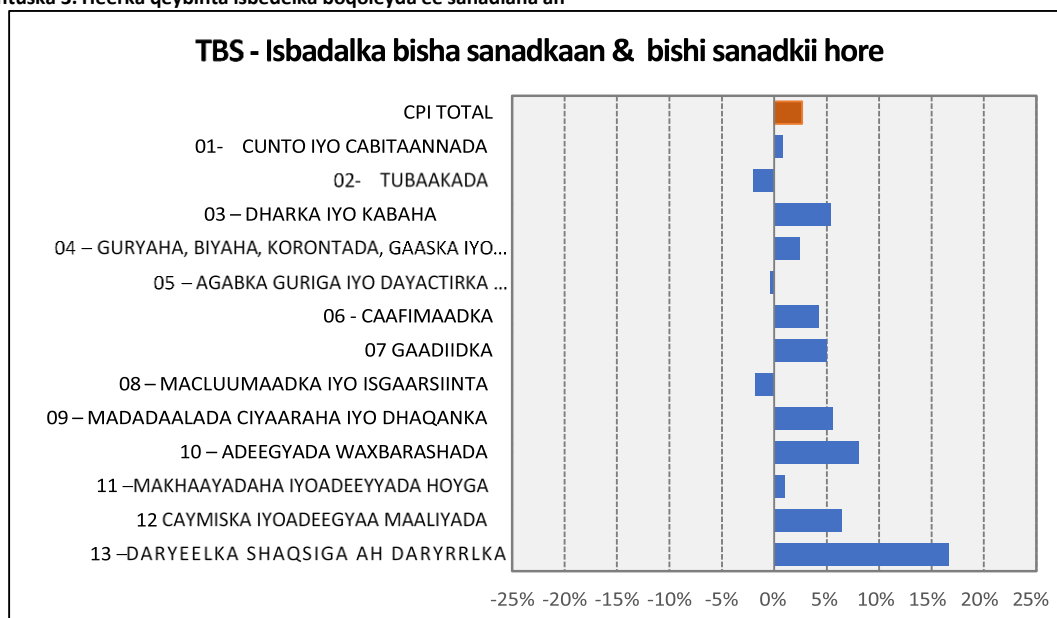
Hoos u dhaca ugu weyn Laba iyo tobankii bilood ee la soo dhaafay ayaa ahaa:

- Macluumaadka iyo Isgaarsiinta (-1.8%): Macluumaadka iyo Isgaarsiinta -Qalabka (-9.19%).
- Tubaakada iyo Qaadka (-2.0%): Qaadka (-2.42) tubaakada (+0.19%).

**Shaxda 2. boqolkiiba isbeddelka heerka qaybta sannadlaha ah**

Qaybinta	% - isbeddel sannadle ah		
	Maajo -25	Juun-25	Luulyo-25
WADARTA GUUD EE CPI	4.2%	2.0%	<b>2.7%</b>
01-CUNNO IYO CABBITAANNADA AAN KHAMRIGA AHAYN	4.0%	1.4%	<b>0.8%</b>
02 - CABBITAANNADA KHAMRIGA, TUBAAKADA IYO MAANDORIYAHA	-1.9%	-4.0%	<b>-2.0%</b>
03 - DHARKA IYO KABAHA	4.8%	1.3%	<b>5.4%</b>
04 - GURYAHA, BIYAHA, KORONTADA, GAASKA IYO SHIDAALKA KALE	6.4%	2.8%	<b>2.5%</b>
05 - ALAABTA, QALABKA GURIGA IYO GURIGA CAADIGA AH EE MAI	1.5%	-1.1%	<b>-0.3%</b>
06 - CAAFIMAAD	0.0%	5.3%	<b>4.2%</b>
07 - GAADIIDKA	8.9%	7.3%	<b>5.0%</b>
08 - MACLUUMAADKA IYO ISGAARINTA	-7.3%	-5.6%	<b>-1.8%</b>
09 - MADADAALADA, CIYAARAH IYO DHAQANKA	7.6%	5.2%	<b>5.6%</b>
10 - ADEEGYADA WAXBARASHADA	0.4%	0.7%	<b>8.1%</b>
11 - MAKHAAYADAHA IYO ADEEGYADA HOYGA	-1.8%	-2.1%	<b>1.0%</b>
12 - CAYMISKA IYO ADEEGYADA MAALIYADA	0.9%	-0.1%	<b>6.5%</b>
13 - DARYEELKA SHAKHSIGA AH, ILAALINTA BULSHADA IYO ALAAB KALA DUWAN	6.6%	8.4%	<b>16.7%</b>

**Jaantuska 3. Heerka qeybinta isbedelka boqoleyda ee sanadlaha ah**



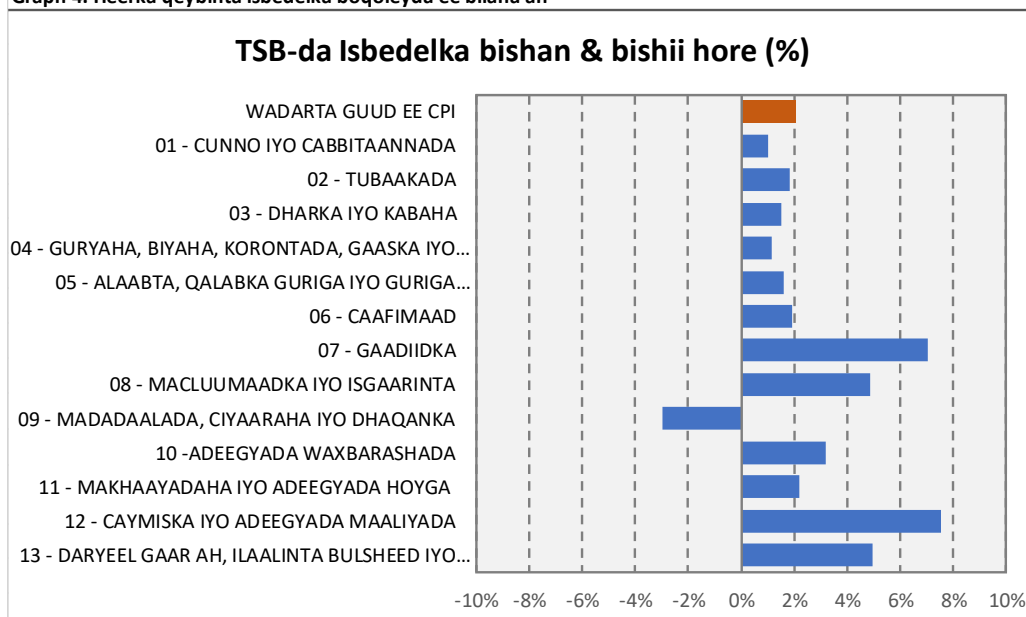
**Warbixin Kooban ee Dhaqdhaqaaqa Billaha ah**

- TSB-da waxay bishan sare u kacay by 2.1%. Sare u kaca ugu balaaran ayaa ka yimid:
  - Caymis iyo Adeegyo Maaliyadeed (+7.5%): Adeegyada Caymiska(+8.37%); Adeegyada Maaliyadeed (+749%).).
  - Gaadiidka (+7.0%): Adeegyada Rakaabka Gaadiidka (+8.27%).
  - Daryeelka Shakhsi ahaaneed, Ilaalinta Bulshada iyo Alaabooyinka iyo Adeegyada yar yar (+5.0%): Daryeelka Shakhsi ahaaneed (+5.42%);SaaMaajonta Shakhsi ahaaneed ee Kale (+2.39%).
  - Macluumaadka iyo Isgaarsiinta (+1.3%): Agabka (+0.07%); Adeegyada (+1.86%).
  - hoos u dhaca ugu weyn bishaan ayaa ahaa:
- Madadaalada, Ciyaaraha iyo Dhaqanka (-3.0%): Madadaalada waarta (-1.06%); Adeegyada Madadaalada (2.18%),Agabka Dhaqanka (-0.44%).

**Shaxda 3. heerka qaybta boqolkiiba isbeddelka bishii**

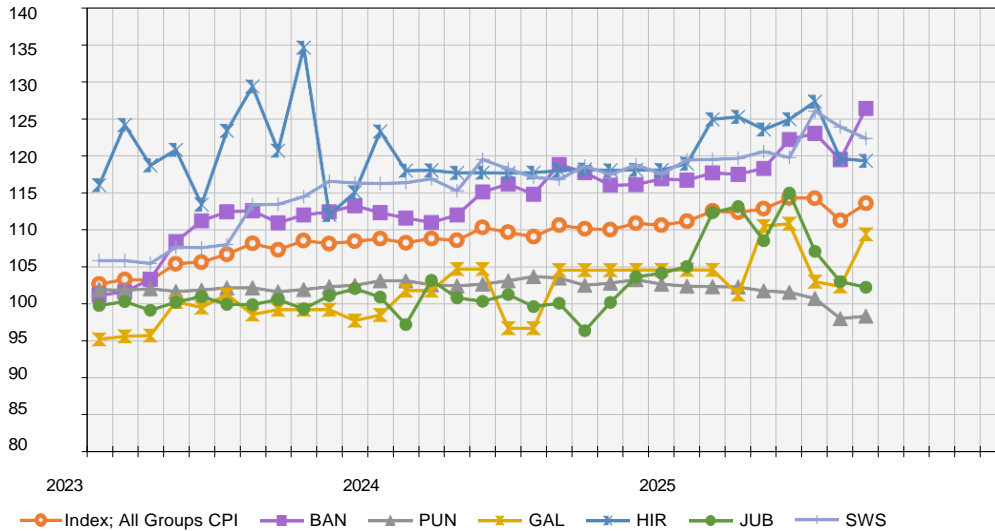
Qaybinta	% -beddel bishiiba		
	Maajo-25	Juun-25	Luulyo-25
WADARTA GUUD EE CPI	0.0%	-2.6%	2.1%
01-CUNNO IYO CABBITAANNADA	1.2%	-4.0%	1.0%
02 - TUBAAKADA	-0.4%	-1.5%	1.8%
03 - DHARKA IYO KABAHA	-1.3%	-2.3%	1.5%
04 - GURYAHA, BIYAHA, KORONTADA, GAASKA IYO SHIDAALKA KALE	-0.4%	-2.5%	1.1%
05 - ALAABTA, QALABKA GURIGA IYO GURIGA CAADIGA AH...	0.2%	-2.5%	1.6%
06 - CAAFIMAAD	0.4%	1.4%	1.9%
07 - GAADIIDKA	-2.1%	-1.9%	7.0%
08 - MACLUUMAADKA IYO ISGAARINTA	-0.1%	0.9%	4.8%
09 - MADADAALADA, CIYAARAHA IYO DHAQANKA	0.4%	1.3%	-3.0%
10 - ADEEGYADA WAXBARASHADA	-2.6%	2.3%	3.2%
11 - MAKHAAYADAHA IYO ADEEGYADA HOYGA	-7.5%	0.4%	2.2%
12 - CAYMISKA IYO ADEEGYADA MAALIYADA	0.3%	-1.2%	7.5%
13 - DARYEEL GAAR AH, ILAALINTA BULSHEED IYO KALA DUWANAANSHADA	0.6%	1.0%	5.0%

**Graph 4. Heerka qeybinta isbedelka boqoleyda ee bilaha ah**



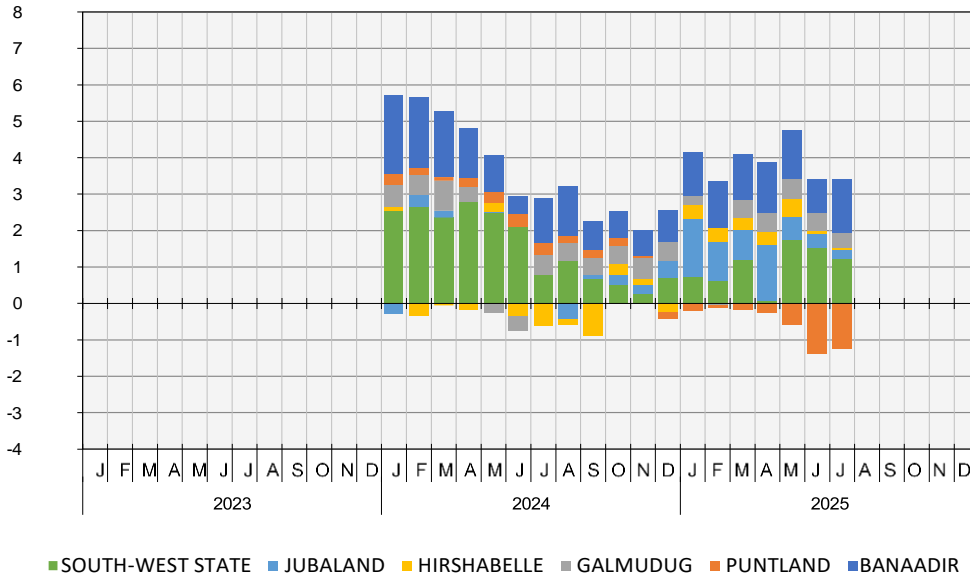
**Warbixinta TSB-da Soomaaliyeed – Isbarbardhiga Dowlad goboleedyada.**

Jaantuska 5. Tixraactada TSB-da ee dowlad goboleedyada  
Mudada Tixraaca = 2022



(a) Tixraca Puntland waa la qiyaasay

Jaantuska 6. Qeybaha ka qeybqaata(%)heerka sicir bararka dhamaan dowlad goboleedyada



(a) Tixraca Puntland waa la qiyaasay

**War bixin Kooban ee Dhaqdhaqaaqa Sanadlaha ah**

- Mudada 12 bilood ee la soo dhaafay ilaa maajo 2025 TSB-da, dhaqdhaqaaqyo sare u kac ah ayaa ka yimid Dowlad goboleedyada.
- Banaadir (+6.4%): Adeegyada Waxbarashada (+19.44%), Dharka iyo Kabaha (+18.02%), iyo Alaabta Guriga, Qalabka Guriga iyo Dayactirka Maalinlaha ah (+10.90%), iyadoo hoos u dhac ka yimid Qalabka Macluumaadka iyo Isgaarsiinta (-15.54%).
- Koonfur-Galbeed(+4.7%): Madadaalo, Ciyaaro iyo Dhaqan (+32.42%), iyo Daryeelka Shakhsiyeed, Ilaalinta Bulshada iyo Alaabooyinka iyo Adeegyada Kale (+19.65%).
- Galmudug (+4.6%): Daryeelka Shakhsiyeed, Ilaalinta Bulshada iyo Alaabooyinka iyo Adeegyada Kale (+12.56%), iyo Caafimaadka (+11.18%).

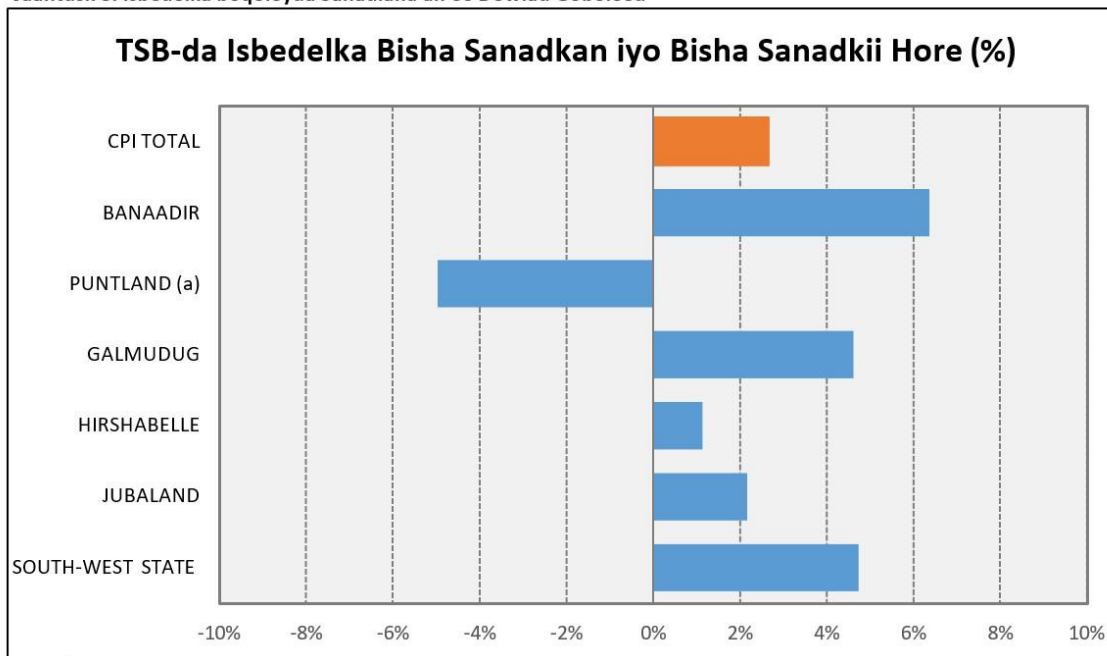
- Jubaland (+2.2%): Makhaayadaha iyo Adeegyada Hoyga (+24.70%), Guryaha, Biyaha, Korontada, Gaaska iyo Shidaalka Kale (+17.85%), iyadoo hoos u dhac ka yimid Qalabka Macluumaadka iyo Isgaarsiinta (-27.69%).
- Hirshabelle (+1.1%): Daryeelka Shakhsiyeed, Ilaalinta Bulshada iyo Qaybaha Kale (+3.24%).  
Intii lagu jiray bishii Luulyo 2025, dhaqdhaqaaqyo hoos u dhac ah ayaa ka yimid:
- Puntland (-5.0%): Cuntada iyo Cabitaanada (-3.6%).

**Shaxda 4. Boqolkiiba isbeddelka heerka gobolka**

Gobolka	% - isbeddel sannadle ah		
	Maajo-25	Juun-25	Luulyo 25
Wadarta guud ee CPI	4.2%	2.0%	2.7%
BANAADIR	5.9%	4.1%	6.4%
PUNTLAND	-2.3%	-5.5%	-5.0%
GALMUDUG	6.4%	5.8%	4.6%
HIRSHABELLE	8.2%	1.6%	1.1%
JUBALAND	5.7%	3.3%	2.2%
KOONFUR-GALBEED	6.6%	5.8%	4.7%

(a) Tixraca Puntland waa la qiyaasay

**Jaantusk 8. Isbedelka boqoleyda Sanadlaha ah ee Dowlad Goboleed**



(a) Tixraca Puntland waa la qiyaasay

**War bixin Kooban ee Dhaqdhaqaaqa Billaha ah**

Intii lagu jiray bishii luulyo 2025, dhaqdhaqaaqyada qiima kororka ayaa ka yimid:

- Galmudug (+6.9%): Makhaayadaha iyo Hoyga (+9.00%)
- Banaadir (+5.8%): Gaadiid (+16.5%)
- Puntland (+0.3%): Cuntada iyo Cabitaannada (-1.9%)

Inta lagu jiro bisha Luulyo 2025, dhaqdhaqaaqa xun ka yimid:

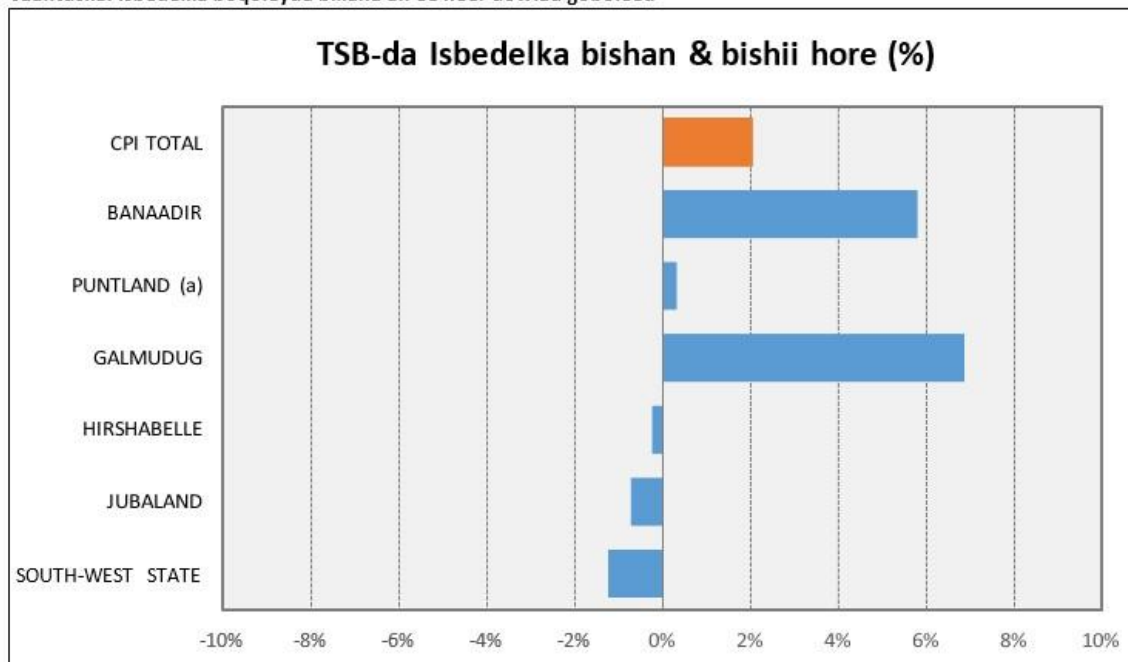
- Konfur galbeed (-1.2%): Caafimaadka (-3.00%).
- Jubaland (-0.7%): Dharka iyo Kabaha (-2.4%).
- Hirshabelle (-0.2%): Cuntada iyo Cabitaannada (-10.1%).

## Shaxda 5. Heer gobol ayaa isbeddelay boqolkiiba bishii

Gobolka	%beddel bishiiba		
	Maajo-25	Juun-25	Luulyo-25
Wadarta guud ee CPI	0.4%	1.3%	<b>0.3%</b>
BANAADIR	0.7%	-2.9%	<b>5.8%</b>
PUNTLAND	-0.8%	-2.7%	<b>0.3%</b>
GALMUDUG	-7.1%	-0.6%	<b>6.9%</b>
HIRSHABELLE	1.9%	-6.0%	<b>-0.2%</b>
JUBALAND	-6.8%	-3.8%	<b>-0.7%</b>
GOBOLKA KOONFUR-GALBEED	5.2%	-1.7%	<b>-1.2%</b>

(a) Tixraca Puntland waa la qiyaasay

## Jaantuska. Isbedelka boqoleyda billaha ah ee heer dowlad goboleed



(a) Tixraca Puntland waa la qiyaasay