

**SOMALI NATIONAL
BUREAU OF STATISTICS**
Federal Republic of Somalia

TUSAHA SICIRKA BADEECADAHA SOOMALIYA



MAARSO 2025

Tusaha Sicirka Badeecadaha, Soomaaliya

Hordhac

Tusaha Sicirka Badeecadaha (TSB) waa tilmaame dhaqaale oo muhiim ah oo hal beeg u ah isbeddelka guud ee isugeynta boqoleyda ee sicirka tafaariiqda ee badeecadaha iyo adeegyada ay iibsadaan qoysaska Soomaaliyeed. Waxay u adeegtaa sida qiyaasta asaasiga ah ee sicir bararka, ayada oo awood u siineysa siyaasad-dejiyayaasha, ganacsiyada, iyo cilmi-baarayaasha si ay u qiimeeyaan isbeddellada ascaarta una sameeyaan go'aamo dhaqaale oo maan-gal ah. Janaayo 2025, TSB-da Soomaaliya ayaa la sii daayay iyadoo la tixgelinayo hal beeg cusub oo laga soo qaatay Sahanka Kharashaadka Qoysaska Soomaaliya ee 2022 (SIHBS), iyadoo lagu lifaaqayo qaybinta cusub ee kharashka qoysaska (COICOP 2018), kana turjumeysa dhammaan Dowladaha Xubnaha ka ah Dowlada Federaalka ah ee Soomaaliya. Fiiro gaar ah oo ku saabsan habraaca ayaa lagu soo bandhigi doonaa Bogga Internet-ka ee SNBS.

TSB (Tusaha Sicirka Badeecadaha) waxaa lagu qeexay sidan:

"Cabbirka celceliska Hal beega isbedelka qiimaha tafaariiqda ee ay macaamiishu ku bixiyeen agabka iyo adeegyada mudo go'an ka dib." meelaha ugu muhimsan ee TSB-da loo adeegsan karo waxaa ka mid ah:

- Cabirka Sicir-bararka: Sicir-bararka sannadlaha ah (YoY) wuxuu isbarbar dhigayaa qiimaha hadda ee sanadkan iyo isla qiimahaas sannadkii hore, isagoo u adeegaya sida agab loogu talagalay siyaasadda lacagta iyo maaliyadda.
- Go'aan-qaadasho Dhaqaale: Waxaa isticmaala hay'adaha dawladda, ganacsiyada, iyo hay'adaha caalamiga ah si ay u hagaajiyaan mushaharka, qandaraasyada, iyo ka faa'ideyga bulshada.
- Falanqeynta Dhaqaalaha Balaaran: Waxay taageertaa qiimeynta awoodda wax iibsiga, hagaajinta qiimaha kharashka-nololeed, iyo xasiloona dhaqaalaha.

Hab Ururinta Qiimaha:

- Si joogta ah: Waxa loo sameeyaa toddobaadka ugu horreeya iyo kan saddexaad ee bil kasta.
- Deeganada laga soo uruuriyo: Muqdisho (Caasimadda), Dhammaan Dawladaha Xubinta ka ah Dawladda Federaalka (FMS).
- Tiradda Madeecadaha: 537 shey, oo laga soo xulay Sahankii 2022 SIHBS, oo lagu kala saaray nidaamka Kala-soocidda Qaybaha Istiticmaalka Qofka (COICOP) 2018 oo ka kooban 13 qaybood.

Istaatistikada Muhiimka ah

Sannadle

Laba iyo tobankii bilood ee la soo dhaafay ilaa Maarso 2025, TSB-da waxay sare u kacday 3.9%.

- Qiima Kororka ugu badnaa 12-kii bilood ee la soo dhaafay ayaa ka yimid Gaadiidka (+8.0%), Makhaayadaha iyo Adeegyada Hoyga (+6.5%), Dharka iyo Kabaha (+6.3%), Madadaalada, Isboortiga iyo Dhaqanka (+6.1%), Guryaha, Biyaha, Korontada, Gaaska iyo Shidaalka Kale (+5.8%).
- Waxaa habacsanan ku timid qeyb ahaan qiima koror qeybta Macluumaadka iyo Isgaarsiinta (-7.9%) iyo Tubaakada oo gaartay (-2.7%).
- Qiima koror xooggan ayaa laga diiwaan geliyay dhammaan gobolada dawlad-goboleedka Jubaland (+7.7%), Banaadir (+5.6%), Galmudug (+5.5%), Hirshabelle (+5.0%) iyo Koonfur-galbeed (+4.6%).
- habacsanan yar ayaa ka timid Dowlad Goboleedka Puntland (-0.7%) taas oo sigaar ah u sameysay saameyn xoogan.

Bille

Tusaha Sicirka Badeecadaha (TSB) waxuu sare u kacday 0.4% bishan.

- Qiima kororka ugu weyn bishan waxuu ahaa Waxbarashada (+2.0%), Caafimaadka (+1.7%). Agabka, Agabka Guriga Iyo Dayactirka Guriga Ee Joogtada Ah (+1.4%) iyo Tubaakada oo gaartay (+1.4%).
- Habacsanan yar ayaa ka jirtay dhinaca qiima kororka Macluumaadka iyo Isgaarsiinta (-2.1%) iyo Gaadiidka (-0.6%) iyo Makhaayadaha Iyo Adeegyada Hoyga oo gaartay (-0.6%).
- Sare u kaca ugu badan ayaa ka yimid Dowlad Goboleedka Galmudug (+9.1%) sidoo kale habacsananta

ayaa ka timid Jubaland (-4.1%) iyo Hirshabelle (-1.3%).

Shaxda 1. TSB, Dhaqdhaqaaqyada Sanadlaha & Billaha ah ee Soomaaliyeed (%)

	Isbedelka Billaha ah (%)	Isbedelka Sanadlaha ah (%)
Mar-25	0.4%	3.9%
Feb-25	-0.2%	3.2%
Jan-25	1.3%	4.0%

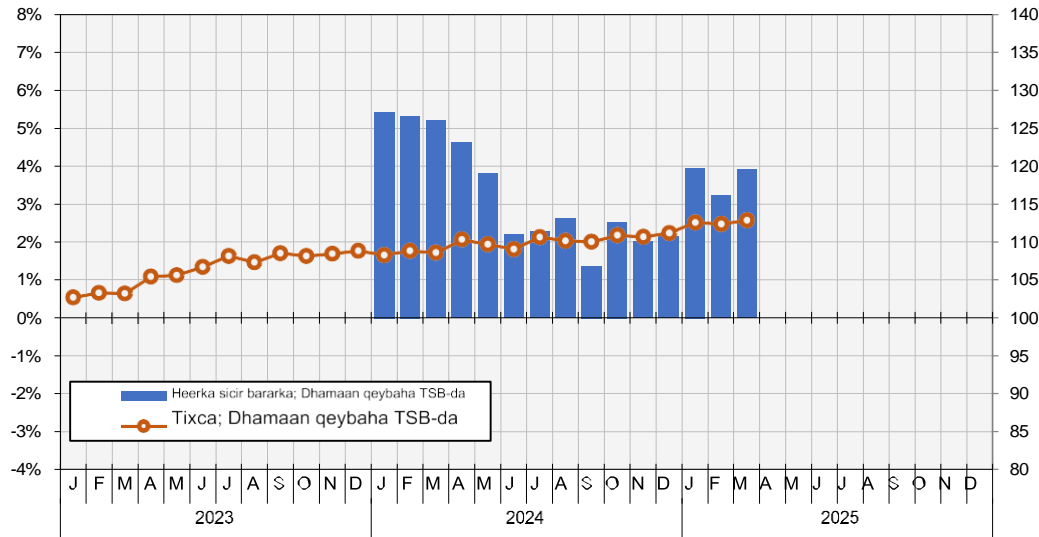
warbixinta TSB-da ee Soomaaliyeed – Dhamaan qeybaha TSB-da

Jaantuska 1. Heerka sicir bararka marka eego TSB-da

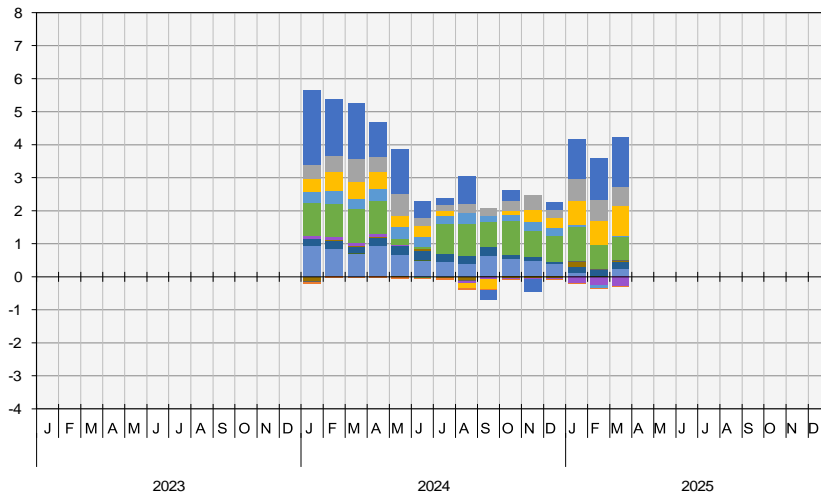
Tixraca TXB-da

Isbedelka boqoleyda ee 12 billood.

Mudada Tixraca= 2022



Jaantuska 2. Qeybaha ka qeybqaata (%) heerka sicir bararka (habka qeybinta)



- 01 - CUNTO IYO CABITAANNADA
- 02 - TUBAAKADA
- 03 - DHARKA IYO KABAHA
- 04 - GURYAHA, BIYAHA, KORONTADA, GAASKA IYO SHIDAALKA KALE
- 05 - AGABKA, AGABKA GURIGA IYO DAYACTIRKA GURIGA EE JOOGTADA AH
- 06 - CAAFIMAADA
- 07 - GAADIIDKA
- 08 - MACLUUMAADKA IYO ISGAARINTA
- 09 - MADADAALADA, CIYAARAHA IYO DHAQANKA
- 10 - ADEEGYADA WAXBARASHADA
- 11 - MAKHAAYADAHAA IYO ADEEGYADA HOYGA
- 12 - CAYMISKA IYO ADEEGYADA MAALIYADA
- 13 - DARYEELKA SHAKHSIGA AH, DARYEELKA BULSHADA IYO ADEEGYADA YAR YAR.

War bixin Kooban ee Dhaqdhaqaaqa Sannadlaha ah

Muddo 12 bilood ah ilaa Maarso 2025, TSB-da ayaa sare u kacay 3.9%.

Qiima kororka ugu badnaa ee 12 bilood ayaa laga dareemay:

- Gaadiidka (+8.0%): qiima koror ugu weyn ayaa sameyey adeegga Rakaabka Gaadiidka (+9.1%).
- Makhaayadaha Iyo Adeegyada Hoyga (+6.5%): Cunto Iyo Cabitaannada (+6.8%); Hoyga (+5.0%)
- Kabaha iyo Dharka (+6.3%): Dharka (+6.9%); Kabaha (+4.1%)
- Madadaalada, Isboortiga iyo Dhaqanka (+6.1%): Agabka madadaalada ee cumriga dheer (+14.0%); Adeega Dhaqanka (+9.0%); Agabka dhaqanka (+6.1); Wargeysyada iyo Dukanaka Buugagta (Stationary) (+5.9%).
- Guryaha, Biyaha, Korontada, Gaaska Iyo Shidaalka Kale (+5.8%): Biyo Gelinta (+13.42%); Dayactirka iyo Hagaajinta Agabka (+12.0%), habacsanan ka timid dhanka Korontada, Gaaska Iyo Shidaalka Kale (-1.4%).

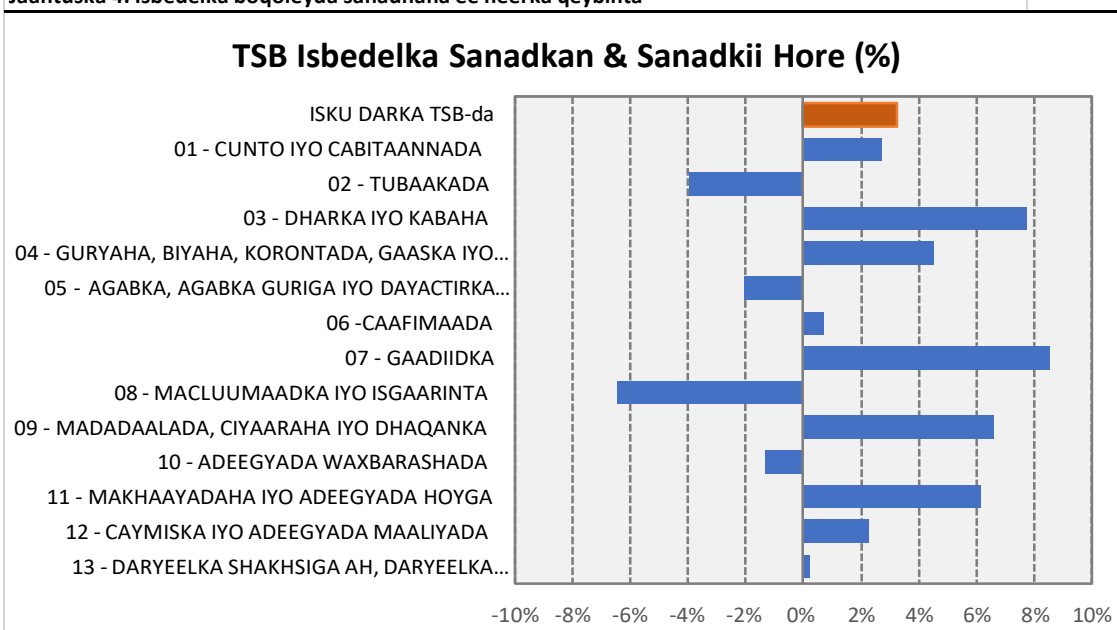
Qiima dhaca ugu badnaa ee 12 bilood ayaa laga dareemay:

- Macluumaadka Iyo Isgaarinta (-7.9%): Agabka (-9.8%); Adeega (-7.0%)
- Tubaakada (-2.7%): Tubaakada (-3.8%) Habacsananta Tubaakada (+3.3%)

Shaxda 3. Isbedelka boqoleyda sanadlaha ee heerka qeybinta

Qeybin	% - Isbedelka sanadlaha ah		
	Jan-25	Feb-25	Mar-25
ISKU DARKA TSB-da	4.0%	3.2%	3.9%
01 - CUNTO IYO CABITAANNADA	2.6%	2.7%	3.2%
02 - TUBAAKADA	-1.8%	-4.0%	-2.7%
03 - DHARKA IYO KABAHA	8.0%	7.7%	6.3%
04 - GURYAHA, BIYAHA, KORONTADA, GAASKA IYO SHIDAALKA KALE	4.5%	4.5%	5.8%
05 - AGABKA, AGABKA GURIGA IYO DAYACTIRKA GURIGA EE JOOGTADA AH...	1.3%	-2.1%	0.5%
06 - CAAFIMAADA	2.0%	0.7%	1.4%
07 - GAADIIDKA	12.1%	8.5%	8.0%
08 - MACLUUMAADKA IYO ISGAARINTA	-6.1%	-6.5%	-7.9%
09 - MADADAALADA, CIYAARAHA IYO DHAQANKA	4.9%	6.6%	6.1%
10 - ADEEGYADA WAXBARASHADA	7.3%	-1.3%	1.9%
11 - MAKHAAYADAHA IYO ADEEGYADA HOYGA	6.2%	6.2%	6.5%
12 - CAYMISKA IYO ADEEGYADA MAALIYADA	2.0%	2.2%	2.2%
13 - DARYEELKA SHAKHSIGA AH, DARYEELKA BULSHADA IYO ADEEGYADA YAR YAR...	2.4%	0.2%	5.0%

Jaantuska 4. Isbedelka boqoleyda sanadnaha ee heerka qeybinta



Warbixin Kooban ee Dhaqdhaqaaqa Billaha ah

TSB-da waxay bishan sare u kacay -0.4%.

Qiima kororka ugu badan ayaa ka yimid:

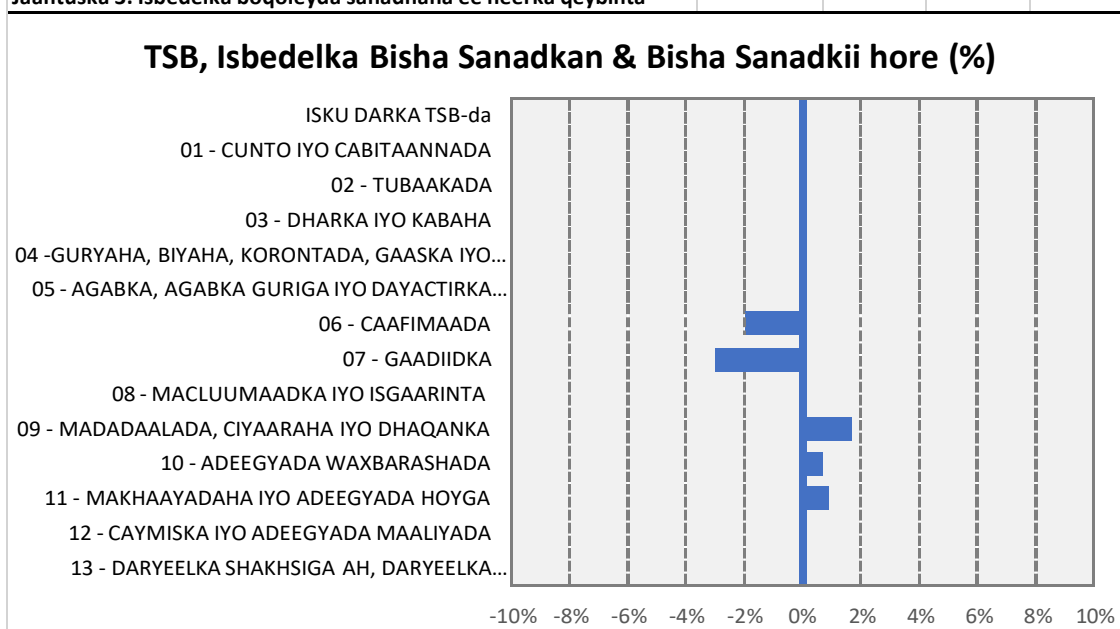
- Waxbarashada (+2.0%): Waxbarasha Dugsiga sare (+5.9%); Caruurta yar yar iyo Dugsiga hoose (+1.9%).
- Caafimaadka (+1.7%): Dawada iyo Agabka Caafimaadka (+2.9%); Adeegyada kale ee caafimaad (+2.5%).
- Guryaha, Biyaha, Korontada, Gaaska Iyo Shidaalka Kale, (+1.4%): Korontada, Gaaska Iyo Shidaalka Kale (+1.9%); Biyo gelinta iyo Adeegyada yar yar (1.9%).
- Tubaakada (+1.4%): Tubaakada (+2.6%); Balawadaha kale (+1.1%)

Qiima dhaca ugu badan ayaa ka yimid:

- Macluumaadka Iyo Isgaarsiinta (-2.1%): Adeega (-3.0%); Agabka (-0.3%).

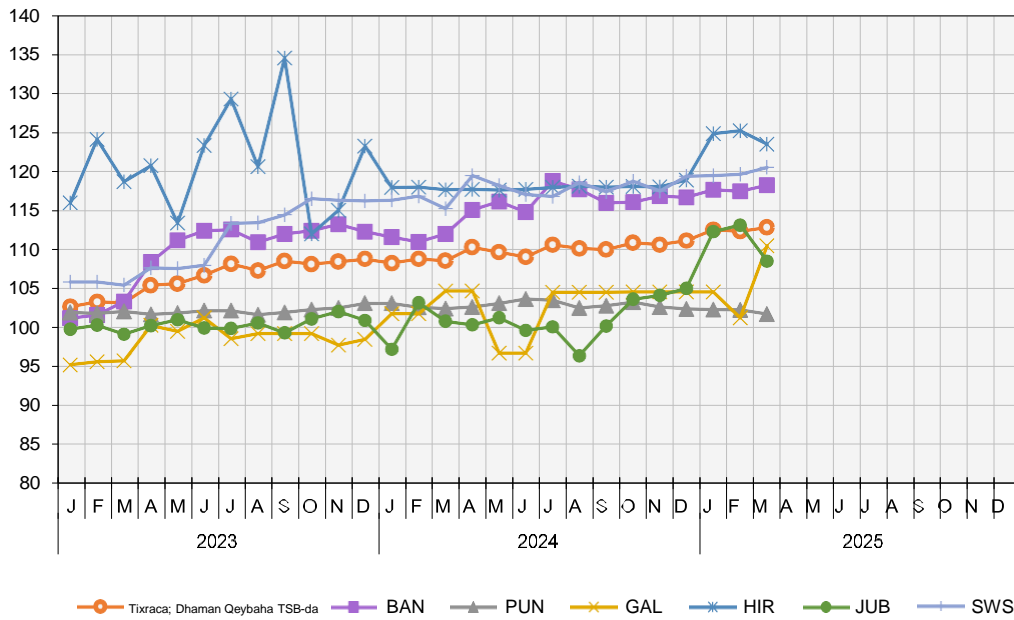
Shaxda 2. Isbedelka boqoleyda Billaha ee heerka qeybinta

Dowlad Goboleed	% Isbedelka Billaha ah		
	Jan-25	Feb-25	Mar-25
ISKU DARKA TSB-da	1.3%	-0.2%	0.4%
01 - CUNTO IYO CABITAANNADA	1.1%	-0.2%	0.4%
02 - TUBAAKADA	-2.0%	-0.5%	1.4%
03 - DHARKA IYO KABAHA	2.8%	0.6%	0.8%
04 -GURYAHA, BIYAHA, KORONTADA, GAASKA IYO SHIDAALKA KALE	-0.6%	0.6%	1.4%
05 - AGABKA, AGABKA GURIGA IYO DAYACTIRKA GURIGA EE JOOGTADA AH...	1.0%	-0.1%	0.0%
06 - CAAFIMAADA	0.3%	-1.7%	1.7%
07 - GAADIIDKA	3.0%	-3.1%	-0.6%
08 - MACLUUMAADKA IYO ISGAARINTA	-6.3%	0.5%	-2.1%
09 - MADADAALADA, CIYAARAHA IYO DHAQANKA	1.9%	1.6%	0.3%
10 - ADEEGYADA WAXBARASHADA	1.1%	0.6%	2.0%
11 - MAKHAAYADAHA IYO ADEEGYADA HOYGA	4.9%	0.9%	-0.6%
12 - CAYMISKA IYO ADEEGYADA MAALIYADA	0.7%	-0.1%	0.0%
13 - DARYEELKA SHAKHSIGA AH, DARYEELKA BULSHADA IYO ADEEGYADA YAR YAR...	7.1%	-0.1%	0.4%

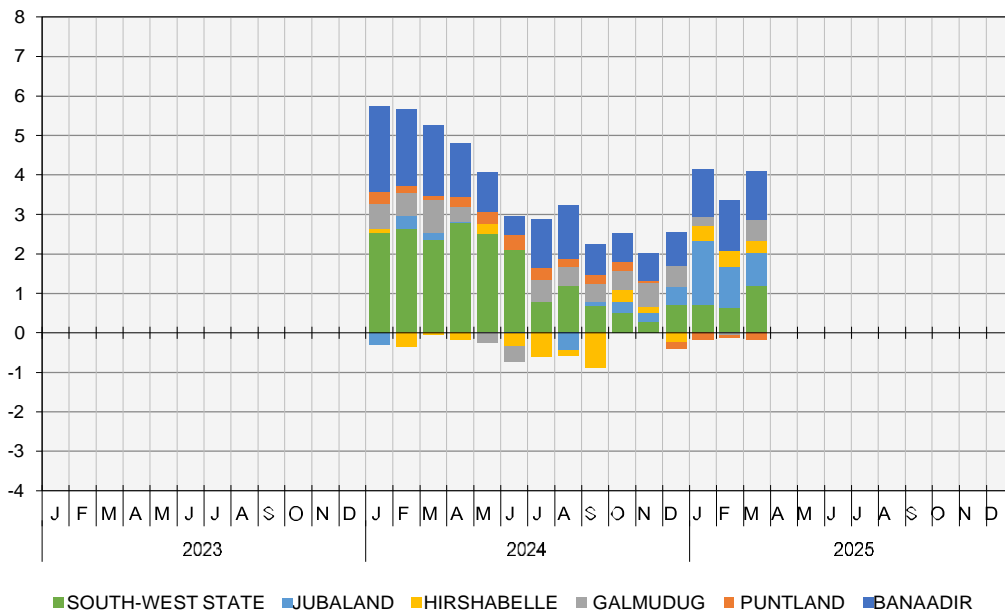
Jaantuska 3. Isbedelka boqoleyda sanadnaha ee heerka qeybinta

Warbixinta TSB-da Soomaaliyeed – Isbarbardhiga Dowlad goboleedyada

Jaantuska 5. Min dowlad goboleed & Tixraca TSB-da
Mudada Tixraca = 2022



Jaantuska 6. Qeybaha ka qeybqaata (%) heerka sicir bararka (Qeybin heer dowlad goboleed).



War bixin Kooban ee Dhaqdhaqaaqa Sanadlaha ah

Muddo 12 bilood ah ilaa Maarso 2025, TSB-da, Dowlad goboleedyada dhaqdhaqaaqyada sare u kaca sameeyey waxaa ka mid ah:

- Galmudug (5.5%): Cunto Iyo Cabitaannada (+9.7%), Caafimaadka (+9.0), Daryeelka Shakhsiga ah, Daryeelka Bulshada Iyo Adeegyada Yar Yar (+4.6%), Madadaalada, Ciyaaraha Iyo Dhaqanka (+3.6%).
- Banaadir (5.6%): Gaadiidka (+20.5%), Daryeelka Shakhsiga Ah, Daryeelka Bulshada Iyo Adeegyada Yar Yar (+10.2%) iyo Cuntada (+6.8%) Habacsananta Macluumaadka Iyo Isgaarsiinta (-22.3%)
 - Koonfur Galbeed (4.6%): Madadaalada, Ciyaaraha Iyo Dhaqanka (+23.5%), Gaadiidka (+15.5%) iyo Cunto Iyo Cabitaannada (+4.3%) Habacsananta Tubaakada iyo Qaat-ka (-12.2%).
 - Jubaland (7.8%): Madadaalada, Ciyaaraha Iyo Dhaqanka (+23.5%), Guryaha, Biyaha, Korontada, Gaaska Iyo Shidaalka Kale (+36.3%) Habacsananta ku timid Macluumaadka Iyo Isgaarsiinta (-29.0%).

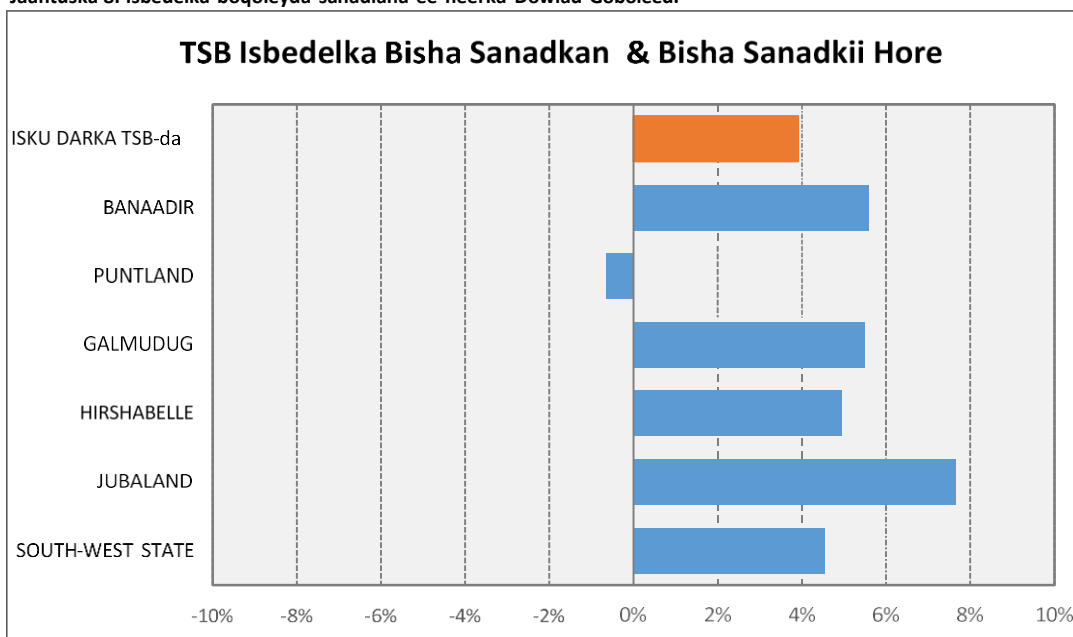
Laba iyo tobankii bilood ee la soo dhaafay ilaa Maarso 2025, Qiima dhac ku yimid ayaa ka ahaa:

- Puntland (-0.7%): Cunto Iyo Cabitaannada (-3.6%)

Shaxda 5. Isbedelka boqoleyda sanadlaha ah ee heerka qeybinta.

Dowlad Goboleed	% Isbedelka Sanadlaha ah			
	Jan-25	Feb-25	Mar-25	
ISKU DARKA TSB-da	4.0%	3.2%	3.9%	
BANAADIR	5.4%	5.9%	5.6%	
PUNTLAND	-0.8%	-0.3%	-0.7%	
GALMUDUG	2.7%	-0.5%	5.5%	
HIRSHABELLE	5.9%	6.1%	5.0%	
JUBALAND		9.6%	7.7%	
SOUTH-WEST STATE	15.5%	2.7%	2.4%	4.6%

Jaantuska 8. Isbedelka boqoleyda sanadlaha ee heerka Dowlad Goboleed.



War bixin Kooban ee Dhaqdhaqaaqa Billaha ah

Intii lagu jiray bishii Maarso 2025, dhaqdhaqaaqyada qiima kororka ayaa ka yimid:

- Galmudug (9.1%): Cunto Iyo Cabitaanada (+15.6%), Caafimadka (+13.2%), Daryeelka Shakhsiga ah, Daryeelka Bulshada Iyo Adeegyada Yar Yar (+8.2%), Madadaalada, Ciyaaraha Iyo Dhaqanka (+6.6%)
- Banaadir (0.7%): Tubaakada and Qaat-ka (+3.9%).
- Koonfur Galbeed (0.7%): Cunto Iyo Cabitaanada (+1.0%) iyo Guryaha, Biyaha, Korontada, Gaaska Iyo Shidaalka Kale (+2.2%).

Intii lagu jiray bishii Maarso 2025, dhaqdhaqaaqyada qiima kororka ayaa ka yimid:

- Jubaland (-4.1%): Madadaalada, Ciyaaraha Iyo Dhaqanka (-20.7%), Gaadiidka (-10.4%) iyo Cuntada (-6.2%).
- Hirsabelle (-1.3%): Agabka, Agabka Guriga Iyo Dayactirka Guriga ee Joogtada a (-4.1%), Cuntada (-2.7%).
- Puntland (-0.5%): Cunta Iyo Cabitaanada (-1.9%)

Shaxda 4. Isbedelka boqoleyda billaha ah ee heerka qeybinta.

Dowlad Goboleed	Jan-25	% Isbedelka Billaha ah		
		Feb-25	Mar-25	
ISUGEYNTA TSB-da		1.3%	-0.2%	0.4%
BANAADIR	0.8%	-0.1%	0.7%	
PUNTLAND	-0.1%	0.0%	-0.5%	
GALMUDUG	0.0%	-3.2%	9.1%	
HIRSHABELLE	5.0%	0.3%	-1.3%	
JUBALAND	6.9%	0.7%	-4.1%	
SOUTH-WEST STATE	0.1%	0.2%	0.7%	

Jaatuska 7. Isbedelka Boqoleyda Billaha ah ee heer Dowlad Goboleed

