



**SOMALI NATIONAL
BUREAU OF STATISTICS**
Federal Republic of Somalia

TUSAHA SICIRKA BADEECADAHA SOOMALIYA



ABRIIL 2025

Tusaha Sicirka Badeecadaha, Soomaaliya

Hordhac

Tusaha Sicirka Badeecadaha (TSB) waa tilmaame dhaqaale oo muhiim ah oo hal beeg u ah isbeddelka guud ee isugeynta boqoleyda ee sicirka tafaariiqda ee badeecadaha iyo adeegyada ay iibsadaan qoysaska Soomaaliyeed. Waxay u adeegtaa sida qiyaasta asaasiga ah ee sicir bararka, ayada oo awood u siineysa siyaasad-dejiyeyaasha, ganacsiyada, iyo cilmi-baarayaasha si ay u qiimeeyaan isbeddellada ascaarta si ay u sameeyaan go'aamo dhaqaale oo maan-gal ah. Tan iyo Janaayo 2025, TSB-da Soomaaliya ayaa la sii daayay iyadoo la tixgelinayo hal beeg cusub oo laga soo qaatay Sahan Kharashaadka Qoysaska Soomaaliya ee 2022 (SIHBS), iyadoo lagu lifaaqaayo kalasaarida cusub ee kharashka qoysaska (COICOP 2018), kana turjumeysa dhammaan Doladaha Xubnaha ka ah Dowlada Federaalka ah ee Soomaaliya. qoraal ku saabsan habraaca ayaa lagu soo bandhigi doonaa Bogga Internet-ka ee SNBS.

Tusaha Sicirka Badeecadaha (TSB) waxaa lagu qeexay sidan:

"Cabbirka celceliska Hal beega isbedelka qiimaha tafaariiqda ee ay macaamiishu ku bixiyeen agabka iyo adeegyada mudo go'an ka dib." meelaha ugu muhimsan ee TSB-da loo adeegsan karo waxaa ka mid ah:

- Cabirka Sicir-bararka: Sicir-bararka sannadlaha ah (YoY) wuxuu isbarbar dhigayaa qiimaha hadda ee sanadkan iyo isla qiimahaas sannadkii hore, isagoo u adeegaya sida agab loogu talagalay siyaasadda lacagta iyo maaliyadda.
- Go'aan-qaadasho Dhaqaale: Waxaa isticmaala hay'adaha dawladda, ganacsiyada, iyo hay'adaha caalamiga ah si ay ugu jaan gooyaan mushaharka, qandaraasyada, iyo ka faa'iidooyinka bulshada.
- Falanqeynta Dhaqaalaha Balaaran: Waxay taageertaa qiimeynta awoodda wax iibsiga, hagaajinta qiimaha kharashka-nololeed, iyo xasiloonaada dhaqaalaha.

Hab Ururinta Qiimaha:

- Si joogta ah: Waxa loo sameeyaa toddobaadka ugu horreeya iyo kan saddexaad ee bil kasta.
- Deeganada laga soo uruuriyo: Muqdisho (Caasimadda), Dhammaan Dawladaha Xubinta ka ah Dawladda Federaalka (FMS).
- Ashyaada ama badeecadaha: 537 shey, oo laga soo xulay Sahankii 2022 SIHBS, oo lagu kala saaray nidaamka Kala-soocidda Qaybaha Istimaalka Qofka (COICOP) 2018 oo ka kooban 13 qaybood.

Istaatistikada Muhiimka ah

Sannadle

Laba iyo tobankii bilood ee la soo dhaafay ilaa Abriil 2025, TSB-da waxay sare u kacday 3.6%.

- Qiima Kororka ugu badnaa 12-kii bilood ee la soo dhaafay ayaa ka yimid Gaadiidka (+11.1 %), Makhaayadaha iyo Adeegyada Hoyga (+7.5%), Dharka iyo Kabaha (+5.0%), Madadaalada, Isboortiga iyo Dhaqanka (+6.1%), Guryaha, Biyaha, Korontada, Gaaska iyo Shidaalka Kale (+7.2%).
- Waxaa qeyb ahaan hoos u dhacay qeybta Macluumaadka iyo Isgaarsiinta (-7.6%) iyo Tubaakada oo gaartay (-2.1%).
- Qiima koror xooggan ayaa laga diiwaan geliyay bishii Abriil dhammaan gobolada dawlad-goboleedka Jubaland (+14.5%), Banaadir (+6.1%), Galmudug (+5.8%), Hirshabelle (+6.1%) iyo Koonfur-galbeed (+0.2%).
- Hoos u dhac yar oo ka yimid Dowlad Goboleedka Puntland (-1.1%) ayaa saameyn yeeshay sababo la xariira miisaankood.

Bille

Tusaha Sicirka Badeecadaha (TSB) waxuu sare u kacday 1.3% bishan.

- Qiima kororka ugu weyn bishan waxuu ahaa gaadiidka (+3.1%), Guryaha, Korontada, Biyaha iyo shidaalka kale ayaa gaaray (+1.8%). Agabka, qalabka Guriga Iyo Dayactirka Guriga Ee Joogtada Ah (+1.8%) iyo Muqaayadaha iyo adeegyada hoyga (+1.8%).
- Waxaa qeyb ahaan Hoos dhacay ceymiska iyo adeegyada maaliyadeed (-0.1%) MacluumaadIsgaarsiinta (-2.1%) iyo Gaadiidka (-0.6%) iyo Makhaayadaha Iyo Adeegyada Hoyga oo gaartay (-0.6%).
- Qiimo kororka ugu badan ayaa ka yimid Dowlad Goboleedka Jubaland (+5.9%) sidoo kale hoos u dhac ayaa ka timid Koofur galbeed (-0.6%).

Shaxda 1. TSB, Dhaqdhaqaaqyada Sanadlaha & Billaha ah ee Soomaaliyeed (%)

	Isbedelka Billaha ah (%)	Isbedelka Sanadlaha ah (%)
Abr-25	1.3%	3.6%
Mar-25	0.4%	3.9%
Feb-25	-0.2%	3.2%

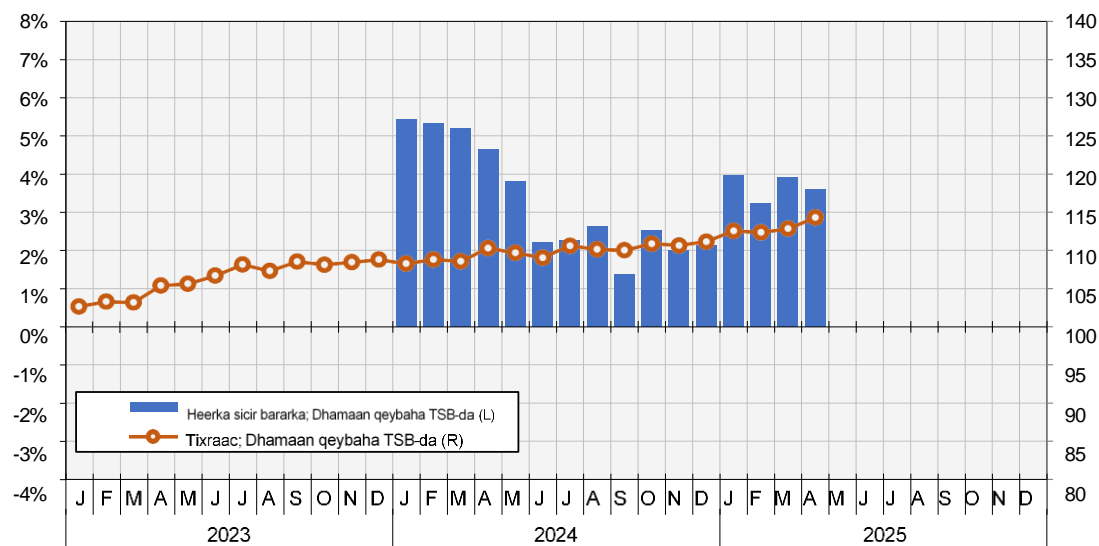
warbixinta TSB-da ee Soomaaliyeed – Dhamaan qeybaha TSB-da

Jaantuska 1. Heerka sicir bararkamarkaloo eego TSB-da

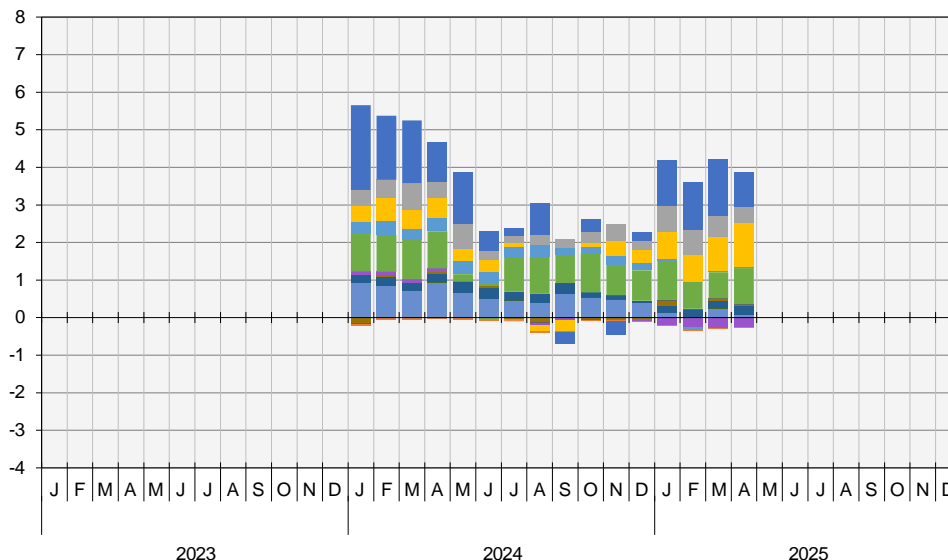
Isbedelka boqoleyda ee 12 billod

Tixraca TSB-da

Tixraaca mudada = 2022



Jaantuska 2. Qeybaha ka qeybqaata (%) heerka sicir bararka (heerka qeybinta)



- 01 - CUNTO IYO CABITAANNADA
- 02 - TUBAAKADA
- 03 - DHARKA IYO KABAHA
- 04 - GURYAHA, BIYAHA, KORONTADA, GAASKA IYO SHIDAALKA KALE
- 05 - AGABKA, AGABKA GURIGA IYO DAYACTIRKA GURIGA EE JOOGTADA AH
- 06 - CAAFIMAADA
- 07 - GAADIIDKA
- 08 - MACLUUMAADKA IYO ISGAARINTA
- 09 - MADADAALADA, CIYAARAHA IYO DHAQANKA
- 10 - ADEEGYADA WAXBARASHADA
- 11 - MAKHAAYADAHA IYO ADEEGYADA HOYGA
- 12 - CAYMISKA IYO ADEEGYADA MAALIYADA
- 13 - DARYEELKA SHAKHSIGA AH, DARYEELKA PULSHADA IYO ADEEGYADA YAR YAR.

War bixin Kooban ee Dhaqdhaqaaqa Sannadlaha ah

Muddo 12 bilood ah ilaa Abriil 2025, TSB-da ayaa sare u kacay 3.6%.

Qiima kororka ugu badnaa ee 12 bilood ayaa ahaa:

- Gaadiidka (+11.1): adeega Rakaabka ku bixyaan Gaadiidka (+12.95%).
- Makhaayadaha Iyo Adeegyada Hoyga (+7.5%): Cunto Iyo Cabitaannada (+7.93%); Hoyga (+5.70%)
- Guryaha, Biyaha, Korontada, Gaaska iyo Shidaalka kale (+7.2%); Biyo galinta (+16.75%); Dayactirka, hagaajinta iyo amniga (11.26%).
- Dharka iyo kabaha (+5.0%): Dharka (+5.32%); Kabaha (+3.76%)
- Madadaalada, Isboortiga iyo Dhaqanka (+4.1%): Agabka madadaalada ee cumriga dheer (+15.68%); Alaabada kale ee Dhaqanka (+11.50%); Adeega dhaqanka (+8.87).

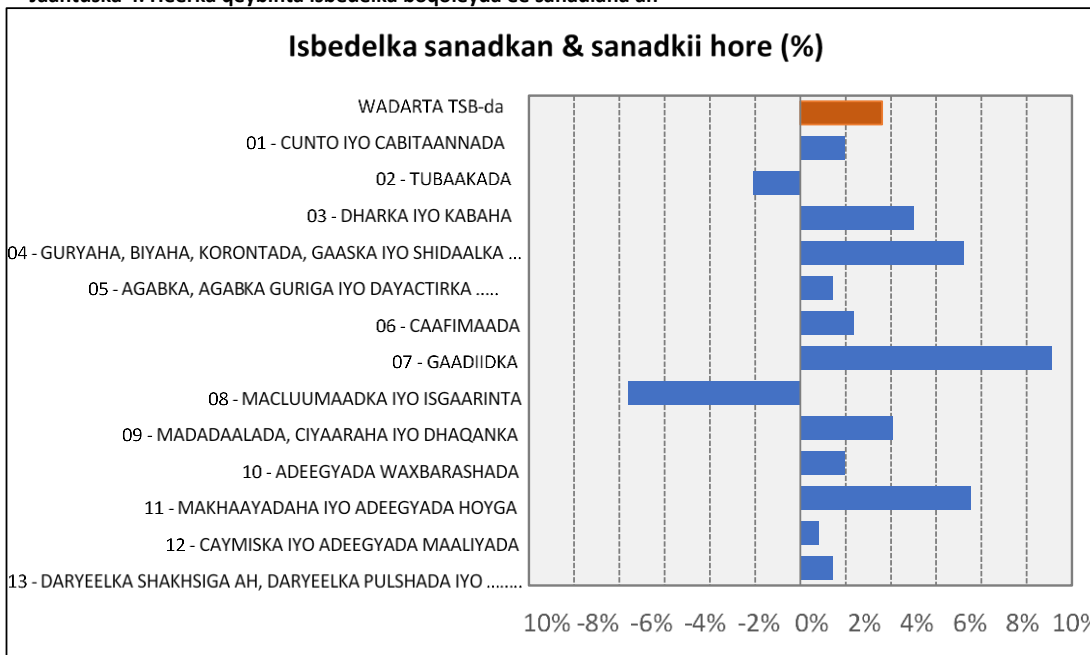
Qiima dhaca ugu badnaa ee 12 bilood ayaa laga dareemay:

- Macluumaadka Iyo Isgaarinta ((-7.6%): Agabka (-9.47%); Adeega (-6.79%)
- Tubaakada (-2.1%): Tubaakada (-3.32%) Hoos u dhaca Tubaakada (+4.61%)

Shaxda 3. Isbedelka boqoleyda sanadlaha ee heerka qeybinta

Qeybin	% - Isbedelka sanadlaha ah		
	Feb-25	Mar-25	Abriil-25
ISKU DARKA TSB-da	3.2%	3.9%	3.6%
01 - CUNTO IYO CABITAANNADA	2.7%	3.2%	2.0%
02 - TUBAAKADA	-4.0%	-2.7%	-2.1%
03 - DHARKA IYO KABAHA	7.7%	6.3%	5.0%
04 - GURYAHA, BIYAHA, KORONTADA, GAASKA IYO SHIDAALKA KALE	4.5%	5.8%	7.2%
05 - AGABKA, AGABKA GURIGA IYO DAYACTIRKA GURIGA EE JOOGTADA AH...	-2.1%	0.5%	1.4%
06 - CAAFIMAADA	0.7%	1.4%	2.3%
07 - GAADIIDKA	8.5%	8.0%	11.1%
08 - MACLUUMAADKA IYO ISGAARINTA	-6.5%	-7.9%	-7.6%
09 - MADADAALADA, CIYAARAHA IYO DHAQANKA	6.6%	6.1%	4.1%
10 - ADEEGYADA WAXBARASHADA	-1.3%	1.9%	2.0%
11 - MAKHAAYADAHADA IYO ADEEGYADA HOYGA	6.2%	6.5%	7.5%
12 - CAYMISKA IYO ADEEGYADA MAALIYADA	2.2%	2.2%	0.8%
13 - DARYEELKA SHAKHSIGA AH, DARYEELKA BULSHADA IYO ADEEGYADA YAR YAR...	0.2%	5.0%	1.4%

Jaantuska 4. Heerka qeybinta isbedelka boqoleyda ee sanadlaha ah



Warbixin Kooban ee Dhaqdhaqaaqa Billaha ah

TSB-da waxay bishan sare u kacay 1.3%.

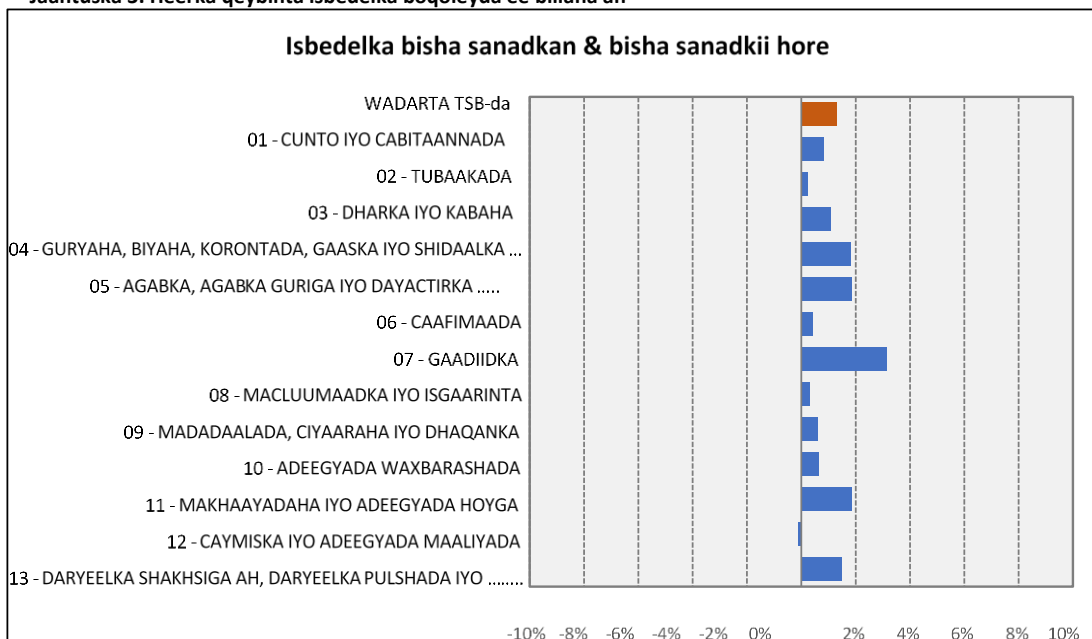
Qiima kororka ugu badan ayaa ka yimid:

- Gaadiidka (+3.1%): Rarista Rakaab ka iyo badeecadaha (+3.02%); Adeega Rarista badeecadaha (2.90%)
- Guryaha, Biyaha, Korontada, Gaaska Iyo Shidaalka Kale, (+1.8%); Biyo galinta (2.84%) (Korontada, Gaaska Iyo Shidaalka Kale (+2.78%).
- Agabka, Qalabka Guryaha ee joog tada ah (+1.8%); qurxinta Guryaha (+1.54%); Alaabta Galaask ah, Maacuunta iyo Qalabka Guryaha (+5.88%).
- Muqaayadaha iyo Adeegyada Hoyga (+1.8): Adeega Cuntada iyo Cibitaanada (+2.11%); Adeega Hoyga (+0.70%).
- Qiima dhaca ugu weyn bishaan ayaa ahaa Ceymiska iyo Adeega Maaliyada (-0.1%); Ceymiska (-0,02%); Adeega Maaliyada (-0.15%).

Shaxda 2. heerka qeybinta ee Isbedelka boqoleyda Billaha

Dowlad Goboleed	% Isbedelka Billaha ah		
	Feb-25	Mar-25	April-25
ISKU DARKA TSB-da	-0.2%	0.4%	1.3%
01 - CUNTO IYO CABITAANNADA	-0.2%	0.4%	0.8%
02 - TUBAAKADA	-0.5%	1.4%	0.3%
03 - DHARKA IYO KABAHA	0.6%	0.8%	1.1%
04 -GURYAHA, BIYAHA, KORONTADA, GAASKA IYO SHIDAALKA KALE	0.6%	1.4%	1.8%
05 - AGABKA, AGABKA GURIGA IYO DAYACTIRKA GURIGA EE JOOGTADA AH...	-0.1%	0.0%	1.8%
06 - CAAFIMAADA	-1.7%	1.7%	0.4%
07 - GAADIIDKA	-3.1%	-0.6%	3.1%
08 - MACLUUMAADKA IYO ISGAARSIINTA	0.5%	-2.1%	0.3%
09 - MADADAALADA, CIYAARAHA IYO DHAQANKA	1.6%	0.3%	0.6%
10 - ADEEGYADA WAXBARASHADA	0.6%	2.0%	0.7%
11 - MAKHAAYADAHADA IYO ADEEGYADA HOYGA	0.9%	-0.6%	1.8%
12 - CAYMISKA IYO ADEEGYADA MAALIYADA	-0.1%	0.0%	-0.1%
13 - DARYEELKA SHAKHSIGA AH, DARYEELKA BULSHADA IYO ADEEGYADA YAR YAR...	-0.1%	0.4%	1.5%

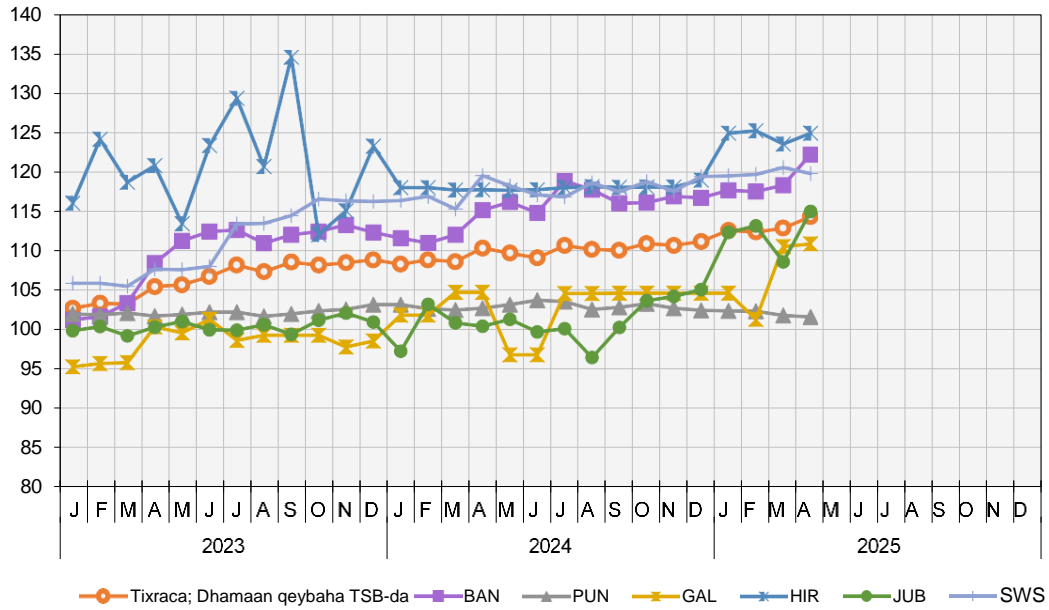
Jaantuska 3. Heerka qeybinta isbedelka boqoleyda ee billaha ah



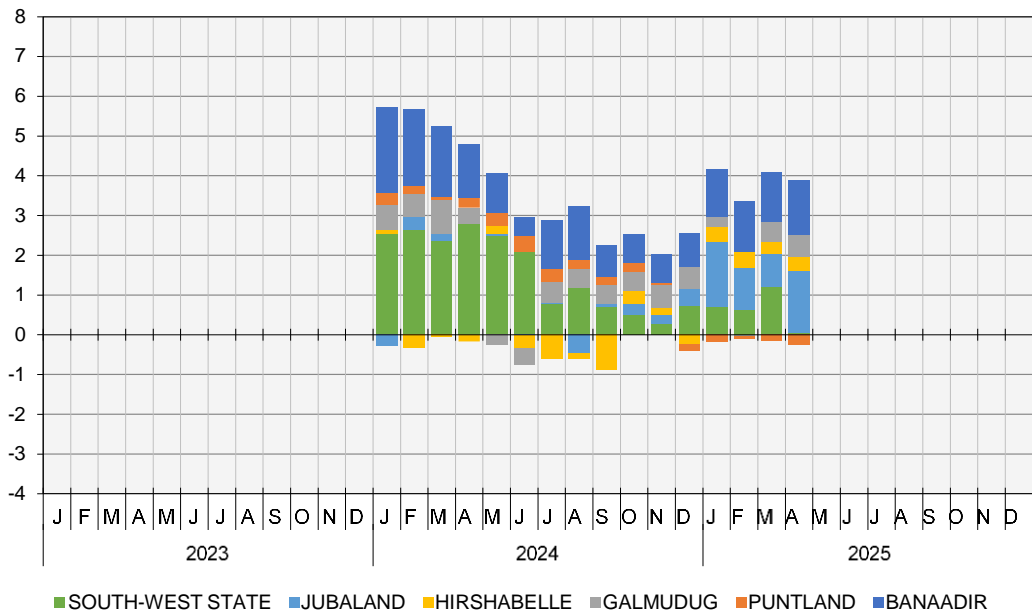
Warbixinta TSB-da Soomaaliyeed – Isbarbardhiga Dowlad goboleedyada

Jaantuska 5. Tixracyada TSB-yada ee dowlad goboleedyada

Mudada Tixraca = 2022



Jaantuska 6. Qeybaha ka qeybqaata (%) heerka sicir bararka (Dhamaan Dowlad goboleedyada)



War bixin Kooban ee Dhaqdhaqaaqa Sanadlaha ah

Muddo 12 bilood ah ilaa Abriil 2025, TSB-da, Dowlad goboleedyada dhaqdhaqaaqyada sare u kaca sameeyey waxaa ka mid ah:

- Galmudug (5.8%): Cunto Iyo Cabitaannada (+8.84%), Caafimaadka (+9.47), Daryeelka Shakhsiga ah, Daryeelka Bulshada Iyo Adeegyada Yar Yar (+4.6%), Madadaalada, Ciyaaraha Iyo Dhaqanka (+3.6%).
- Banaadir (6.1%): Gaadiidka (+32.04%), Agabka, Qalabka Guryaha ee Qoysasku sida joogta ah u isticmaalaan (+9.13%) iyo Daryeelka Shakhsiga Ah, Daryeelka Bulshada Iyo Adeegyada Yar Yar (+5.28%) waxaana hoos u dhacay Macluumaadka Iyo Isgaarsiinta (-21.08%)
- Koonfur Galbeed (5.7%): Gaadiidka (+15.5%), Dharka iyo Kabaha (7.7) iyo Cuntada iyo Cabitaanada (+6.20%) waxaana hoos u dhacay Tubaakada iyo Qaat-ka (-10.85%)
- Jubaland (5.2%): Madadaalada, Ciyaaraha Iyo Dhaqanka (+15.61%), Guryaha, Biyaha, Korontada, Gaaska Iyo Shidaalka Kale (+14.11%) Iyadoo hoos u dhac ku yimid Macluumaadka Iyo Isgaarsiinta (-33.35%).

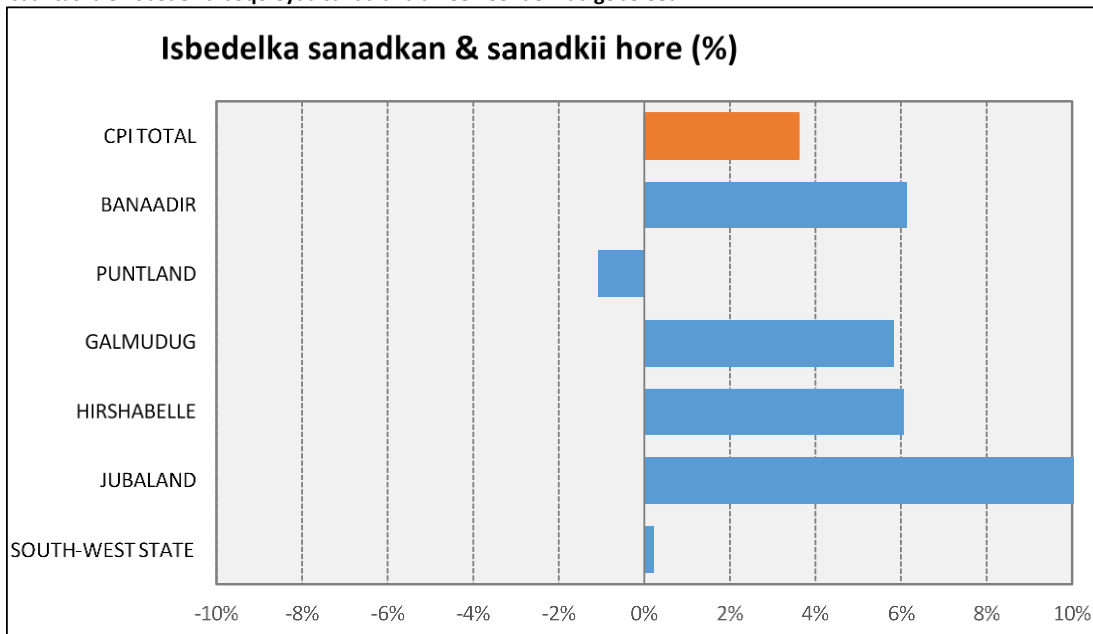
Laba iyo tobankii bilood ee la soo dhaafay ilaa Abriil 2025, Qiima dhaca ayaa ka yimid :

- Puntland (-1.1%): Cunto Iyo Cabitaannada (-3.6%)

Shaxda 5. heerka qeybinta ee Isbedelka boqoleyda sanadlaha ah.

Dowlad Goboleed	% Isbedelka Sanadlaha ah		
	Feb-25	Maar-25	Abriil-25
ISKU DARKA TSB-da	3.2%	3.9%	3.6%
BANAADIR	5.9%	5.6%	6.1%
PUNTLAND	-0.3%	-0.7%	-1.1%
GALMUDUG	-0.5%	5.5%	5.8%
HIRSHABELLE	6.1%	5.0%	6.1%
JUBALAND	9.6%	7.7%	14.5%
SOUTH-WEST STATE	2.4%	4.6%	0.2%

Jaantuska 8. Isbedelka boqoleyda sanadlaha ah ee heer dowlad goboleed



War bixin Kooban ee Dhaqdhaqaaqa Billaha ah

Intii lagu jiray bishii Abriil 2025, dhaqdhaqaaqyada qiima kororka ayaa ka yimid:

- Galmudug (0.3%): Cunto Iyo Cabitaanada (+8.79%), Caafimadka (+9.71%), Daryeelka Shakhsiga ah, Daryeelka Bulshada Iyo Adeegyada Yar Yar (+4.59%), Madadaalada, Ciyaaraha Iyo Dhaqanka (+3.63%)
- Banaadir (3.3%): Tubaakada and Qaat-ka (+0.19%).
- Koonfur Galbeed (4.8%): Cunto Iyo Cabitaanada (+6.58%) iyo Guryaha, Biyaha, Korontada, Gaaska Iyo Shidaalka Kale (+7.28%).

Shaxda 4. Isbedelka boqoleyda billaha ah ee heerka qeybinta.

Dowlad Goboleed	% Isbedelka Billaha ah		
	Feb- 25	Maarso-25	Abriil-25
ISUGEYNTA TSB-da	-0.2%	0.4%	1.3%
BANAADIR	-0.1%	0.7%	3.3%
PUNTLAND	0.0%	-0.5%	-0.2%
GALMUDUG	-3.2%	9.1%	0.3%
HIRSHABELLE	0.3%	-1.3%	1.1%
JUBALAND	0.7%	-4.1%	5.9%
SOUTH-WEST STATE	0.2%	0.7%	-0.6%

Jaantuska 7. Isbedelka boqoleyda sanadlaha ah ee heer dowlad goboleed

