



**SOMALI NATIONAL
BUREAU OF STATISTICS**
Federal Republic of Somalia

TUSAHA SICIRKA BADEECADAHA SOOMALIYA



JANAAYO 2025

Tusaha Sicirka Badeecadaha, Soomaaliya

Hordhac

Tusaha Sicirka Badeecadaha (TSB) waa tilmaame dhaqaale oo muhiim ah oo hal beegga isbeddelka guud ee isugeynta boqoleyda ee sicirka tafaariiqda ee badeecadaha iyo adeegyada ay iibsadaan qoysaska Soomaaliyeed. Waxay loo adeegsadaa qiyaasta asaasiga ah ee sicir-bararka, ayada oo ka caawineysa siyaasad-dejiyeyaasha, ganacsiyada, iyo cilmi-baarayaasha si ay u qiimeeyaan isbeddellada ascaarta si ay u qaataan go'aamo dhaqaale oo maan-gal ah.

Tan iyo Janaayo 2025, TSB-da Soomaaliya waxaa la sii daayay iyadoo la tixgelinayo hal beeg cusub oo laga soo qaatay Sahan Kharashaadka Qoysaska Soomaaliya ee 2022 (SIHBS), iyadoo lagu lifaaqaayo qaybinta cusub ee kharashka qoysaska (COICOP 2018), kana turjumeysa dhammaan Doladaha Xubnaha ka ah Dowlada Federaalka ah ee Soomaaliya. Fiiro gaar ah oo ku saabsan habraaca ayaa lagu soo bandhigi doonaa Bogga Internet-ka ee SNBS.

TSB (Tusaha Sicirka Badeecadaha) : waxaa lagu qeexay sidan:

"Cabbirka celceliska Hal beega isbedelka qiimaha tafaariiqda ee ay macaamiishu ku bixiyeen agabka iyo adeegyada mudo go'an ka dib." meelaha ugu muhimsan ee TSB-da loo adeegsan karo waxaa ka mid ah:

- Cabirka Sicir-bararka: Sicir-bararka sannadlaha ah (YoY) wuxuu isbarbar dhigayaa qiimaha hadda ee sanadkan iyo isla qiimahaas sannadkii hore, isagoo u adeegaya sida agab loogu talagalay siyaasadda lacagta iyo maaliyadda.
- Go'aan-qaadasho Dhaqaale: Waxaa isticmaala hay'adaha dawladda, ganacsiyada, iyo hay'adaha caalamiga ah si ay u hagaajiyaan mushaharka, qandaraasyada, iyo ka faa'ideyga bulshada.
- Falanqeynta Dhaqaalaha Balaaran: Waxay taageertaa qiimeynta awoodda wax iibsiga, hagaajinta qiimaha kharashka-nololeed, iyo xasiloona dhaqaalaha.

Hab Ururinta Qiimaha:

- Si joogta ah: Waxa loo sameeyaa toddobaadka ugu horreeya iyo kan saddexaad ee bil kasta.
- Deeganada laga soo uruuriyo: Muqdisho (Caasimadda), Dhammaan Dawladaha Xubinta ka ah Dawladda Federaalka (FMS).
- Ashyaada Madeecadaha: 537 shey, oo laga soo xulay Sahankii 2022 SIHBS, oo lagu kala saaray nidaamka Kala-soocidda Qaybaha Icticmaalka Qofka (COICOP) 2018 oo ka kooban 13 qaybood.

Istaatistikada Muhiimka ah

Sannadle

Laba iyo tobankii bilood ee la soo dhaafay ilaa Janaayo 2025, TSB-da waxay sare u kacday 4.0%.

- Qiima Kororka ugu badnaa 12-kii bilood ee la soo dhaafay ayaa ka yimid Gaadiidka (+12.1%), Dhar iyo Kabaha (+8.0%), Adeegyada Waxbarashada (+7.3%), Makhaayadaha iyo Adeegyada Hoyga (+6.2%), Madadaalada, Ciyaaraha iyo Dhaqanka (+4.9%), Guryaha, Biyaha, Korontada, Gaaska iyo Shidaalka Kale (+4.5%)
- Waxaa habacsanan ku timid qeyb ahaan qiima koror qeybta Macluumaadka iyo Isgaarsiinta oo gaaray (-6.1%).
- Qiima koror xooggan ayaa laga diiwaan geliyay dhammaan dawlad-goboleedyada, Jubbaland (+15.5%), Banaadir (+5.9%) iyo Hirshabeelle (+5.4%) qiima kororka ayaa u dhacay habka kala horeynta.
- Habacsanan yar ayaa ka jirtay dhinaca Puntland (-0.8%), iyadoo hoos u dhac yar oo ah uu saamayn ku yeeshay isu geynta guud.

Bille

Tusaha Sicirka Badeecadaha (TSB waxuu sare u kacay 1.3% bishan.

- Qiima kororka ugu weyn bishan waxuu ahaa Daryeelka Shaqsi ahaaneed, Daryeelka Bulshada iyo Adeegyada yar yar (+7.1%), Makhaayadaha iyo Adeegyada Hoyga (+4.9%), iyo Gaadiidka (+3.0%).
- Habacsanan yar ayaa ka jirtay dhinaca qiima kororka waxaa qeyb ka ahaa Macluumaadka iyo Isgaarsiinta (-6.3%).
- Sare u kaca ugu badan ayaa ka yimid Gobolada Jubbaland (+6.9%) iyo Hirshabeelle (+5.0%), halka hoos u dhac yar laga diiwaan geliyay Puntland (-0.1%).

Shaxda 1. TSB, Dhaqdhaqaaqyada Sanadlaha ah ee Soomaaliyeed (%)

	Isbedelka Billaha ah (%)	Isbedelka Sanadlaha ah (%)
Jan-25	1.3%	4.0%
-	-	-
-	-	-

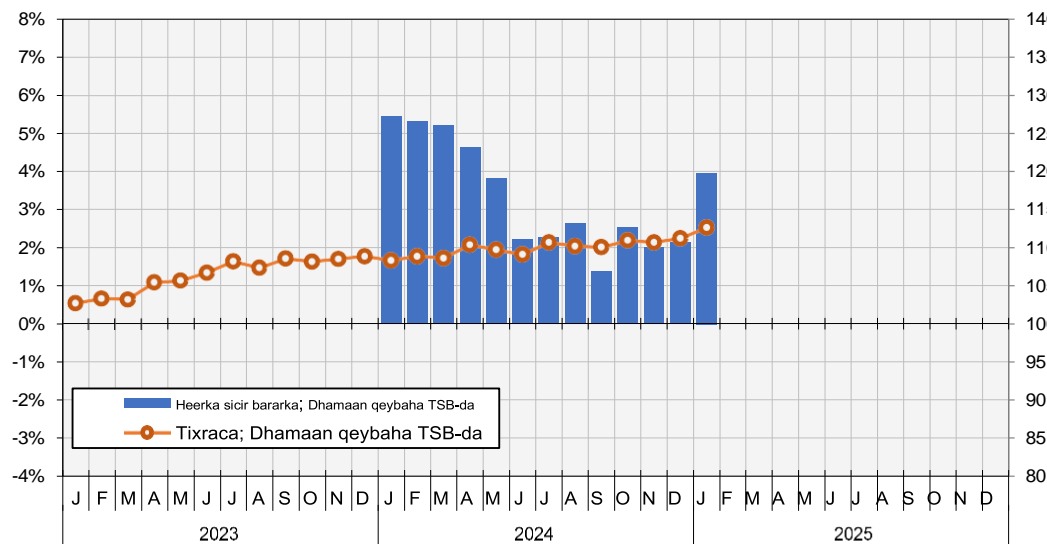
SOMALIA CPI REPORT - ALL DIVISIONS CPI

Jaantus 1. Heerka sicir bararka marka loo eego TSB-da

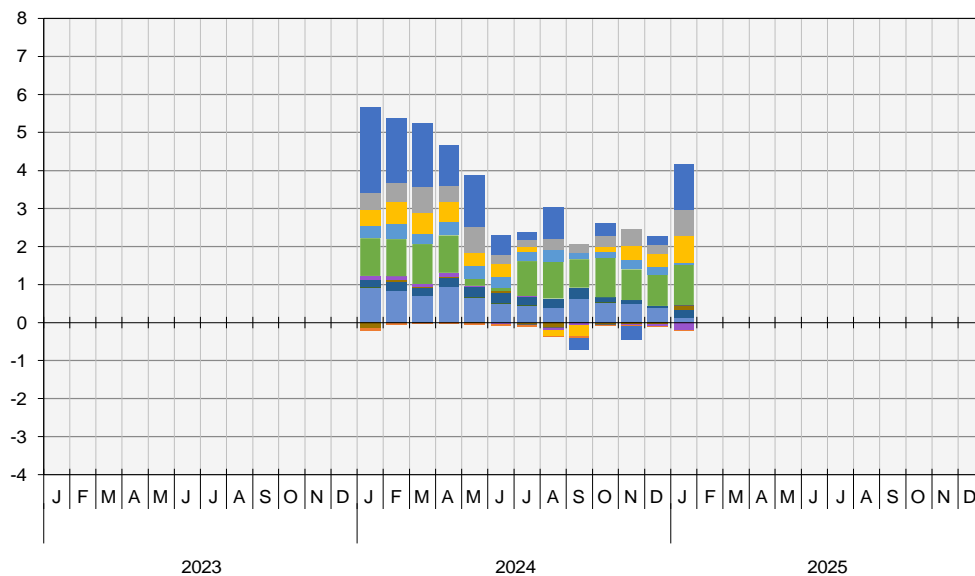
Tixraca TSB

Isbedelka boqoleyda ee 12 billood

Index Reference Period = 2022



Jaantus 2. Qeybaha ka qeybqaata (%) (Contribution by division)



- 01 - CUNTADA & CABITAANADA
- 02 - TUBAAKADDA
- 03 - DHARKA & KABAHA
- 04 - GURYAHA, BIYAHA, KORONTADA & GAASKA
- 05 - AGABKA, AGABKA GURIGA IYO DAYACTIRKA GURIGA EE JOOGTADA AH...
- 06 - CAAFIMAADKA
- 07 - GAADIIDKA
- 08 - MACLUUMAADKA IYO ISGAARINTA
- 09 - MADADAALADA, CIYAARAH IYO DHAQANKA
- 10 - ADEEGA TACLIINTA
- 11 - MAKHAAYADAH IYO ADEEGYADA HOYGA
- 12 - CAYMISKA IYO ADEEGYADA MAALIYADA
- 13 - DARYEELKA SHAKHSIGA AH, DARYEELKA BULSHADA IYO ADEEGYADA YAR YAR

War bixin Kooban ee Dhaqdhaqaaqa Sannadlaha ah

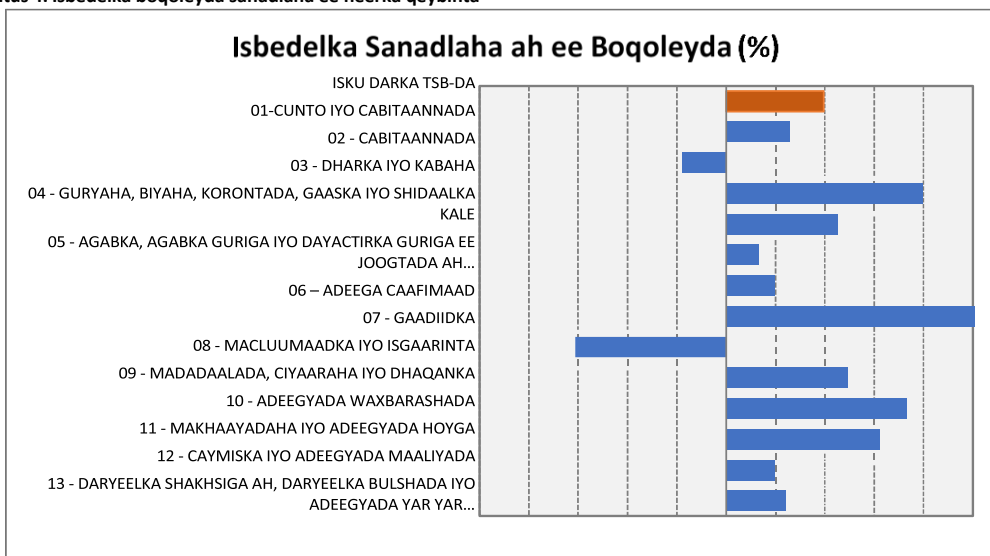
Muddo 12 bilood ah ilaa Janaayo 2025, TSB-da ayaa sare u kacay 4.0%. qiima kororka ugu weyn ee sanadlaha ayaa laga dareemay:

- Gaadiidka (+12.1%): sare u kacii ugu badnaa waxaa uu ka timid Adeegyada Rakaabka Gaadiidka (+14.2%).
- Dhar iyo Kabaha (+8.0%): qiima koror ugu weyn ayaa sameyey Dharka ragga ah (+9.1%).
- Makhaayadaha iyo Adeegyada Hoyga (+6.2%): sare u kaca ugu badan ayaa ka timid Adeegyada Hoyga (+7.4%).
- Adeegyada Waxbarashada (+7.3%): qiima koror ugu weyn ayaa sameyey Waxbarashada Carruurta yaryar (+13.0%).
- Madadaalada, Isboortiga iyo Dhaqanka (+4.9%): sare u kaca ugu badan ayaa ka timid Agabka waqtiga dheer ee Madadaalada (+16.6%).

Table 3. Division level annual percentage change (Isbedelka boqoleyda sanadlaha ee heerka qeybinta)

Qeybin	%- Isbedelka Sanadlaha ah
	Jan-25
ISU GEYNTA TSB-da	4.0%
01-CUNTO IYO CABITAANNADA	2.6%
02 - TUBAAKADA	-1.8%
03 - DHARKA IYO KABAHA	8.0%
04 - GURYAHA, BIYAHA, KORONTADA, GAASKA IYO SHIDAALKA KALE	4.5%
05 - AGABKA, AGABKA GURIGA IYO DAYACTIRKA GURIGA EE JOOGTADA AH...	1.3%
06 – ADEEGA CAAFIMAADA	2.0%
07 - GAADIIDKA	12.1%
08 - MACLUUMAADKA IYO ISGAARINTA	-6.1%
09 - MADADAALADA, CIYAARAHA IYO DHAQANKA	4.9%
10 - ADEEGYADA WAXBARASHADA	7.3%
11 - MAKHAAYADAHA IYO ADEEGYADA HOYGA	6.2%
12 - CAYMISKA IYO ADEEGYADA MAALIYADA	2.0%
13 - DARYEELKA SHAKHSIGA AH, DARYEELKA BULSHADA IYO ADEEGYADA YAR YAR...	2.4%

Jaantus 4. Isbedelka boqoleyda sanadlaha ee heerka qeybinta



War bixin Kooban ee Dhaqdhaqaaqa Billaha ah

- TSB-da waxay bishan kor u kacay 1.3%. Dhaq dhaqaaqa qiima kororka ugu badan ee ayaa ka yimid:
- Maqaayadaha iyo Adeegyada Hoyga (+4.9%): qiima koror ugu weyn ayaa sameyey Adeegyada Cuntada iyo Cabitaanka (+5.2%).
- Dharka iyo Kabaha (+2.8%): Sare u kaca ugu badan ayaa ka timid Kabaha (+3.9%).
- Daryeelka Shakhsi ahaaneed, Daryeelka Bulshada iyo adeegyada yar yar (+7.1%): qiima koror ayaa ka yimid Daryeelka Shakhsi ahaaneed (+7.6%).

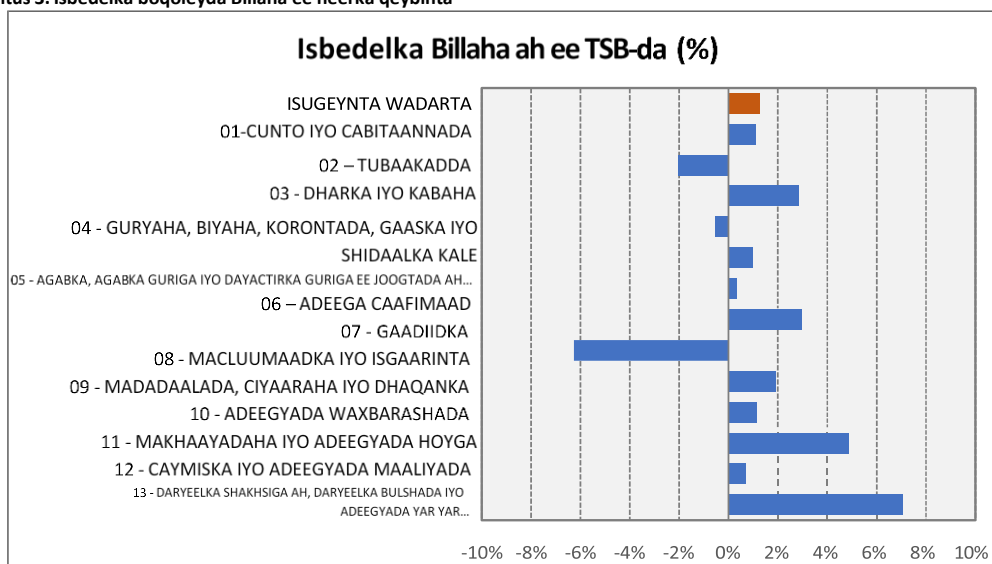
Hoos u dhacyada ugu waaweyn waxaa laga dareemay:

- Macluumadka iyo Isgaarsiinta (-2.0%): Hoos u dhaca ugu weyn wuxuu ka yimid Adeegyada Macluumadka iyo Isgaarsiinta (-3.2%), kuwaas oo ka kooban adeegyada isgaarsiinta gacanta, internet-ka (internet cafes), iyo adeegyada internet-ka guud ahaan.

Shaxda 2. Isbedelka boqoleyda Billaha ee heerka qeybinta

Qeybinta	%-Isbedelka Sanadlah ah
	Jan-25
Isugeynta TSB-da	1.3%
01-CUNTO IYO CABITAANNADA	1.1%
02 - TUBAAKADDA	-2.0%
03 - DHARKA IYO KABAHA	2.8%
04 - GURYAHA, BIYAHA, KORONTADA, GAASKA IYO SHIDAALKA KALE	-0.6%
05 - AGABKA, AGABKA GURIGA IYO DAYACTIRKA GURIGA EE JOOGTADA AH...	1.0%
06 – ADEEGA CAAFIMAADA	0.3%
07 - GAADIIDKA	3.0%
08 - MACLUUMAADKA IYO ISGAARINTA	-6.3%
09 - MADADAALADA, CIYAARAHA IYO DHAQANKA	1.9%
10 - ADEEGYADA WAXBARASHADA	1.1%
11 - MAKHAAYADAHA IYO ADEEGYADA HOYGA	4.9%
12 - CAYMISKA IYO ADEEGYADA MAALIYADA	0.7%
13 - DARYEELKA SHAKHSIGA AH, DARYEELKA BULSHADA IYO ADEEGYADA YAR YAR...	7.1%

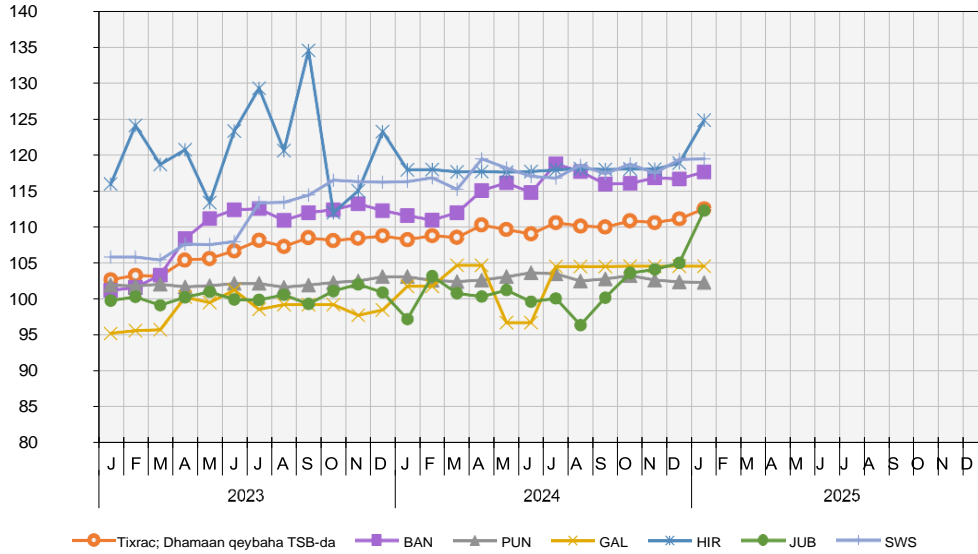
Jaantus 3. Isbedelka boqoleyda Billaha ee heerka qeybinta



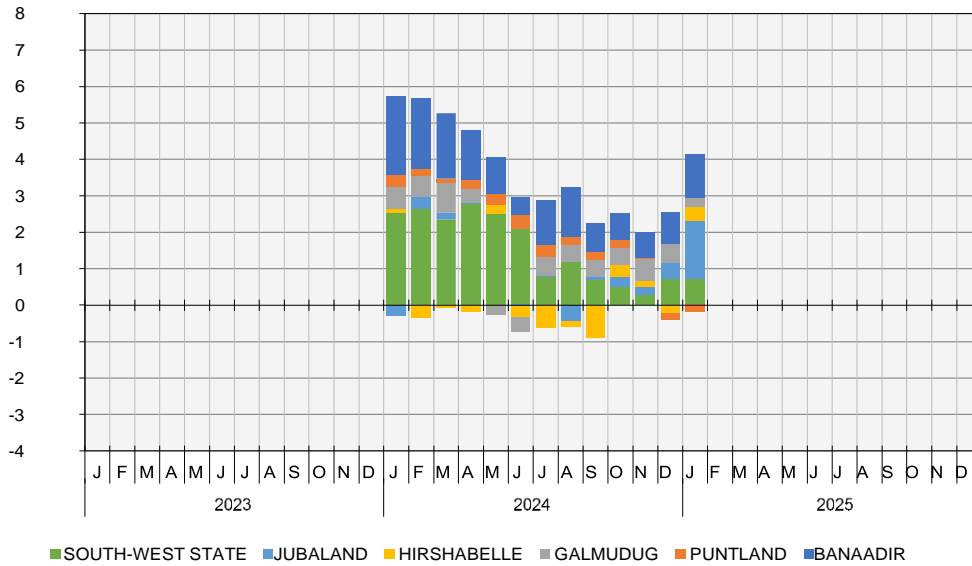
Warbixinta TSB-da Soomaaliyeed – Isbarbardhiga Dowlad goboleedyada

Jaantus 5. Min Dowlad goboleed iyo tixraaca TSB-da

Raad raaca waqtigii tixraaca = 2022



Jaantus 6. Qeybaha ka qeybqaato (%) heerka sicir bararka (heer Dowlad Goboleed)



War bixin Kooban ee Dhaqdhaqaaqa Sanadlaha ah

Muddo 12 bilood ah ilaa Janaayo 2025, TSB-da, Dowlad goboleedyada dhaqdhaqaaqyada sare u kaca sameeyey waxaa ka mid ah:

- Jubaland (+15.5%): Guryaha, Biyaha, Korontada, Gaaska iyo Shidaalka kale (+48.1%), Dharka iyo Kabaha (+27.3%), Madadaalada, Cayaaraha iyo Dhaqanka (+27.2%), iyo Daryeelka shaqsiga, Daryeel bulshada iyo Adeegyada yar yar (+27.8%). Waxa habacsanan laga dareemay qaybta Warbixinta & Isgaarsiinta(-13.9%) iyo Adeegyada waxbarashada (-9.8%).
- Banaadir (+5.4%): Gaadiidka (+33.1%), Caafimaadka (+8.0%), Dharka iyo Kabaha (+9.7%) iyo Daryeelka shaqsiga, Daryeelka bulshada iyo Adeegyada yar yar ee guud (+9.7%).
- Galmudug (+2.7%): Warbixinta iyo Isgaarsiinta (+8.6%), Caafimaadka (+7.2%), iyo Cuntada iyo Cabitaanada (+5.2%). Waxa habacsanan laga dareemay Daryeelka shaqsiga, Daryeel bulshada (-8.7%) iyo agabka, agabka guriga iyo dayactirka guriga ee joogtada ah (-3.1%).
- Hirshabelle (+5.9%): Adeegga Maqaayada iyo Hoyga (+38.3%), Adeegyada Waxbarashada (+24.7%) iyo Dharka iyo Kabaha (+14.0%) habacsananta caafimaadka (-10.8%) iyo Daryeelka Shakhsi ahaaneed, Daryeelka Bulshada, iyo Adeegyada yar yar (-15.3%)
- Gobolka Koonfur-Galbeed (+2.7%): Adeegyada Waxbarashada (+93.7%), Madadaalada, Ciyaaraha iyo Dhaqanka (+23.9%) iyo Gaadiidka (+16.5%) habacsananta Tubaakada (-10.8%) iyo Caafimaadka (-6.7%).

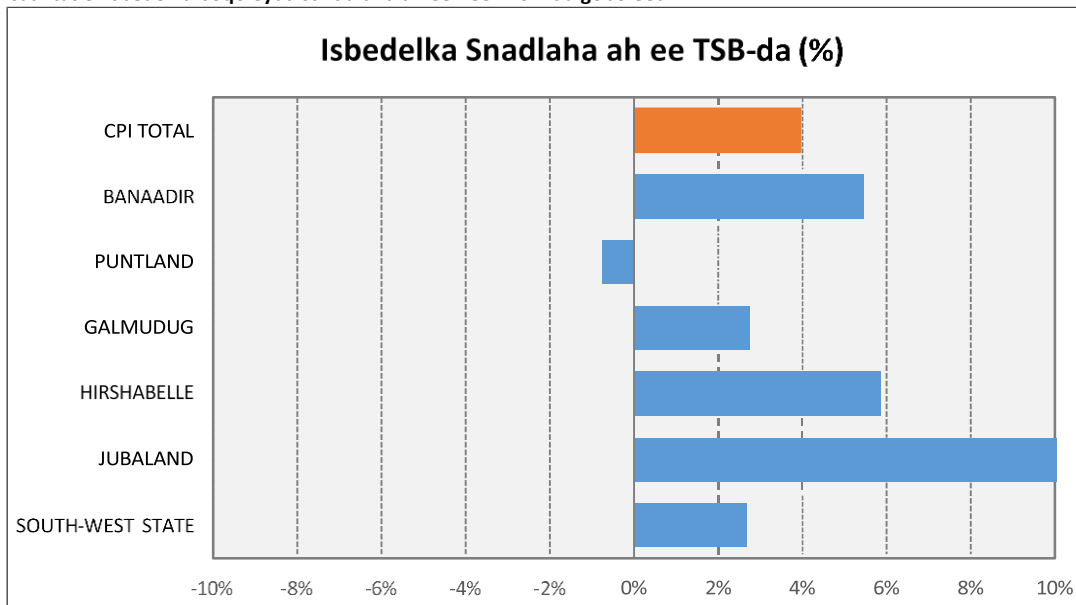
Laba iyo tobankii bilood ee la soo dhaafay ilaa Janaayo 2025, Qiima dhac ku yimid ayaa ka yimid:

Puntland (-0.8%): cuntad iyo Cabitaannada caadiga (-2.3%), Daryeelka Shakhsi ahaaneed (-2.1%) iyo Guryeynta, Biyaha, Gaaska iyo Shidaalka kale (-1.5%), Warfaafinta iyo Isgaarsiinta (-1.4%) iyo Gaadiidka (-1.3%) habacsananta Maqaayada iyo Hoyga (+9.6%), Dharka iyo kabaha (+5.0%). Tubaakada (+4.9%) iyo Caafimaadka (+3.1%).

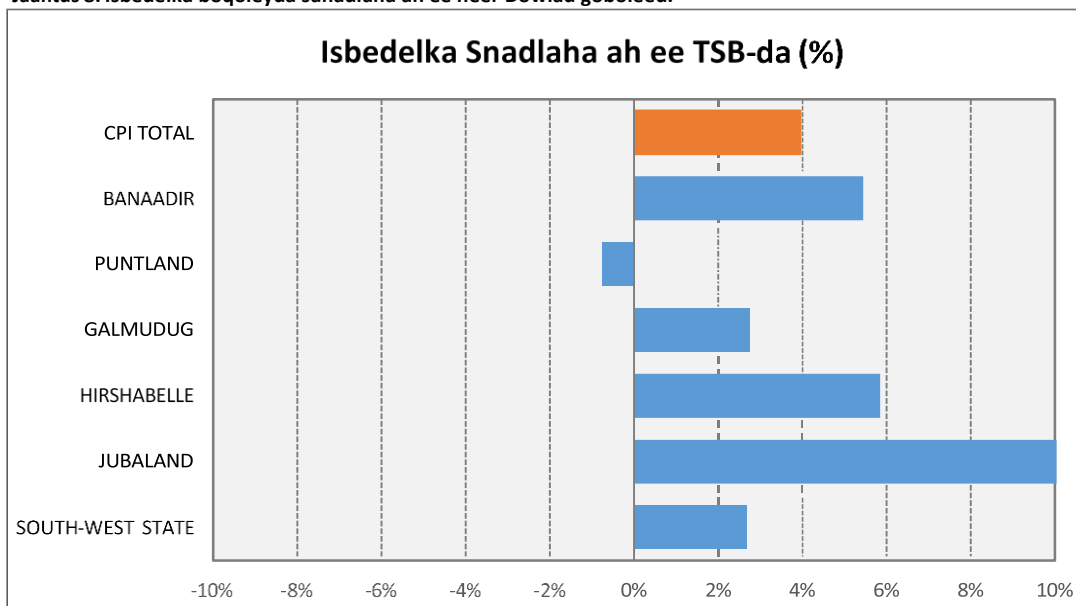
Shaxda 5. Isbedelka boqoleyda sanadlaha ah ee heerka qeybinta.

Dowlad goboleed	%-Isbedelka Billaha ah Jan-25
Isugeynta TSB-da	4.0%
BANAADIR	5.4%
PUNTLAND	-0.8%
GALMUDUG	2.7%
HIRSHABELLE	5.9%
JUBALAND	15.5%
SOUTH-WEST STATE	2.7%

Jaantus 8. Isbedelka boqoleyda sanadlaha ah ee heer Dowlad goboleed.



Jaantus 8. Isbedelka boqoleyda sanadlaha ah ee heer Dowlad goboleed.



Intii lagu jiray bishii Janaayo 2025, dhaqdhaqaaqyada qiima kororka ayaa ka yimid:

- Jubaland (+6.9%): Daryeelka Shakhsi ahaaneed, Daryeelka Bulshada iyo Adeeg yada yar yar (+12.3%), Agabyada Guryaha iyo Dayactirka Guriga (+9.7%) iyo Cuntada (+7.2%).
- Banaadir (+0.8%): Adeegyada Waxbarashada (+7.2%), Daryeelka Shakhsi ahaaneed, adeegyada yar yar ee kala duwan (+7.1%) iyo Madadaalada, Ciyaaraha iyo Dhaqanka (+6.4%) waxaan hoos u dhacay Warfaafinta iyo Isgaarsiinta (-28.7%).
- Galmudug (+0.0%): Dhamaan qeybaha kala duwan ee TSB-da ayaan wax dhaqdhaqaaq ah sameyn.
- Hirshabelle (+5.0%): Maqaayadaha iyo Adeegyada Hoyga (+38.3%), Adeegyada Waxbarashada (+24.7%), Dharka iyo Kabaha (+14.0%) iyo Cuntada (+5.9%) habacsananta caafimaad (-10.8%) iyo Daryeelka Shaqsiyeed, Daryeel bulshada iyo Adeegyada yar yar (-15.3%).
- Gobolka Koonfur-Galbeed (+0.1%): Madadaalada, Isboortiga iyo Dhaqanka (+23.8%) iyo Gaadiidka (+16.5%) iyo Caafimaadka (+6.6%).

Bishii Janaayo 2025, hoos u dhacyo ayaa laga diiwaangeliyay Puntland (-0.1%): Qaybaha ugu waaweyn dhammaantood waxay muujiyeen dhaqdhaqaaq yar oo togan ama taban ah.

Shaxda 4. Isbedelka boqoleyda billaha ah ee heerka qeybinta.

Dowlad goboleed	%-Isbedelka Billaha ah
	Jan-25
Isugeynta TSB-da	1.3%
BANAADIR	0.8%
PUNTLAND	-0.1%
GALMUDUG	0.0%
HIRSHABELLE	5.0%
JUBALAND	6.9%
SOUTH-WEST STATE	0.1%

Jantus 7. Isbedelka boqoleyda sanadlaha ah ee heer Dowlad goboleed.

