



**SOMALI NATIONAL  
BUREAU OF STATISTICS**  
Federal Republic of Somalia

# TUSAHA SICIRKA BADEECADAHA SOOMALIYA



## JUUN 2025

# Tusaha Sicirka Badeecadaha, Soomaaliya

## Hordhac

Tusaha Sicirka Badeecadaha (TSB) waa tilmaame dhaqaale oo muhiim ah oo hal beeg u ah isbeddelka guud ee isugeynta boqoleyda ee sicirka tafaariiqda ee badeecadaha iyo adeegyada ay iibsadaan qoysaska Soomaaliyeed. Waxay u adeegtaa sida qiyaasta asaasiga ah ee sicir bararka, ayada oo awood u siineysa siyaasad-dejiyayaasha, ganacsiyada, iyo cilmi-baarayaasha si ay u qiimeeyaan isbeddellada ascaarta si ay u sameeyaan go'aamo dhaqaale oo maan-gal ah. Tan iyo Janaayo 2025, TSB-da Soomaaliya ayaa la sii daayay iyadoo la tixgelinayo hal beeg cusub oo laga soo qaatay Sahan Kharashaadka Qoysaska Soomaaliya ee 2022 (SIHBS), iyadoo lagu lifaaqaayo kalasaarida cusub ee kharashka qoysaska (COICOP 2018), kana turjumeysa dhammaan Doladaha Xubnaha ka ah Dowlada Federaalka ah ee Soomaaliya. qoraal ku saabsan habraaca ayaa lagu soo bandhigi doonaa Bogga Internet-ka ee SNBS.

**Tusaha Sicirka Badeecadaha (TSB ) waxaa lagu qeexay sidan:**

- "Cabbirka celceliska Hal beega isbedelka qiimaha tafaariiqda ee ay macaamiishu ku bixiyeen agabka iyo adeegyada mudo cayiman." meelaha ugu muhimsan ee TSB-da loo adeegsan karo waxaa ka mid ah:
- Cabirka Sicir-bararka: Sicir-bararka sannadlaha ah (YoY) wuxuu isbarbar dhigayaa qiimaha hadda ee sanadkan iyo isla qiimahaas sannadkii hore, isagoo u adeegaya sida agab loogu talagalay siyaasadda lacagta iyo maaliyadda.
- Go'aan-qaadasho Dhaqaale: Waxaa isticmaala hay'adaha dawladda, ganacsiyada, iyo hay'adaha caalamiga ah si ay ugu jaan gooyaan mushaharka, qandaraasyada, iyo ka faa'iidooyinka bulshada.
- Falanqeynta Dhaqaalaha Balaaran: Waxay taageertaa qiimeynta awoodda wax iibsiga, hagaajinta qiimaha kharashka-nololeed, iyo xasiloonida dhaqaalaha.

### **Hab Ururinta Qiimaha:**

- Si joogta ah: Waxa loo sameeyaa toddobaadka ugu horreeya iyo kan saddexaad ee bil kasta.
- Deeganada laga soo ururiyo: Muqdisho (Caasimadda), Dhammaan Dawladaha Xubnaha ka ah Dawladda Federaalka (FMS).
- Ashyaada ama badeecadaha: 537 shey, oo laga soo xulay Sahankii 2022 SIHBS, oo lagu kala saaray nidaamka Kala-soocidda Qaybaha Istimcaalka Qofka (COICOP) 2018 oo ka kooban 13 qaybood.

### **Istaatistikada Muhiimka ah**

#### **Sannadle**

- Laba iyo tobankii bilood ee la soo dhaafay ilaa Juun 2025, TSB-da waxay sare u kacday 2.0%.
- Qiimaha kororka ugu weyn ee laba iyo tobankii biloodayaa ahaa Daryeelka Shakhsi ahaaneed, Ilaalinta Bulshada iyo Alaabaha iyo Adeegyada yar yar (+8.4%), Gaadiidka (+7.3%), Caafimaadka, (+5.3%), Madadaalada, Ciyaaraha iyo Dhaqanka (+5.2%).
- Qaybaha hoos u dhacay ayaa ahaa Warfaafinta iyo Isgaarsiinta (-5.6%), Tubaakada iyo Qaadka (-4.0%).
- Qiimaha kororka ayaa saameeyey dowlad goboleedyada intooda badan bishii Juun, Jubaland (+3.3%), Hirshabeele (+1.6%), Koonfur-Galbeed (+5.8%), Galmudug (+5.8%), Banadir (+4.1%), Putland (-5.5%) ayaa yeeshay saameyn hoos dhac sababo la xariira miisaankiisa weyn ee billaha ah.

#### **Bille**

Tusaha Sicirka Badeecadaha (TSB) waxuu hoos udhacay -2.6% bishan.

- Qiimaha kororka ugu weyn ee bishan ayaa ahaa Daryeelka Shakhsi ahaaneed, Ilaalinta Bulshada iyo Alaabooyinka iyo Adeegyada yar yar (+1.0%), Warfaafinta iyo Isgaarsiinta (+0.9%).
- Qaybaha hoos u dhacay ayaa ahaa Cuntada iyo Cabbitaannada (-4.0%) iyo Guriyeynta, Korontada iyo Biyaha (-2.5%).
- Majirin qiimo koror ka yimid dowlad goboleedyada balse hoos u dhac weyn ayaa jiray ayadoo Hirshabeele iyo Jubaland ay diwaangaliyeen hoos gaaryo -6.0% and -3.8% sida ay isugu xigaan.

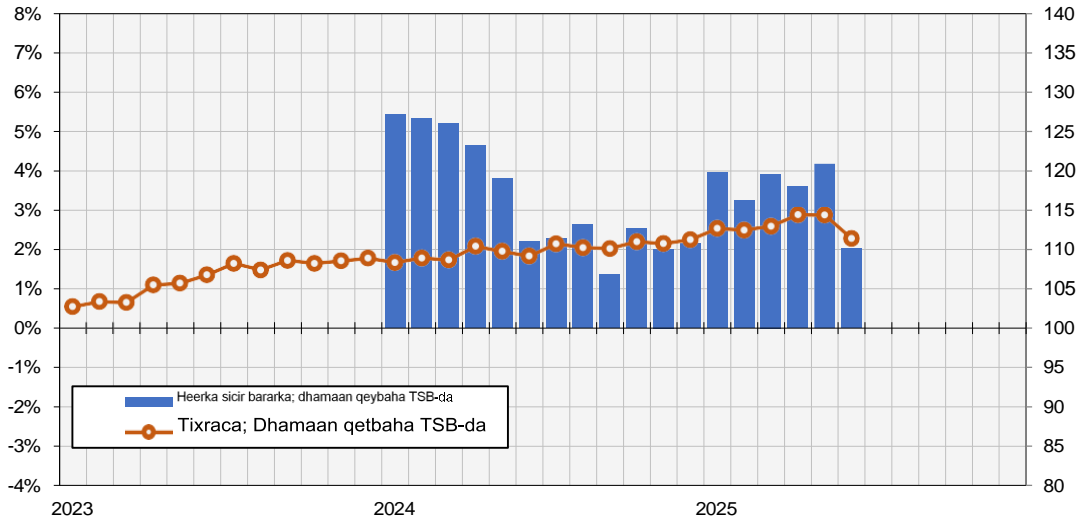
#### **Shaxda 1. TSB, Dhaqdhaqaaqyada Sanadlaha & Billaha ah ee Soomaaliyeed (%)**

	Isbedalka Billah ah (%)	Isbedalka Sanadlah ah (%)
Juun-25	-2.6%	2.0%
Maajo-25	0.0%	4.2%
Abriil-25	1.3%	3.6%

Warbixinta TSB-da ee Soomaaliyeed – Dhamaan qeybaha TSB-da

Jaaantuska 1. Heerka sicir bararka marka loo eego TSB-da labadalka boqoeyda ee 12 bilood

Tixraca TSB-da  
Mudada tixraca = 2022



## War bixin Kooban ee Dhaqdhaqaaqa Sannadlaha ah

Muddo 12 bilood ah ilaa Juun 2025, TSB-da ayaa sare u kacay 2.0%.

Qiimo kororka ugu weyn ee Laba iyo tobankii bilood ee la soo dhaafay ayaa ahaa:

- Daryeelka Shakhsi ahaaneed, Ilaalinta Bulshada iyo Alaabooyinka iyo Adeegyada yar yar (+8.4%): daryeelkashaqsiga (+9.02%)

- Gaadiidka (+7.3%): Adeegyada Rakaabka Gaadiidka (+8.37%)
- Caafimaadka (+5.3%): adeega daryeelka bukaan jiiifka (+30.21%)
- Madadaalada, ciyaarta iyo dhaqanka (+5.2%): alaabta dhaqanka (+9.23%)

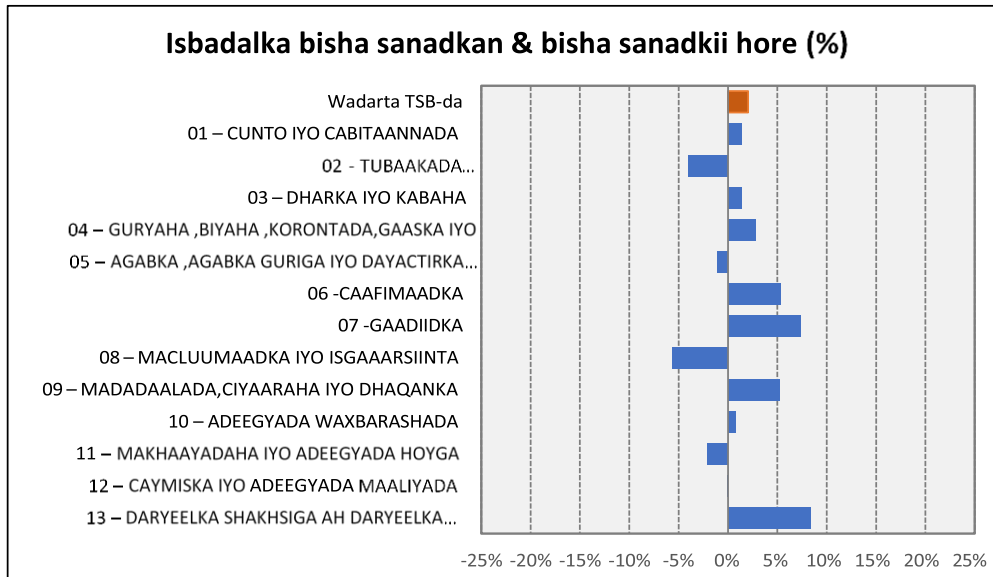
Hoos u dhaca ugu weyn Laba iyo tobankii bilood ee la soo dhaafay ayaa ahaa:

- Macluumaadka iyo Isgaarsiinta (-5.6%): Qalabka (-9.66%); Adeegyada (-3.66%)
- Tubaakada iyo Qaadka (-4.0%): Qaadka (-4.80%) tubaakada (+0.16%)

### Shaxda 2. boqolkiiba isbeddelka heerka qaybta sannadlaha ah

Qeybinta	isbeddel sannadle ah		
	Abriil-25	Maajo-25	Juu-25
GUUD EE CPI	3.6%	4.2%	2.0%
01-CUNNO IYO CABBITAANNADA AAN KHAMRIGA AHAYN	2.0%	4.0%	1.4%
02 - TUBAAKADA	-2.1%	-1.9%	-4.0%
03 - DHARKA IYO KABAHA	5.0%	4.8%	1.3%
04 - GURYAHA, BIYAHA, KORONTADA, GAASKA IYO SHIDAALKA KALE	7.2%	6.4%	2.8%
05 - AGABKA, QALABKA QOYSASKA IYO DAYACTIRKA GURYAHA EE JOOGATADA	1.4%	1.5%	-1.1%
06 - CAAFIMAAD	2.3%	0.0%	5.3%
07 - GAADIIDKA	11.1%	8.9%	7.3%
08 - MACLUUMAADKA IYO ISGAARINTA	-7.6%	-7.3%	-5.6%
09 - MADADAALADA, CIYAARAHA IYO DHAQANKA	4.1%	7.6%	5.2%
10 - ADEEGYADA WAXBARASHADA	2.0%	0.4%	0.7%
11 - MAKHAAYADAHADA IYO ADEEGYADA HOYGA	7.5%	-1.8%	-2.1%
12 - CAYMISKA IYO ADEEGYADA MAALIYADA	0.8%	0.9%	-0.1%
13 - DARYEELKA SHAKHSIGA AH, ILAALINTA BULSHADA IYO ALAAB KALA DUWAN	1.4%	6.6%	8.4%

### Jaantuska 3. Heerka qeybinta isbadalka boqoleyda ee sanadlaha ah



## Warbixin Kooban ee Dhaqdhaqaaqa Billaha ah

TSB-da ayaa bishan hoos u dhacday -2.6%.

Sare u kaca ugu balaaran ayaa ka yimid:

Daryeelka Shakhsi ahaaneed, Ilaalinta Bulshada iyo Alaabooyinka iyo Adeegyada yar yar (+1.0%): Daryeelka Shakhsi ahaaneed

SAHA SICIRKA BADEECADAHA

(0.79%), Saamaynta Shakhsi ahaaneed ee Kale (+1.04%).

• Macluumaadka iyo Isgaarsiinta (+0.9%): Qalabka (+3.15%); Adeegyada (-0.17%)

Hoos u dhacii ugu badnaa bishaan ayaa ahaa:

• Cuntada iyo Cabitaanada (-4.0%): Cuntada (-4.20); ayadoo hoos u dhac yar ku yimid Cabitaanada (+1.28%).

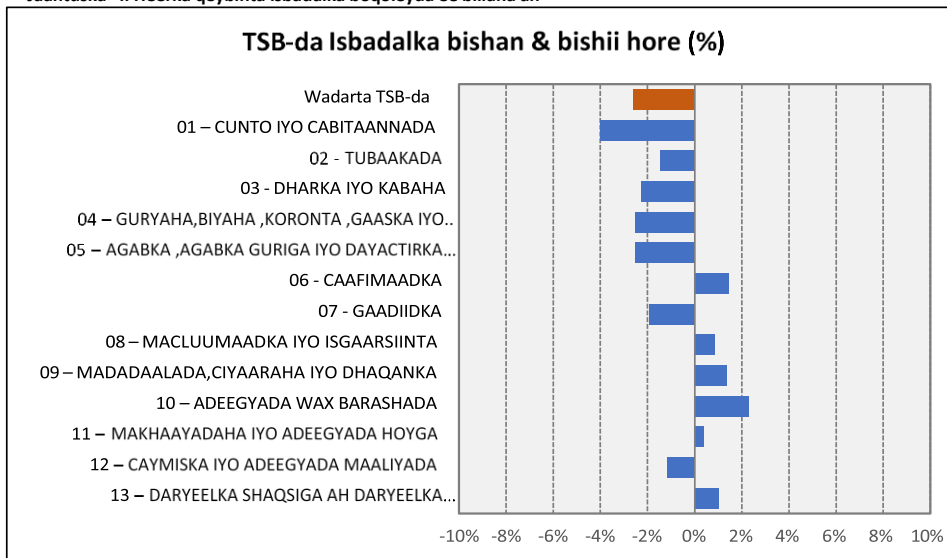
hoos u dhaca ugu weyn bishaan ayaa ahaa:

Madadaalada, Ciyaaraha iyo Dhaqanka---Cuntada iyo cabitaanada (-4.0%): cuntada (-4.20%); hoos u dhac cabitaadana ah (+1.28).

Shaxda 3. heerka qaybta boqolkiiba isbeddelka bishii

Qeybinta	%Isbedelka Bilaha		
	Abriil-25	Maajo-25	Juu-25
Wadarta TSB-da	1.3%	0.0%	-2.6%
01-CUNNO IYO CABBITAANNADA AAN KHAMRIGA AHAYN	0.8%	1.2%	-4.0%
02 - CABBITAANNADA KHAMRIGA, TUBAAKADA IYO MAANDORIYAHA	0.3%	-0.4%	-1.5%
03 - DHARKA IYO KABAHA	1.1%	-1.3%	-2.3%
04 - GURYAHA, BIYAHA, KORONTADA, GAASKA IYO SHIDAALKA KALE	1.8%	-0.4%	-2.5%
05 - ALAABTA, QALABKA GURIGA IYO GURIGA CAADIGA AH...	1.8%	0.2%	-2.5%
06 - CAAFIMAAD	0.4%	0.4%	1.4%
07 - GAADIIDKA	3.1%	-2.1%	-1.9%
08 - MACLUUMAADKA IYO ISGAARINTA	0.3%	-0.1%	0.9%
09 - MADADAALADA, CIYAARAHA IYO DHAQANKA	0.6%	0.4%	1.3%
10 - ADEEGYADA WAXBARASHADA	0.7%	-2.6%	2.3%
11 - MAKHAAYADAHADA IYO ADEEGYADA HOYGA	1.8%	-7.5%	0.4%
12 - CAYMISKA IYO ADEEGYADA MAALIYADA	-0.1%	0.3%	-1.2%
13 - DARYEEL GAAR AH, ILAALINTA BULSHEED IYO KALA DUWANAANSHO...	1.5%	0.6%	1.0%

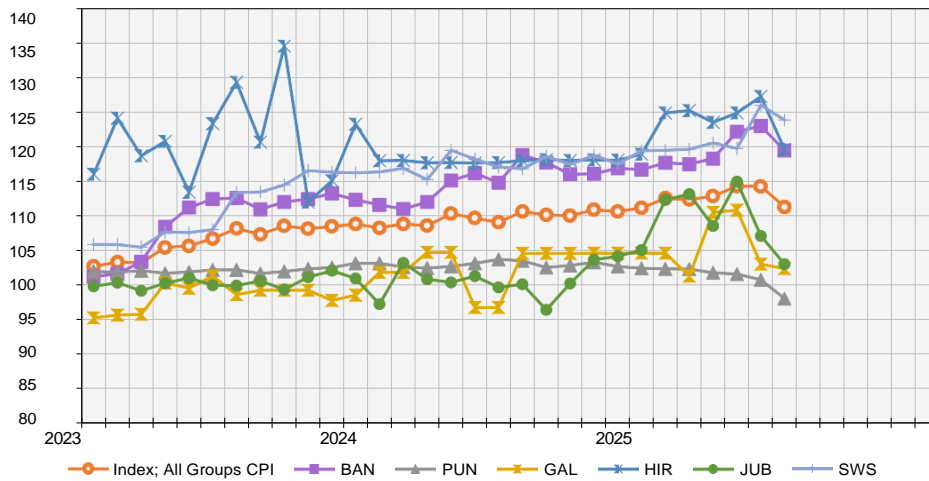
Jaantuska 4. Heerka qeybinta isbadalka boqoleyda ee billaha ah



Warbixinta TSB-da Soomaaliyeed – Isbarbardhiga Dowlad goboleedyada.

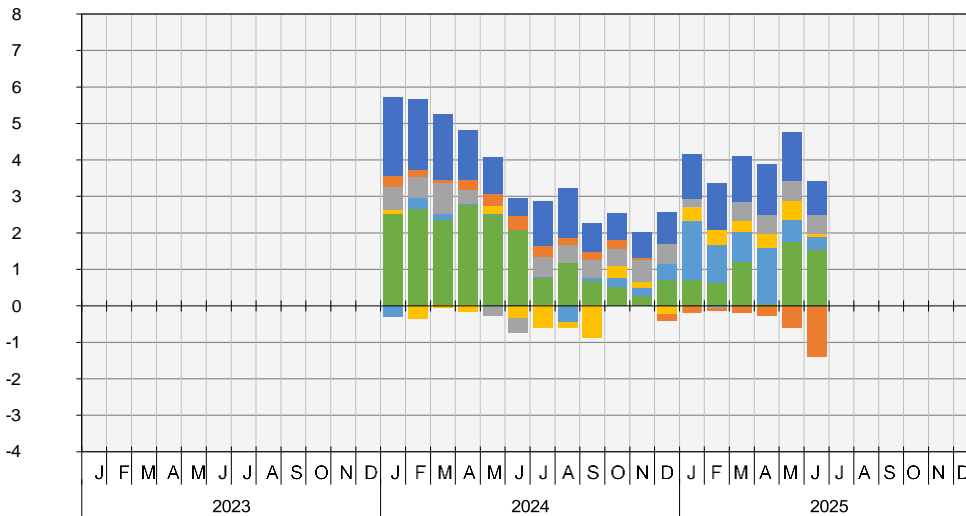
**Jaantuska 5. Tixraacyada TSB-da ee dowlad goboleedyada**

Mudada tixraaca = 2022



(a) Tixraca Puntland waa la qiyaasay

**Jaantuska 6. Qeybaha ka qeybqaata (%) Heerka sicir bararka (qeybinta heer dowlad goboleed) (a)**



(a) Tixraca Puntland waa la qiyaasay

**War bixin Kooban ee Dhaqdhaqaaqa Sanadlaha ah**

Mudada 12 bilood ee la soo dhaafay ilaa maajo 2025 TSB-da, dhaqdhaqaaqyo sare u kac ah ayaa ka yimid

- Jubaland (+3.3%): Daryeelka Shakhsi ahaaneed, Ilaalinta Bulshada iyo Adeegayada yar yar (+31.26%), Muqaayadaha iyo hoyga (+21.57%), Caafimaadka (+17.44%), waxan hoos u dhacay qiimaha Gaadiidka (-16.72%).
- Hirshabelle (+1.6%): Muqaayadaha iyo adeegyad hoyga (+38.28)
- Koofur galbeed (+5.8%), Madadaalada, ciyaarta iyo dhaqanka (+29.54%) iyo Gaadiidka(+21.07%)
- Galmudug (+5.8%): Cunnada iyo Cabitaanada aan Khamriga ahayn (+11.12%), Caafimaadka (+10.85%), Daryeel shaqsiga, Ilaalinta bulshada iyo Adeegyada yar yar (+18.63%), Madadaalada, Ciyaaraha iyo Dhaqanka (+3.63%)
- Banaadir (+4.1%): Gaadiidka (+20.75%), Agabka, Qalabka Guriga ay qoysasu sida Joogtada ah u isticmaalaan (+7.61%), Dharka iyo Kabaha (+8.98%) Daryeelka Shakhsi ahaaneed, Ilaalinta Bulshada iyo Adeegayada yar yar (+4.13%) waxaana hoos u dhacay Warfaafinta iyo Isgaarsiinta (-21.08%)
- Hoos u dhac ayaa ka yimid Putland bishii Juun: Puntland (-5.5%), Cunnada iyo Cabitaanada (-3.6%)

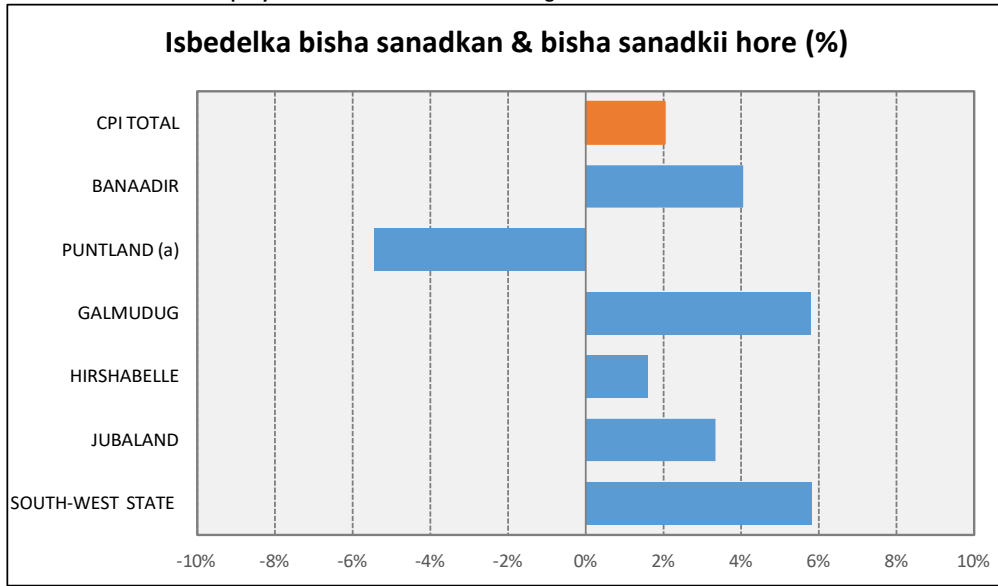
**Shaxda 4. Boqolkiiba isbeddelka heerka gobolka**

SAHA SICIRKA BADEECADAHA

Gobolka	Idel sannadke ah		
	Abriil-25	Maajoil-25	Juun-25
guud ee CPI	3.6%	4.2%	2.0%
BANAADIR	6.1%	5.9%	4.1%
PUNTLAND	-1.1%	-2.3%	-5.5%
GALMUDUG	5.8%	6.4%	5.8%
HIRSHABELLE	6.1%	8.2%	1.6%
JUBALAND	14.5%	5.7%	3.3%
KOONFUR-GALBEED	0.2%	6.6%	5.8%

(a) Tixraca Puntland waa la qiyaasay

Jaantuska 7. Isbadalka boqoleyda sanadlaha ah ee heer dowlad goboleed



(a) Tixraca Puntland waa la qiyaasay

**War bixin Kooban ee Dhaqdhaqaaqa Billaha ah**

Intii lagu jiray bishii Juun 2025, dhaqdhaqaaqyo hoos u dhac ah ayaa ka yimid:

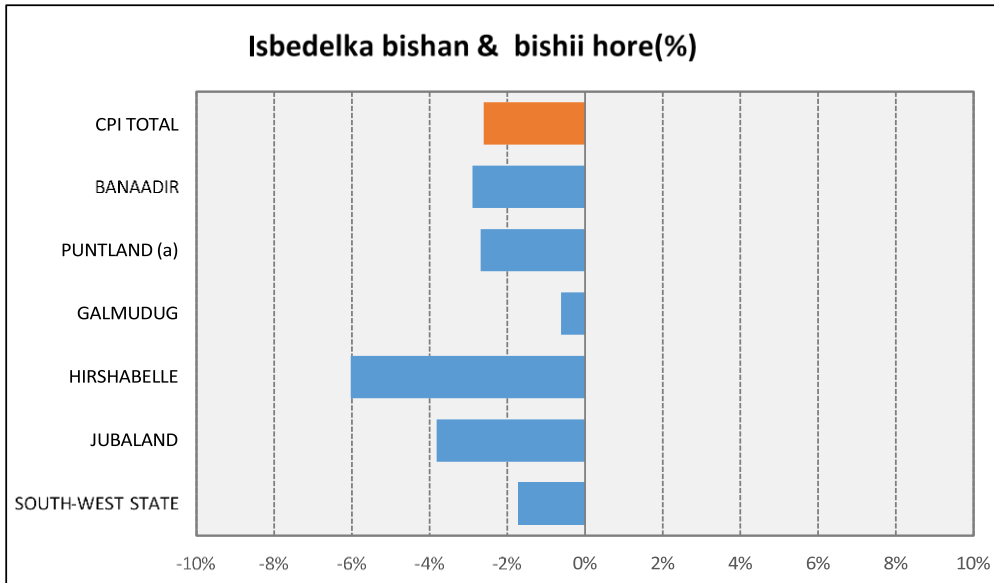
- Gobolka Koonfur-Galbeed ((-1.7%): Maqaayadaha iyo hoyga (-25.2%)
- Puntland ((-2.7%): Raashinka iyo Cabitaanada aan Khamriga ahayn (-1.9%)
- Banaadir (-2.9%): Cuntada(-7.1%)
- Jubaland (-3.8%): Gaadiidka (-20.8%)
- Galmudug ((-0.6%): Cuntada iyo cabitaanka (-2.6%)
- Hirsabelle (-6.0%): Daryeelka Shakhsi ahaaneed, Ilaalinta Bulshada iyo (-3.33%).

Shaxda 5. Heer gobol ayaa isbeddelay boqolkiiba bishii

Gobolka	al bishiiba		
	Abriil-25	Maajol-25	Juun-25
Wadarta guud ee CPI	1.3%	0.0%	-2.6%
BANAADIR	3.3%	0.7%	-2.9%
PUNTLAND	-0.2%	-0.8%	-2.7%
GALMUDUG	0.3%	-7.1%	-0.6%
HIRSHABELLE	1.1%	1.9%	-6.0%
JUBALAND	5.9%	-6.8%	-3.8%
GOBOLKA KOONFUR-GALBEED	-0.6%	5.2%	-1.7%

(a) Tixraca Puntland waa la qiyaasay

**Jaantuska 8. Isbadalka boqoleyda billaha ah ee heer dowlad goboleed**



(a) Tixraca Puntland waa la qiyaasay