



**SOMALI NATIONAL
BUREAU OF STATISTICS**
Federal Republic of Somalia

TUSAHA SICIRKA BADEECADAHA SOOMALIYA



OGOOSTO 2025

Tusaha Sicirka Badeecadaha, Soomaaliya

Hordhac

Tusaha Sicirka Badeecadaha (TSB) waa tilmaame dhaqaale oo muhiim ah oo hal beeg u ah isbeddelka guud ee isugeynta boqoleyda ee sicirka tafaariiqda ee badeecadaha iyo adeegyada ay iibsadaan qoysaska Soomaaliyeed. Waxay u adeegtaa sida qiyaasta asaasiga ah ee sicir bararka, ayada oo awood u siineysa siyaasad-dejiyeyaasha, ganacsiyada, iyo cilmi-baarayaasha si ay u qiimeeyaan isbeddellada ascaarta si ay u sameeyaan go'aamo dhaqaale oo maan-gal ah. Tan iyo Janaayo 2025, TSB-da Soomaaliya ayaa la sii daayay iyadoo la tixgelinayo hal beeg cusub oo laga soo qaatay Sahan Kharashaadka Qoysaska Soomaaliya ee 2022 (SIHBS), iyadoo lagu lifaaqaayo kalasaarida cusub ee kharashka qoysaska (COICOP 2018), kana turjumeyso dhammaan Doladaha Xubnaha ka ah Dowlada Federaalka ah ee Soomaaliya. qoraal ku saabsan habraaca ayaa lagu soo bandhigi doonaa Bogga Internet-ka ee SNBS.

Tusaha Sicirka Badeecadaha (TSB) waxaa lagu qeexay sidan:

"Cabbirka celceliska Hal beega isbedelka qiimaha tafaariiqda ee ay macaamiishu ku bixiyeen agabka iyo adeegyada mudo cayiman." meelaha ugu muhimsan ee TSB-da loo adeegsan karo waxaa ka mid ah:

- Cabirka Sicir-bararka: Sicir-bararka sannadlaha ah (YoY) wuxuu isbarbar dhigayaa qiimaha hadda ee sanadkan iyo isla qiimahaas sannadkii hore, isagoo u adeegaya sida agab loogu talagalay siyaasadda lacagta iyo maaliyadda.
- Go'aan-qaadasho Dhaqaale: Waxaa isticmaala hay'adaha dawladda, ganacsiyada, iyo hay'adaha caalamiga ah si ay ugu jaan gooyaan mushaharka, qandaraasyada, iyo ka faa'iidooyinka bulshada.
- Falanqeynta Dhaqaalaha Balaaran: Waxay taageertaa qiimeynta awoodda wax iibsiga, hagaajinta qiimaha kharashka-nololeed, iyo xasiloonida dhaqaalaha.

Hab Ururinta Qiimaha:

- Si joogta ah: Waxa loo sameeyaa toddobaadka ugu horreeya iyo kan saddexaad ee bil kasta.
- Deeganada laga soo uruuriyo: Muqdisho (Caasimadda), Dhammaan Dawladaha Xubnaha ka ah Dawladda Federaalka (FMS).
- Ashyaada ama badeecadaha: 537 shey, oo laga soo xulay Sahankii 2022 SIHBS, oo lagu kala saaray nidaamka Kala-soocidda Qaybaha Isticmaalka Qofka (COICOP) 2018 oo ka kooban 13 qaybood.

Istaatistikada Muhiimka ah

Sannadle

- Laba iyo tobankii bilood ee la soo dhaafay ilaa Agoosto 2025, TSB-da ayaa sare u kacday 3.2%...
- Qiimaha kororka ugu weyn ee laba iyo tobankii biloodayaa ahaa Daryeelka Shakhsi ahaaneed, Ilaalinta Bulshada iyo Alaabaha iyo Adeegyada yar yar (+14.8%), Adeega wax barashada (+11.8%), Madadaalada, Ciyaaraha iyo Dhaqanka (+11.1%), Dharka iyo Kabaha(+5.1%), Guryaha, Biyaha, Korontada, Gaaska iyo Shidaalka kale (+4.5%).
- Qaybaha hoos u dhacay ayaa ahaa Warfaafinta iyo Isgaarsiinta (-1.4%),Tubaakada iyo Qaadka (-2.1%).
- Qiimaha kororka ayaa saameeyey dowlad goboleedyada intooda badan bishii Agoosto , Banadir (+5.5%), Koonfur-Galbeed (+4.9%), Hirshabeele (+4.7%),Jubaland (+4.4%), Galmudug (+4.4%).
- Putland (-4.0%) ayaa yeeshay saameyn hoos dhac sababo la xariira miisaankiisa weyn ee billaha ah.

Bille

- Tusaha Sicirka Badeecadaha (TSB) waxuu ahaa mid deggan bishan.
- Qiimaha kororka ugu weyn ee bishan ayaa ahaa Agabka, Qalabka qoysaska iyo dayactirka guryaha ee joogatada(+1.1%), Cuntada iyo Cibitaanada(+0.9%), Tubaakada iyo Qaakda(+0.6%), caafimaadka (+0.4%).
- Qayba hoos u dhacay ayaa ahaa Caymiska iyo Maaliyada(-5.0%), daryeelka shakhsiga ah, ilaalinta bulshada iyo alaab(-4.2).
- Qiima kororka ugu badan ee dawladd goboleedyada wuxuu ka yimid Hirshabeele (+3.5%) iyadoo hoos u dhac la taaban karo ka yimid Banaadir (-1.7%).

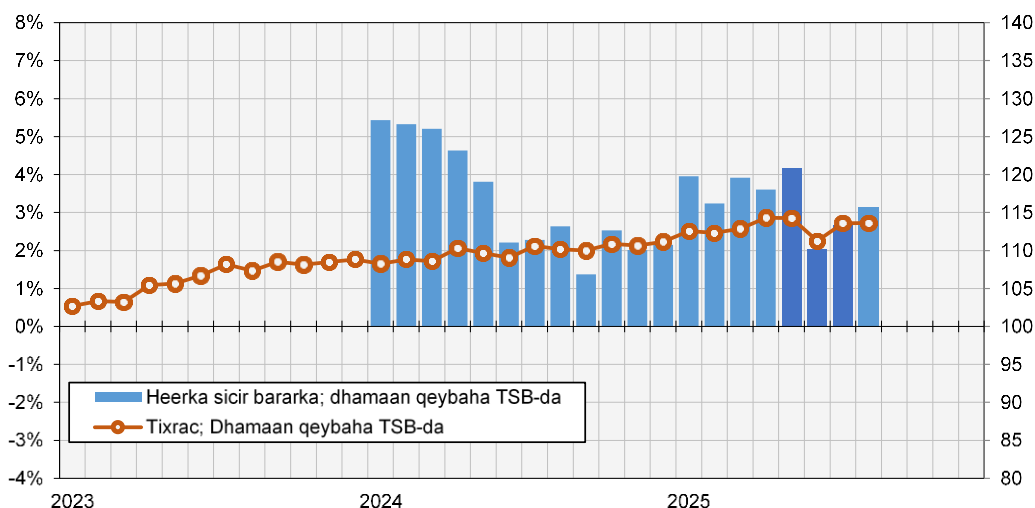
Shaxda 1. TSB, Dhaqdhaqaaqyada Sanadlaha & Billaha ah ee Soomaaliyeed (%)

	Isbedalka Billaha ah (%)	Isbedalka Sanadlaha ah (%)
Agoosto-25	0.0%	3.2%
Julayo-25	2.1%	2.7%
Juune-25	-2.6%	2.0%

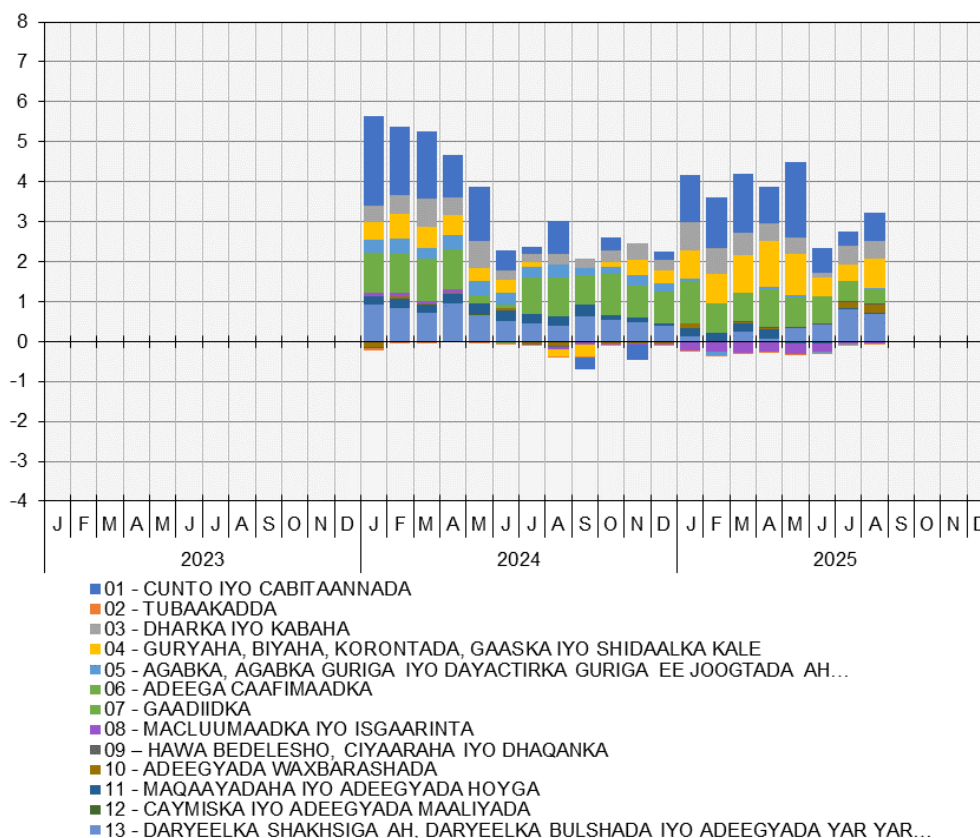
Warbixinta TSB-da ee Soomaaliyeed – Dhamaan qeybaha TSB-da

Jaantuska 1. Heerka sicir bararka marka loo eego TSB-da
Isbedelka boqoleyda ee 12 billood

Tixraaca TSB-da
Mudada Tixraaca = 2022



Jaantuska 2. qeybaha ka qeyb qaata (%) heerka sicir bararka (habka qeybinta)



War bixin Kooban ee Dhaqdhaqaaqa Sannadlaha ah

Muddo 12 bilood ah ilaa Agoosto 2025, TSB-da ayaa sare u kacay 3.2%

- Qiimo kororka ugu weyn ee Laba iyo tobankii bilood ee la soo dhaafay ayaa ahaa:
- Daryeelka Shakhsi ahaaneed, Ilaalinta Bulshada iyo Alaabooyinka iyo Adeegyada yar yar (+14.8%):
- daryeelkashaqsigu (+16.24%); Agabka kale ee shaqsigu u gaarka ah(+7.37%).
- Adeegyada Waxbarashada (+11.8%): Waxbarashada Hore Carruurta ee Dugsiga Hoose (+14.40%); Waxbarashada aan lagu qeexin heer (+10.32%).
- Hawo bedekasho, ciyaarta iyo dhaqanka (+11.1%),alaabta dhaqanka (+25.2%).
- Dharka iyo Kabaha(+5.1%): Dharka(+4.36%), Kabaha(+10.60%).
- Guryaha, Biyaha, Korontada, Gaaska iyo Shidaalka kale(+4.5%);, Biyaha(+12.63%)

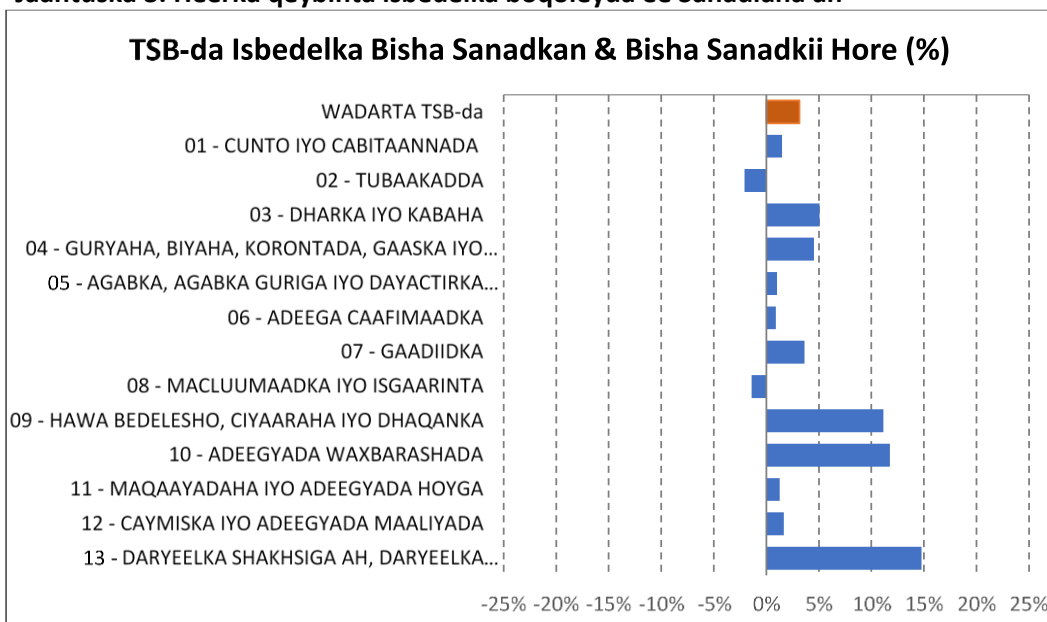
Hoos u dhaca ugu weyn Laba iyo tobankii bilood ee la soo dhaafay ayaa ahaa:

- Macluumaadka iyo Isgaarsiinta (-1.4%): Qalabka (-9.44%).
- Tubaakada iyo Qaadka (-2.1%): Qaadka (-3.38%), Tubaakada(+4.91%).

Shaxda 2. boqolkiiba isbeddelka heerka qaybta sannadlaha ah

Qaybinta	% - isbeddel sannadle ah		
	Juun-25	Julaay-25	Agoosto-25
Wadarta guud ee CPI	2.0%	2.7%	3.2%
01-Cunno iyo Cabbitaannada aan khamriga ahayn	1.4%	0.8%	1.5%
02 - Cabbitaannada khamriga, Tubaakada iyo maandooriyaha	-4.0%	-2.0%	-2.1%
03 - Dharka iyo Kabaha	1.3%	5.4%	5.1%
04 - Guryaha, Biyaha, Korontada, Gaaska iyo Shidaalka kale	2.8%	2.5%	4.5%
05 - Agabka, Qalabka qoysaska iyo dayactirka guryaha ee joogatada	-1.1%	-0.3%	1.0%
06 - CAAFIMAAD	5.3%	4.2%	0.9%
07 - GAADIIDKA	7.3%	5.0%	3.6%
08 - MACLUUMAADKA IYO ISGAARINTA	-5.6%	-1.8%	-1.4%
09 - Madadaalada, CIYAARAHA IYO DHAQANKA	5.2%	5.6%	11.1%
10 - ADEEGYADA WAXBARASHADA	0.7%	8.1%	11.8%
11 - Makhaayadaha iyo ADEEGYADA hoyga	-2.1%	1.0%	1.3%
12 - CAYMISKA IYO ADEEGYADA MAALIYADA	-0.1%	6.5%	1.7%
13 - DARYEELKA SHAKHSIGA AH, ILAALINTA BULSHADA IYO ALAAB KALA DUWAN	8.4%	16.7%	14.8%

Jaantuska 3. Heerka qeybinta isbedelka boqoleyda ee Sanadlaha ah



Warbixin Kooban ee Dhaqdhaqaaqa Billaha ah

TSB-da yaa ahaa mid deggan bishaan. Qiima kororka ugu weyn ayaa ka yimideen :

- Agabka Guryaha, Qalabka Qoysaska iyo dayactirka guryaha ee joogtada ah (+1.1%): Alaabaha iyo Adeegyada Dayactirka Guriga ee Joogtada 4.06%.
- Cuntada iyo Cabitaanada (+0.9%): Cuntada(+0.97%); Cabbitaannada (-0.52%).
- Caafimaadka(+0.4%): Adeegyada bukaan-socodka(+1.71%).

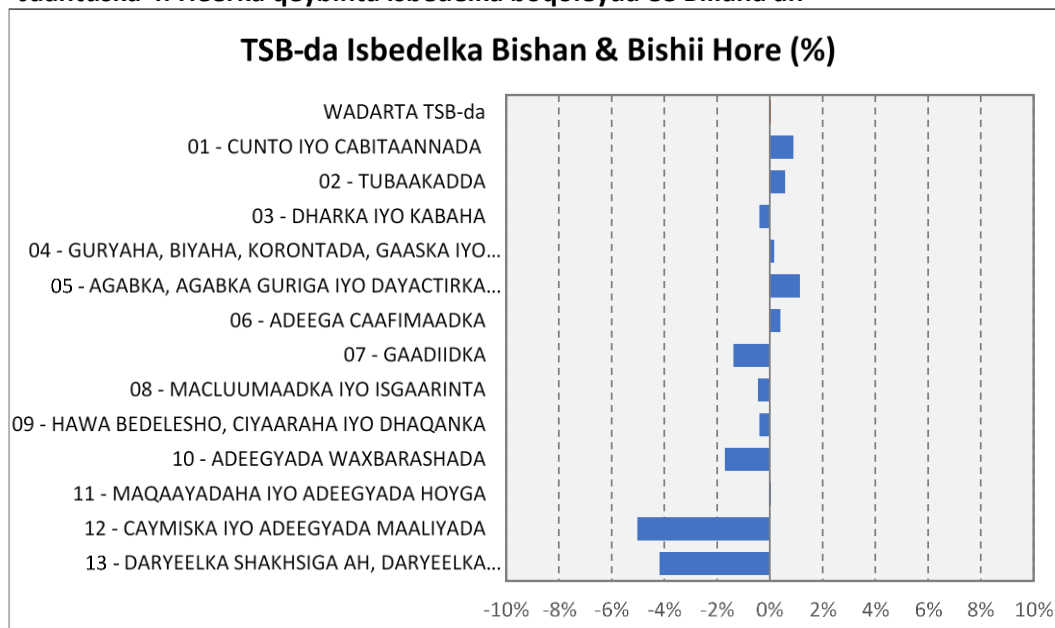
Hoos u dhacii ugu badnaa bishaan ayaa ahaa:

- Caymiska iyo adeegyada maaliyada (-5.0%): Adeega caymiska(-7.53%); Adeegyada Maaliyadeed (+4.88%).
- Daryeelka Shakhsi ahaaneed, Ilaalinta Bulshada iyo Adeegyada yar yar(-4.2%): Daryeelka Shakhsiyeed(-4.31%); Alaabooyinka Kale ee Shakhsiga (-3.47%).

Shaxda 3. heerka qaybta boqolkiiba isbeddelka bishii

Qaybinta	%-beddel bishiiba		
	Juun-25	July-25	Agoosto-25
Wadarta guud ee CPI	-2.6%	2.1%	0.0%
01-Cunno iyo Cabbitaannada aan khamriga ahayn	-4.0%	1.0%	0.9%
02 - Cabbitaannada khamriga, Tubaakada iyo maandooriyaha	-1.5%	1.8%	0.6%
03 - Dharka iyo Kabaha	-2.3%	1.5%	-0.4%
04 - Guryaha, Biyaha, Korontada, Gaaska iyo Shidaalka kale	-2.5%	1.1%	0.2%
05 - Alaabta, Qalabka Guriga iyo Guriga caadiga ah...	-2.5%	1.6%	1.1%
06 - CAAFIMAAD	1.4%	1.9%	0.4%
07 - GAADIIDKA	-1.9%	7.0%	-1.4%
08 - MACLUUMAADKA IYO ISGAARINTA	0.9%	4.8%	-0.4%
09 - Madadaalada, CIYAARAHA IYO DHAQANKA	1.3%	-3.0%	-0.4%
10 - ADEEGYADA WAXBARASHADA	2.3%	3.2%	-1.7%
11 - Makhaayadaha iyo ADEEGYADA hoyga	0.4%	2.2%	0.0%
12 - CAYMISKA IYO ADEEGYADA MAALIYADA	-1.2%	7.5%	-5.0%
13 - DARYEEL GAAR AH, ILAALINTA bulsheed iyo kala duwanaansho...	1.0%	5.0%	-4.2%

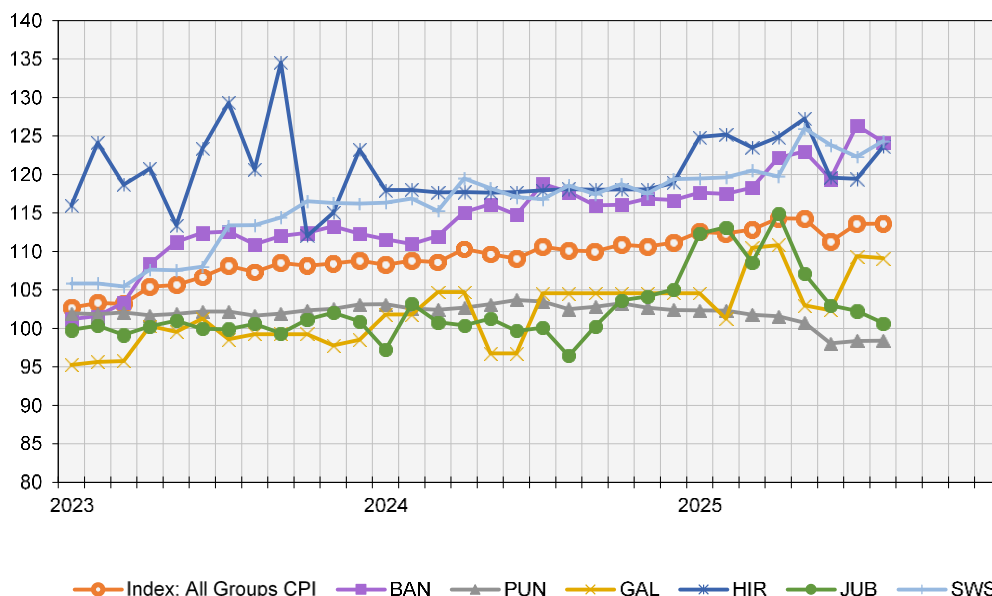
Jaantuska 4. Heerka qeybinta isbedelka boqoleyda ee Billaha ah



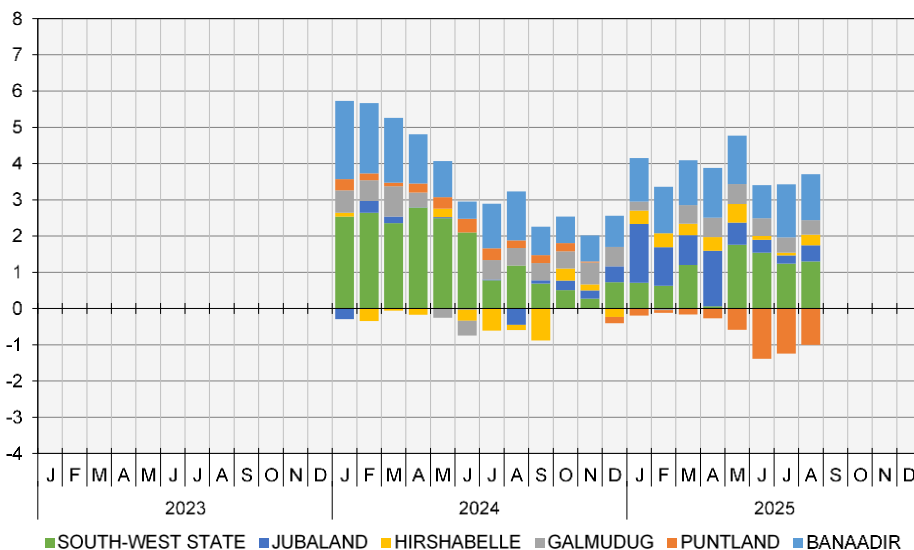
Warbixinta TSB-da Soomaaliyeed – Isbarbardhiga Dowlad goboleedyada.

Jaantuska 5. TSB-da ee dowlad goboleedyada (a)

Mudada Tixraca = 2022



Jaantuska 6. Qeybaha ka qeybqaata (%) heerka sicir bararka (qeybin heer dowlad goboleed) (a)



War bixin Kooban ee Dhaqdhaqaaqa Sanadlaha ah

Mudada 12 bilood ee la soo dhaafay ilaa Agoosto 2025 TSB-da, dhaqdhaqaaqyo sare u kac ah ayaa ka yimid

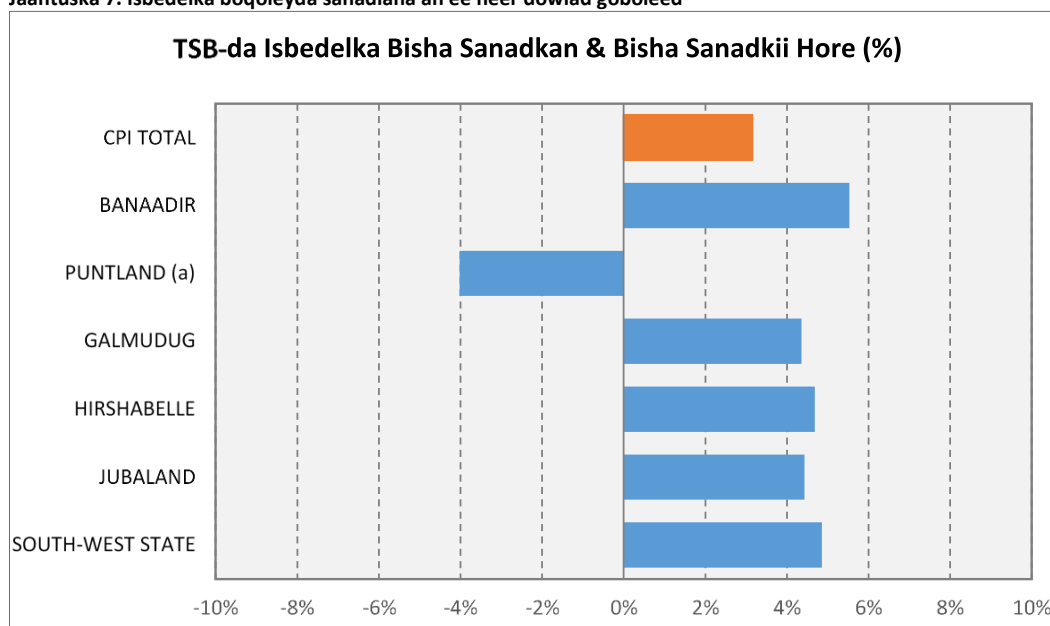
- Banaadir (+5.5%): Adeegyada waxbarashada(+16.23%), Dharka iyo kabaha (+16.98%), Agabka, qalabka guriga ay qoysasu sida joogtada ah u isticmaalaan(+12.57%), macluumaadka iyo isgaarinta(-19.12%).
- Koofur galbeed (+4.9%): Adeegyada waxbarashada (+40.44%), Aaryeelka shakhsi ahaaneed, ilaalinta bulshada iyo adeegayada yar yar(+20.63%).
- Hirshabelle (+4.7%): Macluumaadka iyo isgaarinta(+48.23%).
- Jubaland (+4.4%): ahaa makhaayadaha iyo adeegyada hoyga (+35.25%), Guryaha, biyaha, korontada, gaaska iyo shidaalka kale(+31.37%), Macluumaadka iyo Isgaarinta (-21.83%).
- Galmudug (+4.4%): Agabka, qalabka guriga ay qoysasu sida joogtada ah uisticmaalaan (+20.58%), caafimaadka (+12.83%), Daryeelka shakhsi ahaaneed, ilaalinta bulshada iyo adeegayada yar yar(+7.90%).

Dhaqdhaqaaqa hoos u dhaca:

- Putland (-4.0%), Cuntada iyo cabitaanada (-3.6%)

Shaxda 4. Boqolkiiba isbeddelka heerka gobolka

Gobolka	% - isbeddel sannadle ah		
	Juun-25	July-25	Aug-25
Wadarta guud ee CPI	2.7%	3.2%	3.9%
BANAADIR	4.1%	6.4%	5.5%
PUNTLAND	-5.5%	-5.0%	-4.0%
GALMUDUG	5.8%	4.6%	4.4%
HIRSHABELLE	1.6%	1.2%	4.7%
JUBALAND	3.3%	2.2%	4.4%
KOONFUR-GALBEED	5.8%	4.7%	4.9%

Jaantuska 7. Isbedelka boqoleyda sanadlaha ah ee heer dowlad goboleed**War bixin Kooban ee Dhaqdhaqaaqa Billaha ah**

Intii lagu jiray bishii Sebtember 2025, dhaqdhaqaaqyo hoos u dhac ah ayaa ka yimid:

- Hirsabelle(+3.5%): Tubaakada iyo Qaadka (+14.1%).
- Koonfur galbeed(+1.7%):caafimaad(+2.4%).
- Puntland (0.0%): Cuntada iyo Cabitaanada (-1.9%).

Dhaqdhaqaaqyo hoos u dhaca ayaa ka yimid:

- Banaadir (-1.7%): Daryeelka Shakhsi ahaaneed, Ilaalinta Bulshada iyo Adeegayada yar yar(-10.7%).
- Jubaland (-1.5%): Tubaakada iyo Qaadka (-3.8%).
- Galmudug (-0.2%): Agabka, Qalabka qoysaska iyo dayactirka guryaha ee joogatada (+16.8%).

Shaxda 5. Heer gobol ayaa isbeddelay boqolkiiba bishii

Gobolka	Juun-25	%beddel bishiiba		
		Jula ay-25	Agoos to-25	
Wadarta guud ee CPI		-2.6%	2.1%	0.0%
BANAADIR		-2.9%	5.8%	-1.7%
PUNTLAND		-2.7%	0.3%	0.0%
GALMUDUG		-0.6%	6.9%	-0.2%
HIRSHABELLE		-6.0%	-0.1%	3.5%
JUBALAND		-3.8%	-0.7%	-1.5%
GOBOLKA KOONFUR-GALBEED		-1.7%	-1.2%	1.7%

Jaantuska 8. Isbedelka boqoleyda bilaha ah ee heer dowlad goboleed.

