



**SOMALI NATIONAL  
BUREAU OF STATISTICS**  
Federal Republic of Somalia

# TUSAHA SICIRKA BADEECADAHA SOOMALIYA



## DISEEMBER 2025

# Tusaha Sicirka Badeecadaha, Soomaaliya

## Hordhac

Tusaha Sicirka Badeecadaha (TSB) waa tilmaame dhaqaale oo muhiim ah oo hal beeg u ah isbeddelka guud ee isugeynta boqoleyda ee sicirka tafaariiqda ee badeecadaha iyo adeegyada ay iibsadaan qoysaska Soomaaliyeed. Waxay u adeegtaa sida qiyaasta asaasiga ah ee sicir bararka, ayada oo awood u siineysa siyaasad-dejiyeyaasha, ganacsiyada, iyo cilmi-baarayaasha si ay u qiimeeyaan isbeddellada ascaarta si ay u sameeyaan go'aamo dhaqaale oo maan-gal ah. Tan iyo Janaayo 2025, TSB-da Soomaaliya ayaa la sii daayay iyadoo la tixgelinayo hal beeg cusub oo laga soo qaatay Sahan Kharashaadka Qoysaska Soomaaliya ee 2022 (SIHBS), iyadoo lagu lifaaqaayo kalasaarida cusub ee kharashka qoysaska (COICOP 2018), kana turjumeysa dhammaan Dowladaha Xubnaha ka ah Dowlada Federaalka ah ee Soomaaliya. qoraal ku saabsan habraaca ayaa lagu soo bandhigi doonaa Bogga Internet-ka ee SNBS.

### Tusaha Sicirka Badeecadaha (TSB) waxaa lagu qeexay sidan:

"Cabbirka celceliska Hal beega isbedelka qiimaha tafaariiqda ee ay macaamiishu ku bixiyeen agabka iyo adeegyada mudo cayiman." meelaha ugu muhimsan ee TSB-da loo adeegsan karo waxaa ka mid ah:

- Cabirka Sicir-bararka: Sicir-bararka sannadlaha ah (YoY) wuxuu isbarbar dhigayaa qiimaha hadda ee sanadkan iyo isla qiimahaas sannadkii hore, isagoo u adeegaya sida agab loogu talagalay siyaasadda lacagta iyo maaliyadda.
- Go'aan-qaadasho Dhaqaale: Waxaa isticmaala hay'adaha dawladda, ganacsiyada, iyo hay'adaha caalamiga ah si ay ugu jaan gooyaan mushahaarka, qandaraasyada, iyo faa'iidooyinka bulshada.
- Falanqeynta Dhaqaalaha Balaaran: Waxay taageertaa qiimeynta awoodda wax iibsiga, hagaajinta qiimaha kharashka-nololeed, iyo xasiloonida dhaqaalaha.

### Hab Ururinta Qiimaha:

- Si joogta ah: Waxa loo sameeyaa toddobaadka ugu horreeya iyo kan saddexaad ee bil kasta.
- Deeganada laga soo uruuriyo: Muqdisho (Caasimadda), Dhammaan Dawladaha Xubnaha ka ah Dawladda Federaalka (FMS).
- Ashyaada ama badeecadaha: 537 shey, oo laga soo xulay Sahankii 2022 SIHBS, oo lagu kala saaray nidaamka Kala-soocidda Qaybaha Isticmaalka Qofka (COICOP) 2018 oo ka kooban 13 qaybood.

### Istaatistikada Muhiimka ah

#### Sannadle

Laba iyo tobankii bilood ee la soo dhaafay ilaa Diseember 2025, TSB-da ayaa sare u kacay 5.1% marka la barbar dhigo sicirbararka 2024 oo ahaa 3.7 boqolkiiba.

- Qiimaha kororka ugu weyn ee laba iyo tobankii bilood ayaa ahaa Makhaayadaha iyo Adeegyada hoyga (+14.1%), Daryeelka Shakhsi ahaaneed, ilaalinta Bulshada iyo Alaabaha adeegyada yar yar (+11.0%), Caafimaadka (+10.6%), Adeegyada waxbarashada (+8.6%), Cuntada iyo cabitaanada (+6.6%).
- Waxaa hoos u dhacay Gaadiidka (-3.9%), Qaadka iyo Tubaakada (-2.5%).
- Qiima kororka ayaa saameeyey dhamaan dowlad goboleedyada bishii Diseember, Koonfur-Galbeed (+8.0%), Banadir (+5.7%), Hirshabeele (+5.6%), Jubaland (+4.8%), Galmudug (+4.3%).
- Hoos u dhac yar ee Putland (-1.3%) ayaa saameyn yeeshay sababo la xariira miisaankiisa weyn. Celcelis ahaan sanadkii 2025 marka loo eego 2024, sicir-bararka ugu sarreeya waxaa laga diiwaangeliyey Daryeelka Shakhsi ahaaneed, Ilaalinta Bulshada iyo Adeegyada yar yar, oo kordhay 7.7%, halka Macluumaadka iyo Isgaarsiinta uu kuyimid hoos udhac bille ah oo gaaraya 4.9

Tusaha Sicirka Badeecadaha (TSB) waxuu kordhay 0.7% bishan.

- Qiimaha kororka ugu badanaa ee bishan ayaa ahaa Caafimaadka (+6.2%), Adeegyada waxbarashada (+3.7%), Agabka, Qalabka Gurigaha ay qoysasku sida Joogtada ah u isticmaalaan (+2.0%).
- Waxaa hoos u dhacay Gaadiidka (-4.9%), Daryeelka Shakhsi ahaaneed, ilaalinta Bulshada iyo alaabaha iyo adeegyada yar yar (-1.8%).
- Qiima kororka ugu badan ee dawladda goboleedyada wuxuu ka yimid Jubaland (+0.9%) halaka Hirshabelle la diwaangeliyey hoos-u-dhac gaaraya (-0.2%)

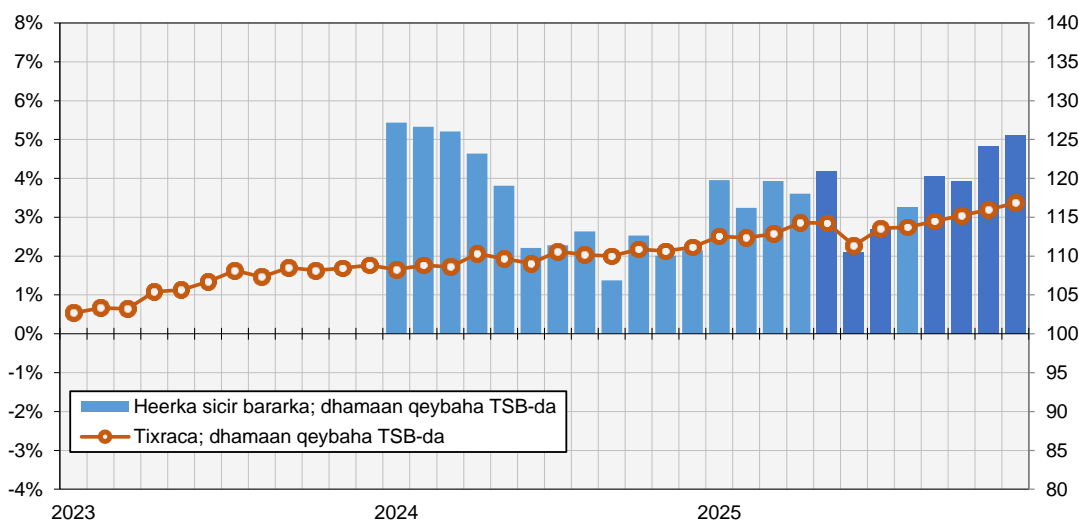
• Shaxda 1. TSB, Dhaqdhaqaaqyada Sanadlaha & Billaha ah ee Soomaaliyeed (%)

	Isbedalka Billaha ah (%)	Isbedalka Sanadlaha ah (%)
Des-25	0.7%	5.1%
Nof-25	0.6%	4.8%
Okt-25	0.7%	3.9%

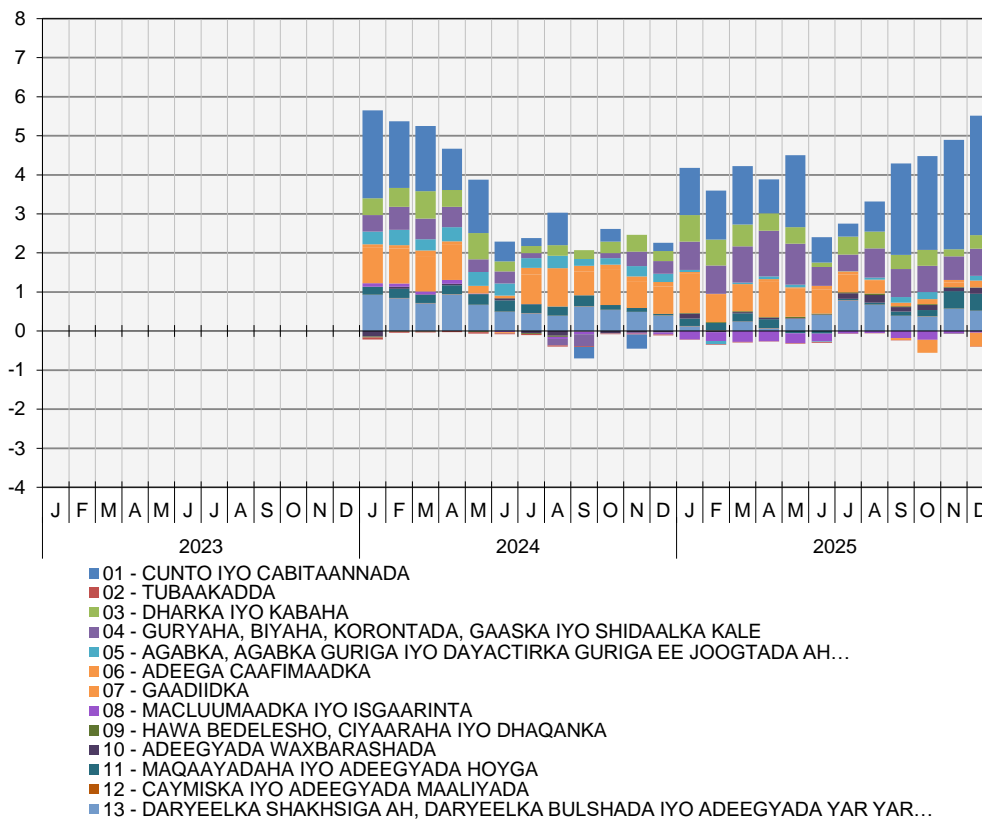
Warbixinta TSB-da ee Soomaaliyeed – Dhamaan qeybaha TSB-da

Jaantuska 1. Heerka sicir bararka marka loo eego TSB-da  
Isbedelka boqoleyda ee 12bilood.

Tixraca TSB-da  
Waqtiga Tixraca = 2022



Jaantuska 2. Qeybaha ka qeybqaata (%) heerka sicir bararka (heerka qeybinta)



**War bixin Kooban ee Dhaqdhaqaaqa Sannadlaha ah**

Muddo 12 bilood ah ilaa Diseember 2025, TSB-da ayaa sare u kacay 5.1%.

Qiimo kororka ugu weyn Laba iyo tobankii bilood ee la soo dhaafay ayaa ahaa:

- Makhaayadaha iyo Adeegyada hoyga: (+14.1%): Adeegyada Makhaayadaha(+16.8%).
- Daryeelka Shakhsi ahaaneed, Ilaalinta Bulshada, Alaabooyinka iyo Adeegyada yar yar (+11.0%): Daryeelkashaqsiga (+12.1%), Agabka kale ee shaqsiga u gaarka ah (+2.8%).
- Caafimaadka(+10.6%):adeega daryeelka bukaan jifka(+21.1%); Daawooyin iyo Adeegyada Caafimaadka(+16.2%).
- Adeegyada waxbarashada (+8.6%): Waxbarashada aan lagu qeexin heer (+12.6%).
- Cuntada iyo cabitaanada (+6.6%): Cunto (+7.1%); Cabbitaannada ayaa hoos u dhacy (-4.9%).

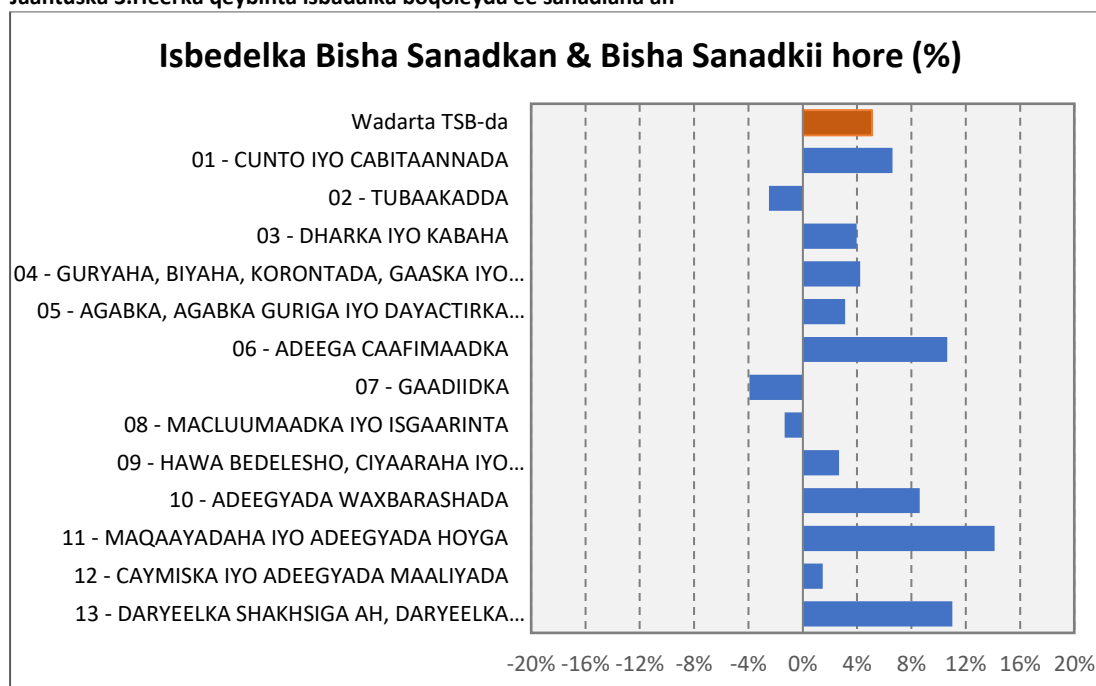
Hoos u dhaca ugu weyn Laba iyo tobankii bilood ee la soo dhaafay ayaa ahaa:

- Gadiidka(-3.9%): Adeegyada rakaabka Gaadiidka (-5.5%).
- Tubaakada iyo jaadka(-2.5%):Tubaakada(-3.9%); Qaadka(+4.9%).

**Shaxda 2. boqolkiiba isbeddelka heerka qaybta sannadlaha ah**

Qaybinta	% - isbeddel sannadle ah		
	Okt-25	Nof-25	Dis-25
WADARTA GUUD EE TSB-da	3.9%	4.8%	5.1%
01 - CUNTO IYO CABITAANNADA	5.2%	6.1%	6.6%
02 - TUBAAKADDA	0.0%	-2.7%	-2.5%
03 - DHARKA IYO KABAHA	4.8%	2.1%	4.0%
04 - GURYAHA, BIYAHA, KORONTADA, GAASKA IYO SHIDAALKA KALE	4.1%	3.7%	4.2%
05 - AGABKA, AGABKA GURIGA IYO DAYACTIRKA GURIGA EE JOOGTADA AH...	4.7%	0.0%	3.1%
06 - ADEEGA CAAFIMAADKA	7.5%	4.3%	10.6%
07 - GAADIIDKA	-3.6%	1.3%	-3.9%
08 - MACLUUMAADKA IYO ISGAARINTA	-6.6%	-1.8%	-1.3%
09 – HAWA BEDELESHO, CIYAARAHA IYO DHAQANKA	8.0%	3.4%	2.7%
10 - ADEEGYADA WAXBARASHADA	7.0%	5.1%	8.6%
11 - MAQAAYADAHA IYO ADEEGYADA HOYGA	5.3%	14.6%	14.1%
12 - CAYMISKA IYO ADEEGYADA MAALIYADA	0.6%	1.4%	1.5%
13 - DARYEELKA SHAKHSIGA AH, DARYEELKA BULSHADA IYO ADEEGYADA YAR YAR...	7.5%	11.9%	11.0%

**Jaantuska 3.Heerka qeybinta isbadalka boqoleyda ee sanadlaha ah**



Warbixin Kooban ee Dhaqdhaqaaqa Billaha ah  
TSB-da ayaa bishan sare u kacday 0.7% intii lagu jiray bishii Diseember 2025.

Dhaqdhaqaaqyada sare u kac ee ugu badan ayaa ka yimid:  
 Caafimaadka(+6.2%): Daawooyin iyo Adeegyada Caafimaadka(+8.7%).

• Adeegyada waxbarashada (+3.7%): Waxbarashada Sare (+6.3%).

Agabka, Qalabka Guryaha ay qoysasku sida Joogtada ah u isticmaalaan(+2.0%): Weelasha glass-ka ah, agabka miiska iyo alaabta guriga (+4.7%)

Hoos u dhaca ugu weyn bishan ayaa ahaa  
 gadiidka(-4.9%): Adeegyada rakaabka Gaadiidka (-5.9%).

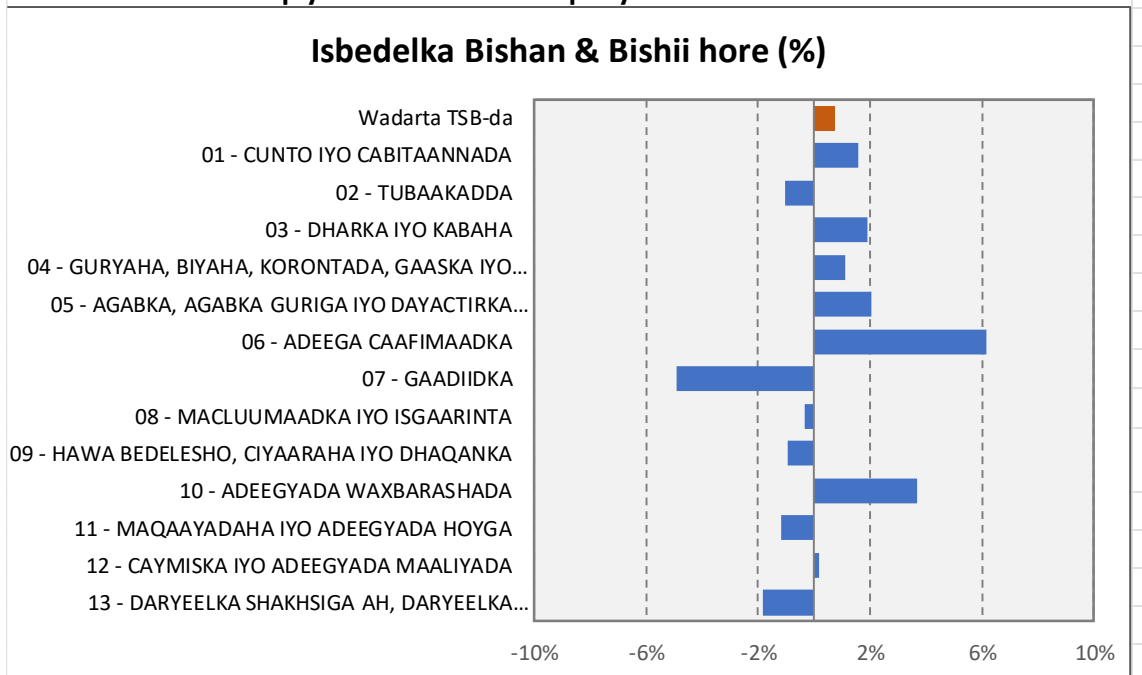
Daryeelka Shakhsi ahaaneed, Ilaalinta Bulshada, Alaabooyinka iyo Adeegyada yar yar (-1.8%):

Daryeelkashaqsigu (-2.0%).

**Shaxda 3. heerka qaybta boqolkiiba isbeddelka bishii**

Qaybinta	% -beddel bishiiba		
	Okt-25	Nof-25	Dis-25
Wadarta guud ee CPI	0.7%	0.6%	0.7%
01 - CUNTO IYO CABITAANNADA	0.5%	0.8%	1.6%
02 - TUBAAKADDA	0.7%	-2.9%	-1.0%
03 - DHARKA IYO KABAHA	0.9%	-1.2%	1.9%
04 - GURYAHA, BIYAHA, KORONTADA, GAASKA IYO SHIDAALKA KALE	1.4%	-0.3%	1.1%
05 - AGABKA, AGABKA GURIGA IYO DAYACTIRKA GURIGA EE JOOGTADA AH...	1.0%	-4.1%	2.0%
06 - ADEEGA CAAFIMAADKA	0.1%	-2.7%	6.2%
07 - GAADIIDKA	0.1%	2.9%	-4.9%
08 - MACLUUMAADKA IYO ISGAARINTA	0.1%	4.8%	-0.3%
09 - HAWA BEDELESHO, CIYAARAHA IYO DHAQANKA	0.3%	-0.5%	-0.9%
10 - ADEEGYADA WAXBARASHADA	0.5%	-1.5%	3.7%
11 - MAQAAYADAHA IYO ADEEGYADA HOYGA	1.2%	8.8%	-1.2%
12 - CAYMISKA IYO ADEEGYADA MAALIYADA	-0.1%	0.6%	0.2%
13 - DARYEELKA SHAKHSIGA AH, DARYEELKA BULSHADA IYO ADEEGYADA YAR YAR...	0.4%	0.0%	-1.8%

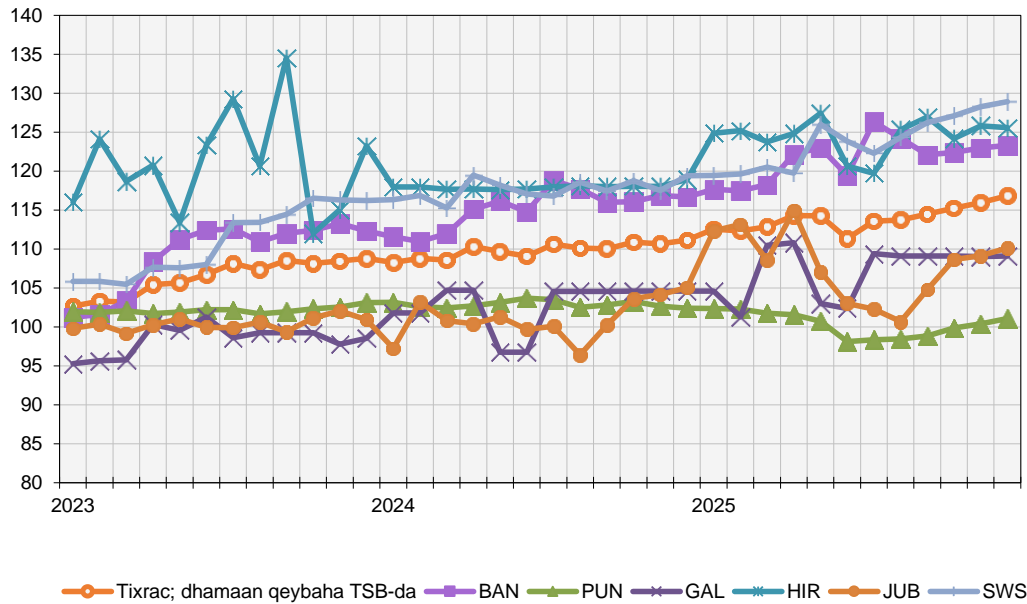
**Jaantuska 4. Heerka qeybinta isbadalka boqoleyda billaha ah**



WARBIXINTA TSB-DA SOOMAALIYEED – ISBARBARDHIGA DOWLAD GOBOLEEDYADA

**Jaantuska 5. Tixraaca TSB-da ee heeer goboleed (a)**

Mudada tixraaca = 2022



(a) Tixraaca Puntland waa la qiyaasa

**War bixin Kooban ee Dhaqdhaqaaqa Sanadlaha ah**

- Mudada 12 bilood ee la soo dhaafay ilaa Disember 2025 TSB-da, dhaqdhaqaaqyo sare u kac ah ayaa ka yimid
- Koofur galbeed (+8.0%):Daryeelka Shakhsi ahaaneed, Ilaalinta Bulshada, Alaabaha iyo Adeegyada yar yar(+27.4%), Cafimaadka(+21.6%).
- Banaadir (+5.7%): Adeegyada Waxbarashada (+23.0%), Makhaayadaha iyo Adeegyada hoyga (+12.8%)
- aydoo ay hoos u dhaceen Warfaafinta iyo Isgaarsiinta (-21.8%).
- Hirshabelle (+5.6%):Daryeelka Shakhsi ahaaneed, Ilaalinta Bulshada, Alaabaha Adeegyada yar yar (+51.2%), Makhaayadaha iyo Adeegyada hoyga (+45.2%)
- Jubaland (+4.8%): Makhaayadaha iyo Adeegyada hoyga (+19.5%), Cuntada iyo Cabitaanada(+9.0%), aydoo ay hoos u dhaceen Gadiidka(-20.7%)
- Galmudug (+4.3%): Caafimaadka (+10.9%), Daryeelka Shakhsi ahaaneed, Ilaalinta Bulshada, Alaabaha iyo Adeegyada yar yar(+7.2%).

Bishii Disember 2025, dhaqdhaqaaq hoos-u-dhac ah ayaa ka yimid:

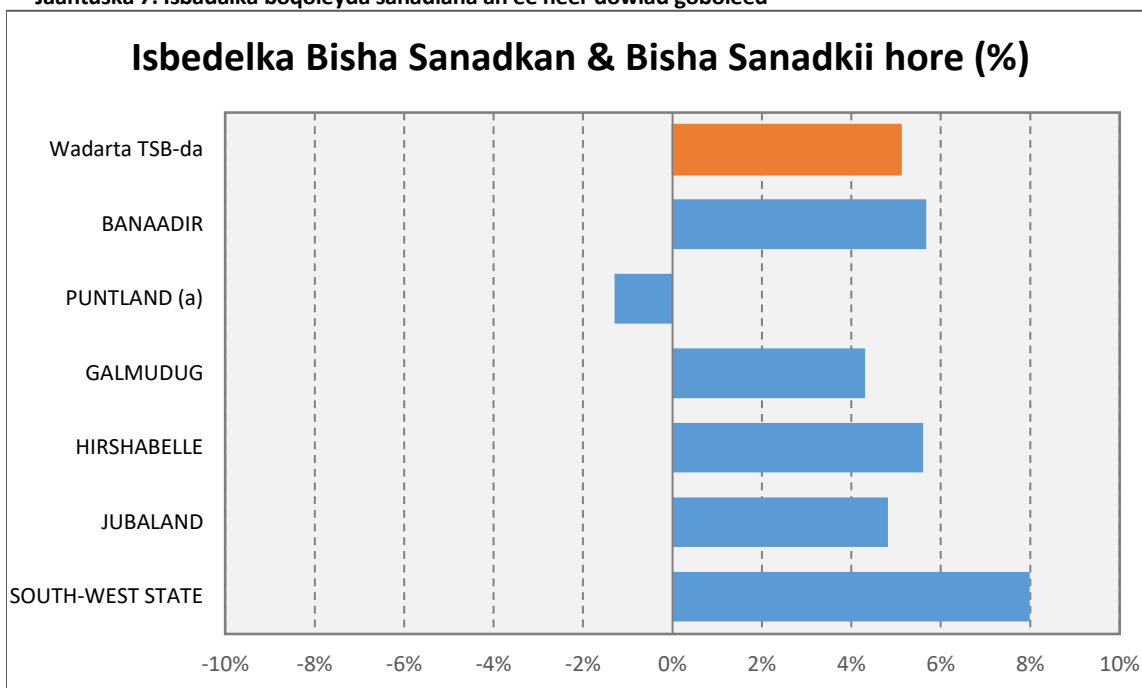
- Putland (-1.3%): Cuntada iyo Cabitaanada (-4.5%).

**Shaxda 4. Boqolkiiba isbeddelka heerka gobolka**

Gobolka	% - isbeddel sannadle ah		
	Oct-25	Not-25	Dis-25
Wadarta guud ee CPI	3.9%	4.8%	5.1%
BANAADIR	5.4%	5.2%	5.7%
PUNTLAND	-3.3%	-2.2%	-1.3%
GALMUDUG	4.3%	4.2%	4.3%
HIRSHABELLE	5.2%	6.6%	5.6%
JUBALAND	4.8%	4.8%	4.8%
KOONFUR-GALBEED	7.0%	9.1%	8.0%

V(a) Tixraca Puntland waa la qiyaasay

**Jaantuska 7. Isbadalka boqoleyda sanadlaha ah ee heer dowlad goboleed**



**War bixin Kooban ee Dhaqdhaqaaqa Billaha ah**

Intii lagu jiray bishii Disember 2025, dhaqdhaqaaqyo hoos u dhac ah ayaa ka yimid:

- Jubaland (+0.9%): Guryaha, Biyaha, Korontada, Gaaska iyo Shidaalka kale (+9.3%).
- Puntland (+0.7%): Makhaayadaha iyo Adeegyada Hoyga (+8.3%)
- Koonfur-Galbeed (+0.5%): Caafimaadka (+20.8%).
- Banaadir (+0.3%): Adeegyada waxbarashada (+8.2%).
- Galmudug (+0.1%): Caafimaadka (+0.3%).

Intii lagu jiray bishii Disember 2025, dhaqdhaqaaqyo hoos u dhac ah ayaa ka yimid

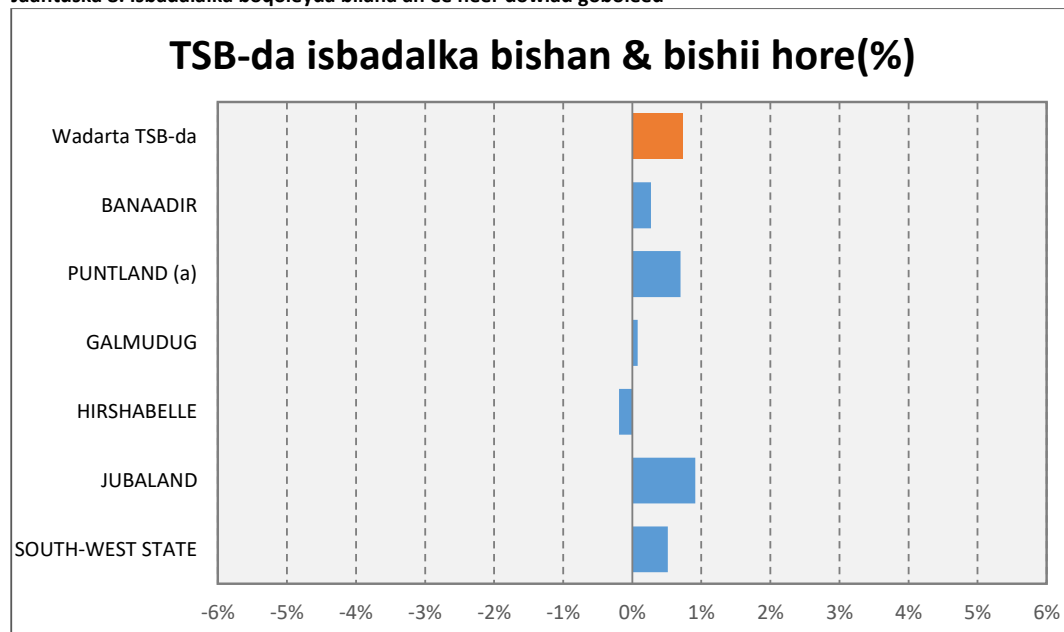
- Hirshabelle (-0.2%): Gadiidka (-26.9%).

## Shaxda 5. Heer gobol ayaa isbeddelay boqolkiiba bishii

Gobolka	%beddel bishiiba		
	Okt-25	Nof-25	Dis-25
Wadarta guud ee CPI	<b>0.7%</b>	<b>0.6%</b>	<b>0.7%</b>
BANAADIR	0.3%	0.5%	0.3%
PUNTLAND	1.0%	0.5%	0.7%
GALMUDUG	0.0%	-0.1%	0.1%
HIRSHABELLE	-2.2%	1.3%	-0.2%
JUBALAND	3.7%	0.4%	0.9%
GOBOLKA KOONFUR-GALBEED	0.7%	0.9%	0.5%

(a) Tixraaca Puntland waa la qiyaasay

## Jaantuska 8. Isbadalalka boqoleyda bilaha ah ee heer dowlad goboleed



(a) Tixraaca Puntland waa la qiyaasey