



**SOMALI NATIONAL
BUREAU OF STATISTICS**
Federal Republic of Somalia

TUSAHA SICIRKA BADEECADAHA SOOMALIYA



SEBTEEMBAR 2025

Tusaha Sicirka Badeecadaha, Soomaaliya

Hordhac

Tusaha Sicirka Badeecadaha (TSB) waa tilmaame dhaqaale oo muhiim ah oo hal beeg u ah isbeddelka guud ee isugeynta boqoleyda ee sicirka tafaariiqda ee badeecadaha iyo adeegyada ay iibsadaan qoysaska Soomaaliyeed. Waxay u adeegtaa sida qiyaasta asaasiga ah ee sicir bararka, ayada oo awood u siineysa siyaasad-dejiyeyaasha, ganacsiyada, iyo cilmi-baarayaasha si ay u qiimeeyaan isbeddellada ascaarta si ay u sameeyaan go'aamo dhaqaale oo maan-gal ah. Tan iyo Janaayo 2025, TSB-da Soomaaliya ayaa la sii daayay iyadoo la tixgelinayo hal beeg cusub oo laga soo qaatay Sahan Kharashaadka Qoysaska Soomaaliya ee 2022 (SIHBS), iyadoo lagu lifaaqaayo kalasaarida cusub ee kharashka qoysaska (COICOP 2018), kana turjumeysa dhammaan Doladaha Xubnaha ka ah Dowlada Federaalka ah ee Soomaaliya. qoraal ku saabsan habraaca ayaa lagu soo bandhigi doonaa Bogga Internet-ka ee SNBS.

Tusaha Sicirka Badeecadaha (TSB) waxaa lagu qeexay sidan:

"Cabirka celceliska Hal beega isbedelka qiimaha tafaariiqda ee ay macaamiishu ku bixiyeen agabka iyo adeegyada mudo cayiman." meelaha ugu muhimsan ee TSB-da loo adeegsan karo waxaa ka mid ah:

- Cabirka Sicir-bararka: Sicir-bararka sannadlaha ah (YoY) wuxuu isbarbar dhigayaa qiimaha hadda ee sanadkan iyo isla qiimahaas sannadkii hore, isagoo u adeegaya sida agab loogu talagalay siyaasadda lacagta iyo maaliyadda.
- Go'aan-qaadasho Dhaqaale: Waxaa isticmaala hay'adaha dawladda, ganacsiyada, iyo hay'adaha caalamiga ah si ay ugu jaan gooyaan mushaharka, qandaraasyada, iyo ka faa'iidooyinka bulshada.
- Falanqeynta Dhaqaalaha Balaaran: Waxay taageertaa qiimeynta awoodda wax iibsiga, hagaajinta qiimaha kharashka-nololeed, iyo xasiloona dhaqaalaha.

Hab Ururinta Qiimaha:

- Si joogta ah: Waxa loo sameeyaa toddobaadka ugu horreeya iyo kan saddexaad ee bil kasta.
- Deeganada laga soo uruuriyo: Muqdisho (Caasimadda), Dhammaan Dawladaha Xubnaha ka ah Dawladda Federaalka (FMS).
- Ashyaada ama badeecadaha: 537 shey, oo laga soo xulay Sahankii 2022 SIHBS, oo lagu kala saaray nidaamka Kala-soocidda Qaybaha Isticmaalka Qofka (COICOP) 2018 oo ka kooban 13 qaybood.

Istaatistikada Muhiimka ah

Sannadle

Laba iyo tobankii bilood ee la soo dhaafay ilaa Sebteember 2025, TSB-da yaa sare u kacay 3.9%.

- Qiimaha kororka ugu weyn ee laba iyo tobankii biloodayaa ahaa Daryeelka Shakhsi ahaaneed, Ilaalinta Bulshada iyo Alaabaha iyo Adeegyada yar yar (+7.9%), Madadaalada, Ciyaaraha iyo Dhaqanka (+7.1%), Adeegyada waxbarashada (+6.0%), Cuntada iyo cabitaanada (+4.8%), Caafimaadka, (+4.5%).
- Qaybaha hoos u dhacay ayaa ahaa Warfaafinta iyo Isgaarsiinta (-5.2%), Gaadiidka 0.6%.
- Qiimaha kororka ayaa saameeyey dowlad goboleedyada intooda badan bishii Sebteember, Koonfur-Galbeed (+7.5%), Banadir (+5.3%), Hirshabeele (+5.1%), Jubaland (+4.7%), Galmudug (+4.3%).
- Putland (-4%) ayaa yeeshay saameyn hoos dhac sababo la xariira miisaankiisa weyn ee billaha ah.

Bille

Tusaha Sicirka Badeecadaha (TSB) waxuu kordhay 0.6% bishan.

- Qiimaha kororka ugu weyn ee bishan ayaa ahaa Makhaayadaha iyo adeegyada hoyga (+3.2%), Cuntada iyo cabitaanada (+2.1%), Madadaalada, Ciyaaraha iyo Dhaqanka (+1.3%), Qaadka iyo Tubaakada (+1.3%), Ilaalinta Bulshada, Alaabooyinka iyo Adeegyada yar yar (+1.1%).
- Qayba hoos u dhacay ayaa ahaa Gaadiidka (-5.4%) iyo Warfaafinta iyo Isgaarsiinta (-2.9%).
- Qiima kororka ugu badan ee dowlad goboleedyada wuxuu ka yimid Jubaland (+4.2%) iyadoo hoos u dhac la taaban karo ka yimid Banaadir (-1.7%).

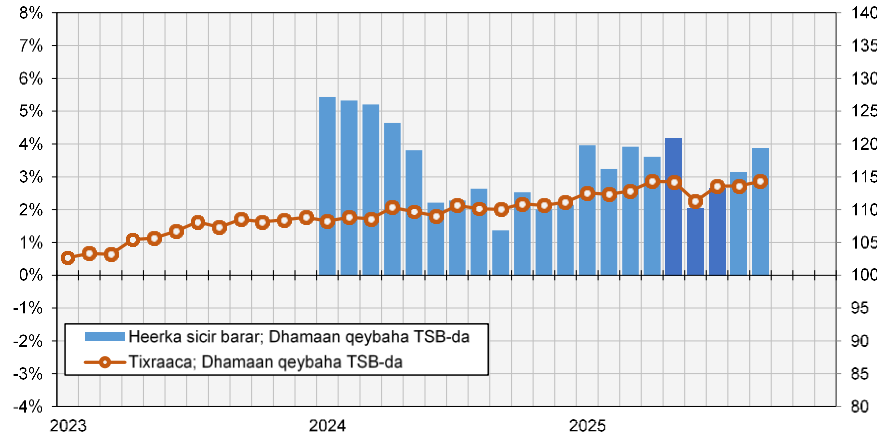
Shaxda 1. TSB, Dhaqdhaqaaqyada Sanadlaha & Billaha ah ee Soomaaliyeed (%)

	Isbedalka Billah ah (%)	Isbedalka Sanadlaha ah (%)
Seb-25	0.6%	3.9%
Agoos-25	0.0%	3.2%
Juulay-25	2.1%	2.7%

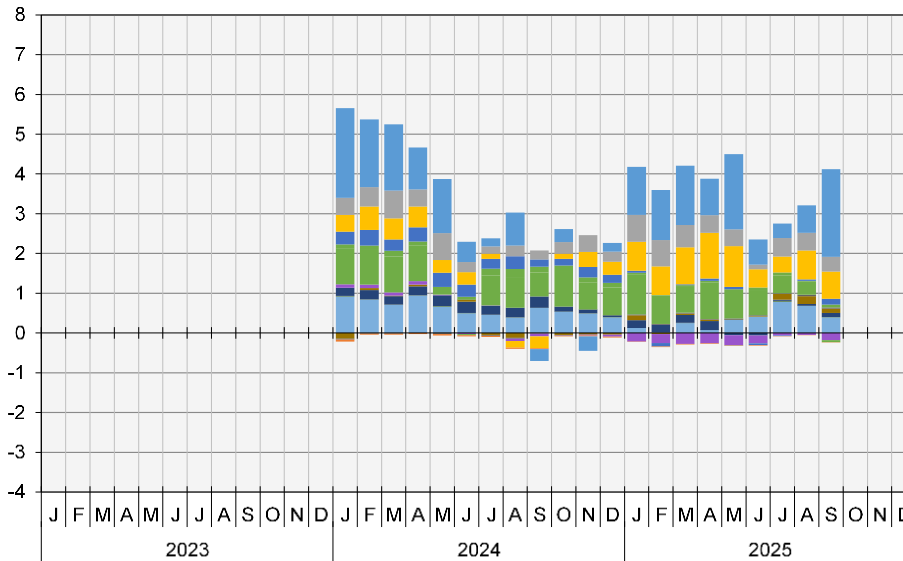
Warbixinta TSB-da ee Soomaaliyeed – Dhamaan qeybaha TSB-da

Jaantuska 1. Heerka sicir bararka marka loo eego TSB-da
Isbedelka boqoleyda ee 12 billood

Tixraaca TSB-da
Mudada Tixraaca = 2022



Jaantuska 2. qeybaha ka qeyb qaata (%) heerka sicir bararka (habka qeybinta)



- 01 - CUNTO IYO CABITAANNADA
- 02 - TUBAAKADDA
- 03 - DHARKA IYO KABAHA
- 04 - GURYAHA, BIYAHA, KORONTADA, GAASKA IYO SHIDAALKA KALE
- 05 - AGABKA, AGABKA GURIGA IYO DAYACTIRKA GURIGA EE JOOGTADA AH...
- 06 - ADEEGA CAAFIMAADKA
- 07 - GAADIIDKA
- 08 - MACLUUMAADKA IYO ISGAARINTA
- 09 - HAWA BEDELESHO, CIYAARAH IYO DHAQANKA
- 10 - ADEEGYADA WAXBARASHADA
- 11 - MAQAAYADAH IYO ADEEGYADA HOYGA
- 12 - CAYMISKA IYO ADEEGYADA MAALIYADA
- 13 - DARYEELKA SHAKHSIGA AH, DARYEELKA BULSHADA IYO ADEEGYADA YAR YAR...

War bixin Kooban ee Dhaqdhaqaaqa Sannadlaha ah

Muddo 12 bilood ah ilaa Sebtember 2025, TSB-da ayaa sare u kacay 3.9%.

Qiimo kororka ugu weyn ee Laba iyo tobankii bilood ee la soo dhaafay ayaa ahaa:

- Daryeelka Shakhshi ahaaneed, Ilaalinta Bulshada, Alaabooyinka iyo Adeegyada yar yar (+7.9%): Daryeelkashaqsiga (+8.88%), Agabka kale ee shaqsiga u gaarka ah(+4.94%).
- Madadaalada, ciyaarta iyo dhaqanka (+7.1%): alaabta dhaqanka (+12.60%).
- Adeegyada waxbarashada (+6.0%): Waxbarashada Hore ee Carruurnimada iyo Dugsiga Hoose (+7.77%); Waxbarashada aan lagu qeexin heer (+8.69%)
- Cuntada iyo cabitaanada (+4.8%): Cunto (+5.16%), Cabbitaannada (-4.41%).
- Caafimaadka (+4.5%):adeega daryeelka bukaan jiiifka (+26.13%); Daawooyin iyo Adeegyada Caafimaadka(+7.04%).

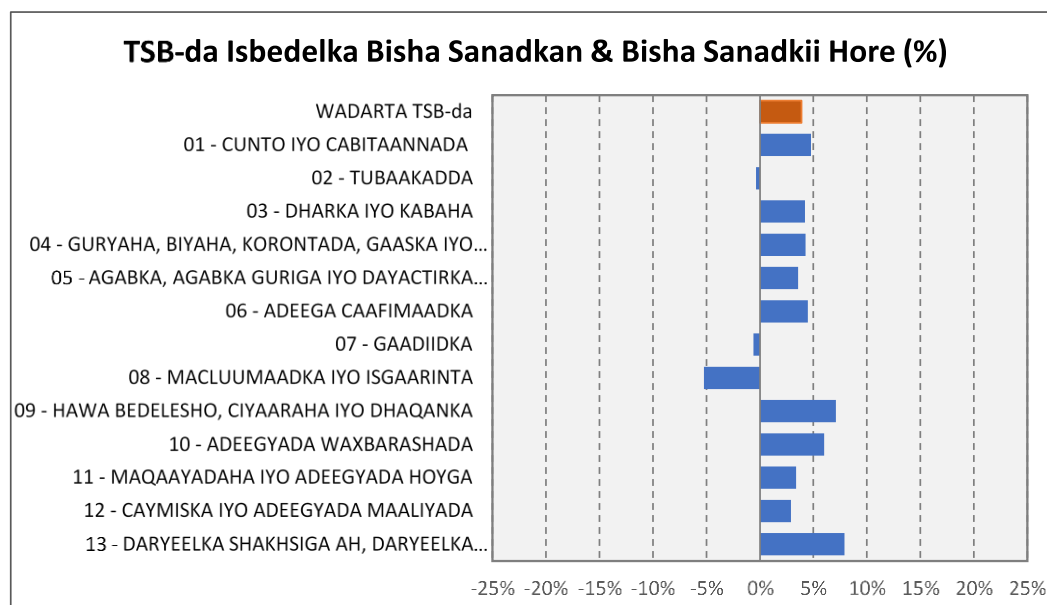
Hoos u dhaca ugu weyn Laba iyo tobankii bilood ee la soo dhaafay ayaa ahaa:

- Macluumaadka iyo Isgaarsiinta (-5.2%): Qalabka warfaafinta iyo isgaarsiinta (-11.75%).
- Gaadiidka(-0.6%): qalabka gaadiidka ee shaqsi ahaaneed (+2.49%).

Shaxda 2. boqolkiiba isbeddelka heerka qaybta sannadlaha ah

Qaybinta	% - isbeddel sannadle ah		
	Juulay-25	Agoos-25	Seb-25
Wadarta guud ee CPI	2.7%	3.2%	3.9%
01 - CUNTO IYO CABITAANNADA	0.8%	1.5%	4.8%
02 - TUBAAKADDA	-2.0%	-2.1%	-0.4%
03 - DHARKA IYO KABAHA	5.4%	5.1%	4.2%
04 - GURYAHA, BIYAHA, KORONTADA, GAASKA IYO SHIDAALKA KALE	2.5%	4.5%	4.3%
05 - AGABKA, AGABKA GURIGA IYO DAYACTIRKA GURIGA EE JOOGTADA AH...	-0.3%	1.0%	3.6%
06 - ADEEGA CAAFIMAADKA	4.2%	0.9%	4.5%
07 - GAADIIDKA	5.0%	3.6%	-0.6%
08 - MACLUUMAADKA IYO ISGAARINTA	-1.8%	-1.4%	-5.2%
09 – HAWA BEDELESHO, CIYAARAHA IYO DHAQANKA	5.6%	11.1%	7.1%
10 - ADEEGYADA WAXBARASHADA	8.1%	11.8%	6.0%
11 - MAQAAYADAHA IYO ADEEGYADA HOYGA	1.0%	1.3%	3.4%
12 - CAYMISKA IYO ADEEGYADA MAALIYADA	6.5%	1.7%	2.9%
13 - DARYEELKA SHAKHSIGA AH, DARYEELKA BULSHADA IYO ADEEGYADA YAR YAR...	16.7%	14.8%	7.9%

Jaantuska 3. Heerka qeybinta isbedelka boqoleyda ee Sanadlaha ah



Warbixin Kooban ee Dhaqdhaqaaqa Billaha ah

TSB-da ayaa bishan ayaa sare u kacay 0.6% .Sare u kaca ugu balaaran ayaa ka yimid:

Makhaayadaha iyo Adeegyada hoyga(+3.2%): adeega cuntada cabitaanka(+3.40%),Adeega hoyga (+2.36%).

Cuntada iyo cabitaanada (+2.1%), Cuntada(+2.13%), Cabbitaannada (+1.23%).

Madadaalada, Ciyaaraha iyo Dhaqanka (+1.3%): Madadaalada waarta (+1.20%); Agabka Dhaqanka(+1.26%).

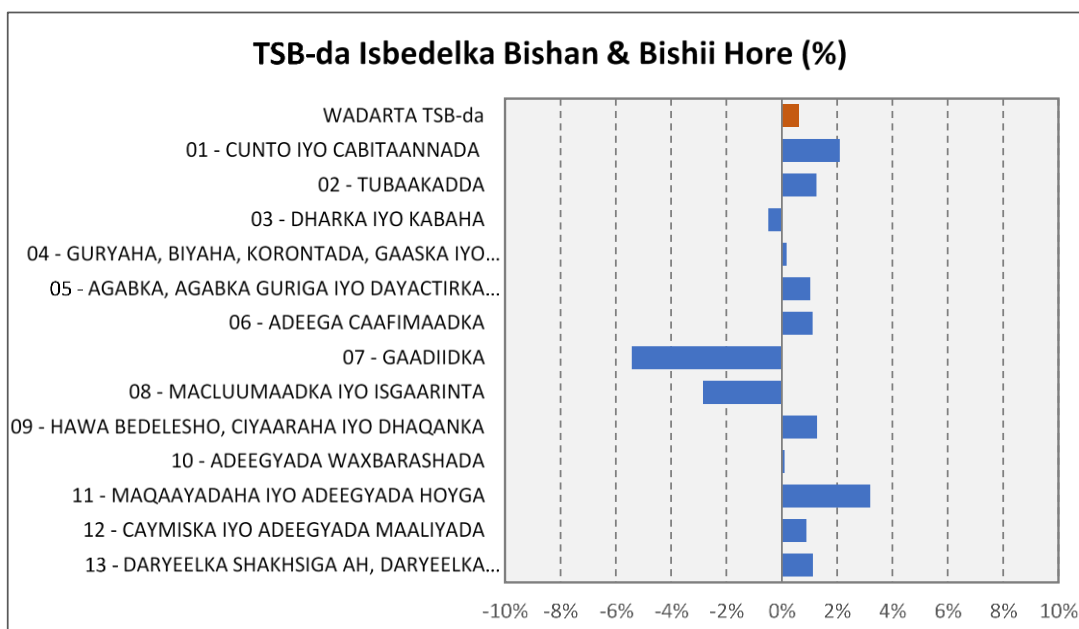
Tubaakada iyo Qaadka (+1.3%): Tubaakada (+6.76%); Qaadka(+0.14%).

Hoos u dhacii ugu badnaa bishaan ayaa ahaa:

- Macluumaadka iyo isgaarsinta (-2.9%): Adeega isgaarsinta macluumaadka(-4.11%).
- Gaadiidka (-5.4%):qalabka gaadiidka ee shaqsi ahaaneed(-6.55%).

Shaxda 3. heerka qaybta boqolkiiba isbeddelka bishii

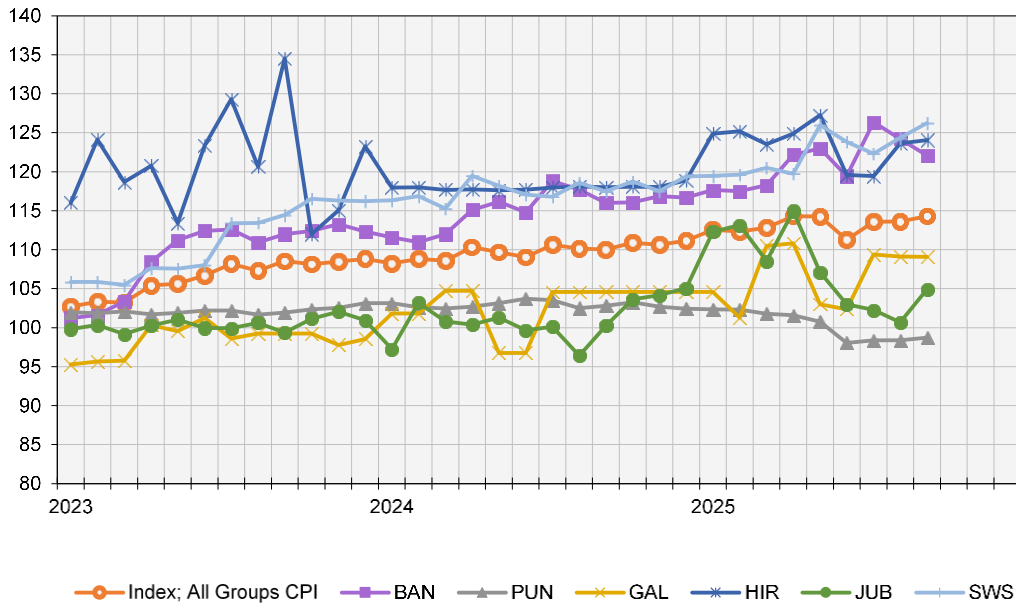
Qaybinta	%beddel bishiiba		
	Juulay 0-25	Agoos- 25	Seb-25
Wadarta guud ee CPI	2.1%	0.0%	0.6%
01 - CUNTO IYO CABITAANNADA	1.0%	0.9%	2.1%
02 - TUBAAKADDA	1.8%	0.6%	1.3%
03 - DHARKA IYO KABAHA	1.5%	-0.4%	-0.5%
04 - GURYAHA, BIYAHA, KORONTADA, GAASKA IYO SHIDAALKA KALE	1.1%	0.2%	0.2%
05 - AGABKA, AGABKA GURIGA IYO DAYACTIRKA GURIGA EE JOOGTADA AH...	1.6%	1.1%	1.0%
06 - ADEEGA CAAFIMAADKA	1.9%	0.4%	1.1%
07 - GAADIIDKA	7.0%	-1.4%	-5.4%
08 - MACLUUMAADKA IYO ISGAARINTA	4.8%	-0.4%	-2.9%
09 – HAWA BEDELESHO, CIYAARAHA IYO DHAQANKA	-3.0%	-0.4%	1.3%
10 - ADEEGYADA WAXBARASHADA	3.2%	-1.7%	0.1%
11 - MAQAAYADAHA IYO ADEEGYADA HOYGA	2.2%	0.0%	3.2%
12 - CAYMISKA IYO ADEEGYADA MAALIYADA	7.5%	-5.0%	0.9%
13 - DARYEELKA SHAKHSIGA AH, DARYEELKA BULSHADA IYO ADEEGYADA YAR YAR...	5.0%	-4.2%	1.1%

Jaantuska 4. Heerka qeybinta isbedelka boqoleyda ee Billaha ah

Warbixinta TSB-da Soomaaliyeed – Isbarbardhiga Dowlad goboleedyada.

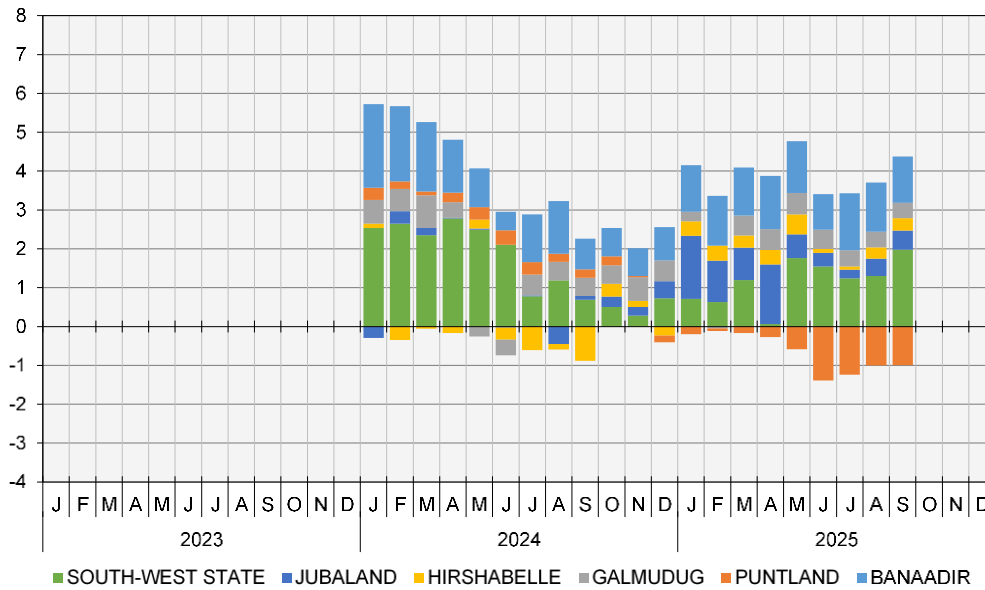
Jaantuska 5. T+BF3:BO22ixracra TSB-da ee dowlad goboleedyada (a)

Mudada Tixracra = 2022



(a) Tixracra Puntland waa la qiyaasay

Jaantuska 6. Qeybaha ka qeybqaata (%) heerka sicir bararka (qeybin heer dowlad goboleed) (a)



(a) Tixracra Puntland waa la qiyaasay

War bixin Kooban ee Dhaqdhaqaaqa Sanadlaha ah

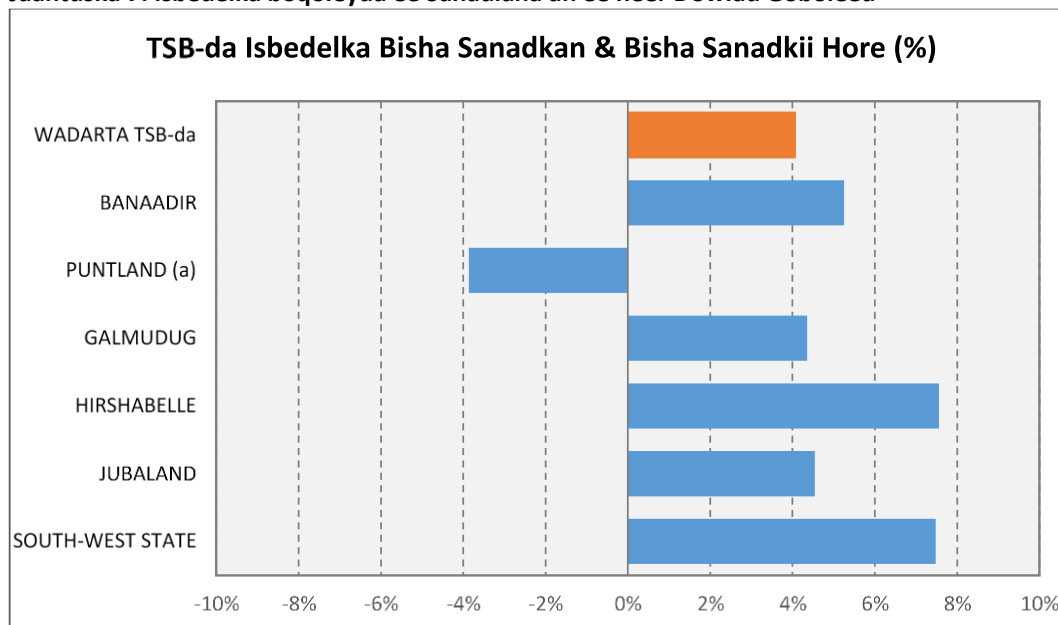
- Mudada 12 bilood ee la soo dhaafay ilaa Sebtember 2025 TSB-da, dhaqdhaqaaqyo sare u kac ah ayaa ka yimid
- Koofur galbeed (+7.5%): Madadaalada, Ciyaarta iyo Dhaqanka (+34.67%) iyo Gaadiidka(+20.62%).
- Banaadir (+5.3%): Adeegyada Waxbarashada (+13.36%), Dharka iyo Kabaha (+13.49%), Agabka, Qalabka Guriga ay qoysasu sida Joogtada ah u isticmaalaan (14.43%), aydoo ay hoos u dhaceen Warfaafinta iyo Isgaarsiinta (-19.31%).
- Hirshabelle (+5.1%): Daryeelka Shakhsi ahaaneed, Ilaalinta Bulshada iyo Adeegayada yar yar (+38.70%).
- Galmudug (+4.3%): Caafimaadka (+11.18%) ,Daryeelka Shakhsi ahaaneed, Ilaalinta Bulshada iyo Adeegayada yar yar(+7.53%).
- Jubaland (+4.7%): ahaa Makhaayadaha iyo Adeegyada hoyga (+35.25%), Guryaha, Biyaha, Korontada, Gaaska iyo Shidaalka kale(+16.17%), Dharka iyo Kabaha (+10.04%), aydoo Gadiidku hoos u dhacay (-15.74%).
- Putland (-4.0%), Cuntada iyo Cabitaanada (-3.6%).

Shaxda 4. Boqolkiiba isbeddelka heerka gobolka

Gobolka	% - isbeddel sannadle ah			
	25	Juulay-	Agoos 25	Seb- 25
Wadarta guud ee CPI		2.7%	3.2%	3.9%
BANAADIR		6.4%	5.5%	5.3%
PUNTLAND		-5.0%	-4.0%	-4.0%
GALMUDUG		4.6%	4.4%	4.3%
HIRSHABELLE		1.2%	4.7%	5.1%
JUBALAND		2.2%	4.4%	4.7%
KOONFUR-GALBEED		4.7%	4.9%	7.5%

(a) Tixraaca Puntland waa la qiyaasay

Jaantuska 7. isbedelka boqoleyda ee Sanadlaha ah ee heer Dowlad Goboleed



(a) Tixraca Puntland waa la qiyaasay

War bixin Kooban ee Dhaqdhaqaaqa Billaha ah

Intii lagu jiray bishii Sebteember 2025, dhaqdhaqaaqyo hoos u dhac ah ayaa ka yimid:

- Jubaland (+4.2%): ahaa Makhaayadaha iyo Adeegyada hoyga (+14.2.%)
- Koonfur-Galbeed (+1.5%):Madadaalada, Ciyaaraha iyo Dhaqanka (+3.5%)
- Puntland (+0.3%): Cuntada iyo Cabitaanada (-1.9%).
- Hirsabelle(+0.3%): Cuntada iyo Cabitaanada (-10.1%).
- Galmudug ayaa wax dhaqdhaqaaqa samayn (0.0%): Cuntada iyo cabitaanka aan khamriga ahayn (+6.6%), ahaa Makhaayadaha Iyo Adeegyada Hoyga(-5.4%)

Intii lagu jiray bishii Sebteember 2025, dhaqdhaqaaqyo hoos u dhac ah ayaa ka yimid

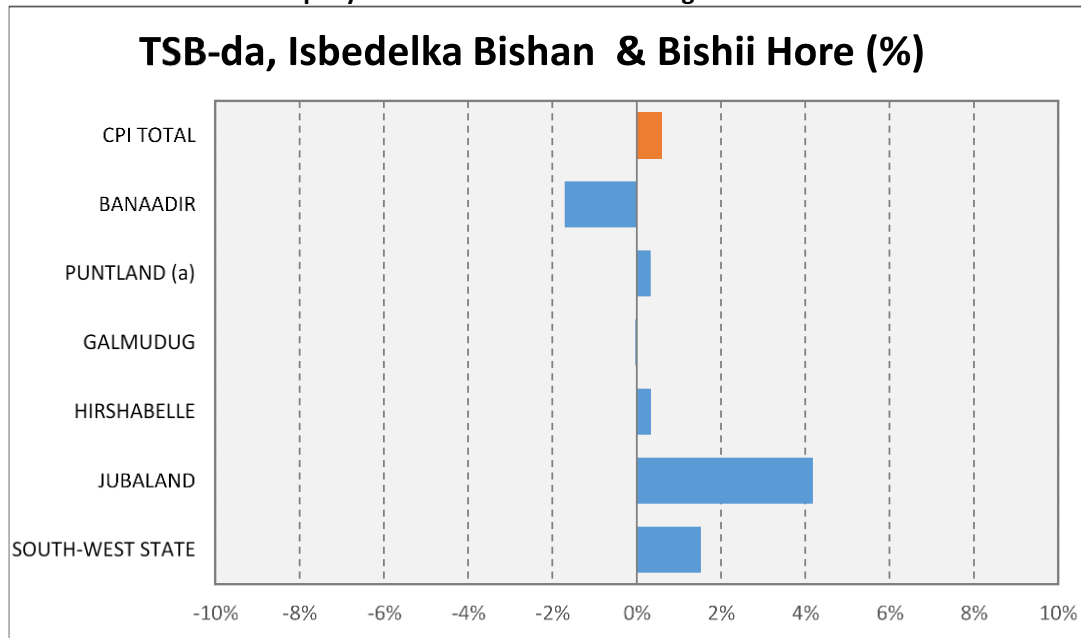
- Banaadir (-1.7%): gadiidka (-16.8%).

Shaxda 5. Heer gobol ayaa isbeddelay boqolkiiba bishii

Gobolka	%beddel bishiiba		
	Juul-25	Agoos-25	Seb-25
Wadarta guud ee CPI	2.1%	0.0%	0.6%
BANAADIR	5.8%	-1.7%	-1.7%
PUNTLAND	0.3%	0.0%	0.3%
GALMUDUG	6.9%	-0.2%	0.0%
HIRSHABELLE	-0.1%	3.5%	0.3%
JUBALAND	-0.7%	-1.5%	4.2%
GOBOLKA KOONFUR-GALBEED	-1.2%	1.7%	1.5%

(a) Tixraca Puntland waa la qiyaasay

Jaantuska 8. Isbedelka boqoleyda bilaha ah ee heer dowlad goboleed



(a) Tixraca Puntland waa la qiyaasay