

**SOMALI NATIONAL
BUREAU OF STATISTICS**
Federal Republic of Somalia

TUSAHA SICIRKA BADEECADAHA SOOMALIYA



NOFEEMBAR 2025

Tusaha Sicirka Badeecadaha, Soomaaliya

Hordhac

Tusaha Sicirka Badeecadaha (TSB) waa tilmaame dhaqaale oo muhiim ah oo hal beeg u ah isbeddelka guud ee isugeynta boqoleyda ee sicirka tafaariiqda ee badeecadaha iyo adeegyada ay iibsadaan qoysaska Soomaaliyeed. Waxay u adeegtaa sida qiyaasta asaasiga ah ee sicir bararka, ayada oo awood u siineysa siyaasad-dejiyeyaasha, ganacsiyada, iyo cilmi-baarayaasha si ay u qiimeeyaan isbeddellada ascaarta si ay u sameeyaan go'aamo dhaqaale oo maan-gal ah. Tan iyo Janaayo 2025, TSB-da Soomaaliya ayaa la sii daayay iyadoo la tixgelinayo hal beeg cusub oo laga soo qaatay Sahan Kharashaadka Qoysaska Soomaaliya ee 2022 (SIHBS), iyadoo lagu lifaaqaayo kalasaarida cusub ee kharashka qoysaska (COICOP 2018), kana turjumeyso dhammaan Doladaha Xubnaha ka ah Dowlada Federaalka ah ee Soomaaliya. qoraal ku saabsan habraaca ayaa lagu soo bandhigi doonaa Bogga Internet-ka ee SNBS.

Tusaha Sicirka Badeecadaha (TSB) waxaa lagu qeexay sidan:

"Cabbirka celceliska Hal beega isbedelka qiimaha tafaariiqda ee ay macaamiishu ku bixiyeen agabka iyo adeegyada mudo cayiman." meelaha ugu muhimsan ee TSB-da loo adeegsan karo waxaa ka mid ah:

- Cabirka Sicir-bararka: Sicir-bararka sannadlaha ah (YoY) wuxuu isbarbar dhigayaa qiimaha hadda ee sanadkan iyo isla qiimahaas sannadkii hore, isagoo u adeegaya sida agab loogu talagalay siyaasadda lacagta iyo maaliyadda.
- Go'aan-qaadasho Dhaqaale: Waxaa isticmaala hay'adaha dawladda, ganacsiyada, iyo hay'adaha caalamiga ah si ay ugu jaan gooyaan mushaharka, qandaraasyada, iyo ka faa'iidooyinka bulshada.
- Falanqeynta Dhaqaalaha Balaaran: Waxay taageertaa qiimeynta awoodda wax iibsiga, hagaajinta qiimaha kharashka-nololeed, iyo xasiloonida dhaqaalaha.

Hab Ururinta Qiimaha:

- Si joogta ah: Waxa loo sameeyaa toddobaadka ugu horreeya iyo kan saddexaad ee bil kasta.
- Deeganada laga soo uruuriyo: Muqdisho (Caasimadda), Dhammaan Dawladaha Xubnaha ka ah Dawladda Federaalka (FMS).
- Ashyaada ama badeecadaha: 537 shey, oo laga soo xulay Sahankii 2022 SIHBS, oo lagu kala saaray nidaamka Kala-soocidda Qaybaha Isticmaalka Qofka (COICOP) 2018 oo ka kooban 13 qaybood.

Istaatistikada Muhiimka ah

Sannadle

Laba iyo tobankii bilood ee la soo dhaafay ilaa Nofeember 2025, TSB-da yaa sare u kacay 4.8%.

- Qiimaha kororka ugu weyn ee laba iyo tobankii bilood ayaa ahaa Daryeelka Shakhshi ahaaneed, Makhaayadaha iyo Adeegyada hoyga (+14.6%), ilaalinta Bulshada iyo Alaabaha(+11.9%) Cuntada iyo cabitaanada (+6.1%), Adeegyada waxbarashada (+5.1%) Caafimaadka (+4.3%).
- Waxaa hoos u dhacay Qaaka iyo Tubaakada (-2.7%) Macluumaadka iyo Isgaarsiinta (-1.8%), Gaadiidka (-3.6%).
- Qiima kororka ayaa saameeyey dhamaan dowlad goboleedyada bishii Nufeember, Koonfur-Galbeed (+9.1%), Banadir (+5.2%), Hirshabeelle (+6.6%), Jubaland (+4.8%), Galmudug (+4.2%).
- Hoos u dhac yar ee Putland (-2.2%) ayaa saameyn yeeshay sababo la xariira miisaankiisa weyn.

Bille

Tusaha Sicirka Badeecadaha (TSB) waxuu kordhay 0.6% bishan.

- Qiimaha kororka ugu badanaa ee bishan ayaa ahaa Makhaayadaha iyo adeegyada hoyga (+8.8%), Macluumaadka iyo Isgaarsiinta (+4.8%), gadiidka(+2.9%).
- Waxaa hoos u dhacay Agabka, Qalabka Guriga ay qoysasu sida Joogtada ah u isticmaalaan (-4.1%), Tubaakadda iyo Qaadka (-2.9%).
- Qiima kororka ugu badan ee dawlad goboleedyada wuxuu ka yimid Hirshabelle (+1.3%), Kaliya Galmudug ayaa diiwaangelisay hoos-u-dhac yar marka loo eego bisha Galmudug (-0.1%).

• Shaxda 1. TSB, Dhaqdhaqaaqyada Sanadlaha & Billaha ah ee Soomaaliyeed (%)

	Isbedalka Billah ah (%)	Isbedalka Sanadlah ah (%)
Nof-25	0.6%	4.8%
Okt-25	0.7%	3.9%
Seb-25	0.7%	4.1%

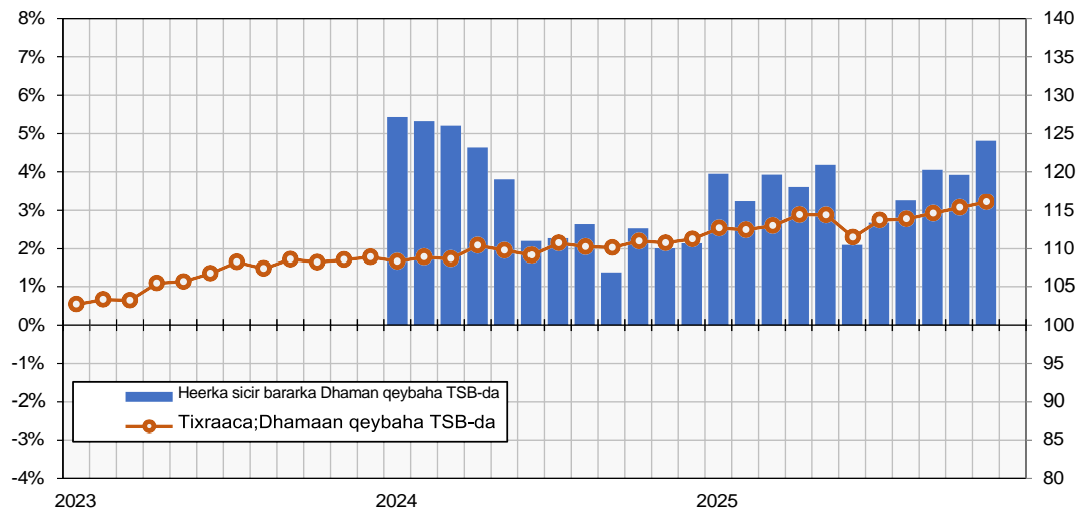
Warbixinta TSB-da ee Soomaaliyeed – Dhamaan qeybaha TSB-da

Jaantuska 1. Heerka sicir bararka marka loo eego TSB-da

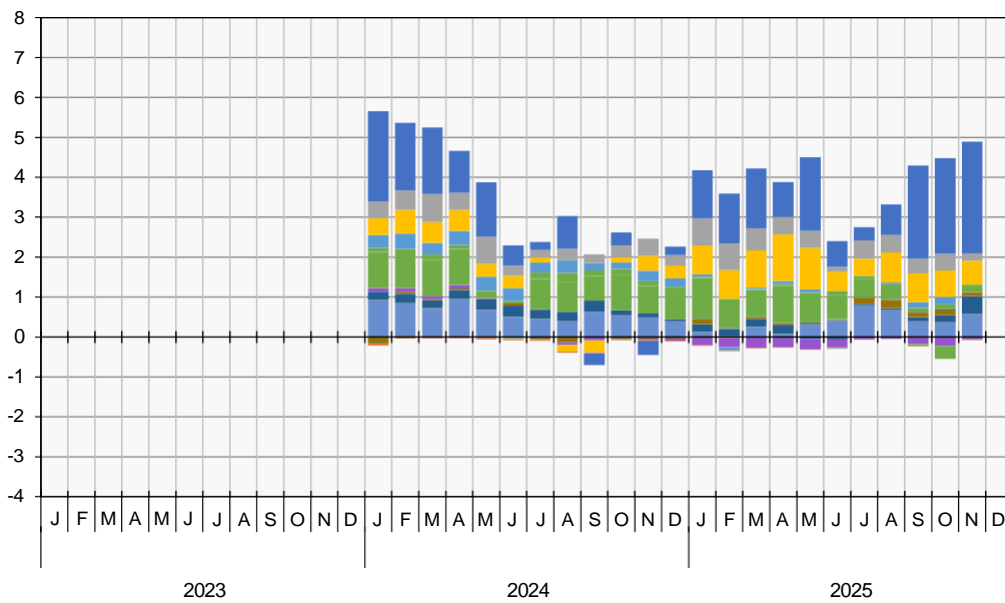
Isbadalka boqoleyda ee 12 bilood

Tixraaca TSB-da

Mudada tixraaca = 2022



Jaantuska 2. Qeybaha ka qeybqaata (%) heerka sicir bararka (heerka qeybinta)



- 01 – CUNTO IYO CABITAANNADA
- 02 - TUBAAKADA
- 03 – DHARKA IYO KABAHA
- 04 – GURYAHA, BIYAHA, KORONTADA, GAASKA IYO SHIDAALKA KALE
- 05 – AGABKA, AGABKA GURIGA IYO DAYACTIRKA GURIGA EE JOOGTADA AH
- 06 - CAAFIMAADKA
- 07 - GAADIIDKA
- 08 – MACLUUMAADKA IYO ISGAARSIINTA
- 09 – MADADAALADA CIYAARAHA IYO DHAQANKA
- 10 – ADEEGYADA WAXBARASHADA
- 11 – MAKHAAYADAHA IYO ADEEGYADA HOYGA
- 12 – CAYMISKA IYO ADEEGYADA MAALIYADA
- 13 – DARYEELKA SHAQSIGA AH DARYEELKA BULSHADA IYO ADEEGYADA YAR YAR

War bixin Kooban ee Dhaqdhaqaaqa Sannadlaha ah

Muudo 12 bilood ah ilaa Nofeember 2025, TSB-da ayaa sare u kacay 4.8%.

Qiimo kororka ugu weyn Laba iyo tobankii bilood ee la soo dhaafay ayaa ahaa:

- Daryeelka Shakhshi ahaaneed, Ilaalinta Bulshada, Alaabooyinka iyo Adeegyada yar yar (+11.9%): Daryeelkashaqsiga (+13.16%), Agabka kale ee shaqsiga u gaarka ah (+3.87%).
- Makhaayadaha iyo Adeegyada hoyga: (+14.6%), Makhaayadaha(+16.61%); Adeegyada hoyga: (+6.00%).
- Cuntada iyo cabitaanada (+6.1%): Cunto (+6.41%), Cabbitaannada ayaa hoos u dhacy (-2.3%).
- Adeegyada waxbarashada (+5.1%): Waxbarashada Hore ee Carruurnimada iyo Dugsiga Hoose (+8.69%) Waxbarashada aan lagu qeexin heer (+6.10%).
- Caafimaadka (+4.3%):adeega daryeelka bukaan jifka(+20.84%);Daawooyin iyo Adeegyada Caafimaadka(+7.58%).

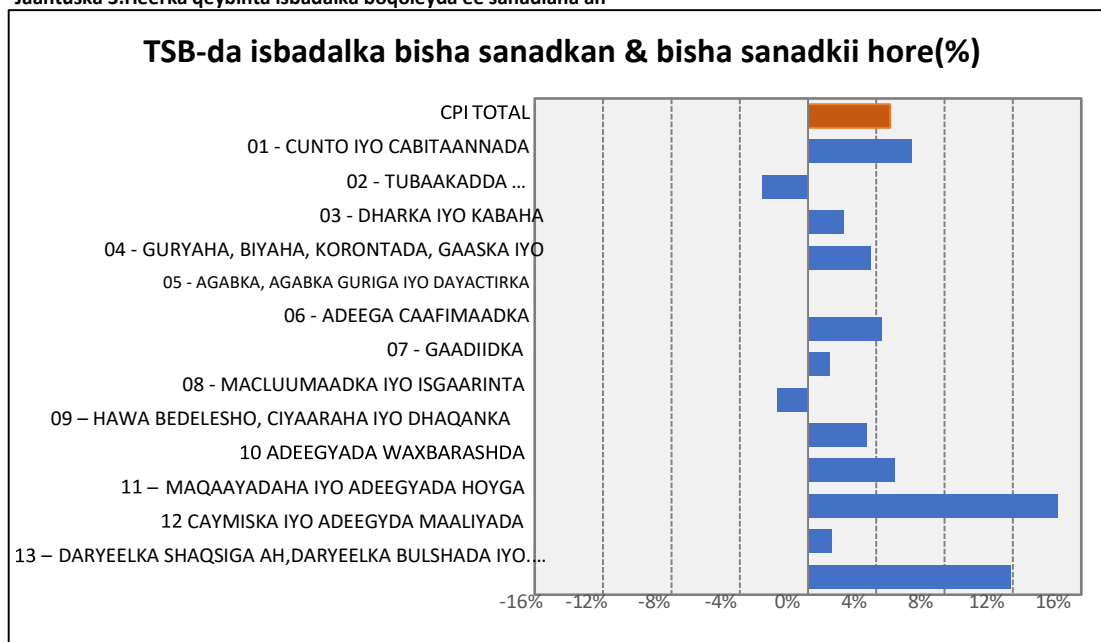
Hoos u dhaca ugu weyn Laba iyo tobankii bilood ee la soo dhaafay ayaa ahaa:

- Tubaakada iyo jaadka(-2.7%): Tubaakada(-4.4%); Qaadka(+6.14%).
- Macluumaadka iyo Isgaarsiinta (-1.8%): Macluumaadka iyo Qalabka isgaarsiinta (-15.15%).

Shaxda 2. boqolkiiba isbeddelka heerka qaybta sannadlaha ah

Qaybinta	% - isbeddel sannadle ah		
	Seb-25	Okt-25	Nuf-25
WADARTA GUUD EE TSB-da	4.1%	3.9%	4.8%
01 - CUNTO IYO CABITAANNADA	5.1%	5.2%	6.1%
02 - TUBAAKADDA	-0.4%	0.0%	-2.7%
03 - DHARKA IYO KABAHA	4.2%	4.8%	2.1%
04 - GURYAHA, BIYAHA, KORONTADA, GAASKA IYO SHIDAALKA KALE	4.4%	4.1%	3.7%
05 - AGABKA, AGABKA GURIGA IYO DAYACTIRKA GURIGA EE JOOGTADA AH...	3.7%	4.7%	0.0%
06 - ADEEGA CAAFIMAADKA	5.4%	7.5%	4.3%
07 - GAADIIDKA	-0.6%	-3.6%	1.3%
08 - MACLUUMAADKA IYO ISGAARINTA	-5.2%	-6.6%	-1.8%
09 – HAWA BEDELESHO, CIYAARAHA IYO DHAQANKA	6.9%	8.0%	3.4%
10 - ADEEGYADA WAXBARASHADA	6.0%	7.0%	5.1%
11 - MAQAAYADAHADA IYO ADEEGYADA HOYGA	3.4%	5.3%	14.6%
12 - CAYMISKA IYO ADEEGYADA MAALIYADA	1.1%	0.6%	1.4%
13 - DARYEELKA SHAKHSIGA AH, DARYEELKA BULSHADA IYO ADEEGYADA YAR YAR...	7.9%	7.5%	11.9%

Jaantuska 3.Heerka qeybinta isbadalka boqoleyda ee sanadlaha ah



Warbixin Kooban ee Dhaqdhaqaaqa Billaha ah

TSB-da ayaa bishan sare u kacay 0.6% .Sare u kaca ugu balaaran ayaa ka yimid:

- Makhaayadaha iyo Adeegyada hoyga (+8.8%): adeega cuntada iyo cabitaanka(+10.89%);Adeega hoyga (-0.27%).
- Macluumaadka iyo Isgaarsiinta (+4.8%): Macluumaadka iyo Qalabka isgaarsiinta (+6.23%).
- gadiidka(+2.9%): isticmaalka iyo dayactirka gaadiidka shakhsiga ah (+3.12%)

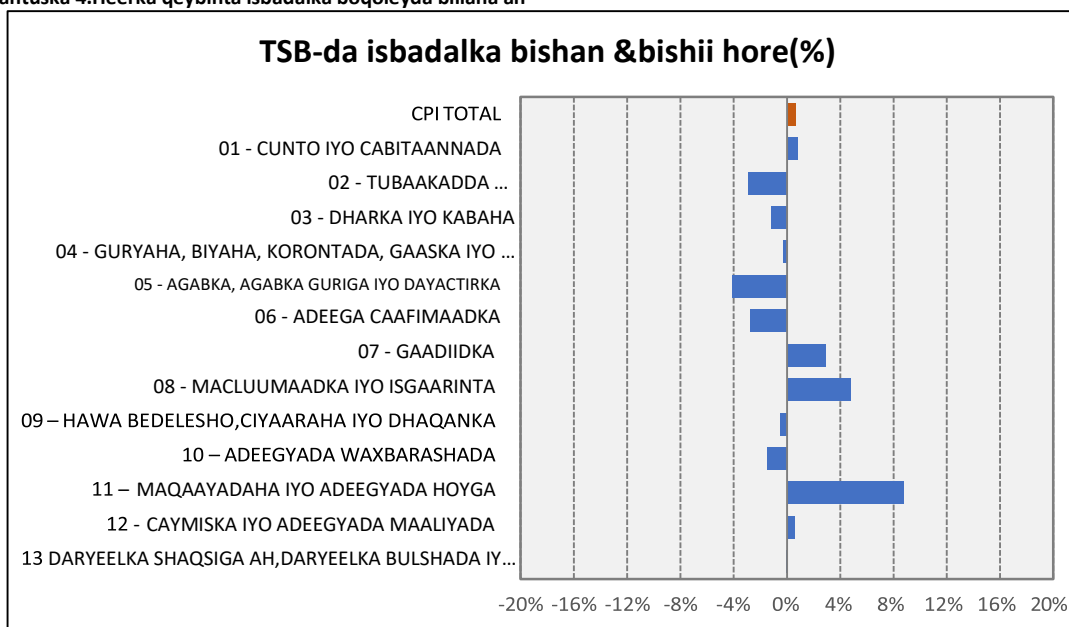
Hoos u dhaca ugu weyn Laba iyo tobankii bilood ee la soo dhaafay ayaa ahaa:

- Tubaakada iyo Qaadka (-2.9%) Qaadka (-2.78%); Tubaakada (-3.66%).
- Agabka, Qalabka Guriga ay qoysasku sida Joogtada ah u isticmaalaan(-4.1%): Alaabooyinka iyo adeegyada qoysasku dayactirka Joogtada ah u isticmaalaan (-8.98%); Qalabka Guriga iyo beeraha (-7.98%).

Shaxda 3. heerka qaybta boqolkiiba isbeddelka bishii

Qaybinta	%beddel bishiiba		
	Sep-25	Oct-25	Nof-25
Wadarta guud ee CPI	0.7%	0.7%	0.6%
01 - CUNTO IYO CABITAANNADA	2.2%	0.5%	0.8%
02 - TUBAAKADDA	1.3%	0.7%	-2.9%
03 - DHARKA IYO KABAHA	-0.5%	0.9%	-1.2%
04 - GURYAHA, BIYAHA, KORONTADA, GAASKA IYO SHIDAALKA KALE	0.2%	1.4%	-0.3%
05 - AGABKA, AGABKA GURIGA IYO DAYACTIRKA GURIGA EE JOOGTADA AH...	1.0%	1.0%	-4.1%
06 - ADEEGA CAAFIMAADKA	1.1%	0.1%	-2.7%
07 - GAADIIDKA	-5.4%	0.1%	2.9%
08 - MACLUUMAADKA IYO ISGAARINTA	-2.9%	0.1%	4.8%
09 – HAWA BEDELESHO, CIYAARAHA IYO DHAQANKA	1.3%	0.3%	-0.5%
10 - ADEEGYADA WAXBARASHADA	0.1%	0.5%	-1.5%
11 - MAQAAYADAHADA IYO ADEEGYADA HOYGA	3.2%	1.2%	8.8%
12 - CAYMISKA IYO ADEEGYADA MAALIYADA	0.8%	-0.1%	0.6%
13 - DARYEELKA SHAKHSIGA AH, DARYEELKA BULSHADA IYO ADEEGYADA YAR YAR...	1.1%	0.4%	0.0%

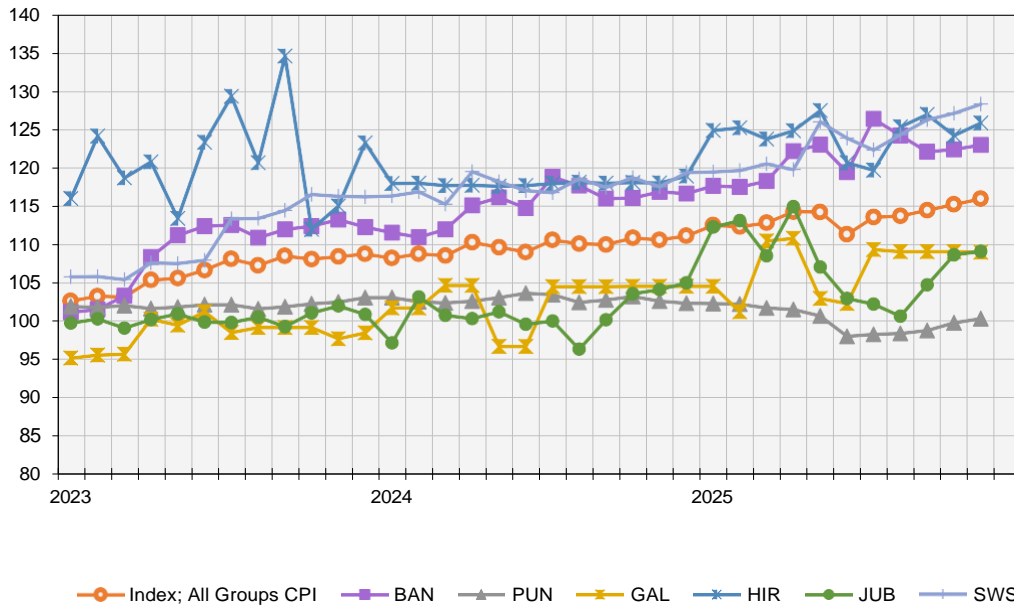
Jaantuska 4.Heerka qeybinta isbadalka boqoleyda billaha ah



WARBIXINTA TSB-DA SOOMAALIYEED – ISBARBARDHIGA DOWLAD GOBOLEEDYADA.

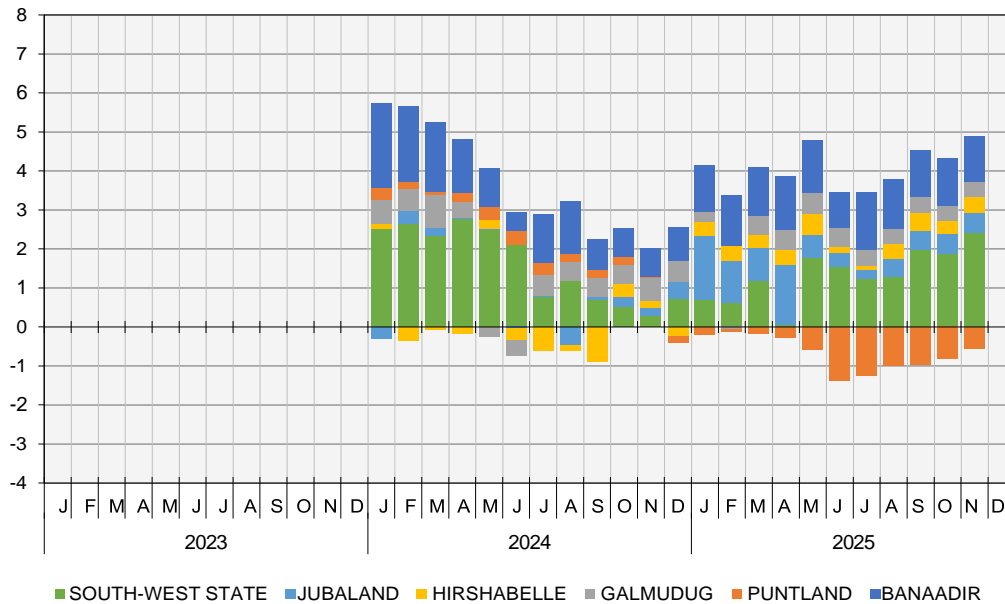
Jaantuska 5. Tixraaca TSB-da ee heer goboleed (a)

Mudada tixraaca = 2022 Jaantuska 5.



(a) Puntland indices have been estimated

Jaantuska 6. Qeybaha ka qeybqaata(%)heerka sicir bararka (qeybin heer goboleed)(a)



(a) Tixraaca Puntland waa la qiyaasa

War bixin Kooban ee Dhaqdhaqaaqa Sanadlaha ah

- Mudada 12 bilood ee la soo dhaafay ilaa Nofember 2025 TSB-da, dhaqdhaqaaqyo sare u kac ah ayaa ka yimid
- Koofur galbeed (+9.1%): Daryeelka Shakhsi ahaaneed, Ilaalinta Bulshada iyo Adeegayada yar yar(+24.08%),Gadiidka(+20.46%).
- Madadaalada, Ciyaarta iyo Dhaqanka (+32.86%), iyo Cuntada iyo Cabitaanada(+11.10%).
- Banaadir (+5.2%):Adeegyada Waxbarashada (+13.77%),Agabka, Qalabka Guriga ay qoysasu sida Joogtada ah u isticmaalaan (+12.98%), Makhaayadaha iyo Adeegyada hoyga (+11.28%),aydoo ay hoos u dhaceen Warfaafinta iyo Isgaarsiinta (-24.67%).
- Hirshabelle (+6.6%): Daryeelka Shakhsi ahaaneed, Ilaalinta Bulshada iyo Adeegayada yar yar (+59.34%),Gadiidka(+57.77%).
- Jubaland (+4.8%): Makhaayadaha iyo Adeegyada hoyga (+45.91%), Cuntada iyo Cabitaanada (+9.62%), Gadiidka(-22.4%).
- Galmudug (+4.2%):Caafimaadka (+10.53%),Daryeelka Shakhsi ahaaneed, Ilaalinta Bulshada iyo Adeegayada yar yar(+6.96%).

Bishii Nufeember 2025, dhaqdhaqaaq hoos-u-dhac ah ayaa ka yimid:

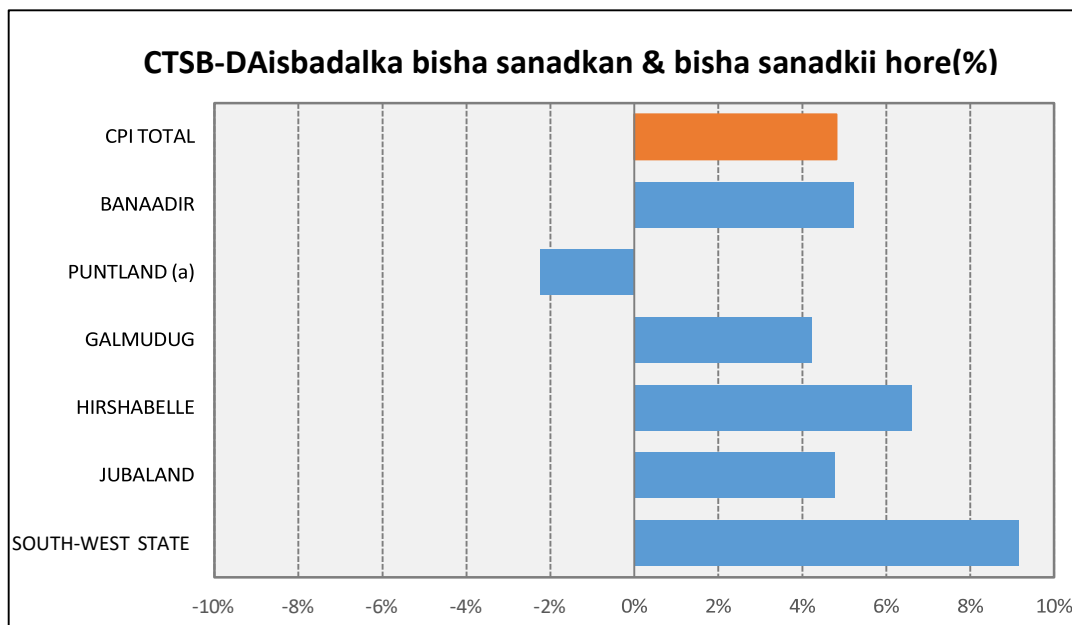
- Putland (-2.2%):Cuntada iyo Cabitaanada (-4.5%).

Shaxda 4. Boqolkiiba isbeddelka heerka gobolka

Gobolka	% - isbeddel sannadle ah		
	Sep-25	Oct-25	Nuf-25
Wadarta guud ee CPI	4.1%	3.9%	4.8%
BANAADIR	5.3%	5.4%	5.2%
PUNTLAND	-3.9%	-3.3%	-2.2%
GALMUDUG	4.3%	4.3%	4.2%
HIRSHABELLE	7.6%	5.2%	6.6%
JUBALAND	4.5%	4.8%	4.8%
KOONFUR-GALBEED	7.5%	7.0%	9.1%

V(a) Tixraca Puntland waa la qiyaasay

Jaantuska 7. Isbadalka boqoleyda sanadlaha ah ee heer dowlad goboleed



(a) Tixraca Puntland waa la qiyaasay

War bixin Kooban ee Dhaqdhaqaaqa Billaha ah

Intii lagu jiray bishii Nofeember 2025, dhaqdhaqaaqyo hoos u dhac ah ayaa ka yimid:

- Jubaland (+0.4%): Makhaayadaha Iyo Adeegyada Hoyga(+10.1%).
- Puntland (+0.5%):Makhaayadaha Iyo Adeegyada Hoyga (+8.3%).
- Koonfur-Galbeed (+0.9%): Makhaayadaha Iyo Adeegyada Hoyga(+22.0%).
- Banaadir (+0.5%): Guryaha, Biyaha, Korontada, Gaaska iyo Shidaalka kale (+4.0%).

Intii lagu jiray bishii Nofeember 2025, dhaqdhaqaaqyo hoos u dhac ah ayaa ka yimid

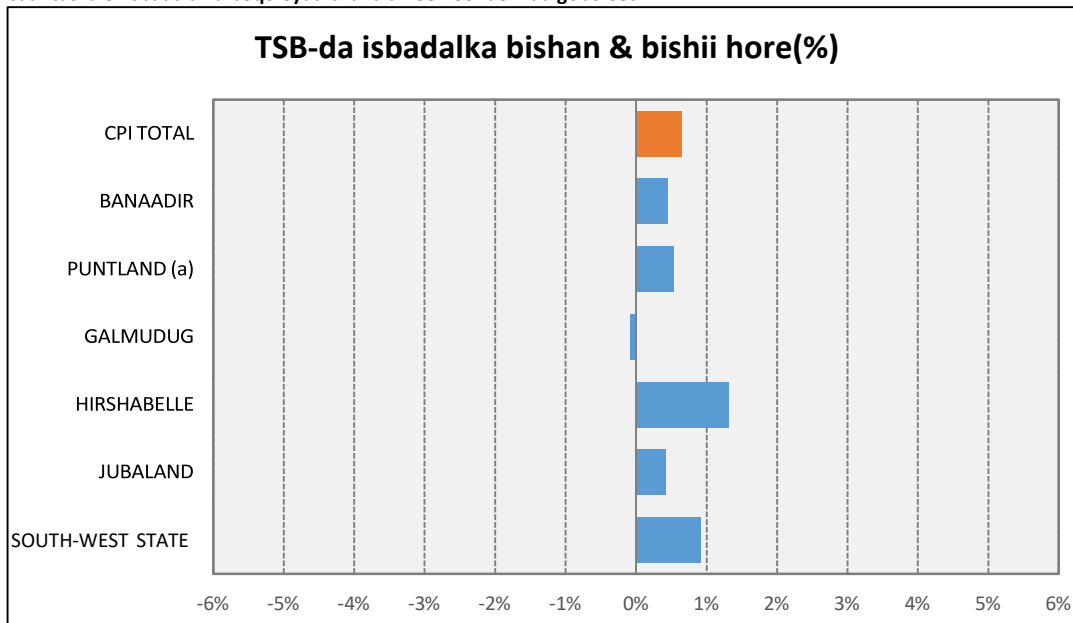
- Galmudug(-0.1%): Makhaayadaha Iyo Adeegyada Hoyga(-0.5%).

Shaxda 5. Heer gobol ayaa isbeddelay boqolkiiba bishii

Gobolka	%beddel bishiiba		
	Sep-25	Okt-25	Nof-25
Wadarta guud ee CPI	0.7%	0.7%	0.6%
BANAADIR	-1.7%	0.3%	0.5%
PUNTLAND	0.4%	1.0%	0.5%
GALMUDUG	0.0%	0.0%	-0.1%
HIRSHABELLE	1.3%	-2.2%	1.3%
JUBALAND	4.1%	3.7%	0.4%
GOBOLKA KOONFUR-GALBEED	1.5%	0.7%	0.9%

(a) Tixraaca Puntland waa la qiyaasay

Jaantuska 8. Isbadalalka boqoleyda bilaha ah ee heer dowlad goboleed



(a) Tixraaca Puntland waa la qiyaasey