



**SOMALI NATIONAL
BUREAU OF STATISTICS**
Federal Republic of Somalia

CONSUMER PRICE INDEX

SOMALIA



APRIL 2026

Consumer Price Index, Somalia

Foreword

The Consumer Price Index (CPI) is a key economic indicator that measures the weighted aggregate change in retail prices of goods and services purchased by households in Somalia. It serves as the primary gauge of inflation, enabling policymakers, businesses, and researchers to assess price trends and make informed economic decisions.

Since January 2025, Somalia CPI is released considering new weights derived from 2022 Somalia Integrated Households' Budget Survey (SIHBS), adopting the new households' consumption classification (COICOP 2018), and representing all the Federal Members States. A Methodological Note will be made available on the SNBS web site.

The CPI is defined as:

"A measure of the weighted average change in retail prices paid by consumers for a fixed basket of goods and services over time." Key uses of CPI include:

- Inflation Measurement: The year-on-year (YoY) inflation rate compares current price levels to the same period in the previous year, serving as a tool for monetary and fiscal policy.
- Economic Decision-Making: Used by government agencies, businesses, and international organizations to adjust wages, contracts, and social benefits.
- Macroeconomic Analysis: Supports the evaluation of purchasing power, cost-of-living adjustments, and economic stability.

Price Collection Process:

- Frequency: Conducted during the first and third weeks of each month.
- Geographic Coverage: Mogadishu (Capital City), All Federal Member States (FMS).
- Commodity Coverage: 537 items, identified through the 2022 SIHBS, and classified by the Classification of Individual Consumption by Purpose (COICOP) 2018 across 13 divisions.

Key statistics

Annual (April 2026)

Over the twelve months to April 2026, the CPI rose 8.1% (slightly higher than 7.9% in March 2026). The most significant price rises over the twelve months were:

Health (+14.5%): Inpatient Care Services (+18.5%), Medicine and Health Services (+14.9%). Recreation, Sport and Culture (+12.7%).

Restaurants and Accommodation Services (+12.2%): Restaurant Services (+15%), Accommodation Services (+0.02%).

Education Services (+12.2%): Early childhood and primary education (+14.9%). Housing, Water, Electricity, Gas and Other Fuels (+12.1%): Water Supply (+18.3%), Electricity (+15.7%). (This division accelerated compared to March's +8.9% annual rise.)

Food and Non-Alcoholic Beverages (+8.1%): Cereals (+18.5%), Bread & Bakery (+19.8%). Transport (+6.0%): Operation of Personal Transport Equipment (+32.4%). (Stronger than March's +4.7% annual increase.)

There were no negative movements during April 2026.

State-level increases (highest to lowest):

Galmudug (+9.9%), South-West State (+9.1%), Puntland (+8.1%) (up from +6.5% in March), Banadir (+7.5%), Jubaland (+6.6%), Hirshabelle (+6.1%)

Monthly (April 2026)

The CPI increased by 1.5% in April 2026 (slower than 2.4% in March 2026). The most significant price rises this month were:

Recreation, Sport and Culture (+6.3%). (A sharp rise compared to March's +2.2%). Housing, Water, Electricity, Gas and

Other Fuels (+4.9%): Electricity (+6.2%), Rent (+5.5%). Transport (+4.4%): Passenger transport services (+7.6%), Fuel

(+6.8%). (Growth eased compared to March's +7.6%). Personal Care, Social Protection and Miscellaneous (+3.4%).

Offsetting declines: Restaurants and Accommodation Services (-3.5%). (Reversed from March's +2.6% monthly rise.),

Clothing and Footwear (-2.1%)., Education Services (-1.7%).

State-level increases (highest to lowest):

Jubaland (+5.1%) (strong rebound from March's -2.1%), Banadir (+2.3%), Puntland (+1.3%), Galmudug (+1.2%),

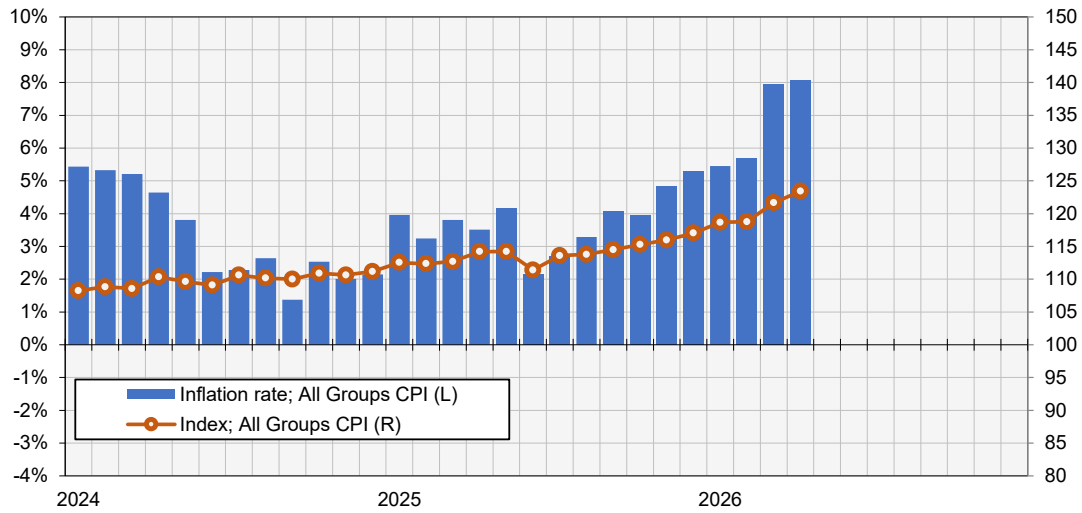
Table 1. CPI, Somalia monthly and annual movements (%)

	Monthly change (%)	Annual change (%)
Apr-26	1.5%	8.1%
Mar-26	2.4%	7.9%
Feb-26	0.1%	5.7%

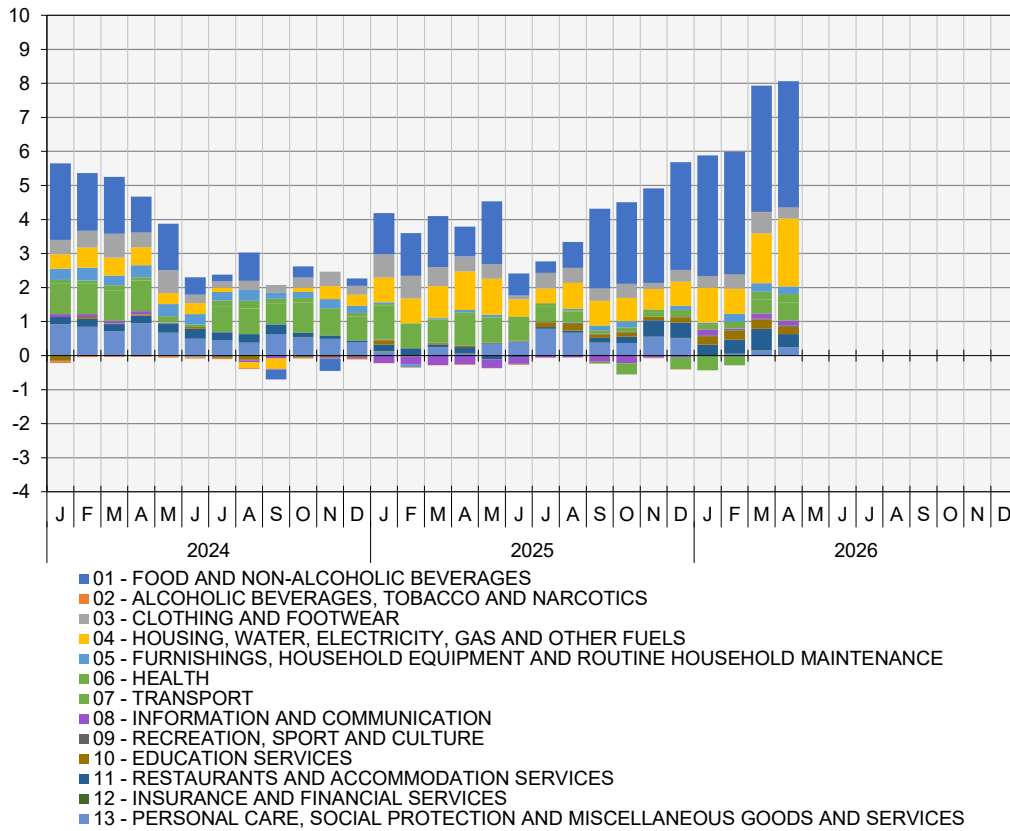
SOMALIA CPI REPORT - ALL DIVISIONS CPI

Graph 1. Inflation rate according to CPI
Percent change over twelve months

CPI Index
Index Reference Period = 2022



Graph 2. Points contribution (%) to inflation rate (contribution by division)



Summary of annual movement

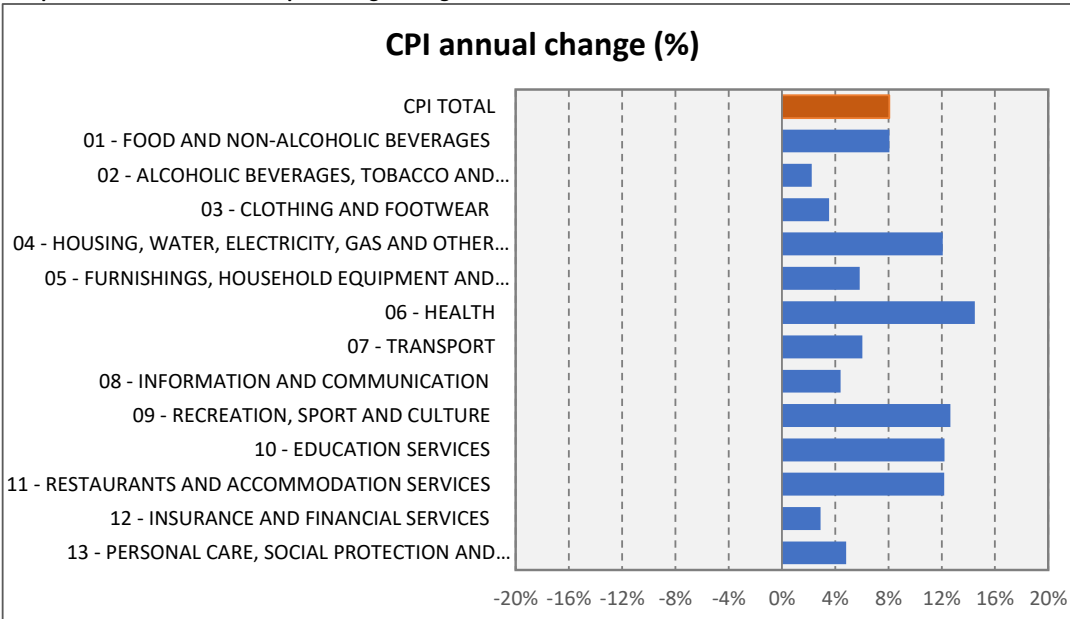
Over the twelve months to April 2026, the CPI rose 8.1%. The most significant price rises over the twelve months were: Health (+14.5%): Inpatient Care Services (+18.5%) and Medicine and Health Services (+14.9%). Recreation, Sport and Culture (+12.7%): driven by Other recreational goods (+10.9%). Restaurants and Accommodation Services (+12.2%): Accommodation Services (+0.02%), Restaurant Services (+15%). Education Services (+12.2%): led by Early childhood and primary education (+14.9%). Housing, Water, Electricity, Gas and Other Fuels (+12.1%): driven by Water Supply (+18.3%) and Electricity (+15.7%). Food and Non-Alcoholic Beverages (+8.1%): driven by Cereals (+18.5%) and Bread & Bakery (+19.8%). Transport (+6.0%): mainly from Operation of Personal Transport Equipment (+32.4%).

There were no negative movements during April 2026

Table 2. Division level annual percentage change

Division	% -change annual		
	Feb-26	Mar-26	Apr-26
CPI TOTAL	5.7%	7.9%	8.1%
01 - FOOD AND NON-ALCOHOLIC BEVERAGES	7.8%	8.0%	8.1%
02 - ALCOHOLIC BEVERAGES, TOBACCO AND NARCOTICS	1.3%	2.3%	2.2%
03 - CLOTHING AND FOOTWEAR	4.7%	6.9%	3.5%
04 - HOUSING, WATER, ELECTRICITY, GAS AND OTHER FUELS	4.5%	8.9%	12.1%
05 - FURNISHINGS, HOUSEHOLD EQUIPMENT AND ROUTINE HOUSEHOLD MAI	6.1%	6.3%	5.8%
06 - HEALTH	12.2%	13.7%	14.5%
07 - TRANSPORT	-3.2%	4.7%	6.0%
08 - INFORMATION AND COMMUNICATION	1.2%	5.1%	4.4%
09 - RECREATION, SPORT AND CULTURE	4.5%	6.5%	12.7%
10 - EDUCATION SERVICES	14.9%	14.9%	12.2%
11 - RESTAURANTS AND ACCOMMODATION SERVICES	12.8%	20.9%	12.2%
12 - INSURANCE AND FINANCIAL SERVICES	1.6%	3.1%	2.9%
13 - PERSONAL CARE, SOCIAL PROTECTION AND MISCELLANEOUS GOODS ANI	1.2%	2.9%	4.8%

Graph 3. Division level annual percentage change



Summary of monthly movement

The CPI increased by 1.5% in April 2026. The most significant price rises this month were:

Recreation, Sport and Culture (+6.3%).

Housing, Water, Electricity, Gas and Other Fuels (+4.9%): led by Electricity (+6.2%) and Rent (+5.5%).

Transport (+4.4%): driven by Passenger transport services (+7.6%) and Fuel (+6.8%).

Personal Care, Social Protection and Miscellaneous (+3.4%).

Offsetting declines:

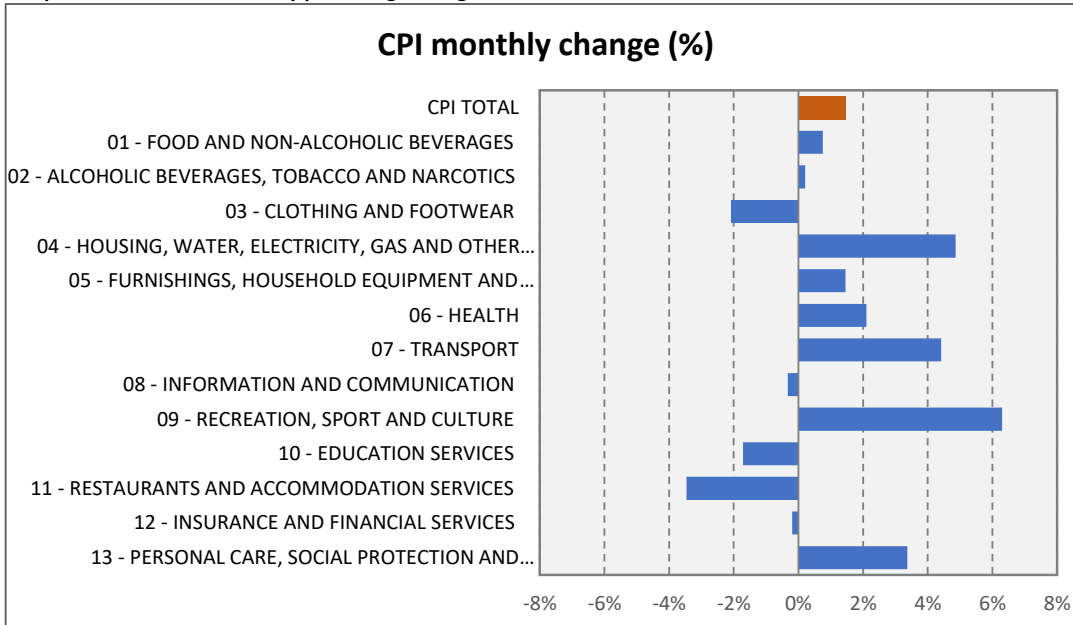
Restaurants and Accommodation Services (-3.5%).

Clothing and Footwear (-2.1%).

Education Services (-1.7%).

Division	% -change monthly		
	Feb-26	Mar-26	Apr-26
CPI TOTAL	0.1%	2.4%	1.5%
01 - FOOD AND NON-ALCOHOLIC BEVERAGES	-0.1%	0.6%	0.8%
02 - ALCOHOLIC BEVERAGES, TOBACCO AND NARCOTICS	0.6%	2.3%	0.2%
03 - CLOTHING AND FOOTWEAR	1.5%	2.9%	-2.1%
04 - HOUSING, WATER, ELECTRICITY, GAS AND OTHER FUELS	-1.1%	5.5%	4.9%
05 - FURNISHINGS, HOUSEHOLD EQUIPMENT AND ROUTINE HOUSE...	4.9%	0.4%	1.5%
06 - HEALTH	0.8%	3.1%	2.1%
07 - TRANSPORT	-1.5%	7.6%	4.4%
08 - INFORMATION AND COMMUNICATION	-3.7%	1.5%	-0.3%
09 - RECREATION, SPORT AND CULTURE	0.6%	2.2%	6.3%
10 - EDUCATION SERVICES	1.2%	2.0%	-1.7%
11 - RESTAURANTS AND ACCOMMODATION SERVICES	3.4%	2.6%	-3.5%
12 - INSURANCE AND FINANCIAL SERVICES	0.1%	1.3%	-0.2%
13 - PERSONAL CARE, SOCIAL PROTECTION AND MISCELLANEOUS...	1.2%	2.0%	3.4%

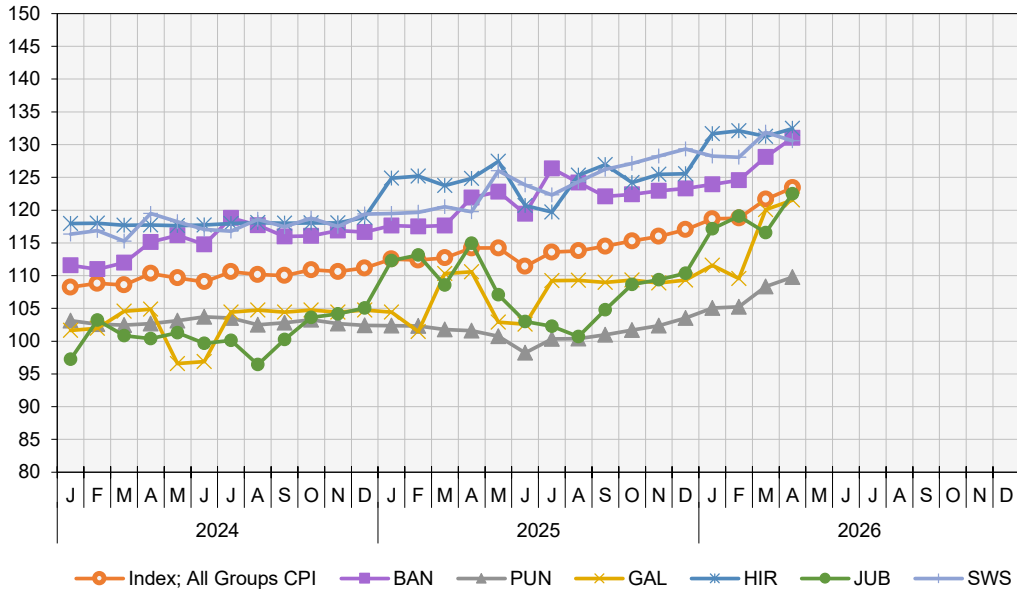
Graph 4. Division level monthly percentage change



SOMALIA CPI REPORT - STATES COMPARISON

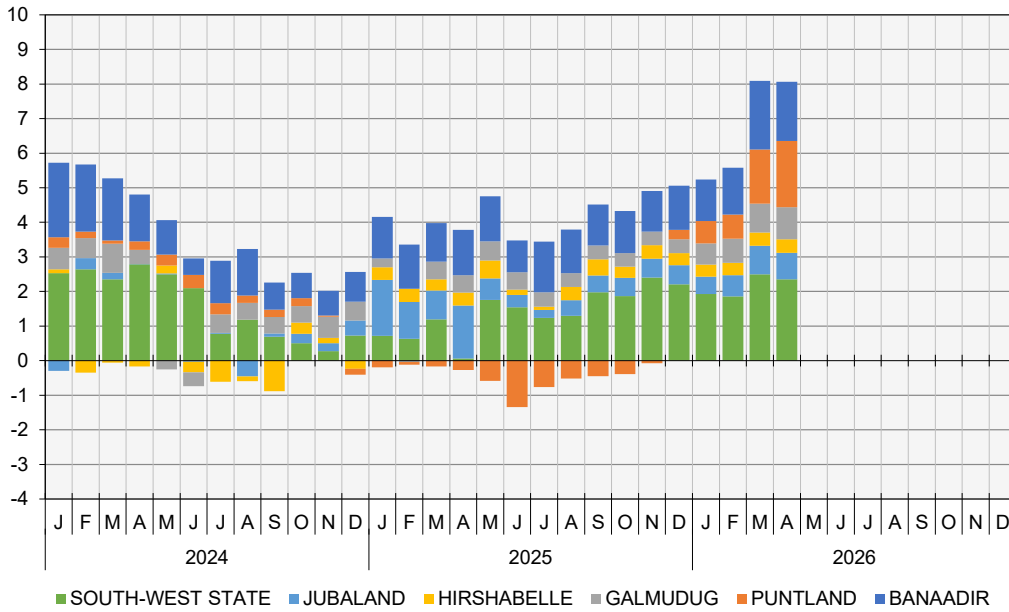
Graph 5. CPI Indices per State (a)

Index Reference Period = 2022



(a) Puntland indices have been estimated

Graph 6. Points contribution (%) to inflation rate (contribution by state) (a)



(a) Puntland indices have been estimated

Summary of annual movement

Over the twelve months to April 2026, positive state movements came from:

Galmudug (+9.9%): Personal care, Social protection and Miscellaneous goods and services (+12.4%), Food and Non-Alcoholic Beverages (+11.16%) . Insurance and Financial Services (+11.0).

South-West State (+9.1%): Food and Non-Alcoholic Beverages (+4.3%) – cereals, bread & bakery, meat.

Puntland (+8.1%): Restaurants and Accommodation Services (+12.2%) – restaurant services. Housing (+12.1%) – electricity, rent. Transport (+6.0%) – passenger services, fuel.

Banadir (+7.5%): Education Services (+30.4%). Restaurant and Accommodation services (+23.5). Housing (+18.1%).

Jubaland (+6.6%): Restaurant and accommodation services (+39.0%). Health (+27.1%). Information and Communication (+13.3%).

Hirshabelle (+6.1%): Transport (+67.6%) – passenger services, fuel. Personal care, Social protection and Miscellaneous goods and services (+63.1%).

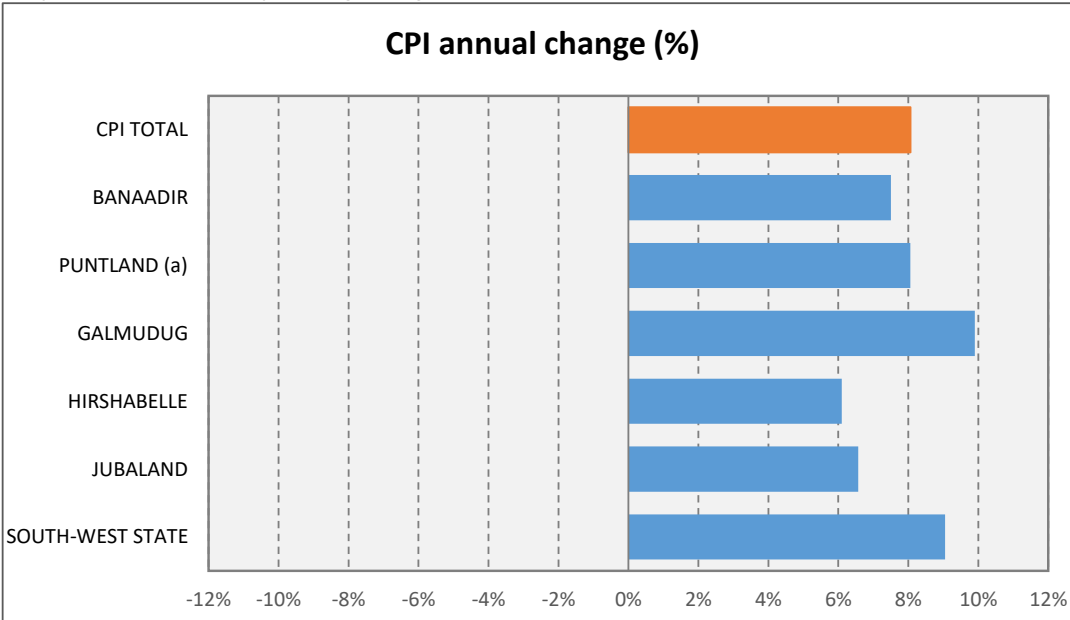
There were no negative movements during April 2026.

Table 4. State level annual percentage change

State	% -change annual		
	Feb-26	Mar-26	Apr-26
CPI TOTAL	5.7%	7.9%	8.1%
BANAADIR	6.0%	8.9%	7.5%
PUNTLAND (a)	2.9%	6.5%	8.1%
GALMUDUG	8.0%	8.8%	9.9%
HIRSHABELLE	5.5%	6.1%	6.1%
JUBALAND	5.2%	7.4%	6.6%
SOUTH-WEST STATE	7.0%	9.4%	9.1%

(a) Puntland indices have been estimated

Graph 7. State level annual percentage change



(a) Puntland indices have been estimated

Summary of monthly movement

During the month of April 2026, positive movements came from:

Jubaland (+5.1%): Recreation, Sport and Culture (+22.3%). Alcoholic Beverages (+11.2%)

Banadir (+2.3%): Recreation, sport and Culture(+8.0%). Health (+7.1%). Personal care, Social protection and Miscellaneous goods and services (+6.6%).

Puntland (+1.3%): Housing (+5.8%) – electricity, rent. Transport (+7.6%) – passenger services, fuel.

Galmudug (+1.2%): Personal care, Social protection and Miscellaneous goods and services (+3.3%).

Transport (+2.7%). Health (+1.9%)

Hirshabelle (+0.9%): Housing (+11.9%) – electricity, rent. Recreation, Sport and Culture (+10.2%).

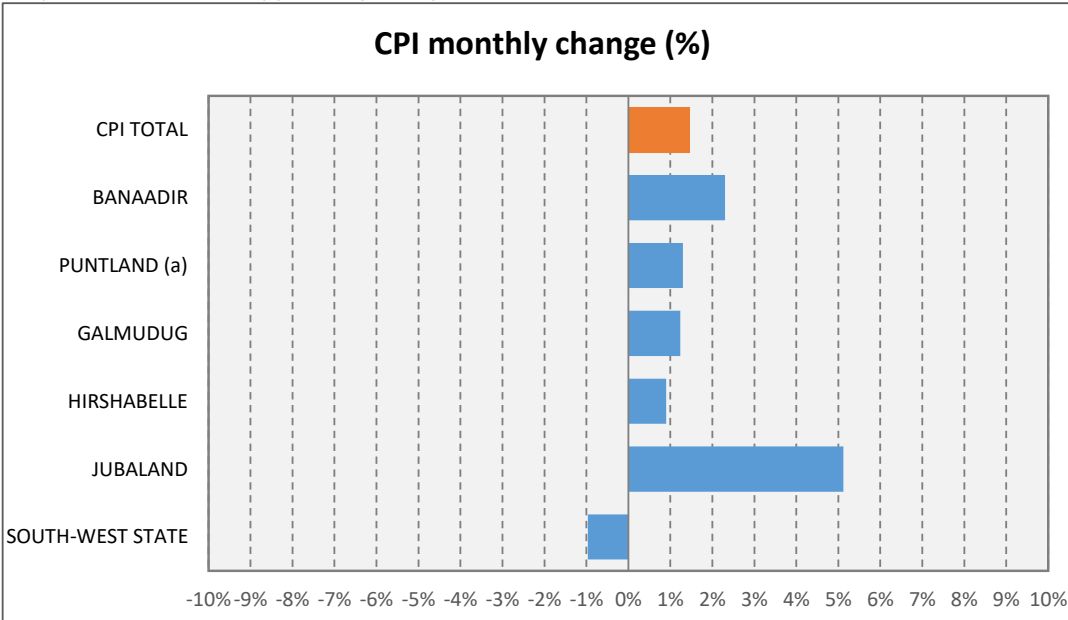
South-West State (-1.0%):Overall decline, but positive contributions from: Housing (+6.3%) – electricity, rent. Transport (+6.1%) – passenger services rebound.

Table 5. State level monthly percentage change

State	% -change monthly		
	Feb-26	Mar-26	Apr-26
CPI TOTAL	0.1%	2.4%	1.5%
BANAADIR	0.5%	2.8%	2.3%
PUNTLAND (a)	0.2%	2.9%	1.3%
GALMUDUG	-1.8%	9.6%	1.2%
HIRSHABELLE	0.4%	-0.6%	0.9%
JUBALAND	1.6%	-2.1%	5.1%
SOUTH-WEST STATE	-0.1%	3.0%	-1.0%

(a) Puntland indices have been estimated

Graph 8. State level monthly percentage change



(a) Puntland indices have been estimated