



**SOMALI NATIONAL
BUREAU OF STATISTICS**
Federal Republic of Somalia

CONSUMER PRICE INDEX

SOMALIA



MAY 2026

Consumer Price Index, Somalia

Foreword

The Consumer Price Index (CPI) is a key economic indicator that measures the weighted aggregate change in retail prices of goods and services purchased by households in Somalia. It serves as the primary gauge of inflation, enabling policymakers, businesses, and researchers to assess price trends and make informed economic decisions.

Since January 2025, Somalia CPI is released considering new weights derived from 2022 Somalia Integrated Households' Budget Survey (SIHBS), adopting the new households' consumption classification (COICOP 2018), and representing all the Federal Members States. A Methodological Note will be made available on the SNBS web site.

The CPI is defined as:

"A measure of the weighted average change in retail prices paid by consumers for a fixed basket of goods and services over time." Key uses of CPI include:

- Inflation Measurement: The year-on-year (YoY) inflation rate compares current price levels to the same period in the previous year, serving as a tool for monetary and fiscal policy.
- Economic Decision-Making: Used by government agencies, businesses, and international organizations to adjust wages, contracts, and social benefits.
- Macroeconomic Analysis: Supports the evaluation of purchasing power, cost-of-living adjustments, and economic stability.

Price Collection Process:

- Frequency: Conducted during the first and third weeks of each month.
- Geographic Coverage: Mogadishu (Capital City), All Federal Member States (FMS).
- Commodity Coverage: 537 items, identified through the 2022 SIHBS, and classified by the Classification of Individual Consumption by Purpose (COICOP) 2018 across 13 divisions.

Key statistics

Annual (May 2026)

Over the twelve months to May 2026, the CPI rose 8.4%. The most significant price rises over the twelve months were:

- Restaurants and Accommodation Services (+23.4%): Restaurant Services (+28.7%).
- Recreation, Sport and Culture (+12.5%): driven by Recreation Services (+8.5%).
- Education Services (+15.9%): Early childhood and primary education (+14.9%).
- Health (+13.2%): Inpatient Care Services (+19.2%), Medicine and Health Services (+11.8%).
- Housing, Water, Electricity, Gas and Other Fuels (+10.0%).
- Food and Non-Alcoholic Beverages (+8.0%).
- Clothing and Footwear (+7.9%).

There were no negative movements during May 2026. State-level increases (highest to lowest):

- Galmudug (+17.7%), Puntland (+9.3%), Banadir (+7.7%), Jubaland (+7.7%), Hirshabelle (+6.3%), South-West State (+6.1%)

Monthly (May 2026)

The CPI increased by 0.3% in May 2026. The most significant price rises this month were:

- Clothing and Footwear: Clothing (+2.4%), Footwear(+5.1%)
- Restaurants and Accommodation Services (+1.6%): Accommodation Services (+1.8%), Restaurant Services (+1.5%).
- Insurance and Financial Services (+1.3%).

Offsetting declines: Housing, Water, Electricity, Gas and Other Fuels (-2.1%), Transport (-1.8%).

State-level increases (highest to lowest):

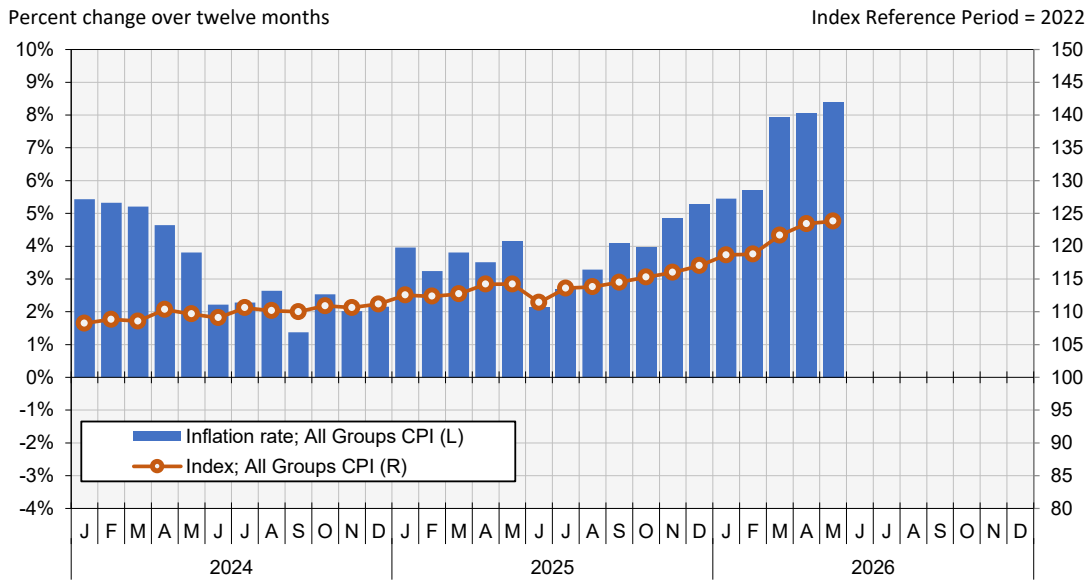
- Hirshabelle (+2.3%), South-West State (+2.3%), Banadir (+0.9%), Puntland (+0.3%),
- Galmudug (-0.3% – overall decline, but positive contributions from Alcoholic beverages (+3.5%).
- Jubaland (-5.8%) – overall decline, but positive contributions from: Clothing and Footwear (+8.0%).

Table 1. CPI, Somalia monthly and annual movements (%)

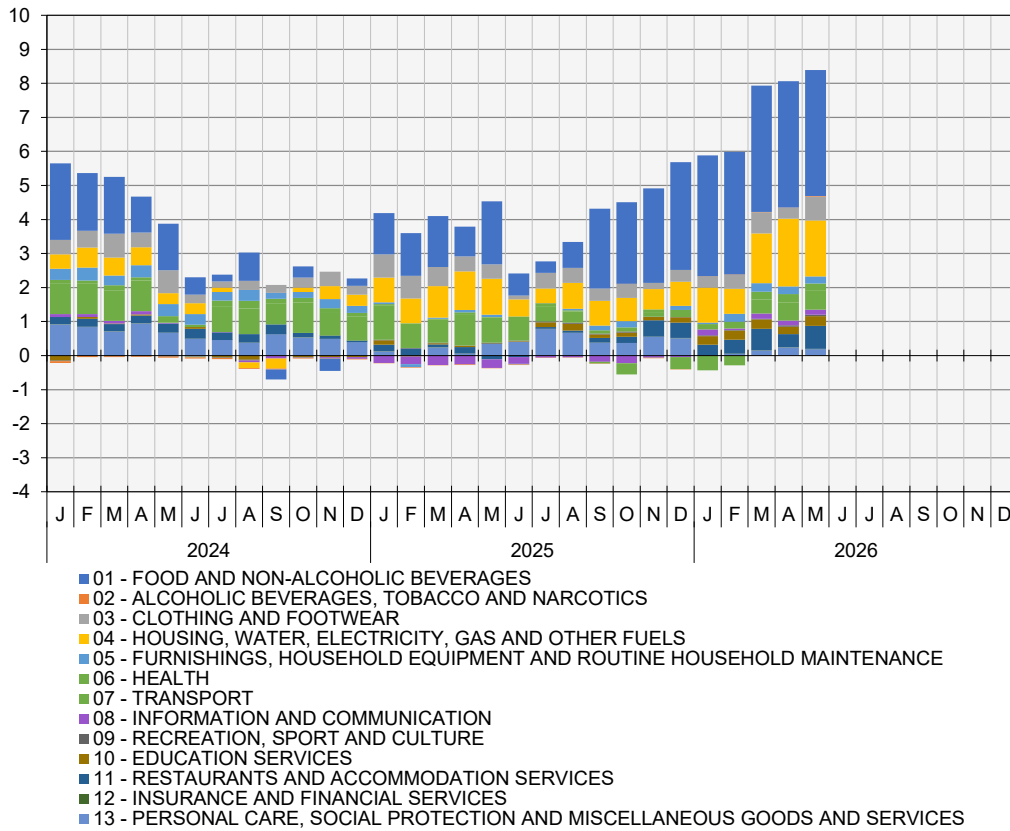
	Monthly change (%)	Annual change (%)
May-26	0.3%	8.4%
Apr-26	1.5%	8.1%
Mar-26	2.4%	7.9%

SOMALIA CPI REPORT - ALL DIVISIONS CPI

Graph 1. Inflation rate according to CPI



Graph 2. Points contribution (%) to inflation rate (contribution by division)



Summary of annual movement

Over the twelve months to May 2026, the CPI rose 8.4%.

The most significant price rises over the twelve months were:

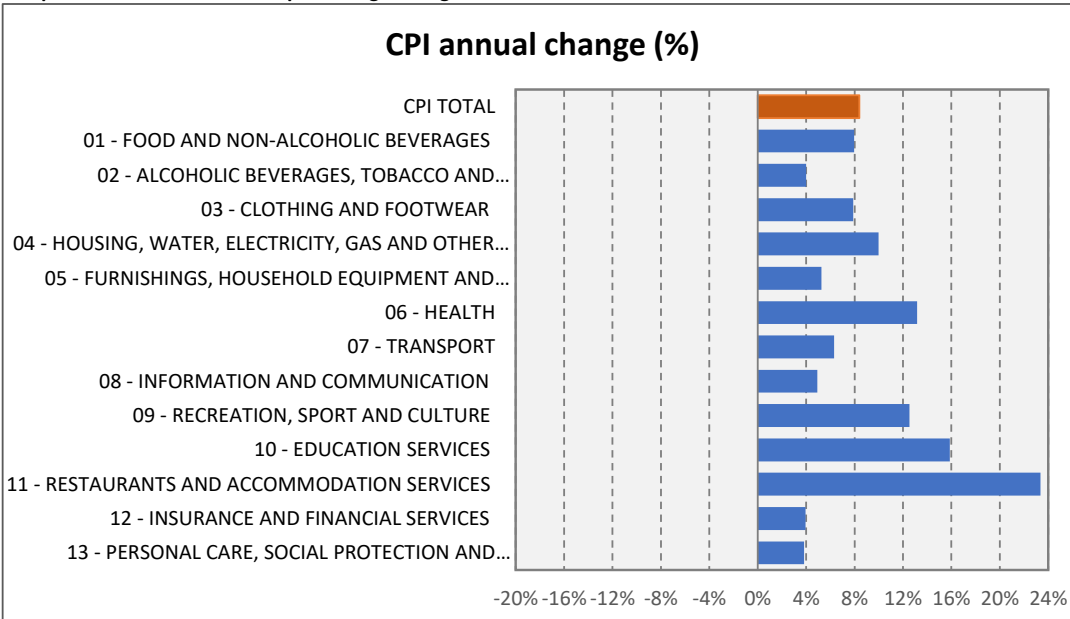
- Restaurants and Accommodation Services (+23.4%): driven by Restaurant Services (+28.7%).
- Recreation, Sport and Culture (+12.5%): driven by Recreation Services (+8.5%).
- Education Services (+15.9%): led by Early childhood and primary education (+14.9%).
- Health (+13.2%): with Inpatient Care Services (+19.2%) and Medicine and Health Services (+11.8%) as the main drivers.
- Housing, Water, Electricity, Gas and Other Fuels (+10.0%): driven by water (+20.7%).
- Food and Non-Alcoholic Beverages (+8.0%): led by Non-Alcoholic beverages (+9.4%).

There were no negative movements during May 2026. ²

Table 2. Division level annual percentage change

Division	% -change annual		
	Mar-26	Apr-26	May-26
CPI TOTAL	7.9%	8.1%	8.4%
01 - FOOD AND NON-ALCOHOLIC BEVERAGES	8.0%	8.1%	8.0%
02 - ALCOHOLIC BEVERAGES, TOBACCO AND NARCOTICS	2.3%	2.2%	4.0%
03 - CLOTHING AND FOOTWEAR	6.9%	3.5%	7.9%
04 - HOUSING, WATER, ELECTRICITY, GAS AND OTHER FUELS	8.9%	12.1%	10.0%
05 - FURNISHINGS, HOUSEHOLD EQUIPMENT AND ROUTINE HOUSEHOLD MAI	6.3%	5.8%	5.3%
06 - HEALTH	13.7%	14.5%	13.2%
07 - TRANSPORT	4.7%	6.0%	6.3%
08 - INFORMATION AND COMMUNICATION	5.1%	4.4%	4.9%
09 - RECREATION, SPORT AND CULTURE	6.5%	12.7%	12.5%
10 - EDUCATION SERVICES	14.9%	12.2%	15.9%
11 - RESTAURANTS AND ACCOMMODATION SERVICES	20.9%	12.2%	23.4%
12 - INSURANCE AND FINANCIAL SERVICES	3.1%	2.9%	3.9%
13 - PERSONAL CARE, SOCIAL PROTECTION AND MISCELLANEOUS GOODS ANI	2.9%	4.8%	3.8%

Graph 3. Division level annual percentage change



Summary of monthly movement

The CPI increased by 0.3% in May 2026.

The most significant price rises this month were:

- Clothing and Footwear (+2.9%) led by footwear (+5.4%) and Fuel (+6.8%).
- Restaurants and Accommodation Services (+1.6%): Accommodation Services (+1.8%), Restaurant Services (+1.5%).
- Insurance and Financial services (+1.3%): led by financial services (+1.3%).

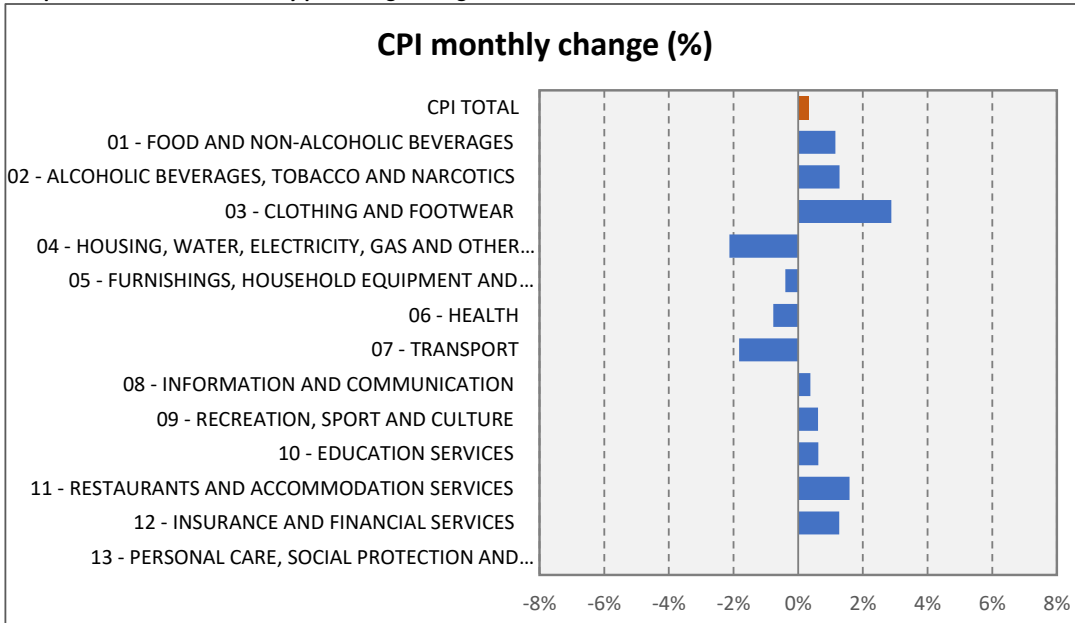
Offsetting declines:

- Housing, Water, Electricity, Gas and Other Fuels (-2.1%).
- Transport(-1.8%).

Table 3. Division level monthly percentage change

Division	% -change monthly		
	Mar-26	Apr-26	May-26
CPI TOTAL	2.4%	1.5%	0.3%
01 - FOOD AND NON-ALCOHOLIC BEVERAGES	0.6%	0.8%	1.2%
02 - ALCOHOLIC BEVERAGES, TOBACCO AND NARCOTICS	2.3%	0.2%	1.3%
03 - CLOTHING AND FOOTWEAR	2.9%	-2.1%	2.9%
04 - HOUSING, WATER, ELECTRICITY, GAS AND OTHER FUELS	5.5%	4.9%	-2.1%
05 - FURNISHINGS, HOUSEHOLD EQUIPMENT AND ROUTINE HOUSE...	0.4%	1.5%	-0.4%
06 - HEALTH	3.1%	2.1%	-0.8%
07 - TRANSPORT	7.6%	4.4%	-1.8%
08 - INFORMATION AND COMMUNICATION	1.5%	-0.3%	0.4%
09 - RECREATION, SPORT AND CULTURE	2.2%	6.3%	0.6%
10 - EDUCATION SERVICES	2.0%	-1.7%	0.6%
11 - RESTAURANTS AND ACCOMMODATION SERVICES	2.6%	-3.5%	1.6%
12 - INSURANCE AND FINANCIAL SERVICES	1.3%	-0.2%	1.3%
13 - PERSONAL CARE, SOCIAL PROTECTION AND MISCELLANEOUS...	2.0%	3.4%	0.0%

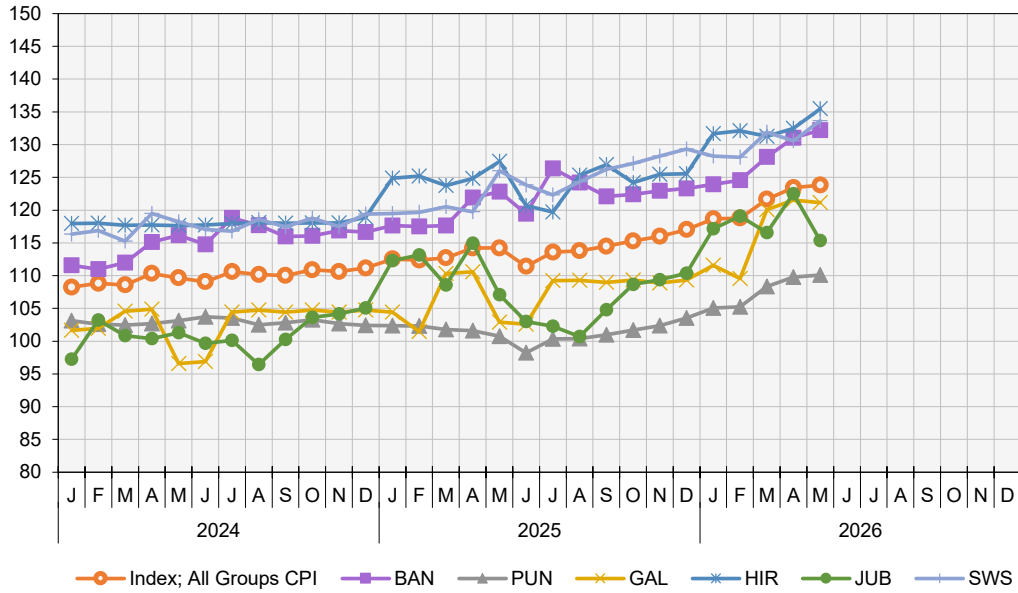
Graph 4. Division level monthly percentage change



SOMALIA CPI REPORT - STATES COMPARISON

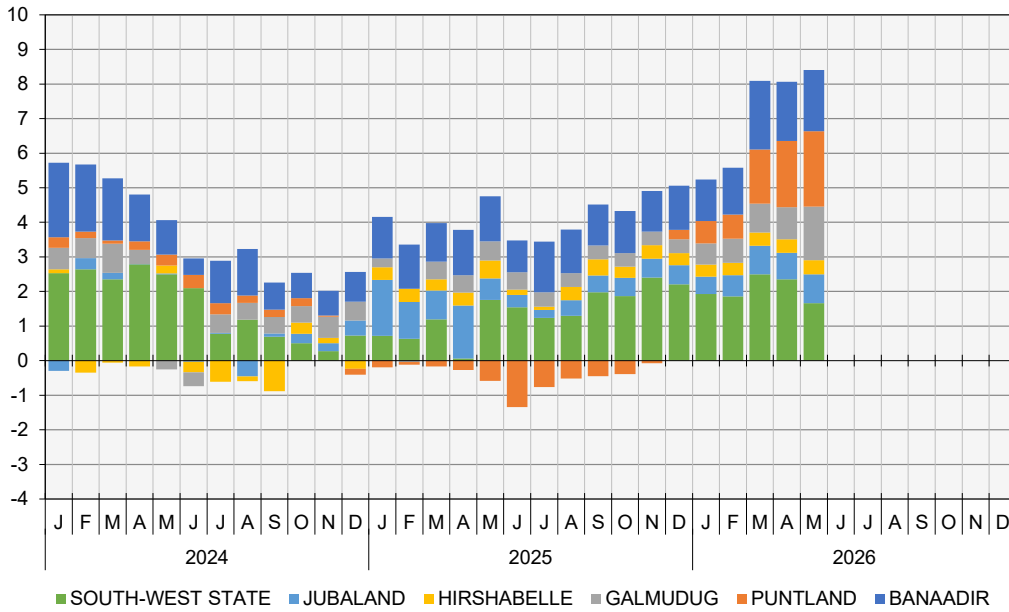
Graph 5. CPI Indices per State (a)

Index Reference Period = 2022



(a) Puntland indices have been estimated

Graph 6. Points contribution (%) to inflation rate (contribution by state) (a)



(a) Puntland indices have been estimated

Summary of annual movement

Over the twelve months to May 2026, positive state movements came from:

- Galmudug (+17.7 %) Food and Non-Alcoholic Beverages (+23.3%) . Clothing and Footwear (+17.7%). Education Services (+14.0%).
- Puntland (+9.3%)Restaurants and Accommodation Services (+20.9%). Health (+18.7%). Housing (+8.9%) . Transport (+4.7%).
- Banadir (+7.7%) Education Services (+26.3%). Housing (+17.5%). Restaurand and accommodation Services (15.1%)
- Jubaland (+7.7%) clothing and footwear (+19.3%) Recreation, sport and culture (+18.6%). Information and Communication (+15%).
- Hirshabelle (+6.3%) Transport (+70.7). Recreation, Sport and Culture (+40.4%)
- South-West State (+6.1%) Restaurant and Accommodation Services (+43.5%). Health (+12.6%)

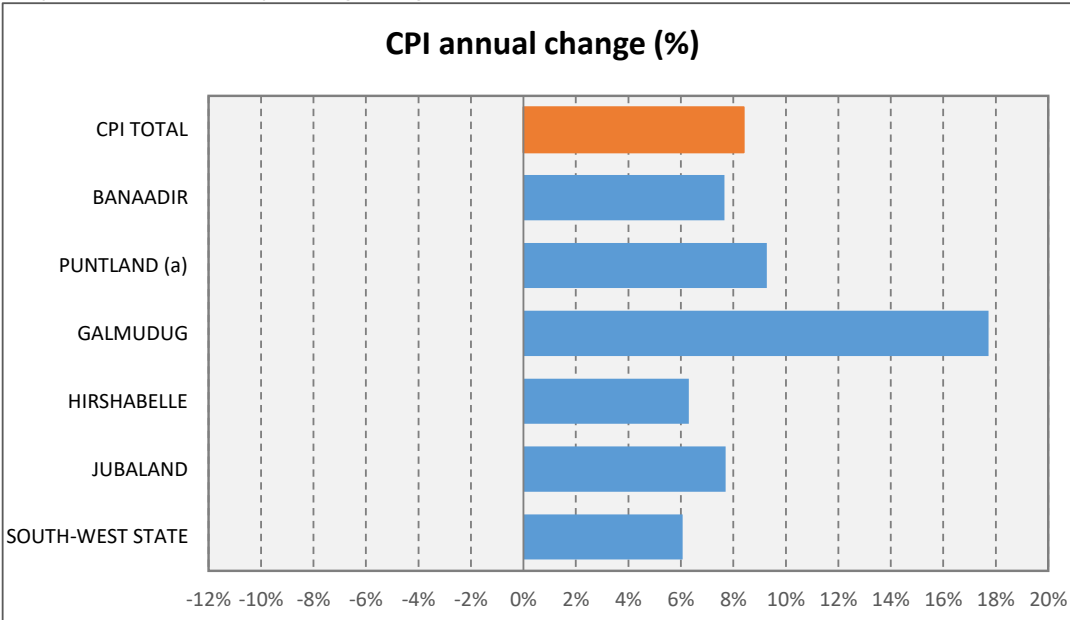
During the month of May 2026, there were no negative movements.

Table 4. State level annual percentage change

State	% -change annual		
	Mar-26	Apr-26	May-26
CPI TOTAL	7.9%	8.1%	8.4%
BANAADIR	8.9%	7.5%	7.7%
PUNTLAND (a)	6.5%	8.1%	9.3%
GALMUDUG	8.8%	9.9%	17.7%
HIRSHABELLE	6.1%	6.1%	6.3%
JUBALAND	7.4%	6.6%	7.7%
SOUTH-WEST STATE	9.4%	9.1%	6.1%

(a) Puntland indices have been estimated

Graph 7. State level annual percentage change



(a) Puntland indices have been estimated

Summary of monthly movement

During the month of May 2026, positive movements came from:

- Hirshabelle (+2.3%) Health (+8.6%).Recreation, Sports and Culture (+4.2%).
- South-West State (+2.3%) Restaurant and Accommodation (+16.1%). Food (+4.6%).
- Banadir (+0.9%) Alcoholic beverages (+5.1%) . Food and non-alcoholic beverages (+4.0%).
- Puntland (+0.3%) Housing (+5.8%). Transport (+7.6%).

An overall decline was experienced in:

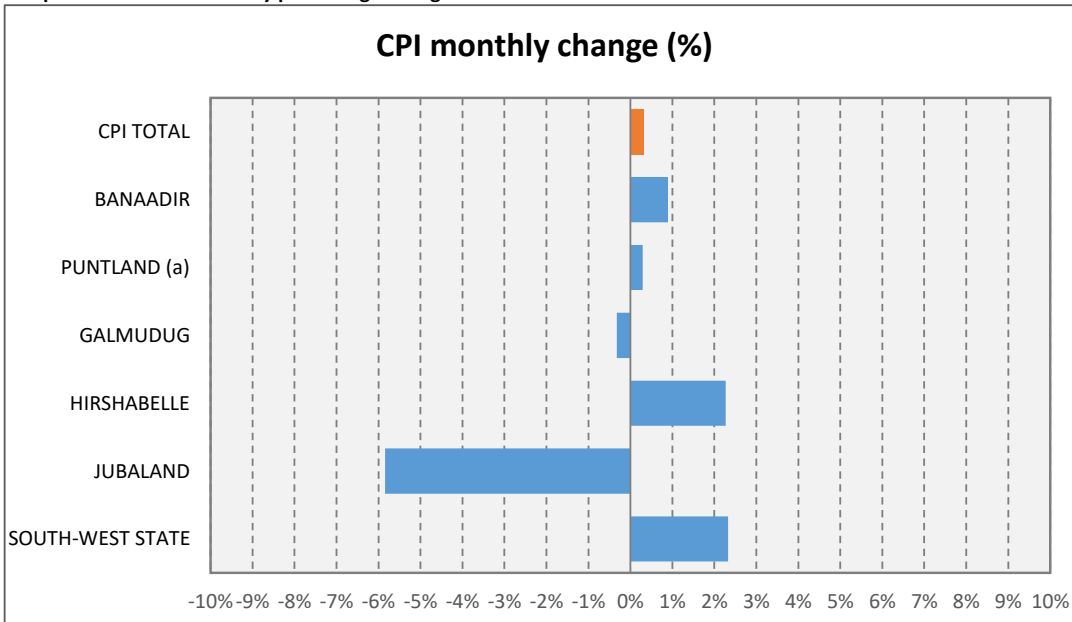
- Jubaland (-5.8%) Overall decline, but positive contributions from: Clothing and Footwear (+8.0%)
- Galmudug (-0.3%): Overall decline, but positive contributions from: Alcoholic beverages (+3.5%).

Table 5. State level monthly percentage change

State	% -change monthly		
	Mar-26	Apr-26	May-26
CPI TOTAL	2.4%	1.5%	0.3%
BANAADIR	2.8%	2.3%	0.9%
PUNTLAND (a)	2.9%	1.3%	0.3%
GALMUDUG	9.6%	1.2%	-0.3%
HIRSHABELLE	-0.6%	0.9%	2.3%
JUBALAND	-2.1%	5.1%	-5.8%
SOUTH-WEST STATE	3.0%	-1.0%	2.3%

(a) Puntland indices have been estimated

Graph 8. State level monthly percentage change



(a) Puntland indices have been estimated